

# RIVER NAVIGATION IN THE CUCUTENI – TRIPOL’E CULTURE ?\*

BY

OLAF HÖCKMANN

Most aspects of the Cucuteni–Tripol’*e* culture have been thoroughly investigated through many decades. As far as my knowledge goes there never has been tried to analyse, however, if that sophisticated Eneolithic civilisation used water-ways for communication and exchange (“trade”). Some writers have taken it for granted<sup>1</sup>. I think the question calls for being scrutinised in its own right, at the risk of proving that a wheel is round indeed.

Rumanian readers will forgive me thinking that Western Europeans might profit from a summary profile of that civilisation, for better understanding the scope of that quest.

The Eneolithic Cucuteni–Tripol’*e* culture in the states of Romania, Moldavia, and Ukraine has in the 4<sup>th</sup> – 3<sup>rd</sup> millennia BC so to speak formed one frontier of the world of food-producing economy, in the area NW of the Black Sea. It left a vast number of sites<sup>2</sup>. Among them some Late Eastern Tripol’*e* sites in Ukraine stand out for their exceptional size that is combined with an arrangement of the hundreds of houses in concentric circles or ovals (Catalogue A)<sup>3</sup>. Many houses are of considerable size, some having been two unless three floors high<sup>4</sup>. At the same time, in small settlements there prevailed small primitively built huts.

The regular lay-out of the large settlements suggests the existence of some authority whatsoever it may have been. Beyond their mere size, their apparent central governance has caused calling these “Giant settlements” – “Proto-towns”<sup>5</sup>. In the number of their inhabitants, estimates coming up to ca. 14.000<sup>6</sup>, they matched early towns of Mesopotamia, but we are ignorant of any social stratification as characterises urban society, including a level of “intellectuals” (priests ?) who eventually kept some kind of historical records, among the populace of the Tripol’*e* “giant settlements”. There is as yet no unambiguous evidence either of paramount rulers or impressive residences of a sophisticated architecture, of magnificent public sanctuaries, or of administrations that based their activities on one or another kind of writing, as in Mesopotamia or Egypt.

---

\* Russian/Ukrainian names are transcribed directly. The pronunciation of “Tripol’*e*” so, is identical with such western writings as *Tripolye* or *Tripolje* but for the fact that the softening of the *-l-* is there neglected. *Dnestr* is preferred to *Nistru* since non-Rumanian readers might not be familiar with the Rumanian name. Since *-h-* is regularly aspirated in Rumanian, Russian, and Ukrainian, transcriptions like *-kh-* or *-ch-* are omitted.

<sup>1</sup> E.g. Passek 1961, 189.

<sup>2</sup> As to their total number, estimates coming up to 5000: Mantu 1998, 50 f.

<sup>3</sup> Šmaglij 1959, 52; Dergačev 1991, 23; 27; Sorokin 1993, 83 ff; Mantu 1998, 51; Šmaglij – Videjko 2001–2, 127 f. The earliest site, Bernaševka (Cat. B 6), dates to Tripol’*e* A (Zbenovič 1996, 35). The circular arrangement of its seven houses suggests a special meaning of such layouts from the start on.

<sup>4</sup> Three floors: Vin’kovskij 1990, 76 fig. 1 (Aleksandrova, Complex I); Šumova 1990. Two-floor houses were distributed rather widely (Markevič 1981, 36 + fig. 46,1–3.– Interpretation as “potters’ workshops”: Ellis 1984, 115 ff.).

<sup>5</sup> Šmaglij 1980; Černjakov 1990; Masson 1990; Sajko 1990; Šmaglij – Videjko 1990a; Idd. 1993, 60; Kruc 1990; Černjakov 1993; Šmaglij – Videjko 2001–2, 131. Caution in dealing with the term is advised by Monah 1992, 392 f.– Petrescu-Dîmbovița 1992, 60.

<sup>6</sup> Šmaglij – Videjko 1993, 60; Mantu 1998, 53.

What is known is that the centres of the circular or oval rings of houses were occupied by one or two buildings of the regular timber-and-clay construction, and regular sizes that are separated from the outer rings by an open space.

One “proto-urban” feature are specialised crafts. Potters are most conspicuous<sup>7</sup>, but there also can be considered some specialisation in the production of stone tools<sup>8</sup>. Proposing that there also existed professional traders would anticipate the outcome of this study. There are reasons for considering the site of Drăgușeni (note 30) to have been a somewhat specialised potters’ village<sup>9</sup>. If so, its siting on a former island in the small river Podriga, navigable for boats, would emphasise that such a place would have depended on convenient means of river transportation for a regular supply of the kilns with firewood and the potters with victuals, and for distributing the potters’ products.

It is self-explaining that the same holds true to a conspicuous degree for the “giant settlements”. Then as now, the most efficient means for transportation are boats or nowadays, huge ships. This is my reason for presenting some data that favour considering river navigation to have played an active part in the Cucuteni – Tripol’ e culture, at the risk of establishing that a wheel indeed is round.

The situation causes me to prefer the term “giant settlements” to “proto-towns” for extraordinarily large sites of the late Eastern Tripol’ e culture. In any case the term demands a background of smaller places as form the vast majority of Cucuteni/Tripol’ e sites. Most of them indeed are that small that their size alone permits distinguishing “giants” of 250 (Dobrovody) – 450 ha (Tal’janki)<sup>10</sup> from “average” ones of 20–50 ha, and hamlets of a few houses. The span favours interpreting the “giants” as regional centres<sup>11</sup>.

A circular arrangement of few houses around an open space, then without a central building, is first attested at the Tripol’ e A settlement of Bernaševka (n. 2; Cat. B 6). Being singular at its time as far as my knowledge goes, it can be understood to have been special, forming one ancestor of the late group of giant settlements<sup>12</sup>.

Summing up, some Late Tripol’ e communities had attained a level of social development that preceded urban civilisation. That last step was, however, not taken since a change of climate<sup>13</sup> reduced the agrarian potential of the Tripol’ e farmers, and non-agrarian tribes encroached upon the farmers, already hard-pressed by the change of climate. When Late Tripol’ e population numbers peaked, there will have become urgent a problem arisen from the growing number of inhabitants of the settlements, in particular of the “giants” on the one hand, and the fact that the most fertile fields freshly gained by cutting down virgin forest, were then not any more found near the settlements but at some distance, on the other<sup>14</sup>. There likely can be thought that fodder for keeping alive a reduced number of cattle through the winter, also was not found in the vicinity of the settlements any more. But this is but one reason for considering transportation to have played an essential rôle in the Cucuteni–Tripol’ e economy.

\*

The foremost object of transportation will have been timber for house construction, and firewood both for domestic use, and the potters. In Late Tripol’ e it likely was found only at some distance from the settlements, due to the consequences of slash-and-burn agriculture (see above). Suitable clay both for house construction and the potters, also might now and then have been found only at a distance. This adds to the tasks of supplying the settlements with grain and fodder.

Can there be thought that the people were able to reach their fields, the forest, and clay quarries which often will have been distant from their homes<sup>15</sup>, regularly enough by foot for taking home these supplies,

<sup>7</sup> Ellis 1984, 5; 115 ff; Ellis 1996, 78 ff. 82; Tsvet 1996, 103; Mantu 1998, 56; Šmaglij – Videjko 2001-2, 260.

<sup>8</sup> Tsvet 1996, 103.

<sup>9</sup> Cârciumar 1984, 42; Muraru 2000, 19.

<sup>10</sup> Černjakov 1990, 3.

<sup>11</sup> Černjakov 1990, 3; Masson 1990, 9; Zbenovič 1990, 10 f.; Mantu 1998, 53.

<sup>12</sup> At the time of Tripol’ e B, Ščerbanivka (Cat. C 117) stands out for its size and its lay-out that combines a circular arrangement of houses around an open space with a central building, with three rows of parallel houses.

<sup>13</sup> Dumitrescu et al. 1983, 142 f.– Mantu 1998, 31.

<sup>14</sup> Ellis 1984, 207.

<sup>15</sup> Fedorova 1962.

timber being most bulky, in batches they could carry on their backs ? It would matter if the grain was threshed near the fields or at the homeplace. In the latter case, the straw would have formed additional bulk that hampered transportation. S.N. Bibikov calculates that an adult annually needed ca. 196 kg (12  *pud*) of grain a year for his or her subsistence<sup>16</sup>. It means that in a “giant settlement” of 10.000 inhabitants there were annually consumed ca. 1.960.000 kg (1.960 t) of grain, for not mentioning other essentials.

\*

There has been considered transportation by ox-drawn carts as are known by Eneolithic models from SE Europe, and finds of more or less contemporaneous Neolithic wooden disc wheels in the bogs of NW Germany and the E Netherlands. Never, however, have there been found remains or models of draft animals together with cart models, or wheels. Clay statuettes of pairs of yoked oxen from the Cucuteni/Tripol’e area<sup>17</sup> might in principle go back to such cart models as well as a remarkable cast-copper pair of oxen from the Funnel-Beaker culture in Poland, the northern neighbour of the Tripol’e area. There can be thought that the Funnel Beaker folks’ using draft animals had been inspired from there<sup>18</sup>. On the other hand, B. Gheție and C.N. Mateescu pointed out deformations on the bones of the leg joints of cattle found at the Middle Neolithic site of Vădastra in Romania that were caused by hard work<sup>19</sup>. He thought this hard work had been pulling primitive ploughs. For this reason there should be shunned from accepting all models of yoked oxen for testimony of ox-drawn carts in the Cucuteni-Tripol’e culture.

\*

Be this as it may, if cart transportation had under special conditions existed locally, it certainly would not exclude that Cucuteni/Tripol’e people also profited from the most convenient and efficient way of transportation at all times, namely by *boat* or *raft*. It would imply that a significant percentage of all settlements should have been sited on water-ways navigable for early boats. Catalogues A-G demonstrate that the condition is met in hundreds of cases. We shall come back to it.

\*

Several types of boats are by original finds or models known from the Neolithic, and Copper Age of Europe<sup>20</sup>. Stout *dugouts* carved from the trunk of a tree vie with lightly-built *bark boats* or hide-covered *coracles*. The latter types would particularly well have been suited for small and shallow rivers serving for close-range transportation. Individual conditions, however, make think that such goods as salt, being a vital demand for early farmers for preserving meat for the winter, flint, and obsidian<sup>21</sup> are candidates for long-range trade by efficient ways of transportation. Ellis pointed out that black pigment for painting pottery was another commodity in permanent demand that was distributed over long distances<sup>22</sup>. Even if the goods were passed “down the line” from one tribe to the next, transportation was crucial.

<sup>16</sup> Bibikov 1965, 53.

<sup>17</sup> Bondár 2004.– Pare 2006, 52 ff. (I thank the author for drawing my attention to this work); Krasnov (1971, 37) takes carts for the only means of transportation in the Cucuteni-Tripol’e culture, but clay statuettes of pairs of yoked oxen from Krženica-jar and Florești (Markevič 1981, 142 fig. 94,4.6) can stem from from models of carts as well as of ploughs. Rock engravings from Kam’jana Mogila in Ukraine (Rudins’kij 1961, 79 fig. 53; pl. XXVI) seem to show a pair of oxen pulling a one-axled cart.

<sup>18</sup> Two separate copper oxen with horizontal holes passing through their bodies, from Bytyn in W Poland: (e.g.) Godłowska 1979, 237 sq fig. 136,1; 137,1 (T. Wislanski).

<sup>19</sup> Gheție, Mateescu 1970–71 *passim*.

<sup>20</sup> Höckmann 1996; Monah 2005. His models date from the Early Cucuteni-Tripol’e culture.

<sup>21</sup> Crișmaru 1977, 22 (flint from the Prut area at Dragușeni); Muraru 1984 (1987); Dergačev 1991, 21.27.29 (Volynian flint on Dnestr and Middle Dnepr); 42 (Dobrogean flint at Danku); Boghian 1996, 279.334 (several sources of flint); Cucoș 1999, 55 f. 59 f. (Prut); Marinescu-Bîlcu 2000, 43 (Prut); Muraru 2000, 60 (Prut); Tsvek 1996 a, 93 f.; Tsvek 1996 b, 124 (Carpathian obsidian); Skakun 1996, 149 (flint from Dobrogea). As to barter trade: Ellis 1984, 205; Monah 1991, 396 f. Tsvek 1996 a, 93 f.; Mantu 1998, 55.57.

<sup>22</sup> Ellis 1984, 84 ff.; Ellis 1996, 82 f. 84.

Also copper as forms the bulk of the rich early Karbuna hoard<sup>23</sup>, had been carried over long distances if the notion is correct that it originated in the Gumelnița–Karanovo VI area far south. As opposed to this, Cucuș proposes that copper ores in Rumanian Moldavia or in SE Transylvania might have been exploited as early as in the Eneolithic<sup>24</sup>. Tsvek considers that the distribution of copper went back to active exportation by the miners, rather than to having been obtained at the mines by the final consumers, or middle-men<sup>25</sup>. Muraru gives distances of 120–200 km from the sources for the flint tools in the six Moldavian settlements he investigated<sup>26</sup>. No matter of what kind, it was transportation that kept the system working.

The same holds true for that vital commodity of agriculturalists, salt<sup>27</sup>. It was in permanent demand for two reasons. On the one hand it had to be added to all kinds of vegetal foods for supplementing the salt level in the organisms of the eaters. On the other hand, it was the most efficient way of preserving the meat of calves culled in autumn, for the winter. The vast territory of the Cucuteni–Tripol’e culture included but one small region in NE Rumania where salt was gained from natural brine<sup>28</sup>. Supplying E Ukraine, including the late “giant settlements”<sup>29</sup>, meant mastering distances of up to ca. 500 km. Although the supply lines were bound to include lengthy portages due to the courses of the major rivers mainly running more or less N–S, secondary distribution at medium range could utilise the rivers.

If boats had indeed been used for such transports, they can be thought to have been of a kind different from the ones used for local needs like short-distance transportation of bulk cargoes like clay or grain, ferrying, or fishing<sup>30</sup>. Pottery and statuettes from afar turning up in Late Tripol’e settlements or graves, possibly going back to intermarriage over considerable distances, can be included into the model of long-range contacts<sup>31</sup>.

\*

So let us overlook the setting of Tripol’e settlements from the perspective of their placing on rivers navigable for boats of early types. But there also should be considered that impressive quantities of water were daily needed for supplying man and beast, at each settlement. Žurakovskij calculates a daily demand of ca. 30.000 l of water for the 400 inhabitants of Žmerinka I and their ca. 600 heads of cattle<sup>32</sup>. According to this standard, a “giant settlement” of ca. 10.000 inhabitants and 15.000 heads of cattle would daily have needed ca. 750.000 l, as is impressive enough. Since as far as my knowledge goes, no built wells seem to be known from Cucuteni–Tripol’e settlements, the water for man and beast was surface water, as favours siting the settlements on water-courses of any size.

For no more than providing drinking water, creeks might have been sufficient, but if navigability is also asked for, only rivers of some size would do. This is my reason for having included in Cat. B–E only sites closely adjacent to *rivers* or their *lower terraces*, basing myself on the terms used in the individual publications. I excluded *creeks*, and sites on higher ground. The selection depends on the wording of the original authors. The condition implies that my numbers are minimal, likely being lower than the real ones now known. There should be considered as well that rivers of some size would have protected one or more sides of a settlement from attack<sup>33</sup>. Positions on rivers, so, do not automatically establish traffic by boat, but

<sup>23</sup> Sergeev 1963, 1.– A Late Tripol’e hoard from Cviklovcy (Cat. E, 175) contained a component of copper objects, not as exclusive as at Karbuna and Luka-Vrublevceckaja (Cat. B, 15) but conspicuous enough (Dergačev 1991, 22). The copper objects derive from the Gumelnița–Karanovo VI culture (Černyh 1978, 59; Tsvek 1996 a, 95.109; Mantu 1998, 56).

<sup>24</sup> Cucuș 1998, 59.

<sup>25</sup> Tsvek 1996 b, 125.

<sup>26</sup> Muraru 1984 (1987), 194.197.

<sup>27</sup> Ellis 1984, 205 f.; Monah 1991; Ellis 1996, 83 f.

<sup>28</sup> Monah 1991, 394 f.; Mantu 1998, 55.

<sup>29</sup> At Solca the salt well first exploited in the Early Neolithic Criș culture and then fallen in disuse, was re-opened in Cucuteni B (Monah 1991, 390).

<sup>30</sup> Magura 1926, 107 f. [200]. A copper fishing-hook and a bone one from the early settlement of Bernovo-Luka may be mentioned (Passek 1961, 56 fig. 9,4–5). Remarkably enough no clear hints at fishing were found in the former island settlement of Drăgușeni (Marinescu-Bîlcu 2000, 43).

<sup>31</sup> Dergačev 1991, 12; 15; 22; 30–31; Tsvek 1996 a, *passim*.

<sup>32</sup> Žurakovskij 1990, 139; Žurakovskij – Zaec 1997.

<sup>33</sup> E.g. Čečel’nik (D 146/F 21); Semeniv-Zelenče: Cat. D, 141/F 20) (Gusev 1990, 202 fig. 1); Ščerbanivka (Cat. C 117).

high numbers on some rivers while other ones have few settlements or none at all demonstrate that there are involved aspects beyond water supply or protection.

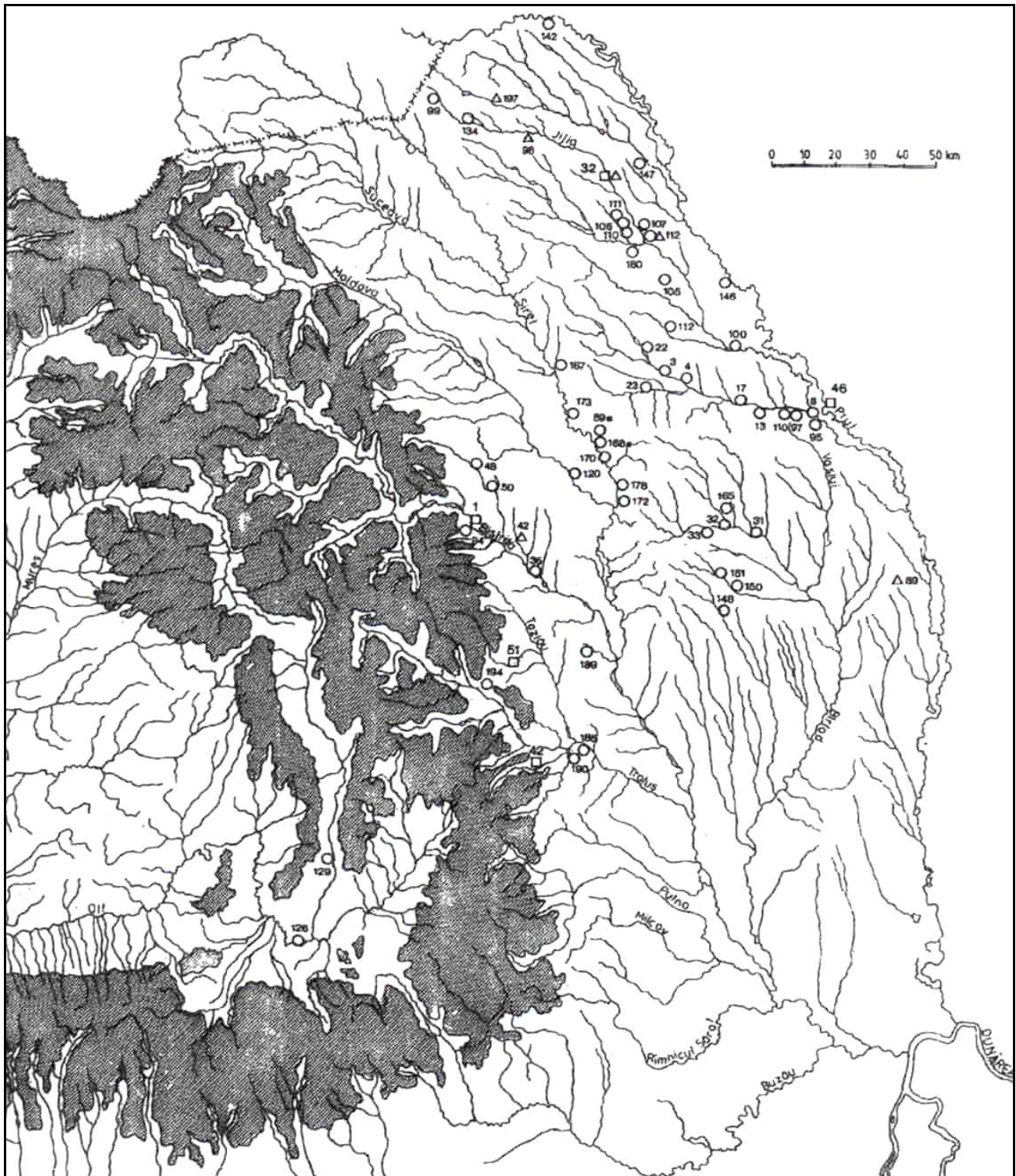


Fig. 1. Distribution of earlier Cucuteni river-bound sites in Romania. Squares with bold numbers: Pre- and Proto-Cucuteni. Circles with small numbers: Cucuteni A. Triangles with small numbers: Cucuteni A-B (issuing from Monah – Cucuș 1985).

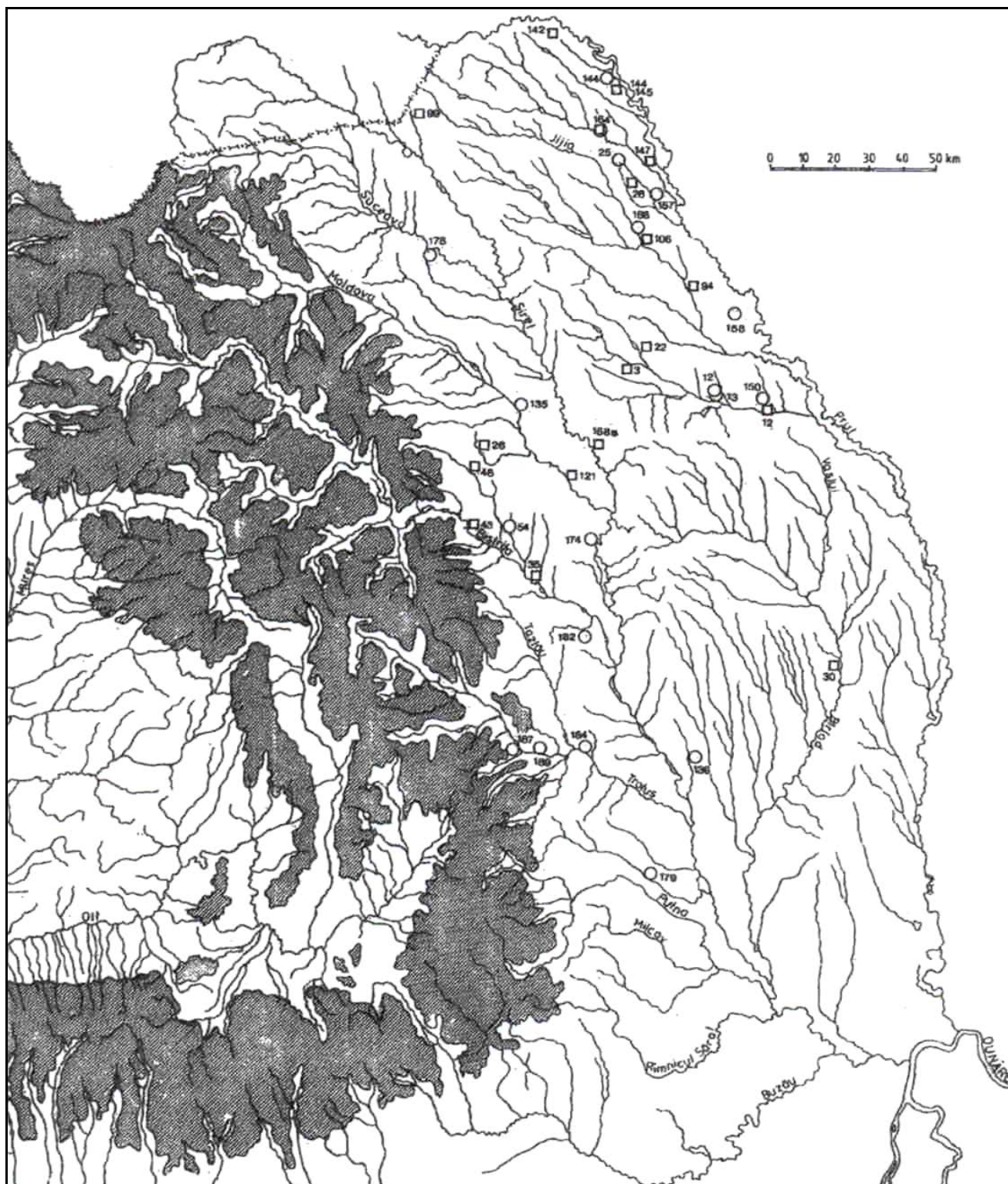


Fig. 2. Distribution of later Cucuteni river-bound sites in Romania. Squares: sites occupied in Cucuteni A/A-B and B (numbers: Cat. C) – Circles: sites not occupied prior to Cucuteni B (issuing from Monah – Cucuș 1985).

\*

The data assembled in Catalogues A–G, demonstrate that from Pre- and Protocucuteni/Tripol’ e A on, a vast number of sites abutted rivers navigable for Copper Age boats. Luka-Vrubleveckaja (Cat. B 15) on the Dnestr by having produced an extraordinary number of copper objects<sup>34</sup> suggests that rivers were essential for long-range trade. Also Karbuna in Moldavia where a unique hoard of hundreds of copper objects of southern origin (n. 23) was found in a Tripol’ e A settlement, could be closely approached by boat on the river Botna unless even reached on Karbuna creek.

For Tripol’ e B/Cucuteni A/A–B, Ryndina-Engovatova’s (1990) survey of a few kilometres of the course of the small r. Čugurec/Ciugureț immediately upstream of its debouchure into the r. Ciugur/ Čugur, a tributary of the Prut, produced no less than three sites (Cat. C 55–56.61). It emphasises the general impression gained from Cat. B-E that traffic by boat, may have been one reason for the siting of a significant number of Cucuteni-Tripol’ e settlements on navigable water-ways. Gusev in studying the placing of Tripol’ e settlements in the Middle Bug area, calls their orientation to rivers regular<sup>35</sup>, and Dergačev not only supports this notion but highlights that *confluences* of two rivers seem to have had some special significance<sup>36</sup>. Such situations are in later periods diagnostic for contact between boatmen’s guilds controlling navigation on each individual river, where travelling traders had to change ship with their goods<sup>37</sup>. The system, being reasonable in itself, might in its origins go back to early times<sup>38</sup>. If so, the existence of settlements at river confluences (Cat. F), would form a special argument for considering traffic by boats.

The *river/creek* confluences are presented in Cat. G. The one of Karbuna (B 3; G 1) where hundreds of early copper objects from Bulgaria were found (n. 24), particularly tantalises for including such cases into our argumentation *pro* long-range trade by boat, but any generalisation would be bound to blur the evidence: data as to the individual creeks probably would permit defining some as navigable and excluding others, but such data are not accessible to me.

Catalogues F and G sum up 52 sites at confluences of rivers (28) or of creeks with rivers (24). If periods are considered, there result the following numbers (in brackets: the percentage of such sites in the total number of river-bound sites at the individual period):

	<i>River/river</i> <sup>39</sup>	<i>river/creek</i> <sup>40</sup>
Precucuteni/Tripol’ e A [52 sites]	6 (11.53 %)	6 (11.53 %)
Cucuteni A/Tripol’ e B [199 sites]	11 (5.52 %)	11 (5.52 %)
Uncertain [155 sites]	5 (3.22 %)	5 (3.22 %)
Cucuteni B/Late Tripol’ e [204 sites]	6 (2.94 %)	6 (2.94 %)

The numbers are not final since, on the one hand only a small percentage of all sites now known has been excavated, and on the other, the dating of a considerable number of sites vaguely mentioned in the literature, is unknown. But these numbers nevertheless express some tendencies that might shed light on the ancient reality.

The frequency of river/river or river/creek confluences differs conspicuously among individual rivers, as becomes apparent below:

<sup>34</sup> Passek 1949, 41; Bibikov 1953, 119 ff. Cf. Cviklovcey (n. 20).

<sup>35</sup> Markevič 1981, 12; Gusev 1990, 129. The same had earlier been suggested by Gamčenko 1926, 32 [191].

<sup>36</sup> Dergačev 1991, 19; 23; 29.

<sup>37</sup> Ellmers 1984, 124; 150; 173.

<sup>38</sup> As to “guilds” in the Neolithic: Höckmann 1996, 38.

<sup>39</sup> B 1, B 4, B 7, B 12, B 19; C 8, C 38, C 57, C 85, C 93, C 104, C 110, C 128, C 167, C 185, C 186; D 114, D 116, D 119, D 121; E 118, E 172, E 192= Cat. F.

<sup>40</sup> B 3, B 20; C 2, C 36, C 43, C 142; D 82, D 99, D 101, D 102, D 118; E 3, E 22, E 140, E 143, E 161, E 171= Cat. G.

	<i>River/river</i>	<i>River/creek</i>
<u>Bahlui</u>	–	C 2= E 4= G 3 [2]
<u>Bahluiet</u>	–	E 22 [1]
<u>Bîrlad</u>	–	C 30= G 4 [1]
<u>Bistrița</u>		
–/Cracău	B 1, C 40= F 1, F 6 [2]	B 3, C 38, E 34= G 1, 5, 19 [3]
<u>Bug</u>		–
–/Sinica	B 4= F 2 [1]	
<u>Cacaina</u>	–	E 44= G 20 [1]
<u>Ciugur</u>		–
–/Ciugureț	C 58= F 8 [1]	
<u>Dnestr</u>		B 19= G 2 [1]
–/Kamenka	B 11= F 4 [1]	–
–/Kubolka	C 87= F 9 [1]	–
–/Zbruč	B 18= F 5 [1]	–
–/Žvanec	B 6= F 3 [1]	–
<u>Ișnovăț</u>	–	C 92= G 7 [1]
<u>Jijia</u>		–
–/Bahlui	C 93, C 94, C 110= F 9-11 [3]	–
–/Sitna	C 104, E 118= F 12, F 23 [2]	–
<u>Olt</u>		–
–/Someș	C 128= F 13 [1]	–
<u>Pрут</u>	–	C 142, C 146/E 147, D 126, D 127, E 150= G 9, 10, 14, 15, 21 [6]
<u>Sărata</u>	–	E 168= G 23 [1]
<u>Siret</u>		–
–/Bîdilița	C 170= F 15 [1]	–
–/Gnizna	D 141= F 20 [1]	–
–/Sirețel	D 139= F 19 [1]	–
<u>Sitna</u>	–	D 143= G 16
<u>Strumok</u>		–
–/Savlanka	D 146= F 21 [1]	–
<u>Tazlău</u>		–
–/Trotuș	D 148= F 22 [1]	–
<u>Trebeș</u>		E 182= G 24
–/Cîrligata	C 189= F 16 [1]	–
<u>Trotuș</u>		–
–/Cașin	C 190, E 183= F 17, F 27 [2]	
“Two nameless rivers”	E 202 = F 28 [1]	–

At a first glance there calls for attention that the number of settlements at river/river confluences equals the one at river/creek ones. Since the latter are much more numerous in nature, the relative superiority of the first group implies a specific reason. This is most clearly seen in Pre-/Protocucuteni and Tripolje A (cat. F 1–6 as opposed to G 1–2). In Cucuteni A/A–B/Tripol’ e B the superiority of river/river sites has dwindled to 11 (F 7–17) by 9 (G 3–11) whereas in Cucuteni B/Late Tripol’ e river/creek sites surpass the former group (8 [G 17–24] by 6 [F 23–28]), suggesting a decrease of the kind of traffic that included more than a single river.



When scanning the maps there become apparent some clusters of river-bound sites, including places at river/river confluences. On the Dnestr, three Tripol’*e* A sites (cat. F 3–5) suggest that long-range traffic by water-ways played some role during the northeastward expansion of the Balkans-style Eneolithic towards the black-earth regions of southern Ukraine. The notion is enhanced by the high number of river/river confluences (6) among all river-bound sites of this period (52), equalling 11.53 % over all. The four such sites east of Rumania form 9.5 % of all 42 river-bound settlements whereas Rumania’s 2 confluence places equal 20 % of all 10 river-bound settlements.

During Cucuteni A/A–B/Tripol’*e* B (Fig. 1) conspicuous clusters existed on and around the upper course of the Jijia, on and around the Bahlui, around the Bârlad, and the upper Bistrița. The highest number is presented by the Jijia. Monah – Cucoș record no less than 13 settlements on its banks (C 95, 96, 97, 106, 107, 107a, 108, 110, 111, 112, 134, 180, 197). Three river/river confluence sites among them (F 10, 12, 13= 23 %) underline the Jijia’s special character from the aspect of river traffic. The situation is extraordinary insofar as there hardly are any settlements not river-bound; the Cucuteni A and A–B people definitely were strictly river-minded.

The Bahlui presents 8 river-bound sites (C 3, 4, 8, 13, 17, 22, 95, 97) but they do not include any at a river/river confluence, and the Bârlad has 4 river-bound sites (C 31–33, 165) without a confluence one as well. In the vicinity of both rivers there are numerous settlements not immediately river-bound, underlining how singular the situation on the Jijia is.

Summing up, the number of river/river confluences during Cucuteni A/A–B and Tripol’*e* B (11) has almost doubled since Precucuteni/Tripol’*e* A, but due to the enormous over-all rise of the number of river-bound sites (199), their percentage has declined to 5.55 %. Specified by regions, confluence sites in Rumania (6.1 %) still surpass those in Moldavia and Ukraine (4.28 %). The cogency of all numbers is, however, weakened by the vast number of sites (Cat. D= 155 sites) the exact dating of which is uncertain. 5 river/river confluence sites equal 3.22 %. The same uncertainty also bears on the numbers (6) and percentages (2.94 %) of all sites at river/river confluences among river-bound places (206) of assured Cucuteni B/Late Tripol’*e* date, including the giant settlements (Cat. A) none of which, however, is situated at a confluence. Such sites form 3.15 % of all river-bound ones in Rumania, and 2.7 % in the east.

Compared with the percentages in earlier periods they at face value suggest a decline in river traffic, but the high number of sites on some rivers while other ones have few or none suggests that the choice of such sites served some special purpose even now (see above). River traffic for supplying the settlements, including the giant ones, both with victuals grown in their vicinity, and imports from afar, is a persuasive candidate.

As was mentioned above the “giants” demand in all kinds of supplies will have been considerable.

It can be thought to have been transported by boat, implying that the system emerged in the Precucuteni/Tripol’*e* A period that left its trace in later river/river confluence sites, still functioned in spite of their reduced percentage, in the Cucuteni A–A–B/Tripol’*e* B period. Their then low percentage results from the condition that the over-all number of river-bound sites going back to human activities, increased manifold while the one of river/river confluences naturally kept unchanged.

There seems to be sense in comparing the river/river confluences with river/creek ones since there exist conspicuous differences. Whereas the former group is dominant on the rivers Dnestr (F 3–5.9, as opposed to G 2), Jijia (F 10–13, 25; no G), and Siret (F 15, 19, 20; no G), the latter rules on the Prut (G 9–10, 13–15, 21–22, as opposed to F 6). The data suggests that there existed two alternative models that support the notion that river/river confluence sites were special<sup>41</sup>. The Prut data might be marred by the fact that the river formed a strictly guarded State border for many years in the 20<sup>th</sup> century, likely implying that archaeological fieldwork on both sides of the river was restricted. The evidence suggests that river/river confluence sites as opposed to river/creek ones, formed groups in their own right. It would favour interpreting the former as testifying to (eventually) long-range river traffic by boat.

There cannot be assessed if sites on the embouchures of rivers into the Black Sea (F 23–24) can be interpreted in the same way as river/river confluences. The Varna finds testifying to long-range coastal navigation in the Black Sea<sup>42</sup>, have no parallels in the Tripol’*e* area at the present state of research.

<sup>41</sup> Rivers with lower numbers of confluences of the one or the other type are omitted from my argumentation.

<sup>42</sup> Höckmann 2003, 138 ff.

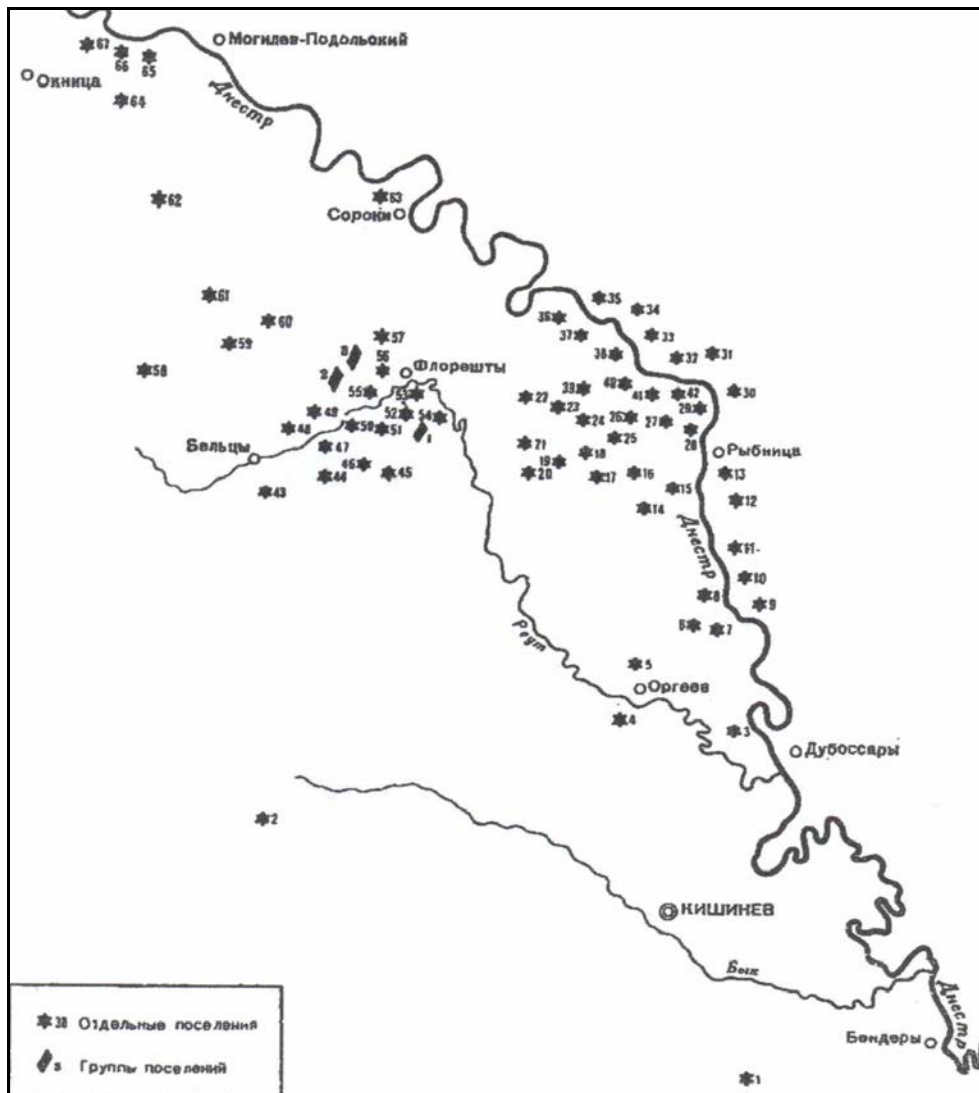
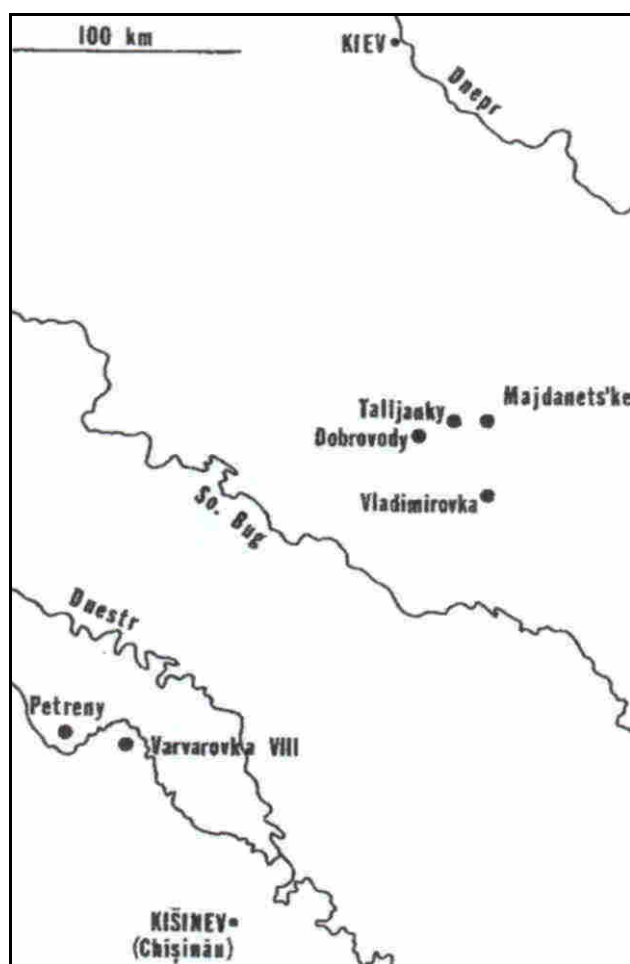


Fig. 3. Tripol'e sites in the middle Dnestr area (Moldavia and Ukraine) after Passek 1958.

- 1 – Gorodka; 2 – Ungeny; 3 – Golerkany [B 11, E 72 - 73]; 4 – Trebuženy; 5 – Botučeny; 6 – Lopatna II [D 55]; 7 – Lopatna I;  
 8 – Lalova [D 54]; 9 – Žury [D 58]; 10 – Popenki [C 79, D 69]; 11 – Zazuljani [D 84 ?]; 12 – Vyhvatincy [E 102]; 13 – Gederim [D 45, E 71]; 14 – Ekimaucy/Echimauți; 15 – Saharna [D 76]; 16 – Pupaucy/Papauți; 17 – Piskorešty/Pișcorești; 18 – Parkany [E 85]; 19 – Šoldanešty/Șoldanești [C 84 ?]; 20 – Oliškany I/Olișceni; 21 – Oliškany II; 22 – Šubka/Șubca; 23 – Šoldanešty/Șoldanești [C 84 ?]; 24 – Glinčeny II/Glinceni; 25 – Glinčeny I; 26 – Mateucy I/Mateuți [D 56]; 27 – Podojma I [C 76, E 86]; 28 – Solončeny II/Solonceni [B 21, C 85, D 40, E 93 ?]; 29 – Solončeny I; 30 – Katerinovka [E 75]; 31 – Bolšoj Molokiš; 32 – Malinki Molokiš; 33 – Sadki [C 81]; 34 – Kamenka [D 49]; 35 – Podojma II [E 86]; 36 – Pojana/Poiana [C 78]; 37 – Raškov [C 80, D 71]; 38 – Žaby; 39 – Miguljany [C 72 ?]; 40 – Mateucy II/Mateuci [D 56]; 41 – Barsuki [E 67]; 42 – Tarasovo [E 95]; 43 – Novye Bel'cy; 44 – Lipovany; 45 – Sanžery; 46 – Radoja; 47 – Putinešty II/Putinești [B 48, E 163]; 48 – Putinešty I; 49 – Aleksandreny/Alexandreni [D 130]; 50 – Marculešty/Marculești [D 132-133]; 51 – Biličeny/Biliceni; 52 – Varvarovka [A 4, E 164-165]; 53 – Gura-Kamenka I [D 131]; 54 – Gura Kamenka II [D 134]; 55 – Marculešty I/Marculești [D 133]; 56 – Florešty I/Florești [C 157, E 162]; 57 – Florešty II; 58 – Ryščany/Rîșceni; 59 – Sofija; 60 – Petreny [A 8, E 203]; 61 – Drokija/Drochia; 62 – Maramonovka; 63 – Soroki/Sorochi [B 23]; 64 – Kodrjany; 65 – Volčinec/Volcineț [E 101]; 66 – Merešovka/Mereșeuca [C 70-71, E 81]; 67 – Naslavča [B 17, D 50–60].

In Passek’s distribution map of the Dnepr area the majority of Tripol’*e* sites seem to be distant from major rivers while only a minority follows them closely (Fig. 3)<sup>43</sup>, and the same insight results from maps of the NW distribution of the Tripol’*e* culture<sup>44</sup>. There the number of sites distant from the major rivers shown in the map, clearly surpasses the number of river-bound ones as well (cf. Cat. D 44 ff.). For a contrast there offers itself the siting of Pitted Ware sites on the upper Dnepr, clinging to rivers like beads on a string<sup>45</sup>. The comparison implies that the minority of river-bound sites of the Cucuteni–Tripol’*e* also goes back not to mere chance but a deliberate choice. It tantalises to think that the Tripol’*e* pottery found in those “foreign” settlements reached them by boat, starting at the Cucuteni–Tripol’*e* river settlements.

Summing up, there certainly existed considerable demand in transportation that kept increasing from Precucuteni/Tripol’*e* A on. On the one hand it was essential for close-range supplying the settlements with bulk goods such as construction timber and firewood, clay, and the harvest that the later the more likely, was grown at some distance from the settlements. On the other hand, small quantities of such precious goods as salt, high-quality flint, obsidian, manganese pigment, and copper were acquired from afar, possibly having been distributed by itinerant traders rather than “down the line”. Under similar conditions in North America few centuries ago, European traders, the famous “voyageurs” of Franco-Canadian stock and their British successors, travelled by bark canoes of indigenous type<sup>46</sup> that may have been similar to Late Neolithic boats on the r. Tisza in Hungary (note 38).



<sup>43</sup> See also Passek 1961, 24 f. fig. 1.

<sup>44</sup> Movša 1971, 37 fig. 1; Vinogradova 1972, 41 fig. 1.

<sup>45</sup> Tjurina 1970, 42 fig. 1; As to the Middle Dnepr Culture see Artemenko 1963, 13 fig. 1; Rassamakin 2004/I, 183; 187 fig. 126; II, 82 f.

<sup>46</sup> Nute 1966.

Fig. 4. Middle and Late Tripol'e „giant settlements” in Ukraine and Moldavia. Majdanets'ke: Majdaneckoe (Cat. A 7). – Talljanky (A 9). – Dobrovody (A 1). – Vladimirovka (A 6; Tripol'e B II). – Petreny (A 8). – Varvarovka

VIII (A 4) (after Ellis 1984, Map 25).

Late Eastern Tripol'e forms the background of the giant settlements (Cat. A). The high numbers of their inhabitants are bound to have caused supply problems, the more so at a time when the steppe encroached upon arable land and the most fertile fields at the recently cultivated periphery of farming land, had become distant from the settlements while in their vicinity the soil had been exhausted by repeated farming. Taking into account that most “giant settlements” form a cluster with no more than c. 20 km distance among each other (fig. 4)<sup>47</sup>, conflicts were bound to arise when the cultivation fronts of two “giants” hit upon each other. The scenario includes smaller villages and hamlets inbetween the “giants”. Their status can be thought to have been dependent on the “giants”, while they contributed to their subsistence, and were first in meeting trouble when their slash-and-burn fields hit upon those of a “vassal” of another “giant”.

The considerable demand in close-range transportation for supplying the settlements with grain, timber, firewood, and eventually clay may in part have been covered by wheeled vehicles, in spite of their depending on some kind of roads<sup>48</sup>. The carrying capacities of boats and carts will have been similar but only boats were fit for long-range transportation that included portages.

Since the connections between Cucuteni and Eastern Tripol'e are clearer than with Western Tripol'e, down-the-line mediation by Western tribes seems unlikely. The data rather make think that there existed contacts between Cucuteni and Eastern Tripol'e that somehow crossed the western tribes' territory without involving them in a way traceable by archaeology. The pattern suggests also to go back to river navigation as so many other features in the Cucuteni-Tripol'e culture.

Is a wheel round ? It is.

\*

### Catalogues

(MO: Moldavia; RO: Romania; U: Ukraine)

#### Catalogue A: Giant settlements of the late Eastern Tripol'e culture

A 1	Dobrovody, oblast' Vinnica (?), U (Šiškin 1973, 38 fig. 3; Ellis 1984, 188; 194 fig. 71; Ellis 1984 [1987], 182; 187 Map 5; Mantu 1998, 51):	r. Babanka (?)
A 2	Glybočok, U (Ellis 1984, 187 Map 5; 196 Map 26):	r. Gornyj Tikič
A 3	Veselyj Kut, obl. Čerkassy, U (Cvek 1995; Tsvek 1996, 101 f.:	r. Gornyj Tikič
A 4	Varvarovka VIII, raj. Florești, MO (Markevič 1972, 49 Markevič 1973, 22; Ellis 1984, 185; 188):	r. Reut/Răut
A 5	Nebelivka, obl. Vinnica (?), U (Ellis 1984, 196 Map 26 “d”):	r. Sinjuha (?)
A 6	Vladimirovka, obl. Kirovograd, U (Passek 1949, 79 ff.107.108; Šmaglij 1959, 52; Ellis 1984, 187 Map 25):	r. Sinjuha
A 7	Majdaneckoe, obl. Vinnica (?), U (Šiškin 1973, 37 fig. 2; Šmaglij et al. 1973, 30 fig. 8; Ellis 1984, 188; 193 fig. 70; Šmaglij 1990; Šmaglij – Videjko 1990b; Videjko 1990; Mantu 1998, 51.96.129); Šmaglij – Videjko 2001-2, 51 ff. fig. 2–5:	r. Strumok
A 8	Petreny, raj. Florești (?), MO (Passek 1949, 102.107.108 [Tripol'e B]. 155 [Tripol'e C]; Markevič 1981, 18; 20 fig. 14; Ellis 1984, 183; 193 fig. 69; Ellis 1984 [1987], 181 fig. 1):	“over a river valley”
A 9	Tal'janki, obl. Vinnica (?), U (Šiškin 1973, 40 fig. 5; Ellis 1984, 188; 187 Map 25; 195 fig. 72.- Ellis 1984 (1987), 183 fig. 4; Kruc 1990; Ryžov 1990; Mantu 1998, 51;96;129):	“over a river”

<sup>47</sup> Ellis 1984, 187 Map 25 (Fig. 4).

<sup>48</sup> Pare 2006, 53.

**Catalogue B: Tripol’e A/Pre- and Protocucuteni sites on/near rivers**

B 1	Piatra Neamț–Izvoare, jud. Neamț, RO (Passek 1949, 31; Vulpe 1957.– Passek 1961, 91; Monah – Cucuș 1985, 111 no. 581):	r. Bistrița + r. Cracău
B 2	Brad-Cețățuia, jud. Bacău, RO (Popovici 2000, 52 no. 49.1.1):	r. Bistrița
B 3	Karbuna, raj. Čimišlija/Cimișlia, MO (Sergeev 1963, 1):	r. Botna +creek
B 4	Sabatinovka II, obl. Kirovograd, U (Passek 1949, 48 ff.; Zbenovič 1996, 32 f.):	r. Južnij Bug + r. Sinica
B 5	Babšin, obl. Hmel’nickij, U (Passek 1961, 60; Zbenovič 1996, 2):	r. Dnestr
B 6	Bernaševka, obl. Vinnica, U (Zbenovič 1980; Zbenovič 1996, 2 ff.):	r. Dnestr + r. Žvanec
B 7	Bernaševka II, obl. Vinnica, U (Zbenovič 1996, 12):	r. Dnestr
B 8	Bernovo-Luka, obl. Černigov, U (Passek 1958, 35 fig. 2 no. 70; Passek 1961, 42 ff; Zbenovič 1996, 12 f.):	r. Dnestr
B 9	Bernovo Malinki, obl. Hmel’nickij, U (Zbenovič 1996, 13 f.):	r. Dnestr
B 10	Braga-Bereg, obl. Hmel’nickij, U (Passek 1958?, 35 fig. 2 no. 74; Passek 1961, 17.34; Zbenovič 1996, 14):	r. Dnestr
B 11	Golerkany, raj. Dubossary/Dubăsari, MO (Passek 1958?, 35 fig. 2 no. 57; Passek 1961, 70 ff.; 28 fig. 2 no. 3):	r. Dnestr + r. Kamenka (“very close”)
B 12	Gorodnica, U (Passek 1949, 46; Passek 1958, fig. 2 no. 77):	r. Dnestr
B 13	Korman’, obl. Černovcy, U (Zbenovič 1996, 15 f.):	r. Dnestr
B 14	Lenkovcy, obl. Černovcy, U (Černyš 1955, 136; Passek 1961, 38; Zbenovič 1996, 16 ff.):	r. Dnestr
B 15	Luka-Vrubleveckaja, obl. Hmel’nickij, U (Bibikov 1953, 13 fig. 1; Passek 1958?, 35 fig. 2 no. 72; Passek 1961, 13 f; Ellis 1984, 132 Map 14; Zbenovič 1996, 20 ff.):	r. Dnestr
B 16	Luka-Ustinskaja, obl. Hmel’nickij, U (Passek 1958?, 35 fig. 2 no. 73; Passek 1961, 18; Zbenovič 1996, 24):	r. Dnestr
B 17	Naslavča-Kaplievka, obl. Černovcy, U (Passek 1961, 26; 28 Abb. 2 no. 67):	r. Dnestr
B 18	Okopol, obl. Tarnopol’, U (Zbenovič 1996, 24 ff.):	r. Dnestr + r. Zbruč
B 19	Oževo, obl. Černovcy, U (Zbenovič 1996, 24):	r. Dnestr + creek
B 20	Solončeny I–Lancugor, raj. Rezinsk, MO (Passek 1958, 35 fig. 2 no. 58-59; Passek 1961, 60 ff.105; 28 fig. 2 no. 29; 186 fig. 51 no. 23):	r. Dnestr
B 21	Solončeny II (Passek 1961, 28 fig. 2 no. 28):	r. Dnestr
B 22	Sokol, obl. Kamenec Podol’sk, U (Passek 1961, 58, 60; Vinogradova 1972, 24 fig. 1 no. 76):	r. Dnestr
B 23	Soroka, raj. Soroka, MO (Passek 1958, 28 fig. 2 no. 63):	r. Dnestr
B 24	Staraja Ušica, U (ibid. no. 78):	r. Dnestr
B 25	Voevodčincy, MO (Passek 1958, 35 fig. 2 no. 66):	r. Dnestr
B 26	Vološkovo, obl. Černovcy, U (Zbenovič 1996, 14):	r. Dnestr
B 27	Voronovica, obl. Černovcy, U (ibid. 15):	r. Dnestr
B 28	Žvanec, obl. Hmel’nickij, U (ibid. 15):	r. Dnestr
B 29	Krasnostavka, U (Passek 1958, 35 fig. 2 no. 93):	r. Gornyj Tikič
B 30	Višnepol’, obl. Tal’noe, U (ibid. no. 94.- Mikič 1990):	r. Gornyj Tikič
B 31	Corovia, RO (Passek 1958, 35 fig. 2 no. 53):	r. Jijia
B 32	Trușești, jud. Botoșani, RO (ibid. no. 98; Monah – Cucuș 1985, 156 no. 1046):	r. Jijia
B 33	Vlădeni, jud. Iași, RO (Passek no. 51):	r. Jijia
B 34	Gajvoron, obl. Kirovograd, U (Zbenovič 1996, 29 f.):	r. Južnij Bug
B 35	Grenovka, obl. Kirovograd, U (Passek 1958, 35 fig. 2 no. 81.– Zbenovič 1996, 30):	r. Ju. Bug
B 36	Konstantinovka, obl. Nikolaev, U (Zbenovič 1996, 31):	r. Ju. Bug
B 37	Krasnen’koe, obl. Nikolaev, U (ibid. 31):	island in r. Ju. Bug
B 38	Mogil’noe, U (Passek 1958, 35 fig. 2 no. 83-84):	r. Ju. Bug

B 39	Zaval'e, obl. Odessa, U (Zbenovič 1996, 31):	r. Ju. Bug
B 40	Partizanske Konjušni, obl. Odessa, U (ibid. 31):	r. Molokiš
B 41	Ozarincy, U (Passek 1961, 32 ff.):	r. Nemia
B 42	Bogdănești, jud. Bacău, RO (Passek 1958, 35 fig. 2 no. 45; Monah – Cucuș 1985, 66 no. 126):	r. Prut
B 43	Larga Jijia, jud. Iași, RO (Passek no. 50; Monah – Cucuș 1985, 112 no. 584):	r. Prut
B 44	Novosel'e, MO (Passek no. 56):	r. Prut
B 45	<i>vacat</i>	
B 46	Ungheni, raj. Călarași, MO (Passek 1949, 41; Passek 1958, fig. 2 no. 99):	r. Prut
B 47	Vitilovka, MO (Passek 1958, fig. 2 no. 55):	r. Prut
B 48	Putinești/Putinești II, raj. Edincy/Edineț, MO (Passek 1961, 28 fig. 2 no. 48; Popovici 2000, 219 no. 20.22.1.1)	r. Răut/Reut
B 49	Borisovka, U (Passek 1949, 41.55; Passek 1958, fig. 2 no. 87):	r. Ros'
B 50	Ciorani, jud. Vrancea RO (Passek 1958, 35 fig. 2 no. 43):	r. Siret
B 51	Poduri-Dealul Ghindaru, jud. Bacău, RO (Monah – Cucuș 1985, 131 no. 794; Popovici 2000, 55 no. 63.5.1):	r. Tazlău Sărat
B 52	Trostjanec, obl. Vinnica, U (Zbenovič 1996, 34):	“tributary of Južnij Bug”

### Catalogue C: Cucuteni A/A-B, and Tripol'e B sites on or near rivers

C 1	Bălțați, jud. Vaslui, RO (Popovici 2000, 106 no. 4.1.2):	r. Bahlui
C 2	Bălțați-confluența, RO (Monah – Cucuș 1985, 59 no. 62):	r. Bahlui + creek
C 3	Belcești-Dealul Scarchiilor, jud. Iași, RO (ibid. 60 no. 75; Popovici 2000, 107 no.5.1.1):	r. Bahlui
C 4	Bârlești-La Moară, jud. Iași, RO (Monah – Cucuș 1985, 63 no. 101):	r. Bahlui
C 5	Bârlești-Pe Loturile Totoeștilor, RO (ibid. 63 no. 103):	r. Bahlui
C 6	Bulboaca-Vatra satului, jud. Vaslui, RO (ibid. 71 no. 186):	r. Bahlui
C 7	<i>vacat</i>	
C 8	Cristești, jud. Iași, RO (ibid. 81 no. 290):	r. Bahlui
C 9	Erbiceni-La Moară, jud. Iași, RO (Popovici 2000, 119 no. 26.1.1):	r. Bahlui
C 10-11	Iași, RO (ibid. 125 no.38.4; 126 no. 38.7):	r. Bahlui
C 12	Iași-Curtea Domnească, jud. Iași, RO (Monah – Cucuș 1985, 108 no. 552):	r. Bahlui
C 13	Iași-Splaiul Bahlului, RO (ibid. 109 no. 558):	r. Bahlui
C 14	Lețcani, jud. Iași (ibid. 128 no. 4):	r. Bahlui
C 15(?)	Lețcani-La Damian (Monah – Cucuș 1985, 113 no. 593):	r. Bahlui
C 16	Lețcani-Movila Vătăvroici (ibid. 113 no. 594):	r. Bahlui
C 17	Lețcani-Vatra satului (ibid. 113 no. 596):	r. Bahlui
C 18	Podu Iloaiei, jud. Iași, RO (Monah – Cucuș 1985, 130 no. 787; Popovici 2000, 135 no. 56.4.1):	r. Bahlui
C 19	Rediu-Via Teodorescu, jud. Iași, RO (Monah – Cucuș 1985, 139 no. 878):	r. Bahlui
C 20	Sârca, jud. Iași, RO (ibid. 145 no. 937):	r. Bahlui
C 21	Spinoasa-Poale Catargului, jud. Iași, RO (Popovici 2000, 120 no. 26.3.2):	r. Bahlui
C 22	Ulmi-La Odaie, jud. Iași, RO (Monah – Cucuș 1985, 159 no. 1078, Popovici 2000, 108 no. 5.6.2):	r. Bahlui
C 23	Bălțați-Cantonul CFR, jud. Iași, RO (Monah – Cucuș 1985, 59 no. 61):	r. Bahluiet
C 24	Bălțați-Livada I.A.S. (ibid. 59 no. 63):	r. Bahluiet
C 25	La Iaz, jud. Iași, RO (Popovici 2000, 106 no.4.1.4):	r. Bahluiet
C 26	<i>vacat</i>	
C 27(?)	Săveni-La Grădini, jud. Botoșani, RO (ibid.143 no. 912):	r. Bașeu
C 28	Ștefănești-Dealul Boboc, jud. Botoșani, RO (ibid. 150 no. 1001):	r. Bașeu
C 29	Știubeni-La Bordei, jud. Botoșani, RO (ibid. 151 no. 1007):	r. Bașeu
C 30	Bârlad, jud. Vaslui, RO (ibid. 62 no. 96):	r. Bîrlad + creek
C 31	Negrești-Pe Țarină, jud. Vaslui, RO (ibid. 123 no. 705):	r. Bârlad
C 31a	Negrești-La Moara (ibid. 123 no. 704):	r. Bârlad
C 32(?)	Negrești-La Pod (ibid. 123 no. 706):	r. Bârlad

- C 33 Todirești-Pârâul Izvorului, jud. Vaslui, RO (ibid. 154 no. 1033): r. Bârlad
- C 34 Calu, jud. Neamț, RO (Vinogradova 1972, 41 fig. 1 no. 5): r. Bistrița
- C 35 Costișa-Dealul Moenii, jud. Neamț, RO (Monah – Cucuș 1985, 79 no. 268; Cucuș 1999, 177 no.14; Popovici 2000, 161 no. 18.1.2): r. Bistrița
- C 36 Hârlești-Șerbănești, jud. Bacău, RO (Monah – Cucuș 1985, 105 no. 510): r. Bistrița
- \*C 37 Brad-Cetățuia: cf. B 2 r. Bistrița
- C 38 Piatra Neamț-Bâta Doamnei, jud. Neamț, RO (Monah – Cucuș 1985, 87 f. no. 340; Popovici 2000, 171 no. 42.2.1): r. Bistrița + creek
- C 39 Piatra Neamț-Cetățuia, RO (Popovici 2000, 173 no. 42.4.1): r. Bistrița
- C 40 Piatra Neamț-Izvoare, RO: cf. B 1 r. Bistrița + r. Cracău
- C 41 Șerbănești, jud. Bacău, RO (Popovici 2000, 48 no. 28.7.1): r. Bistrița
- C 42 Traian-Dealul Fântânilor, jud. Vaslui, RO (Vinogradova 1972, 41 fig. 1 no. 4; Monah – Cucuș 1985, 155 no. 1043): r. Bistrița
- C 43 Văleni-Cetățuia, jud. Neamț, RO (Monah – Cucuș 1985, 162 no. 1106): former island in r. Bistrița
- C 44 Usatovo, city of Odessa, U (Passek 1949, 97.112.190 ff.): Black Sea, Hadžibej Bay
- C 45 Alexandrești, raj. Rybnica, MO (Popovici 2000, 224 no. 30.1.3): r. Camenca
- C 46 Kamenka-Buteșty I, raj. Raškany/Rășcani, MO (Passek 1961, 28 fig. 2 no. 34; Popovici 2000, 220 no. 21.2.2.1): r. Camenca
- C 47 Hlingenii I, raj. Șoldănești, MO (ibid. 234 no. 36.9.1.1): r. Černa
- C 48 Bodești-Frumușica, jud. Neamț, RO (Monah – Cucuș 1985, 65 no. 121): r. Cracău
- C 49(?) Dochia-Călimani, jud. Neamț, RO (ibid. 88 no. 347): r. Cracău
- C 50 Girov-Manioaia, jud. Neamț, RO (ibid. 99 no. 463): r. Cracău
- C 51 Hășnacenii Mari, raj. Drochia, MO (Popovici 2000, 215 no. 16.8.1): r. Cubolta
- C 52 Putinești III, raj. Edincy, MO (ibid. 219 no. 20.22.1.2): r. Cubolta
- C 53-54 Costești, raj. Raškany/Rășcani, MO (ibid.225 no. 30.6.1.1-2): r. Čugur/Ciugur
- C 55-56 Druța I-II, raj. Raškany, MO (Ryndina – Engovatova 1990, 112 fig. 1; Popovici 2000, 226 f. no. 30.17.1.1-2): r. Čugur/Ciugur
- C 57 Duruitoarea Nouă, raj. Raškany, MO (Popovici 2000, 228 no.30.24.2.1): r. Čugur/Ciugur
- C 58 Duruitoare, raj. Raškany, MO (ibid.): r. Čugur + r. Ciugureț
- C 59 Pociumbeni, raj. Raškany, MO (ibid. 227 no. 30.17.2.1): r. Čugur/Ciugur
- C 60 Văratice VI, raj. Raškany, MO (ibid. 228 no. 30.24.3.1): r. Čugur/Ciugur
- C 61 Căsoaia cu ace, raj. Raškany, MO (Ryndina – Engovatova 1990, 112): r. Čugurec/Ciugureț
- C 62 Babino-Jama, obl. Černovcy, U (Vinogradova 1972, 41 fig. 1 no. 17): r. Dnestr
- C 63 Bol’šoj Molokiš, obl. Vinnica, U (Passek 1961, 28 fig. 2 no. 31): r. Dnestr
- C 64 Cremenciug II, raj. Soroka, MO (Popovici 2000, 231 no. 34.7.1.1): r. Dnestr
- C 65 Japca-Bursuc, raj. Kamenka, MO (Popovici 2000, 213 no. 6.9.2): r. Dnestr
- C 66 Jora de Sus, raj. Orhei, MO (ibid. 223 no. 28.15.3.1): r. Dnestr
- C 67 Luka-Vrubleveckaja II, obl. Kamenec-Podol’skij (Passek 1949, 46.55.– Bibikov 1956, 13 f.- Popovici 2000, 244 no. 8.34.1): r. Dnestr
- C 68 Makar’evka, obl. Černovcy, U (Passek 1961, 24 fig. 1 no. 43.- Vinogradova 1972, 41 fig. 1 no. 19): r. Dnestr
- C 69 Malinki Molokiš, obl. Vinnica, U (Passek 1961, 28 fig. 2 no. 32): r. Dnestr
- C 70 Merešovka/Mereșeuca, raj. Ocnîța, MO (Passek 1961, 24 fig. 1 no. 132; 28 fig. 2 no. 66.– Markevič 1981, 54; Popovici 2000, 222 no. 27.12.1.1): r. Dnestr
- C 71 Merešovka-Četățuia/Cetățuia (Passek 1961, fig. 1 no. 134): r. Dnestr
- C 72 Miguleny, raj. Rybnica/Râbnița, MO (Vinogradova 1972, fig. 1 no. 34): r. Dnestr
- C 73 Mihajlovka I, obl. Ternopol, U (Passek 1961, 248, 186 fig. 51 no. 28; Popovici 2000, no. 25.12.24.1): r. Dnestr
- C 74 Nezviska, obl. Stanislav, U (Passek 1949, 46.53; Passek 1961, 183.192): r. Dnestr
- C 75 Nezvisko, obl. Černovcy, U (Passek 1949, 46; Passek 1961, 14.103.105.139).– Černyš 1962, 10; Popovici 2000, 245 no. 9.4.15.1): r. Dnestr
- C 76 Podojma, obl. Vinnica, U (Vinogradova 1972, fig. 1 no. 28): r. Dnestr

- C 77 Polivanov jar, obl. Černovcy, U (Passek 1961, 29; 186 fig. 51 no. 25; Popovici 2000, 242 no. 3.8.2): r. Dnestr
- C 78 Poiana I, raj. Šoldanešty, MO (Passek 1961, 28 fig. 2, no. 36; Popovici 2000, 234 no. 36.14.1.1): r. Dnestr
- C 79 Popenki, raj. Rybnica, MO (Popovici 2000, 224 no. 29.17.1.1): r. Dnestr
- C 80 Raškov, obl. Černovcy, U (Passek 1961 loc.cit. no. 5; fig. 2 no. 37.- Vinogradova 1972, 41 fig. 1 no. 30): r. Dnestr
- C 81 Sadki, raj. Vinnica, MO (Passek 1961, 28 fig. 2 no. 33): r. Dnestr
- C 82 Slobozia-Vărăncău, raj. Soroca, MO (ibid. 231 no. 34.21.2.1): r. Dnestr
- C 83 Sokol, obl. Kamenec Podol'sk, U (ibid. 58.60; Passek 1961, 24 fig. 1 no. 76): r. Dnestr
- C 84 Šoldanešty, raj. Rezinsk/Rezina, MO (Passek 1961, 144): r. Dnestr
- C 85 Solončeny II, raj. Rezinsk, MO (Passek 1949, 139.183; Passek 1961, 28 fig. 2 no. 28): r. Dnestr
- C 86 Vasilievka, obl. Černovcy, U (Popovici 2000, 243 no. 7.15.1): r. Dnestr + r. Kubolka
- C 87 Zaleščiki, obl. Ternopol', U (Passek 1961, 24 fig. 1 no. 22; Vinogradova 1972, 41 fig. 1 no. 22): r. Dnestr
- C 88 Huși, jud. Vaslui, RO (Vinogradova 1972, fig. 1 no. 10; Monah – Cucuș 1985, 108 no. 546): r. Dragoslovăț
- C 89 Mirnoe, obl. Odessa, U (Popovici 2000, 246 no. 18.7.7.1): r. Drakula
- C 89a Crivești, jud. Iași, RO (Monah – Cucuș 1985, 81 no. 294): r. Găureana + creek
- C 90 Zarubincy, obl. Čerkassy, U (ibid. 240 no. 13.27.1): r. Gornyj Tikič
- C 91 Lupești-Fîntina Mare, jud. Vaslui, RO (Monah – Cucuș 1985, 115 no. 619): r. Horincea
- C 92 Horodișteea-Sub dealul Crucii, jud. Botoșani, RO (ibid. 107 no. 543) r. Ișnovăț + creek
- C 93 Albești-La Pod, jud. Botoșani, RO (Monah – Cucuș 1985, 53 no. 4; Popovici 2000, 61 no. 1.1.1): r. Jijia
- C 94 Andrieșeni-Dealul Arinilor, jud. Iași, RO (Monah – Cucuș 1985, 54 no. 11; Popovici 2000, 104 no. 2.1.1): r. Jijia
- C 95 Chiperești-Confluența, jud. Iași, RO (Monah – Cucuș 1985, 74 no. 216): r. Jijia + r. Bahlui
- C 96 Corlăteni, jud. Botoșani, RO (Vinogradova 1972, fig. 1 no. 13; Monah – Cucuș 1985, 77 no. 253): r. Jijia
- C 97 Cristești-În Braniște, RO (Monah – Cucuș 1985, 81 no. 291): r. Jijia + r. Bahlui
- C 98 Vorniceni, jud. Dorohoi, RO (Vinogradova 1972, fig. 1 no. 15): r. Jijia
- C 99 Hilișeu-Dealul Urlei, jud. Botoșani, RO (Monah – Cucuș 1985, 110 no. 568): r. Jijia
- C 100 Mihail Kogălniceanu-La Hatie, jud. Iași, RO (ibid. 118 no. 645): r. Jijia
- C 101 Măndrești, jud. Dorohoi, RO (Vinogradova 1972, fig. 1 no. 14): r. Jijia
- C 102 Pașcani, jud. Iași, RO (Popovici 2000, 133 f. no. 54.3.1, 54.3.3, 54.3.4): r. Jijia
- C 103(?) Pogărești-La Gârla, jud. Botoșani, RO (Monah – Cucuș 1985, 132 no. 797): r. Jijia
- C 103a Popricani-La Lutărie I, jud. Iași, RO (ibid. 133 no. 817): r. Jijia
- C 104 Popricani-Cărmidărie, RO (Popovici 2000, 136/58.5.1): r. Jijia
- C 105 Răuseni, jud. Botoșani, RO (Monah – Cucuș 1985, 137 no. 858.- Popovici 2000, 74 no. 50.2.1): r. Jijia
- C 106 Todireni-Curtea Veche, jud. Botoșani, RO (ibid. 77/62.5.1): r. Jijia + r. Sitna
- C 107 Trușești-Țugueta, jud. Botoșani, RO (Monah – Cucuș 1985, 156 no. 1046; Popovici 2000, 77 no. 63.6.1-3): r. Jijia
- C 107a Trușești-La capac, jud. Botoșani, RO (Monah – Cucuș 1985, 156 no. 1047; Popovici 2000, 79 no. 63.6.5-6): r. Jijia
- C 108 Trușești-Cantonul CFR 47 (Monah – Cucuș 1985, 156 no. 1048): r. Jijia
- C 109 Trușești-Movila din șesul Jijiei (Popovici 2000, 157 no. 1050): r. Jijia
- C 110-111 Trușești-Vatra satului I, III (Monah – Cucuș 1985, 157 no. 1051, 1053): r. Jijia
- C 111 Țuțora-Confluența, jud. Iași, RO (Popovici 2000, 152 no.84.1.1): r. Jijia + r. Bahlui
- C 112 Mălăești, jud. Iași, RO (Monah – Cucuș 1985, 116 no. 634; Popovici 2000, 123 no. 31.4.1): r. Jijioara
- C 113 Ladycyn, obl. Ternopol, U (Popovici 2000, 249 no. 25.17.8.1): r. Ju. Bug



- C 114 Pečera, raj. Tulčin, MO (Gusev 1990, 129; Popovici 2000, 250 no. 18.20.1): r. Ju. Bug
- C 115 Sabatinovka I, obl. Kirovograd, U (Popovici 2000, 246 no. 16.11.1): r. Ju. Bug
- C 116 Trostjanec, obl. Ternopol, U (ibid. 249 no. 25.16.17.1): r. Ju. Bug
- C 117 Ščerbanivka, U (Minns 1913, 133 fig. 28): r. Krasnaja
- C 118 Beciu-Vatra satului, jud. Vrancea, RO (Monah – Cucuș 1985, 60 no. 71): r. Milcov
- C 119 Vadu Moldovei-Ciumulești, jud. Suceava, RO (Popovici 2000, 182 no. 86.2.1): r. Moldova
- C 120 Văleni-Între Adâncăți, jud. Neamț, RO (Monah – Cucuș 1985, 162 no. 1110): r. Moldova + creek
- C 121 Văleni-La Humărie (ibid. 162 no. 1111): r. Moldova
- C 122(?) Sângeorgiu de Mureș-Gyera-alja, jud. Mureș, RO (Popovici 2000 ibid. 145 no. 934): r. Mureș
- C 123 Ozarincy, obl. Ternopol, U (Popovici 2000, 248 no. 25.12.28.1): r. Nemiza
- C 124 Hristici-Zastânca, raj. Soroka, MO (ibid. 231/34.12.2.1): r. Okolina
- C 125 Bixad-Cetatea Șea, jud. Covasna, RO (Monah – Cucuș 1985, 62 no. 94): r. Olt
- C 126 Bod-Movila Popii (Priesterhügel), jud. Brașov, RO (Monah – Cucuș 1985, 64 no. 117; Popovici 2000, 80 no. 3.1.1): r. Olt
- C 127 Hărmăn-Kössberg, jud. Brașov, RO (Popovici 2000, 82 no. 19.1.2): r. Olt
- C 128 Malnaș-Băi, jud. Covasna, RO (ibid. 91/22.4.1–2): r. Olt
- C 129 Malnaș-Culme nisipoasă, jud. Covasna, RO (Monah – Cucuș 1985, 115 no. 620): r. Olt + r. Șomoș
- C 130 Mestecaniș-Școala, jud. Covasna, RO (Popovici 2000, 87 no. 17.4.3): r. Olt
- C 131(?) Olteni-Cetatea Fetii, jud. Covasna, RO (Monah – Cucuș 1985, 125 no. 727; Popovici 2000, 83 no. 5.2.1): r. Olt
- C 132 Drăgușeni, jud. Botoșani, RO (Crișmaru 1977; Cârciumaru 2000, 19; Marinescu-Bâlcu – Bolomey 2000): r. Podriga, former island
- C 133 Durnești-Cotul Morii, jud. Botoșani, RO (Popovici 2000, 68 no. 24.5.1): r. Ponoare
- C 134 Bajura-La Izunie, jud. Botoșani, RO (Monah – Cucuș 1985, 57 no. 35; Popovici 2000, 65 no. 18.1.1): r. Prut
- C 135 Bogdănești, raj. Bălți, MO (Popovici 2000, 211 no. 4.4.1): r. Prut
- C 136 Brânzeni-Badragii Noi, raj. Edincy/Edineț, MO (ibid. 216 no. 18.4.1.2): r. Prut
- C 137 Corpaci, raj. Edineț, MO (ibid. 217 no. 18.6.1): r. Prut
- C 138 Crasnaleuca, jud. Botoșani, RO (ibid. 63 no. 14.1.1): r. Prut
- C 139 Cucuștii Vechi, raj. Edincy, MO (ibid. 217 no. 18.7.2): r. Prut
- C 140(?) Horia-La Lutărie, jud. Botoșani, RO (ibid. 71 f. no. 42.1.1): r. Prut
- C 141 Lipcani-Zemstvo, raj. Bălți, MO (Popovici 2000, 212 no. 4.16.1): r. Prut
- C 142 Miorcani-Duruitoare, jud. Botoșani, RO (Monah – Cucuș 1985, 118 no. 654): r. Prut + creek
- C 143 Mitoc-La Lutărie, jud. Botoșani, RO (Popovici 2000 71 no. 42.1.1.): r. Prut
- C 144 Mitoc-La Pisc (Monah – Cucuș 1985, 119 no. 663); Popovici 2000, 71 no. 42.2.2): r. Prut
- C 145 Pererâta-Zamca, raj. Bălți, MO (Popovici 2000, 212 no.4.20.1): r. Prut
- C 146 Românești-La Râpa, jud. Botoșani, RO (Monah – Cucuș 1985, 141 no. 894; Popovici 2000, 74 no. 53.2.1): r. Prut
- C 147 Ștefănești, jud. Botoșani, RO (Monah – Cucuș 1985, 150 no. 1000): r. Prut
- C 148 Ivănești-La gura pâraului Vlădeștilor, jud. Vaslui, RO (Monah – Cucuș 1985, 111 no. 578): r. Racova
- C 149(?) Poienesti-Măgura Dealul Teilor, jud. Vaslui, RO (ibid. 132 no. 806): r. Racova
- C 150 Pungești-Dealul Bătrâna, jud. Vaslui, RO (Monah – Cucuș 1985, 135 no. 833; Popovici 2000, 198 no. 54.5.1): r. Racova
- C 151 Toporăști-Borcutul Toporăștilor, jud. Vaslui, RO (ibid. 155 no. 1041): r. Racova
- C 152 Toporăști, jud. Vaslui, RO (Monah – Cucuș 1985, 155 no. 1011; Popovici 2000, 198 no. 54.9.1): r. Racova

- C 153 Krasnostavka, obl. Čerkassy, U (Passek 1949, 41.55; Popovici 2000, 239, no. 1.10.9.1): r. Radoj
- C 155 Terebna, raj. Edincy/Edineț, MO (ibid. 218 no.18.20.1): r. Racovăț/Rakovec Sec
- C 154 Volovica III, raj. Sorocea, MO (ibid. 234 no. 34.28.1.1): r. Racovăț/Rakovec Sec
- C 156 Corlăteni, raj. Raškany/Rășcani, MO (Popovici 2000, 225 no. 30.5.1): r. Răut/Reut
- C 157 Floreșty, raj. Floreșty/Florești, MO (Passek 1961, 192; Vinogradova 1972, 41 fig. 1 no. 29): r. Răut/Reut
- C 158 Nicoreni, raj. Kamenka/Camenca, MO (Popovici 2000, 215 no. 16.12.1): r. Răut/Reut
- C 159 Pelinia IV, raj. Raškany, MO (ibid. 226 no. 30.14.1): r. Răut/Reut
- C 160 Voronkovo, raj. Floreșty, MO (Vinogradova 1972, fig. 1 no. 33): r. Răut/Reut
- C 161(?) Mălușteni Recea, jud. Vaslui, RO (Monah – Cucuș 1985, 116 no. 636): r. Recea
- C 162 Dragosloveni, jud. Vrancea, RO (ibid. 90 no. 363): r. Râmna ?
- C 163 Dumbrăveni, jud. Vrancea, RO (ibid. 92 no. 380): r. Râmnia ?
- C 164 Slobozia–Hănești-Râpa Turcului, jud. Botoșani, RO (Monah – Cucuș 1985, 147 no. 952): r. Râpa Turcului
- C 165 Siliște, jud. Vaslui, RO (ibid. 144 no. 930): r. Sacovăț
- \*C 165a Vladimirovka: cf. A 6: r. Sinjuha
- C 166 Bîra, jud. Vaslui, RO (Monah – Cucuș 1985, 62 no. 95): r. Siret
- C 167 Brad-Cetățuia, jud. Bacău, RO (ibid. 68 f. no. 155): r. Siret
- C 168 Butea-La Lutărie, jud. Iași, RO (Popovici 2000, 109 no. 10.1.1): r. Siret
- C 168a Buznea, jud. Iași, RO (Monah – Cucuș 1985, 72 no. 192): r. Siret
- C 169(?) Ciorani-Fântâna de Câmp, jud. Vrancea, RO (Monah – Cucuș 1985, 75 no. 224): r. Siret
- C 170 Crivești-Dealul Corbului, jud. Iași, RO (ibid. 82 no. 298): r. Siret + r. Bidilița
- C 171 Domnești-Cetățuia, jud. Vrancea, RO (Popovici 2000, 208 no. 41.3.1): r. Siret
- C 172 Gâdini-Pogău, jud. Neamț, RO (Monah – Cucuș 1985, 100 no. 468): r. Siret
- C 173 Hălăucești, jud. Iași, RO (Popovici 2000, 123 no. 33.1.1): r. Siret
- C 174 Mircești, jud. Iași, RO (ibid. 139 no. 44.3.1): r. Siret
- C 175 Nănești-Gorgan, jud. Vrancea, RO (Monah – Cucuș 1985, 122 no. 696): r. Siret
- C 176 *vacat*
- C 177 Rediu-Via Teodorescu, jud. Neamț, RO (Monah – Cucuș 1985, 139 no. 879): r. Siret
- C 178 Sagna, jud. Neamț, RO (Popovici 2000, 176 no. 55.3.1): r. Siret
- C 179 Vasil'kovcy, obl. Ternopol', U (Vinogradova 1972, fig. 1 no. 25): r. Siret
- C 180 *vacat*
- C 181 Stolniceni-Prăjescu, jud. Iași, RO (Popovici 2000, 144 no. 70.1.2): r. Siret
- C 182 Krutoborodincy, obl. Hmel'nickij, U (Vinogradova 1972, fig. 1 no. 21): r. Smotrič
- C 183 Bil'če-Sad, obl. Ternopol', U (ibid. no. 23): r. Strypa
- C 184 Vygnanka, obl. Ternopol', U (ibid. no. 24): r. Strypa
- C 185 Frumoasa, jud. Bacău, RO (Monah – Cucuș 1985, 96 no. 428): r. Tazlău
- C 186 Râpa Morii, jud. Bacău, RO (Popovici 51 no. 43.5.1): r. Tazlău Sărat
- \*C 187 Poduri-Dealul Ghindaru: cf. B 51: r. Tazlău Sărat
- C 188(?) Valea Arinilor-Rîpa Morii, jud. Bacău, RO (Monah – Cucuș 1985, 160 no. 1090): r. Tazlău Sărat
- C 189 Mărgineni-Cetățuia, jud. Bacău, RO (Monah – Cucuș 1985, 117 no. 639; Popovici 2000, 52/46.4.3): r. Trebeș + r. Cîrligata
- C 190 Gheorghiu-Dej-Malu, jud. Bacău, RO (Monah – Cucuș 1985, 98 no. 441): r. Trotuș + r. Cașin
- C 191 Gura Văii-Siliște, jud. Bacău, RO (ibid. 102 no. 484): r. Trotuș
- C 192 Onești-La Cetățuia, jud. Bacău, RO (Popovici 2000, 53 no. 52.2.1): r. Trotuș
- C 193 Siliște, jud. Bacău, RO (ibid. 50 no. 33.3.2): r. Trotuș
- C 194 Vermești, jud. Bacău, RO (Monah – Cucuș 1985, 163 no. 1116): r. Trotuș
- C 195 Podu Pietriș, jud. Vaslui, RO (Monah – Cucuș 1985, 131 no. 793): r. Tutova
- C 196 Semenea-W of village, jud. Vaslui, RO (Monah – Cucuș 1985, 144 no. 924): r. Tutova
- C 197 Dumeni, jud. Botoșani, RO (ibid. 92 no. 384): Valea Sfîncii + creek
- C 198 Kudrincy, obl. Ternopol, U (Passek 1949, 53.55.– Passek 1961, 103.183.–

- Popovici 2000, 247 no. 24.2.13.1): r. Zbruč  
 C 199 Kadievcy-Bavki, obl. Kamenec Podolsk, U (Passek 1949, 46.53.55.117;  
 Passek 1961, 103.183; Ellis 1984, 132 Map 4; Popovici 2000, 244 no. 8.12.1): r. Žvanec

#### Catalogue D: sites of uncertain date

- D 1 Babanka, U (Šiškin 1973, 36 fig. 1 no. 4): r. Babanka  
 D 2 Holboca-Cantonul CFR 282, jud. Iași, RO (Monah – Cucuș 1985, 106 no. 531): r. Bahlui  
 D 3 Iași-Dealul Plevnei, jud. Iași, RO (ibid. 109 no. 555): r. Bahlui  
 D 4 Bobulești, jud. Botoșani, RO (ibid. 64 no. 116): r. Bașeu  
 D 5(?) Havârna-Țarna’n Deal, jud. Botoșani, RO (ibid. 102 no. 492): r. Bașeu  
 D 6 Oncești-Poarta țarinei, jud. Bacău, RO (ibid. 125 no. 733): r. Berheciu  
 D 7 Băcești-Capul Dealului, jud. Vaslui, RO (ibid. 57 no. 42): r. Bîrlad

As to the river Dnestr/Nistru: if only direct adjacency to rivers is considered, there results the following list:

- D 8 Ataki, obl. Černovcy/Cernăuți, U (Passek 1961, 24 fig. 1: no 7): r. Dnestr  
 D 9 Ataki-Stinka (ibid.: no. 8): r. Dnestr  
 D 10 Babin-Jama, obl. Černovcy, U (ibid.: no. 52): r. Dnestr  
 D 11 Berkova gora-Motuz, obl. Černovcy, U (ibid. no. 23): r. Dnestr  
 D 12 Bernova-Krinički, obl. Černovcy, U (ibid. no. 24): r. Dnestr  
 D 13 Bernova-Luka (ibid. no. 25): r. Dnestr  
 D 14 Bernova-Soloncy (ibid. no. 26): r. Dnestr  
 D 15 Bilkivcy, raj. Žmerinsk, MO (Žurakovskij 1990, 139): r. Dnestr  
 D 16 Bolšoj Molokiš, obl. Vinnica, U (Passek 1961, 28 fig. 2 no. 31): r. Dnestr  
 D 17 Braga-Darabani, raj. Hotin, MO (Passek 1961, 24 fig. 1 no. 10): r. Dnestr  
 D 18 Bud’ki, raj. Žmerinsk, MO (Žurakovsky 1990, 139): r. Dnestr  
 D 19 Gruševcy-Čišma, obl. Černovcy, U (Passek 1961, fig. 1 no. 49): r. Dnestr  
 D 20 Kaplievka-Rjaboj jar, obl. Černovcy, U (ibid. no. 15): r. Dnestr  
 D 21 Komarovo-Popovo pole, obl. Černovcy, U (ibid. no. 69): r. Dnestr  
 D 22 Komarovo-Strinka (ibid. no. 72): r. Dnestr  
 D 23 Konovka-Popileva krinica, obl. Černovcy, U (ibid. no. 38): r. Dnestr  
 D 24 Konovka-Valki (ibid. no. 34): r. Dnestr  
 D 25 Krinički-Nad Dnestrom, obl. Černovcy, U (ibid. no. 27): r. Dnestr  
 D 26 Kulesovka-Livanevka, obl. Černovcy, U (ibid. no. 106): r. Dnestr  
 D 27 Laba-Pod lesom, obl. Černovcy, U (ibid. no. 35): r. Dnestr  
 D 28 Lopatovo-Šibutincy, obl. Černovcy, U (ibid. no. 100): r. Dnestr  
 D 29 Luka-Vovky, obl. Černovcy, U (ibid. no. 28): r. Dnestr  
 D 30 Makar’evka, obl. Černovcy, U (ibid. no. 43): r. Dnestr  
 D 31 Nagorjane-Dunaek, obl. Černovcy, U (Passek 1961, fig. 1 no. 47): r. Dnestr  
 D 32 Oževo-Pasieško, obl. Černovcy, U (ibid. no. 114): r. Dnestr  
 D 33 Oževo-Ščov (ibid. no. 115): r. Dnestr  
 D 34 Perebykovcy, obl. Černovcy, U (Passek 1961, fig. 1 no. 1; Passek 1969, 16): r. Dnestr  
 D 35–36 Popovo pole-Krinički I-II, obl. Černovcy, U (Passek 1961, fig. 1 no. 70-71): r. Dnestr  
 D 37 Rajky, raj. Ilinești, MO (Passek 1961, 16): r. Dnestr  
 D 38 Raspopincy-Kaplievka, obl. Černovcy, U (Passek 1961, fig. 1 no. 123): r. Dnestr  
 D 39 Semenov-Zelenča, obl. Černovcy, U (Passek 1961, 15): r. Dnestr  
 D 40 Solončeny I, obl. Florești (?), U (ibid. 28 fig. 2 no. 29): r. Dnestr  
 D 41 Valki-Gamarija, obl. Černovcy, U (Passek 1961, fig. 1 no. 37): r. Dnestr  
 D 42 Valki-Voronovica (ibid. no. 32): r. Dnestr  
 D 43 Zaleščiki, obl. Zastavnjansk, U (Passek 1961, 15): r. Dnestr

If sites following the r. Dnestr at some distance but forming a single file without a hinterland are considered as river-oriented as well, there would result the following supplement:

- D 44 Darabani-Kigroz, obl. Černovcy, U (Passek 1961, fig.1 no. 13): r. Dnestr

D 45	Gederim, obl. Rybnica, MO (ibid. fig. 2 no. 13):	r. Dnestr
D 46	Gordivcy, obl. Černovcy, U (Passek 1961, fig. 1 no. 6): Halep'e: cf. Kolomijščina	r. Dnestr
D 47	Jarkova gora-Dolinka, obl. Černovcy, U (ibid. no. 118):	r. Dnestr
D 48	Jarkova gora-U kladbišča (ibid. no. 119):	r. Dnestr
D 49	Kamenka, obl. Rybnica, U (Passek 1961, 28 fig. 2 no. 34):	r. Dnestr
D 50	Kaplievka-Kamennyj jar, obl. Černovcy, U (ibid. no. 14):	r. Dnestr
D 51	Kazennyj jar, obl. Černovcy, U (ibid. no. 107):	r. Dnestr
D 52	Komarovo-U Dnestra, obl. Černovcy, U (Passek 1961, fig. 1 no. 73):	r. Dnestr
D 53	Korman-Višnevaja, obl. Černovcy, U (ibid. no. 103):	r. Dnestr
D 54(?)	Lalova, obl. Dubossary (?), U (Passek 1961, 28 fig. 2 no. 8):	r. Dnestr
D 55(?)	Lopatna, obl. Dubossary (?), U (ibid. no. 7):	r. Dnestr
D 56	Mateucy/Mateuți II, obl. Florești, MO (ibid. no. 40):	r. Dnestr
D 57	Nagorjane-Handžukov jar, obl. Černovcy, U (ibid. no. 48):	r. Dnestr
D 58	Nagorjane-Plocesja (ibid. no. 47):	r. Dnestr
D 59	Naslavča-Ogorod Bužaka, obl. Černovcy, U (ibid. no. 129; 28 fig. 2 no. 67):	r. Dnestr
D 60	Naslavča-Stinka, (Passek 1961, fig. 1 no. 131):	r. Dnestr
D 61	Neporotovo-Lebada, obl. Černovcy, U (ibid. no. 108):	r. Dnestr
D 62	Oževo-Jarkova gora, obl. Černovcy, U (ibid. no. 117):	r. Dnestr
D 63	Oževo-Centr sela (ibid. no. 116):	r. Dnestr
D 64	Paslaviča-Centr sela, obl. Černovcy, U (ibid. no. 130):	r. Dnestr
D 65	Paslaviča-Didy (ibid. no. 133):	r. Dnestr
D 66	Pečara, obl. Černovcy, U (ibid. no. 122):	r. Dnestr
D 67	<i>vacat</i>	
D 68	Perelog, obl. Černovcy, U (ibid. no. 105):	r. Dnestr
D 69	Popenki, obl. Hotin, U (Passek 1961, 24 fig. 1 no. 10):	r. Dnestr
D 70	Popovo pole-Devičij kamen, obl. Černovcy, U (ibid. no. 59):	r. Dnestr
D 71	Raškov, obl. Černovcy, U (ibid. no. 5; fig. 2 no. 37):	r. Dnestr
D 72	Raspopincy-Nad Levadoj, obl. Černovcy, U (Passek 1961, fig. 1 no. 121):	r. Dnestr
D 73	Raspopincy-Nad močarami (ibid. no. 120):	r. Dnestr
D 74	Repužincy, obl. Černovcy, U (ibid. no. 2):	r. Dnestr
D 75	Ruhotin, obl. Černovcy, U (Passek 1961, fig. 1 no. 3):	r. Dnestr
D 76(?)	Saharna, obl. Rezina (?), U (Passek 1961, 28 fig. 2 no. 15):	r. Dnestr
D 77-78a	Sokol I-III, obl. Černovcy, U (ibid. no. 29–31):	r. Dnestr
D 79	Valki-Ratuša, obl. Černovcy, U (ibid. no. 36):	r. Dnestr
D 80	Vološkove-U ruč'ja, obl. Černovcy, U (ibid. no. 127):	r. Dnestr
D 81	Vološkove-Sabarskij jar (ibid. no. 128):	r. Dnestr
D 82	Vološkove-Vozle cerkvi (ibid. no. 126):	r. Dnestr
D 83	Zaluznjany, U (ibid. no. 11):	r. Dnestr
D 84	Žarby, U (Passek 1961, 28 fig. 2 no. 38):	r. Dnestr
D 85	Žury, U (ibid. no. 9):	r. Dnestr

If no. D 41 – D 88 are included in the group of Dnestr-bound sites it would form the majority of all Tripol'e sites in the Dnestr area.

D 86	Červona, obl. Vinnica, U (Šiškin 1973, 36 fig. 1 no. 222):	r. Gniloj Tikič
D 87	Hrističeve, obl. Vinnica, U (ibid. fig. 1 no. 179):	r. Gniloj Tikič
D 88	Katerinopol', obl. Vinnica, U (ibid. fig. 1 no. 143+166):	r. Gniloj Tikič
D 89	Lotaševe, obl. Vinnica, U (ibid. fig. 1 no. 178):	r. Gniloj Tikič
D 90	Nerubaika, obl. Vinnica, U (ibid. fig. 1 no. 142):	r. Gniloj Tikič
D 91	Pal'čik, obl. Vinnica, U (ibid. fig. 1 no. 133):	r. Gniloj Tikič
D 92	Vatutine, obl. Vinnica, U (ibid. fig. 1 no. 220):	r. Gniloj Tikič
D 93	Zaluznjaka, obl. Vinnica, U (ibid. fig. 1 no. 132):	r. Gniloj Tikič
D 94	Zvenigorodka, obl. Vinnica, U (ibid. fig. 1 no. 113):	r. Gniloj Tikič

D 95	Čorna Kam’janka, obl. Vinnica, U (ibid. fig. 1 no. 116):	r. Gornij Tikič
D 96	Hižnja, obl. Vinnica, U (ibid. fig. 1 no. 105):	r. Gornij Tikič
D 97	Kislin, obl. Vinnica, U (ibid. fig. 1 no. 72):	r. Gornij Tikič
D 98	Krivi Kolina, obl. Vinnica, U (ibid. fig. 1 no. 176):	r. Gornij Tikič
D 100	Kuti, obl. Vinnica, U (ibid. fig. 1 no. 70):	r. Gornij Tikič
D 101	Piščana, obl. Vinnica, U (ibid. fig. 1 no. 174):	r. Gornij Tikič
D 102	Skaleve, obl. Vinnica, U (ibid. fig. 1 no. 172):	r. Gornij Tikič
D 103	Vorone, obl. Vinnica, U (ibid. fig. 1 no. 67):	r. Gornij Tikič
D 104	Horodiștea-Cînepiște, jud. Botoșani, RO (Monah – Cucuș 1985, 107 no. 541):	r. Isnovăț + creek (?)
D 105	Cotu Morii, jud. Iași, RO (ibid. 80 no. 281):	r. Jijia
D 106(?)	Dângeni-Dealul Viei, jud. Botoșani (ibid. 87 no. 339):	r. Jijia
D 107	Glăvănești Vechi, jud. Iași, RO (Ellis 1984, 132 Map 14; Monah – Cucuș 1985, 100 no. 472):	r. Jijia
D 108	Trușești-Vatra satului II, jud. Botoșani, RO (ibid. 157 no. 1052):	r. Jijia
D 109(?)	Ungureni-Imașul Ciulienilor, jud. Botoșani, RO (ibid. 159 no. 1082):	r. Jijia
D 110	Ivan’ki, U (Gusev 1990, 129):	r. Južnij Bug
D 111	Kliščev, obl. Vinnica, U (Zaec 1974, 181 fig. 1; Zaec 1990, 69.-Gusev 1990, 129):	r. Ju. Bug
D 112	Krasnen’koe, ? (Gusev 1990, 129):	island in r. Ju. Bug
D 113	Mizjavs’ki Hutori, obl. Vinnica, U (Žurakovskij 1990, 139):	r. Ju. Bug
D 114	Nagornoe, U (Tsvek 1996 b, 147):	lake Kagul
D 115	Kočubeivka, obl. Vinnica, U (Šiškin 1973, 36 fig. 1 no. 27):	r. Kamenka
D 116	Sušktivka, obl. Vinnica, U (ibid. fig. 1 no. 3+55):	r. Kamenka
D 117	Uman’, obl. Vinnica, U (ibid. fig. 1 no. 35):	r. Kamenka + r. Umanka
D 118	Baia-Cetate, jud. Suceava, RO (Monah – Cucuș 1985, 56 no. 34):	r. Moldova
D 119(?)	Bogata-Dealul Colacului, jud. Suceava, RO (ibid. 66 no. 125):	r. Moldova
D 120(?)	Ciumulești, jud. Suceava, RO (ibid. 75 no. 226):	r. Moldova
D 121	Cinghinea-Dealul Urieșelui, jud. Botoșani, RO (ibid. 74 f. no. 221):	r. Prut
D 122	Kostești/Costești, MO (Titov – Markevič 1974, 164; Ellis 1984, 132 Map 14):	r. Prut
D 123	Liveni-La bățci, jud. Botoșani, RO (Monah – Cucuș 1985, 114 no. 605):	r. Prut
D 124	Liveni-La stâncă, jud. Botoșani, RO (ibid. 114 no. 608):	r. Prut + creek
D 125(?)	Liveni-Tarlaua Armaș, RO (ibid. 114 no. 609):	r. Prut
D 126(?)	Liveni-Valea Ciocoiului, RO (ibid. 114 no. 610):	r. Prut + creek
D 127	Mitoc-Pârâul lui Istrati, jud. Botoșani, RO (ibid. 119 no. 665):	r. Prut + creek
D 128	Armășoaia, jud. Vaslui, RO (ibid. 56 no. 22):	r. Racova
D 129(?)	Costești-La Dejugați, jud. Vaslui, RO (ibid. 79 no. 273):	r. Racova
D 130	Aleksandreny, MO (Passek 1961, 28 fig. 2 no. 49):	r. Răut/Reut
D 131	Gura-Kamenka I, MO (ibid. fig. 2 no. 53):	r. Răut/Reut
D 132	Markuleșty/Mărculești II, MO (ibid. fig. 2 no. 50):	r. Răut/Reut
D 133	Markuleșty/Mărculești I, MO (ibid. fig. 2 no. 55):	r. Răut/Reut
D 134	Gura-Kamenka II, MO (ibid. fig. 2 no. 54):	r. Răut/Reut
D 135–136	Žmerinka I, II, (Žurakovskij 1990, 139):	r. Riv
D 137	Pavoloči, obl. Žitomir, U (Makarevič 1952):	r. Rostavica
D 138(?)	Bucecea-La șipotele, jud. Botoșani, RO (Monah – Cucuș 1985, 70 no. 171):	r. Siret
D 139	Ionașeni-La temelii, jud. Botoșani, RO (ibid. 110 no. 575):	r. Siret + r. Sirețel
D 140(?)	Pașcani-La fîntînele, jud. Iași, RO (ibid. 127 no. 748):	r. Siret
D 141	Semeniv-Zelenče, raj. Ternopil’, MO (Sudakov 1952):	r. Siret + r. Gnizna
D 142(?)	Draxini-Bârlădeni, jud. Botoșani, RO (Monah – Cucuș 1985, 90 no. 364):	r. Sitna
D 143	Draxini-Valea Bisericii, RO (ibid. 90 no. 365):	r. Sitna + creek
D 144	Čičirkozivka, obl. Vinnica, U (Šiškin 1973, 36 fig. 1 no. 232):	r. Špola
D 145	Kapustine, obl. Vinnica, U (ibid. fig. 1 no. 193):	r. Špola
D 146	Čečel’nik, U (Kosalivskij 1990, 202 fig. 1):	r. Strumok + r. Savlanka

D 147(?) Soveja-SE of village, jud. Vrancea, RO (Monah – Cucuș 1985, 147 no. 962):	r. Sușița
D 148(?) Slobozia-Chichilău, jud. Bacău, RO (ibid. 145 no. 941):	r. Tazlău + r. Trotuș
D 149(?) Tazlău-La Coborâș, jud. Neamț, RO (ibid. 152 no. 1014):	r. Tazlău
D 150(?) Văleni-Atanasiu, jud. Vrancea, RO (ibid. 163 no. 1114):	r. Trotuș
D 150(?) Văleni-Gorgan, jud. Vrancea, RO (ibid. 163 no. 1113):	r. Trotuș
D 152 Kal'niboloto, obl. Vinnica, U (Šiškin 1973, 36 fig. 1 no. 149):	r. Velikij Vis
D 153 Gnilen', obl. Vinnica, U (Šiškin 1973, 36 fig. 1 no. 229):	r. Vil'sanka
D 154(?) Volovăț-La Siliște, jud. Suceava, RO (ibid. 165 no. 1138):	r. Volovăț
D 155 Zalužnoe, U (Gusev 1990, 129):	r. Zgar

### Catalogue E: Late Cucuteni and Late Tripol'e sites on or near rivers

Kurgan and flat grave *cemeteries* are cited in *italics*.

*E 1 Dobrovody, U: cf. A 1	r. Babanka (?)
E 2 Kasenovka, raj. Babanovo, MO (Passek 1949, 127):	r. Babanka
*E 3 Bălțați, RO: cf. C 1	r. Bahlui
*E 4 Bălțați-Confluența, RO: cf. C 2	r. Bahlui + creek
*E 5 Bârlești-La moară, RO: cf. C 4	r. Bahlui
*E 6 Belcești, RO: cf. C 3	r. Bahlui
E 7(?) Brătuleni-Dealul Holm, jud. Iași, RO (Monah – Cucuș 1985, 69 no. 164):	r. Bahlui
*E 8 Erbiceni, jud. Iași, RO: cf. C 9	r. Bahlui
*E 9 Iași, RO: cf. C 9	r. Bahlui
*E 10 Iași-Curtea Domnească: cf. C 12	r. Bahlui
*E 11 Lețcani: cf. C 14	r. Bahlui
E 12 Lețcani-Iazul Bulgării, jud. Iași, RO (Monah – Cucuș 1985, 113 no. 591):	r. Bahlui
*E 14 Lețcani-La Damian, RO: cf. C 15	r. Bahlui
E 13 Lețcani-La nisipărie, RO (ibid. 113 no. 592):	r. Bahlui
*E 15 Lețcani-Vatra satului, RO: cf. C 17	r. Bahlui
E 16(?) Podu Iloaiei-Siliște, jud. Iași, RO (Monah – Cucuș 1985, 131 no. 792):	r. Bahlui
E 17 Sârca-Cantonul CFR 40, jud. Iași, RO (Monah – Cucuș 1985, 145 no. 937):	r. Bahlui
*E 18 Spinoasa, RO: cf. C 21	r. Bahlui
*E 19 Ulmi-La Odoaie, RO: cf. C 22	r. Bahlui
*E 20 Bălțați-Cantonul CFR, RO: cf. C 23	r. Bahluiet
*E 21 Bălțați-Livada I.A.S., RO: cf. C 24	r. Bahluiet
E 22 Belcești-Dealul Huculei, jud. Iași, RO (Monah – Cucuș 1985, 60 no. 74):	r. Bahluiet + creek
*E 23 La Iaz, RO: cf. C 25	r. Bahluiet
E 23a Războieni-Cantonul CFR 28, jud. Iași, RO (Monah – Cucuș 1985, 138 no. 865):	r. Bahluiet
E 24 Sârca-La Lutărie, jud. Iași, RO (Monah – Cucuș 1985, 145 no. 938):	r. Bahluiet
E 25 Hănești-Vatra satului, jud. Botoșani, RO (Monah – Cucuș 1985, 104 no. 503):	r. Bașeu
E 26 Bobulești-La Curte, jud. Botoșani, RO (ibid. 64 no. 114)	r. Bașeu
E 27 Slobozia-Hănești-Apropiere de Troian, jud. Botoșani, RO (ibid. 146 no. 952):	r. Bașeu
E 28 Ștefănești-Dealul Boboc, jud. Botoșani, RO (ibid. 150 no. 1001):	r. Bașeu
E 29 Bârlad, jud. Vaslui [?] (ibid. 62 no. 96):	r. Bîrlad
E 30(?) Costișa-Dealul Moenii, jud. Neamț, RO (Passek 1949, 117.155): cf. C 35:	r. Bistrița
*E 31 Brad-Cetățuia, RO: cf. B 2, C 37:	r. Bistrița
*E 32 Piatra Neamț, jud. Neamț, RO: cf. B 1	r. Bistrița
E 33 Piatra Neamț-Văleni, RO (Cucuș 1999, 186/67):	r. Bistrița
E 34 Piatra Șoimului, jud. Neamț, RO (Monah – Cucuș 1985, 181 no. 40):	r. Bistrița + creek
*E 35 Văleni-Cetățuia, RO: cf. C 43	former island in r. Bistrița
E 36 Văleni-La Humărie (Monah – Cucuș 1985, 162 no. 1111):	r. Bistrița
E 37 Viișoara, jud. Neamț, RO (ibid. 186 no. 68):	r. Bistrița
E 38 <i>Ilinka</i> , obl. Odessa, U (Dergačev 1991, 77 no. 65):	Black Sea, Kujalnišč bay

- E 39 *Košary*, obl. Odessa, U (ibid. 77 no. 66): Black Sea + r. Tiligul’
- E 40 *Novoalekseevka*, obl. Herson, U (ibid. 81 no. 83): Black Sea
- E 41 *Semenovka*, obl. Odessa, U (ibid. 57 no. 52): Black Sea + r. Dnestr
- E 42 *Usatovo*, city of Odessa, U (Passek 1961, 186 fig. 51 no. 7; Dergačev 2000, 72 no. 64): Black Sea, Hadžibej bay
- E 43 *Ordžonikidze*, obl. Dnepropetrovsk, U (Dergačev 1991, 80 no. 79) r. Buzuluk
- E 44 *Vânători-Dealul Rufeni*, jud. Iași, RO (Monah – Cucuș 1985, 164 no. 1126): r. Căcaina + creek
- E 45 *Baiv*, obl. Luck, U (Jastrzebski 1989, 116 no. 1): r. Čarnoguzka
- E 46 *Hirka Polonka*, obl. Luck, U (ibid. 116 f. no. 2): r. Čarnoguzka
- E 47–48 *Holušiv I–III*, obl. Luck, U (ibid. 117 f. no. 4–6): r. Čarnoguzka
- E 49 *Horodok*, obl. Luck, U (ibid. 117 no. 3): r. Čarnoguzka
- E 50 *Koršoviec I*, obl. Luck, U (ibid. 118 no. 7): r. Čarnoguzka
- E 51 *Novoslav*, obl. Luck, U (ibid. 119 no. 10): r. Čarnoguzka
- E 52 *Bodeștii de Jos*, jud. Neamț, RO (Cucuș 1999, 175 no. 6): r. Cracău
- E 53 *Căciulești*, jud. Neamț, RO (Monah – Cucuș 1985, 72 no. 199): r. Cracău
- E 54 *Girov*, jud. Neamț, RO (ibid. 178 no. 21): r. Cracău
- E 55 *Girov-Dochia*, jud. Neamț, RO (ibid. 88 no. 347; Cucuș 1999, 178 no. 18): r. Cracău
- E 56 *vacat*
- \*E 57 *Girov-Manioaia*, RO: cf. C 50 r. Cracău
- E 58 *Belozerka*, obl. Herson, U (Passek 1949, 201; Passek 1961, 140.- Dergačev 1991, 81 no. 82): r. Dnepr, delta of
- E 59 *Kazaroviči*, obl. Kiev, U (Kruc 1977, 12): r. Dnepr
- E 60 *Lesniki I*, obl. Kiev, U (ibid. 78): r. Dnepr
- E 61 *Ljubimovka*, obl. Herson, U (Dergačev 1991, 81 no. 81): r. Dnepr
- E 62–63 *Podgorcy II+III*, obl. Kiev, U (Passek 1961, 186 fig. 51 no. 68; Kruc 1977, 78): r. Dnepr
- E 64 *Sofievka*, obl. Kiev, U (Passek 1961, 145; 186 fig. 51 no. 61; Dergačev 1991, 95 no. 95): r. Dnepr
- E 65 *Zavalovka*, obl. Kiev, U (ibid. 88 no. 94): r. Dnepr
- E 66 *Životilovka*, obl. Dnepropetrovsk (Passek 1961, 186 fig. 51 no. 27; Dergačev 1991, 79 no. 76): r. Dnepr
- E 67 *Barsuki*, raj. Rybnica/Rîbnița, MO (Passek 1961, 29; 28 fig. 2 no. 41; 186 fig. 51 no. 40): r. Dnestr
- E 68 *Byčok*, raj. Grigoriopol’, MO (Dergačev 1991, 53 no. 40): r. Dnestr
- E 69 *Darabani*, raj. Hotin (?), MO (Passek 1949, 113.116.155; Passek 1961, 24 fig. 1: no. 10): r. Dnestr
- E 70 *Efimovka*, obl. Odessa (ibid. 61 no. 57): r. Dnestr
- E 71 *Gederim*, raj. Rybnica, MO (Passek 1961, 28 fig. 2 no. 13; 186 fig. 51 no. 24): r. Dnestr
- E 72–73 *Golerkany 1-2*, raj. Dubossary, MO (Passek 1961, 28 fig. 2 no. 3; Dergačev 1991, 40 no. 2): r. Dnestr
- E 74 *Gura Baciului*, raj. Novye Aneny/Anenii Noi, MO (Dergačev 1991, 52 no. 37): r. Dnestr
- E 75 *Katerinovka*, raj. Rybnica/Rîbnița, MO (Passek 1961, 29; 28 fig. 2 no. 30; 186 no. 42): r. Dnestr
- E 76 *Kolomijščina I-II*, obl. Kiev, U (Passek 1940; Passek 1949, 55.99.108.131 ff; Passek 1961, 145): r. Dnestr
- E 77 *Lomačincy-Plita*, obl. Černovcy, U (Passek 1961, 142; 186 fig. 51 no. 22): r. Dnestr
- E 78 *Luka-Vrubleveckaja III*, obl. Kamenec-Podol’skij, U (Bibikov 1956, 14 f.): r. Dnestr
- E 79–80 *Majaki 1-2*, obl. Odessa, U (Dergačev 1991, 57 no. 55–56): r. Dnestr
- E 81 *Merešovka/Mereșeuca*, raj. Ocnîța, MO (Passek 1961, 29; 186 fig. 51 no. 17): r. Dnestr
- \*E 82 *Mihajlovka*: cf. C 73 r. Dnestr
- E 83 *Mitkov-Stinka*, obl. Černovcy, U (Passek 1961, fig. 1 no. 4; 186 fig. 51 no. 19): r. Dnestr

- \*E 84 Nezvisko: cf. C 75 r. Dnestr
- E 85 *Parkany*, raj. Slobodzeja, MO (Passek 1961, 140.- Dergačev 1991, 53 no. 41): r. Dnestr
- E 86 Podojma II, raj. Rybnica (?), MO (Passek 1961, 28 fig. 2 no. 35): r. Dnestr
- E 87 Polivanov-jar, obl. Ternopol, U (ibidem 186 fig. 51 no. 25): r. Dnestr
- E 88 Rajky, raj. Ilinești, MO (ibidem 16; fig. 51 no. 49): r. Dnestr
- E 89 *Raskajcy*, raj. Suvorovo, MO (Dergačev 2000, ibid. 55 no. 46): r. Dnestr
- E 90 Repužincy, obl. Černovcy, U (ibid. no. 2; 186 fig. 51 no. 38): r. Dnestr
- E 91 *Speja*, raj. Grigoriopol', MO (ibid. 51 no. 36): r. Dnestr
- E 92 Sokol, obl. Kamenec-Podolsk, U (Passek 1961, 29; 186 fig. 51 no. 43): r. Dnestr
- E 93 Solončeny, raj. Rezin'sk, MO (ibidem fig. 51 no. 23): r. Dnestr
- E 94 *Sukleja*, raj. Slobodzeja, MO (Passek 1949, 112; Passek 1961, 140; Dergačev 2000, 55 no. 45): r. Dnestr
- E 95 Tarasovo, U (Passek 1961, 186 fig. 51 no. 39; Dergačev 2000, 55 no. 42): r. Dnestr
- E 96 *Ternovka*, raj. Slobodzeja, MO (Passek 1961, 186 fig. 51 no. 10; Dergačev 2000, 54 no. 42): r. Dnestr
- E 97 *Tiraspol' 1*, city of, MO (Passek 1961, fig. 51 no. 14; Dergačev 2000, 54 no. 43): r. Dnestr
- E 98 Tudorovo, raj. Olănești, MO (Passek 1961, 30; fig. 51 no. 34): r. Dnestr
- E 99-100 *Usatovo*, city of Odessa, U (Passek 1961, 140.145; Dergačev 2000, ibid. no. 61-63): r. Dnestr
- E 101 Volčinec-Klin, raj. Očnița, MO (Passek 1961, 144; 28 fig. 2 no. 65; 186 fig. 51 no. 16; Dergačev 2000, loc.cit. no. 135): r. Dnestr
- E 102 *Vyhvatincy*, raj. Rybnica, MO (Passek 1961, 146 ff.; 28 fig. 2 no. 12; Dergačev 1978, 4; Markevič 1981, 50; Dergačev 1991, 32 no. 1): r. Dnestr
- E 103 Zvenjačin, obl. Černovcy, U (Passek 1961, 29.143; 186 fig. 51 no. 44): r. Dnestr
- E 104 Košylovcy, obl. Černovcy, U (Hadaczek 1914, 3; Kravec 1955, 135): r. Džurin
- E 105 *Kolodištoe*, obl. Čerkassy, U (Dergačev 1991, 78 no. 67): r. Gniloj Tikič
- E 105a Bilšivci, obl. Galič, U (Tkačuk 2001–2): r. Gnyla Lypa
- E 106 Trojanov, obl. Žitomir, U (Šmaglij 1959, 53; Belanovskaja – Šmaglij 1959, 125; Passek 1961, 186 fig. 51 no. 76): r. Gnilojpat
- \*E 107 Glybočok: cf. A 2 r. Gornij Tikič
- \*E 108 Veselyj Kut: cf. A 3 r. Gornij Tikič
- E 109 Horiv, obl. Luck, U (Jastrebski 1989, 127 f. no. 33): r. Horynia
- E 110 Kurhany, obl. Luck, U (ibid. 128 no. 34): r. Horynia
- E 111 Mohylany, obl. Luck, U (ibid. no. 35): r. Horynia
- E 112 Ostriv, obl. Luck, U (Jastrebski 1989, 127 no. 30): r. Ikva
- E 113 Vijnycy, obl. Luck, U (ibid. no. 32): r. Ikva
- E 114 *Dânceni*, raj. Kutuzov, MO (Dergačev 1981, 35.- id. 1991, 50 no. 34): r. Ișnovăț/Ișnovec
- E 115 *Taraklija 1*, raj. T., MO (ibid. 45 no. 10): r. Jalpug
- E 116 Suškivka, U (Kozlov's'ka 1926, 44 fig; Passek 1949, 121.123.155): r. Jatran'
- \*E 117 Andrieșeni, RO: cf. C 94 r. Jijia
- \*E 118 *vacat*
- \*E 119 Hilișeu-Dealul Urlei, RO: cf. C 99 r. Jijia
- \*E 120 Popricani, RO: cf. C 103 r. Jijia
- \*E 121 Răușeni: cf. C 105 r. Jijia
- E 122(?) Răușeni-La Odoae, jud. Botoșani, RO (Monah – Cucuș 1985, 137 no. 859): r. Jijia
- E 123(?) Rediu Metropoliei-NE of the village, jud. Iași, RO (ibid. 39 no. 882): r. Jijia
- \*E 124 Todireni-Curtea Veche: cf. C 106 r. Jijia + r. Sitna
- \*E 125 Trușești-La Capac: cf. C 107 r. Jijia
- E 126 Trușești-La Grui, jud. Botoșani, RO (Monah – Cucuș 1985, 157 no. 1049): r. Jijia
- \*E 127 Trușești-Movila din Țesul Jijiei: cf. C 109 r. Jijia
- E 128 *Krivoj Rog*, obl. Dnepropetrovsk, U (Passek 1961, 186 fig. 51 no. 5;



- Dergačev 1991, 79 no. 74: r. Jugulec
- E 129 *Širokoe*, obl. Dnepropetrovsk, U (ibid. 79 no. 75): r. Jugulec
- E 130 *Podgorodnoe*, obl. Dnepropetrovsk, U (ibid. 79 no. 77): r. Kil’čen
- E 131 Taraklija 2, raj. T., MO (Dergačev 1991, 45 no. 11): r. Kogyl’nik
- E 132 Mali Dorogostaj, obl. Luck, U (Jastrebski 1989, 126 no. 29): r. Lipa
- E 133 Petropavlovka, obl. Nikolaev, U (Dergačev 1991, 79 no. 72): r. Mertovoda
- E 134 Vitilovka, obl. Černovcy, Ukr. (Passek 1961, 90): r. Novaja Sovica
- E 135(?) Boureni, jud. Iași, RO (Monah – Cucuș 1985, 68 no. 152) r. Moldova
- E 136 Perchiu, jud. Bacău, RO (ibid. 128 no. 760): r. Polocin
- E 137 Bălteni-La Petriș, jud. Iași, RO: (ibid. 59 no. 59): r. Prut
- E 138 Cârniceni-Cimitirul Vechi, jud. Iași, RO (ibid. 76 no. 240): r. Prut
- E 139 *Dumjany*, raj. Ryškany, MO (Dergačev 82 no. 88): r. Prut
- \*E 140 Horia-La Lutărie: cf. C 144 r. Prut
- E 141 Horodiștea, jud. Botoșani, RO (Dumitrescu 1941-44; Passek 1961, 145): r. Prut
- E 142 *Kostești/Costești IX*, raj. Raškany/Rășcani, MO (Markevič 1981, 45; Dergačev 1991, 82 no. 89): r. Prut
- E 143(?) Liveni-La Sărături, jud. Botoșani, RO (Monah – Cucuș 1985, 114 no. 604): r. Prut
- E 144(?) Manoleasa–Prut- Stânca Hrițeni, jud. Botoșani, RO (Monah – Cucuș 1985, 116 no. 625): r. Prut
- \*E 145 Miorcani-Duruitoareșani, RO: cf. C 146 r. Prut + creek
- E 146 Mitoc-Cotul Mic, jud. Botoșani, RO (ibid. 119 no. 661): r. Prut
- E 147 Mitoc-La Pisc (ibid. 119 no. 663): r. Prut
- \*E 148 Mitoc-La lutărie, RO: cf. C 147 r. Prut
- \*E 149 Pererâta-Zamca: cf. C 149 r. Prut
- E 150 Ripiceni-Gura Hârtopolui, jud. Botoșani, RO (Monah – Cucuș 1985, 139 f. no. 883): r. Prut + creek
- E 151 Ripiceni-La Telescu (ibid. 140 no. 885): r. Prut
- E 152 Râșca-Dealul Punar, jud. Botoșani, RO (ibid. 140 no. 888): r. Prut
- E 153 Românești-La Râpa, jud. Botoșani (ibid. 141 no. 894): r. Prut
- E 154 Șipenic, obl. Černovcy, U (Passek 1949, 107.108. [“r. Dnestr”].– Popovici 2000, 243 no. 4.18.1 [„r. Prut”]): r. Prut (or Dnestr ?)
- E 155 Starye Badraži/Bădragii Vechi, raj. Edincy, MO (Markevič 1981, 30): r. Prut
- E 156 Ștefănești-Bulboana lui Stârcea, jud. Botoșani, RO (Monah – Cucuș 1985, 150 no. 1000): r. Prut
- E 157(?) Stânca-Deasupra Scruntarului, jud. Botoșani, RO (ibid. 148 no. 972): r. Prut
- E 158 Trifești-Dealul Curții, jud. Iași, RO (ibid. 156 no. 1044): r. Prut
- E 159 *vacat*
- E 160 Brynzeny-Cyganka/Brînzeni-Țiganca, raj. Edincy, MO (Markevič 1973, 66; Markevič 1981, 33+fig. 41): r. Rakovăț/Rakovec
- E 161 *Gordinești II*, raj. Edincy, MO (ibid. 46.- Dergačev 1973, 90; Dergačev 1991, 82 no. 87): r. Racovăț + r. Drobișta
- E 162 Floreșty/Florești, raj. Florești, MO (Passek 1961, 30 f.): r. Reut/Răut
- \*E 163 Putinești II: cf. B 49 r. Reut/Răut
- \*E 164 Varvarovka VIII: cf. A 4 r. Reut/Răut
- E 165 Varvarovka XV, raj. Florești, MO (Markevič 1972, 49; Markevič 1981, 26): r. Reut/Răut
- E 166 Bilij Kamin’, obl. Vinnica, U (Makarevič 1940, 453): r. Roguzka
- E 167 Siliștea-NV de sat, jud. Neamț, RO (Monah – Cucuș 1985, 144 no. 928): r. Sacovăț
- E 168 Tudor Vladimirescu-Fața Satului, jud. Botoșani, RO (Monah – Cucuș 1985, 157 no. 1054): r. Sărata + creek
- \*E 169 Nebelivka, U: cf. A 5 r. Sinjuha (?)
- \*E 170 Vladimirovka (Passek 1949, 121): cf. A 6, C 165a (Tripol’ e B II): r. Sinjuha
- \*E 171 Butea, RO: cf. C 172 r. Siret
- \*E 172 Gîdintî-Pogan, jud. Neamț, RO: cf. C 176 r. Siret
- E 173(?) Izvoare-Budăi, jud. Neamț, RO (Monah – Cucuș 1985, 111 no. 579): r. Siret

- E 174 Moldoveni-Dealul Gabăra, jud. Neamț, RO (ibid. 121 no. 677): r. Siret  
 E 175 Cviklovcy, obl., U (Movša 1964.– Dergačev 1991, 21): r. Smotrič  
 \*E 176 Majdaneckoe, U: cf. A 7 r. Strumok  
 E 177 Steblivka, obl. Luck, U (ibid. 130 no. 45): r. Stubelka  
 E 178(?) Suceava, jud. Suceava, RO (Monah – Cucuș 1985, 113 no. 601): r. Suceava  
 E 179 Muncelu, jud. Vrancea, RO (ibid. 121 no. 689): r. Șușița  
 E 180 Petricani, jud. Neamț, RO (Cucuș 1999, 181 no. 39): r. Topolița  
 E 181 Urecheni, jud. Neamț, RO (ibid. 185 no. 64): r. Topolița  
 E 182 Mărgineni-Cetățuia, jud. Bacău, RO (ibid. 180 no. 31): r. Trebeș + creek  
 \*E 183 Gheorghiu Dej-Malu, RO: cf. C 195: r. Trotuș + r. Cașin  
 E 184 Gura Văii-Siliște, jud. Bacău, RO (Monah – Cucuș 1985, 102 no. 484;  
 Cucuș 1999, 179 no. 24): r. Trotuș  
 \*E 185 Onești-La Cetățuia, RO: cf. C 197 r. Trotuș  
 \*E 186 Siliște, RO: cf. C 198 r. Trotuș  
 E 187(?)Târgu Ocna-Podei, jud. Bacău, RO (Monah – Cucuș 1985, 153 no. 1027): r. Trotuș  
 E 188 Târgu Trotuș-Tuta, jud. Bacău, RO (Cucuș 1999, 184 f. no. 60): r. Trotuș  
 E 189(?) Viișoara-Piscul Corbului, jud. Bacău, RO (Monah – Cucuș 1985, 163 no. 1118): r. Trotuș  
 E 190 Viișoara II, jud. Neamț, RO (Cucuș 1999, ibid. 186 no. 69): r. Trotuș  
 E 191 *Jasski*, obl. Odessa, U (Dergačev 1991, 57 no. 54): r. Turunčuk  
 E 192 Čaparevka, obl. Kiev, U (Kruc 1977, 12): r. Vita  
 E 193 Buderaž, obl. Luck, U (Jastrebski 1989, 129 no. 40): r. Zbytynka  
 E 194 Novomalin I, obl. Luck, U (ibid. 128 no. 36): r. Zbytynka  
 E 195 Novomalin II (ibid. no. 37): r. Zbytynka  
 E 196 Pivče, obl. Luck, U (ibid. 130 no. 42): r. Zbytynka  
 E 197 Stara Moščanica, obl. Luck, U (ibid. no. 43): r. Zbytynka  
 E 198 Sujmy I, obl. Luck, U (ibid. no. 47): r. Zbytynka  
 E 199 Sujmy II (ibid. no. 48): r. Zbytynka  
 E 200 Sviatye, obl. Luck, U (ibid. 130 no. 46): r. Zbytynka  
 E 201 Kadievcy-Burakovo, obl. Kamenec Podol'sk, U (Passek 1961,  
 186 fig. 51 no. 72): r. Žvanec  
 E 202 Lisove, obl. ?, U (Tsvek 1996 a, 99): “at the confluence of two nameless rivers” (Ellis)  
 \*E 203 Petreny: cf. A 8 “over a river valley” (Ellis)  
 \*E 204 Tal'janky: cf. A 9 “over a river” (Ellis)

#### Catalogue F: settlements at confluences of two rivers

##### *Precucuteni and Tripol'e A*

- \*F 1 Piatra Neamț-Izvoare (B 1): r. Bistrița + r. Cracău  
 \*F 2 Sabatinovka II (B 4): r. Južnij Bug + r. Sinica  
 \*F 3 Bernaševka (B 6): r. Dnestr + r. Žvanec  
 \*F 4(?) Golerkany (B 11): r. Dnestr + r. Kamenka  
 \*F 5 Okopol (B 18): r. Dnestr + r. Zbruč  
 \*F 6 Ungheni (B 47): r. Prut + river

##### *Cucuteni A + A-B / Tripol'e B*

- \*F 7 Piatra Neamț-Izvoare (C 40): r. Bistrița + r. Cracău  
 \*F 8 Duruitoare (C 58): r. Čugur + r. Čugurec  
 \*F 9 Vasilievka (C 87): r. Dnestr + r. Kubolka  
 \*F 10(?) Chiperești (C 95): r. Jijia + r. Bahlui  
 \*F 11 Cristești (C 97): r. Jijia + r. Bahlui  
 \*F 12 Todireni (C 107): r. Jijia + r. Sitna  
 \*F 13(?) Tuțora (C 112): r. Jijia + r. Bahlui  
 \*F 14 Malnaș (C 129): r. Olt + r. Șomoș  
 \*F 15 Crivești (C 170): r. Siret + r. Bidilița

*F 16	Mărgineni (C 189):	r. Trebeș + r. Cîrligata
*F 17	Gheorghiu Dej (C 190):	r. Trotuș + r. Cașin
<b>Sites of uncertain date</b>		
*F 18	Uman’ (D 117):	r. Kamenka + r. Umanka
*F 19	Ionașeni (D 139):	r. Siret + r. Sirețel
*F 20	Semeniv (D 141):	r. Siret + r. Gnizna
*F 21	Čečel’nik (D 146):	r. Strumok + r. Savlanka
*F 22	Slobozia (D 148):	r. Tazlău + r. Trotuș
<b>Cucuteni B / Late Tripol’e</b>		
*F 23	Košary (E 39)	Black Sea + r. Tiligul
*F 24	Semenovka (E 41):	Black Sea + r. Dnestr
*F 25	Semeniv-Zelenče (E 105a):	r. Gnyla Lipa + Siret
*F 26	Todireni (E 124):	r. Jijia + r. Sitna
*F 27	Gordinești (E 161):	r. Rakovăț + r. Drobișta
*F 28	Gheorghiu Dej (E 183):	r. Trebeș + r. Cașin
*F 29	Lisove (E 202):	“Two nameless rivers”

### Catalogue G: confluences of rivers with creeks

#### *Precucuteni/Tripol’e A*

*G 1	Karbuna (B 3):	r. Botna + creek
*G 2	Oževo (B 19):	r. Dnestr + creek

#### *Cucuteni A, A–B/Tripol’e B*

*G 3	Bălțați-Confluența (C 2/E 4):	r. Bahlui + creek
*G 4	Bîrlad (C 30):	r. Bîrlad + creek
*G 5	Piatra Neamț-Bîtea Doamnei (C 38):	r. Bistrița + creek
*G 6	Crivești (C 89a):	r. Găureana + creek
*G 7	Horodiștea-Sub dealul Crucii (C 92):	r. Ișnovăț + creek
*G 8	Văleni-Între Adîncăți (C 120):	r. Moldova + creek
*G 9	Miorcani-Duruitoare (C 142):	r. Prut + creek
*G 10	Românești-La Râpa (C 146/E 147):	r. Prut + creek
*G 11	Dumeni (C 197):	r. Valea Stîncii + creek

#### *Date uncertain*

*G 12	Horodiștea-Cînepiște (D 104):	r. Ișnovăț + creek
*G 13	Liveni-La Stîncă (D 124):	r. Prut + creek
*G 14	Liveni-Valea Ciocoului (D 126):	r. Prut + creek
*G 15	Mitoc-Pîrîul lui Istrati (D 127):	r. Prut + creek
*G 16	Draxini-Valea Bisericii (D 143):	r. Sitna + creek

#### *Cucuteni B/Late Tripol’e*

*G 17	Bălțați-Confluența (E 4/C 2):	r. Bahlui + creek
*G 18	Belcești-Dealul Huculei (E 22):	r. Bahluiet + creek
*G 19	Piatra Șoimului (E 34):	r. Bistrița + creek
*G 20	Vînători-Dealul Rufeni (E 44):	r. Cacaina + creek
*G 21	Mitoc-La lutarie (E 148/C 147):	r. Prut + creek
*G 22	Ripiceni-Gura Hîrtopolului (E 150):	r. Prut + creek
*G 23	Tudor Vladimirescu-Fața satului (E 168):	r. Sărata + creek
*G 24	Mărgineni-Cetățuia (E 182):	r. Trebeș + creek

- Artemenko, I.I. 1963, *Srednedneprovskaja kultura* [The Middle-Dnestr Culture]. *Sov.Arkh.* 1963:2, 12–37.
- Belanovskaja, T.D. – N.M. Šmaglij 1959, *Pozdnetripol'koe poselenie u s. Trojanova, Žitomirskoj oblasti* [The Late Tripol'e settlement at the village T., in the oblast' of Ž.]. *Kratkie soobščeniya Inst. Arh. Kiev* 8, 125–128.
- Bibikov, S.N. 1953, *Poselenie Luka-Vrublevckaja* [The Settlement of L.–V.]. *MIA* 38 (Moskva –Leningrad).
- Bibikov, S.N. 1956, *Tripol'skie poselenija v okrestnostah Luki-Vrublevckoj* [T. settlements in the surroundings of Luka-Vrublevckaja]. *Kratkie soobščeniya Inst. Arh. Kiev* 6, 13–17.
- Bibikov, S.N. 1965, *Hozjajstvenno-ekonomičeskij kompleks razvitogo Tripol'ja* [The economic complex of the development of T.]. *Sov. Arh.* 1965:1, 48–62.
- Boghian, D. 1996, *Unele considerații asupra utilizării litice al comunităților Precucuteni – Cucuteni – Tripolie* [Some considerations on the use of stone in the P.–C.–T. communities], în: *Dumitroaia – Monah (ed.) 1996*, 277–342.
- Bondár, M. 2004, *Der Wagen im spätkupferzeitlichen Europa*. *Arch. Értesítő* 129, 5–34.
- Cârciumaru, M. 2000, *The Physical and Biological Environment at Present and in the Distant Past*, în: *Marinescu-Bîlcu – Bolomey 2000*, 11–20.
- Černyh, E.N. 1978, *Metalurgičeskie provincii i periodizacija epohi rannego metala na teritorii SSSR* [Metallurgical provinces and periodisation of the Early Metals period on the territory of the USSR]. *Sov. Arh.* 1978:4, 53–82.
- Černyš, E.K. 1955: *Rannetripol'skoe poselenija u s. Lenkovcy, černovickoj oblasti* [Early Tripolye settlement at the village L., oblast' Černovcy]. *Kratkie soobščeniya Inst. Arh. Kiev* 4, 136–137.
- Černyš, E.K. 1962, *K istorii naselenija eneolitičeskogo vremeni v srednem Pridnestrov'e* [As to the history of the settlements of Eneolithic times in the middle Dnestr country], în: Anon., *Neolit i eneolit juga evropejskoj časti SSSR*. *MIA* 102, 5–85 (Moskva).
- Černjakov, I.T. 1990, *Poselenija-giganty tripil'skogo kul'turi* [Giant settlements of the Tripol'e culture]. In: *Polevoj Seminar 1990*, 3–7.
- Crîșmaru, A. 1977, *Drăgușeni. Contribuții la o monografie arheologică* [D. Contributions to an archaeological monograph] (Botoșani).
- Cucoș, Ș. 1999, *Faza Cucuteni B în zona subcarpatică a Moldovei* [The phase Cucuteni B in the subcarpathian zone of Moldavia] (Piatra-Neamț).
- Cvek, O.V. 1999, *Struktura shidnotripil'skoi kulturi* [The structure of the eastern Tripolie culture]. *Arheologija* (Kiev) 1999:3, 28–40.
- Dergačev, V.A. 1973, *Pozdnetripol'skie poselenija u s. Gordinești* [A late Tripol'e settlement in the village G.]. *Arheologičeskie issledovanija v Moldavii 1970–1971 gg.*, 90–100 (Kišinev 1973).
- Dergačev, V.A. 1978, *Vyhvatinskij mogil'nik* [The barrow of V.](Kišinev).
- Dergačev, V.A. 1981, *Raskopki v Dančenah i nekotorye izučeniya pamjatnikov pozdnego Tripol'ja i katakombnoj kul'tury* [Excavations at D. and some investigations of Late T. and the Catacomb culture]. *Arheologičeskie issledovanija v Moldavii [1974–1976 gg.]*, 35–45 (Kišinev 1981).
- Dergačev, V.A. 1991, *Bestattungkomplexe der späten Tripolje-Kultur*. *AVA-Mat.* 45 (Mainz).
- Dumitrescu, H. 1941–44, *La station préhistorique de Horodiștea sur le Prut*. *Dacia* 9–10, 127–163.
- Dumitroaia, Gh., D. Monah (ed.) 1996, *Cucuteni aujourd'hui. 110 ans depuis la découverte en 1884 du site éponyme* (Piatra Neamț).
- Dumitrescu, V., et al. 1983: A. Bolomey, F. Mogoșani, *Esquisse d'une préhistoire de la Roumanie* (București).
- Ellis, L. 1984, *The Cucuteni – Tripolye Culture: a Study in Technology and the Origins of Complex Society*. *BAR-Int.Ser.* 217 (Oxford).
- Ellis, L. 1984 (1987), *Population growth, food storage and ceramic manufacturing centers in pre-Bronze Age Europe*. In: *Petrescu-Dîmbovița et al. (ed.) 1984 [1987]*, 177–191.
- Ellis, L. 1996, *Cultural boundaries and human behavior: method, theory and Late Neolithic ceramic production in the Carpathic-Pontic region*, în: *Dumitroaia – Monah (ed.) 1996*, 75–87.
- Ellmers, D. 1984, *Frühmittelalterliche Handelsschiffahrt in Mittel- und Nordeuropa*. *Offa-Bücher* 28 (Neumünster<sup>2</sup>1984).
- Fedorova, R.V. 1962, *Uničtoženie lesa i primitivnoe zemledelie v kamennom veke po sovremennym eksperimentam i pyl'cevym analizam* [The destruction of forest and primitive agriculture in the Stone Age according to present experiments and pollen analysis]. *Sov. Arh.* 1962:1, 253–257.
- Gamčenko, S. 1926, *Sposterežennja nad danimi doslidiv Tripil'skoj kul'turi 1909–1913 rr.* [Observations sur les données de la civilisation Trypilienne], în: *Tripil'ska kultura*, 31–42 [191–192].
- Gheție, B., C.N. Mateesco 1971, *L'emploi des bovins pour la traction pendant la phase Vădastra II (Néolithique moyen)*. *Zephyrus* 20–21, 1970–71, 99–104.
- Godłowska, M. et al. 1979, *Neolit. Prahistoria ziem polskich II* (Warszawa).
- Gusev, S.A. 1990, *Topografija tripol'skih poselenij srednego Pobužja* [The topography of Tripol'e settlements in the Middle Bug area], în: *Polevoj Seminar*, 129–131.

- Hadaczek, K. 1914, *Osada przemysłowa w Koszylowcach z epoki eneolitu* [The industrial settlement K. of the Eneolithic epoch](Lwow).
- Höckmann, O. 1996, *Schiffahrt in der Steinzeit*, in: M. Porumb (Hrsg.), *Omaggio a Dinu Adamesteanu*, 25–60 (Cluj-Napoca).
- Höckmann, O. 2003, *Zu früher Seefahrt in den Meerengen*. *Studia Troica* 13, 133–160.
- Jastrzebski, S. 1989, *Kultura Cucuteni–Trypole i jej osadnictwo na Wyżynie Wołyńskiej* [The C.-T. culture and its settlement pattern in the Volynian hill country] (Lublin).
- Kozlovskaja, V. 1926, *Točki Tripil’skoj kul’turi bilja s. Sušivki na Gumanščini* [Emplacements de la vie de la civilisation Trypillienne près du village Souchkivka à la Humantchina], in: *Tripil’ska kul’tura*, 43–65 [193–194].
- Krasnov, Ju.A. 1971, *Rannee zemledelie i životnovodstvo v lesnoj poloze Vostočnoj Evropy* [Early agriculture and animal husbandry in the forest parts of Eastern Europe]. *MIA* 174 (Moskva – Leningrad).
- Kravec, V.P. 1955, *Izučenie pozdnetripol’skih pamjatnikov v verhnem Podnestrov’e* [Research of Late Tripolye monuments in the Upper Dneestr area]. *Kratkie soobščeniya Inst. Arh. Kiev* 4, 133–135.
- Kruc, V.A. 1977, *Pozdnetripol’skie pam’jatniki srednogo Podneprov’ja* [Late Tripol’e documents of the Middle Dneestr country] (Kiev).
- Kruc, V.A. 1990, *Planirovka poselenija u s. Tal’janki i nekotorye voprosy tripol’skogo domostroitel’stva* [The planning of the settlement in the village Tal’janki and some questions about Tripol’e house architecture], in: *Polevoj Seminar 1990*, 43–47.
- Magura, S. 1926, *Pitannja pobutu na pidstavi tripil’skoj kulturi* [Analyse des faits, basé sur les restes de la civilisation Trypillienne], in: *Tripil’ska kul’tura*, 97–113 [198–200].
- Makarevič, M.L. 1940, *Arheologični doslidi v seli Bilij Kamin’* (Rozkopki 1928 r.) (Compte-rendu des fouilles dans le village de B.K.), in: *Tripil’ska kul’tura 1940*, 453–471.
- Mantu, C.-M. 1998, *Cultura Cucuteni* (Piatra-Neamț).
- Marinescu-Bîlcu, S., A. Bolomey, M. Cârciumaru, A. Muraru 1984, *Ecology, Economic and Behavioral Aspects of the Cucuteni A4 Community at Drăgușeni*. *Dacia N.S.* 28, 41–46.
- Marinescu-Bîlcu, S. – A. Bolomey 2000, *Drăgușeni. A Cucutenian Community* (București – Tübingen).
- Makarevič, M.L. 1952, *Tripil’ske poselenija bilja s. Pavoloči* [The Tripol’e settlement near the village P.]. *Arh. Pam’jatky URSR* IV, 96–103.
- Markevič, V.I. 1972, *Itogi polevyh rabot, provedennyh v 1969 g. Moldavskoj neolitičeskoj ekspedicii* [Results of fieldwork performed in 1969 by the Moldavian Neol. expedition] *Arheologičeskie issledovanija v Moldavii v 1968–1969 gg.*, 49–64 (Kišinev 1972).
- Markevič, V.I. 1973, *Issledovanija Moldavskoj neolitičeskoj ekspedicii v 1970–1971 gg.* [Research by the Moldavian Neolithic expedition in 1970–71], 52–78. *Arheologičeskie issledovanija v Moldavii v 1970–1971 gg.* (Kišinev 1973).
- Markevič, V.I. 1981, *Pozdnetripol’skie plemena Severnoj Moldavii* [Late Tripol’e tribes of northern Moldavia] (Kišinev).
- Masson, V.M. 1990, *Tripol’skoe obščestvo i ego social’no-ekonomičeskie harakteristiki* [Tripol’e society and its social-economic characteristics], in: *Polevoj Seminar 1990*, 8–10.
- Mikič, V.V. 1990, *Rann’otripil’ski poselenija ponad ričkoju Girs’kij Tikič* [Early Tripol’e settlement on the Upper T.], in: *Polevoj Seminar 1990*, 214–218.
- Minns, E.H. 1913, *Scythians and Greeks* (Cambridge).
- Monah, D., Șt. Cucoș 1985, *Așezările culturii Cucuteni din România* [Settlements of Romania’s Cucuteni culture] (Iași).
- Monah, D. 1991, *L’exploitation du sel dans les Carpates Orientales et ses rapports avec la culture Cucuteni – Tripolie*. In: V. Chirica, D. Monah (ed.), *Le Paléolithique et le Néolithique de la Roumanie en contexte européen*, 387–400 (Iași).
- Monah, F. 1992, *Amprunte de plante descoperite în așezări eneolitice din Moldova* [Impressions of plants discovered in eneolithic settlements of M.], *Arh.Mold.* 15, 185–187.
- Monah, D. 2005, *Machete de ambarcațiuni din culturile Precucuteni și Cucuteni* [Boat models from the Precucuteni and Cucuteni cultures], in: V. Spinei, M. Lazarovici, D. Monah (Hrsg.), *Scripta praehistorica. Miscellanea in honorem nonagenarii magistri Mircea Petrescu-Dîmbovița oblata*, 271–294 (Iași).
- Movša, T.G. 1964, *Novoe pozdnetripol’skoe poselenie Cviklovcy v Srednem Podnestrov’e* [The new Late T. settlement C. in the Middle Dneestr country]. *Sov.Arh* 1964:1, 131–145.
- Movša, T.G. 1971, *O severnoj gruppe pozdnetripol’skih pamjatnikov* [As to the monuments of the northern group of Late Tripol’e]. *Sov.Arh.* 1971:1, 31–54.
- Movša, T.G. 1990, *Aktual’nye problemy istorii pozdnetripol’skogo naselenija Dnestrovsko-dneprovskogo meždureč’ja* [Actual problems of the history of the Late Tripol’e settlements in the country between the Dneestr and the Dnepr], in: *Polevoj Seminar*, 169–174.
- Muraru, A. 1984 (1987), *Considérations sur le matériel lithique utilisé par les tribus de la civilisation Cucuteni*, in: *Petrescu-Dîmbovița et al. (ed.) 1984 (1987)*, 193–199.
- Muraru, A. 2000, *A Petroglyphic Survey of the Lithic Material*, in: *Marinescu-Bîlcu, Bolomey 2000*, 59–62.

- Nandris, J.G. 1984 (1987), *Romanian ethnoarchaeology and the emergence and development of Cucuteni in the European context*. In: Petrescu-Dîmbovița et al. (ed.) 1984 (1987), 201–224.
- Nute, G.L. 1966, *The Voyageur* (St. Paul 1931; Repr. 1966).
- Pare, Chr. 2006, *Reallexikon der germanischen Altertumskunde* vol. 33, 51–68, s.v. *Wagen und Wagenbau* (Berlin – New York).
- Passek, T.S. 1940, *Tripil'ske poseleňnja Kolomijščina (Rozkopki 1934–1938 rr.)* [La colonie primitive tripolienne de K. Excavations 1934–1938], in: *Tripil'ska kul'tura 1940*, 9–41.
- Passek, T.S. 1949, *Periodizacija tripol'skih poselenij* [The periodisation of the Tripol'e settlements]. *MIA* 10 (Moskva – Leningrad).
- Passek, T.S. 1958, *Novye otkrytija na territorii SSSR i voprosy pozdneneolitičeskikh kul'tur Dunajsko–Dnestrovskogo meždureč'ja* [New investigations in the territory of the SSSR, and questions about Late Neolithic cultures in the area between the Danube and the Dneestr]. *Sov.Arh.* 1958:1, 28–46.
- Passek, T.S. 1961, *Rannezemledel'českie (tripol'skie) plemena Podnestrov'ja* [Early farmers' (Tripol'e) tribes in the Dneestr country]. *MLA* 84 (Moskva).
- Petrescu-Dîmbovița, M. et al. (ed.) 1984 (1987), *La civilisation de Cucuteni en contexte européen. Session scientifique Iași – Piatra Neamț 1984 (Iași 1987)*.
- Petrescu-Dîmbovița, M. 1992, *Quelques problèmes concernant les établissements de la civilisation de Cucuteni et leurs rapport avec le sud-est de l'Europe*. *Acta Arch. Carpath.* 31, 55–67.
- Petrov, V.P. 1940, *Poselenija v Gorods'ku* (Colonie primitive près de G.), in: *Tripil'ska kul'tura 1940*, 339–379.
- Polevoj Seminar 1990*, [Anon.] *I polevoj seminar. Rannezemledel'českie poselenija-giganty tripol'skoj kultury na Ukraine* [First Field Seminar. Early farmers' giant settlements of the T. culture in the Ukraine] (Tal'janki).
- Popovici, D.N. 2000, *Cultura Cucuteni Faza A. Repertoriul așezărilor (1)* [Repertory of Cucuteni A settlements] (Piatra-Neamț).
- Rassamakin, Ju.Ja. 2004, *Die nordpontische Steppe in der Kupferzeit. Gräber aus der Mitte des 5. Jts. bis zum Ende des 4. Jts. v. Chr.*, Bd. I. *Arch.in Eurasien* 17 (Mainz).
- Rudins'kij, M. Ja. 1961, *Kam'jana Mogila (korpus naskel'nih risunkiv)* [K.M., corpus of the rock engravings] (Kijv).
- Ryndina, N.V., A.V. Engovatova 1990, *Opyt planigrafičeskogo analiza kremnevych orudij tripol'skogo poselenija Drucy I* [Insight gained from the planigraphic analysis of flint tools from the T. settlement D. I], in: *Polevoj Seminar 1990*, 108–112.
- Ryžov, S.N. 1990, *Mikrochronologija tripol'skogo poselenija u s. Tal'janky* [The micro-chronology of the Tripol'e settlement T.], in: *Polevoj Seminar 1990*, 83–90.
- Sergeev, G.P. 1963, *Rannetripol'skij klad u s. Karbuna* [The Early Tripol'e hoard at the village K.]. *Sov.Arh.* 1963:1, 135–151.
- Šiškin, K.V. 1973, *Z praktiki dešifruvanja aerofotoznimikiv u arheologičnyh ciljah* [As to the technique of decyphering air photographs for archaeological purposes]. *Arheologija* (Kiev) 10, 32–41.
- Skakun, N. 1996, *New excavations of a [sic] Eneolithic settlement in the Lower Danube region*, in: Dumitroaia, Monah (ed.) 1996, 141–158.
- Šmaglij, N.M. 1959, *O planirovke pozdnetripol'skih poselenij vostočnoj Vol'ynij* [On the planning of Late Tripolye settlements in eastern Volynia]. *Kratkie soobščeniya Inst.Arh.Kiev* 9, 52–55.
- Šmaglij et al. 1973, Šmaglij, N.M., V.P. Dudkin, K.V. Zin'kovskij, *O kompleksnom izučenii tripol's'kih poselenij* [Complex research of T. settlements]. *Arheologija* (Kiev) 10, 23–31.
- Šmaglij, N.M. 1980, *Krupnye tripol'kie poselenija v meždureč'ja Dnepra i Južnogo Buga* [Round T. settlements in the Dnepr-Southern Bug interfluvium], in: *Pervobytnaja arheologija, poski i nahodniki*, 199–203 (Kijev).
- Šmaglij, N.M., M.Ju. Videjko 1990a, *Krupnye tripol'skie poselenija i problema rannih form urbanizacii* [Large Tripol'e settlements and the problem of early forms of urbanisation], in: *Polevoj Seminar 1990*, 12–16.
- Šmaglij, N.M., M.Ju. Videjko 1990b, *Mikrochronologija poselenija Majdaneckoe* [The micro-chronology of the settlement M.], in: *Polevoj Seminar 1990*, 91–94.
- Šmaglij, N.M., M.Ju. Videjko 1993, *Tripol'skie protogoroda* [T. proto-towns]. *Arheologija Kiev* 3, 52–63.
- Šmaglij, N.M. 1990, *Itogi i perspektivy issledovanija krupnogo tripol'skogo poselenija u s. Majdaneckogo* [Results and perspective research of the round T. settlement at the village of M.], in: *Polevoj Seminar 1990*, 30–34.
- Šmaglij, N.M., M.Ju. Videjko 2001–2, *Majdaneckoe – tripol'skij protogorod* [M. – tripolian proto-town]. *Stratum Plus* 2, 44–136.
- Sudakov, S.A. 1952, *Poselenija tripil'skoj kul'turi bilja s. Semeniv-Zelenče* [A settlement of the Tripol'e culture near the village S.-Z.]. *Arh.Pam'jatky URSR* IV, 104–111.
- Šumova, V.A. 1990, *Rekonstrukcija žiliščno-strojteln'nyh kompleksov tripol'skogo poselenija u s. Vasil'evka na Dnestre* [Reconstruction of house complexes of the T. settlement in the village of V. on the Dneestr], in: *Polevoj Seminar 1990*, 77–79.

- Tkačuk, T.M. 2001–2, *Konec etapa C I i načalo C II tripol'skih kul'tury verhnogo Podnestrov'ja (na materialah poselenija Bil'sivci)* [The end of phase C I and the beginning of C II of T. culture of the Upper Dnestr region (by materials from the settlement B.)]. *Stratum Plus* 2, 196–217.
- Titov, V.S., V.I. Markevič 1974, *Novye dannye o zapadnyh svjazjah pozdnego Tripol'ja* [New data as to western Late T.]. *Sov.Arh* 1974:3, 150–164.
- Tjurina, I.M. 1970, *Neolit verhnego Podneprov'ja* [The Neolith of the Upper Dnepr area]. *Sov.Arh.* 1970:3, 40–52.
- Tripil'ska kultura 1926*, V. Kozlovska (ed.), *Tripil'ska kultura na Ukraini I* [The T. culture in Ukraine] (Kiiv).
- Tripil'ska kultura 1940*: anon., *Tripil'ska kultura I* [The T. culture] (Kiiv).
- Tsvek [= Cvek], E. 1996a, *Structure of the Eastern Tripolye culture*, in: Dumitroaia, Monah (ed.) 1996, 89–113.
- Tsvek, E. 1996 b, *Contacts between the Eneolithic tribes of Europe and Eastern Tripolyan population. ibid.*, 121–130.
- Videjko, M.Ju. 1990, *Žiliščno-hozjajstvennye kompleks poselenija Majdaneckoe i voprosy ih interpretacii* [Domestic-economic complexes of the settlement M. and problems of their interpretation], in: *Polevoj Seminar 1990*, 115–120.
- Vinogradova, N.M. 1972, *Pam'jatniki perehodnogo etapa Tripol'ja BI-BII v Podnestrov'e* [Monuments of the early phase of Tripol'e BI-BII in the Dnestr area]. *Sov.Arh.* 1972:1, 36–56.
- Zaliznjak, L.L. 2004, *Tripillja očima naukovciv i politikiv* [T. in the eyes of scholars and politicians]. *Arheologija Kiev* 2004:3, 95–103.
- Zaec, I.I. 1974, *Tripol'skoe poselenie Kliščev na južnom Buge* [The T. settlement K. on the southern Bug]. *Sov.Arh.* 1974:4, 180–200.
- Zbenovič, V.G. 1980, *Poselenie Bernaševka na Dnestre* [The settlement of B. on Dnestr] (Kiev).
- Zbenovič, V.G. 1990, *K probleme krupnyh tripol'skih poselenij* [As to the problems of the large Tripol'e settlements], in: *Polevoj Seminar 1990*, 10–12.
- Zbenovič, V.G. 1996, *Siedlungen der frühen Tripol'e-Kultur zwischen Dnestr und Südlichem Bug*. Arch.in Eurasien 1 (Espelkamp).
- Zinkovskij, K.V. 1990, *K itogam kompleksnogo issledovanija tripol'skih pamjatnikov* [As to the final outcome of the complex investigations of Tripol'e monuments], in: *Polevoj seminar 1990*, 73–76.
- Žurakovskij, B.S. 1990, *Zabezpečennja vodoju tripil'skih poselen'* [Water supply of the T. settlements], in: *Polevoj Seminar 1990*, 139–140.
- Žurakovskij, B.S – I.I. Zaec 1997, *Zabezpečennja vodoju tripil'skih poselen'* [Water supply of the T. settlements]. *Arheologija* (Kiev) 1997, 135–139.