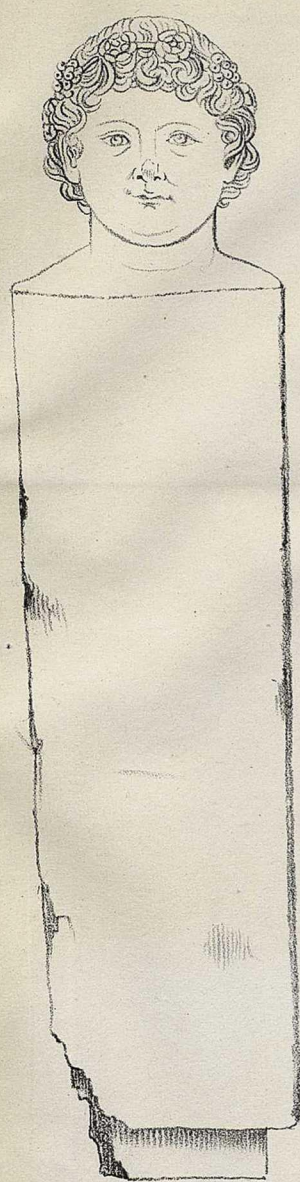




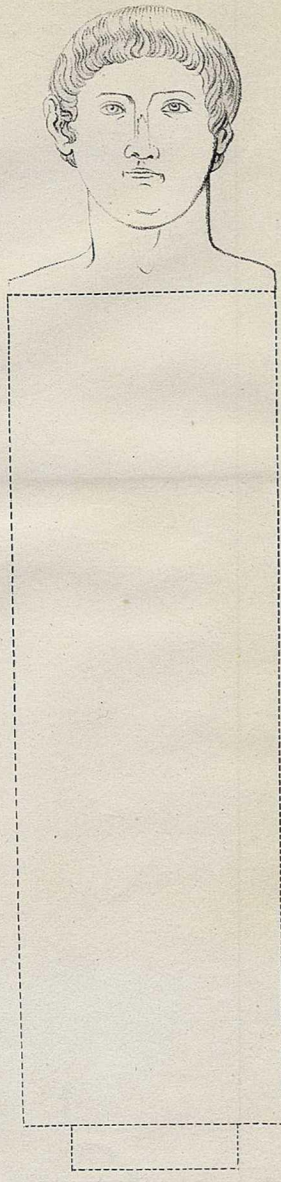
Abb. nach d. nat.

Römisch-celtische Alterthümer im Berner Seeland.

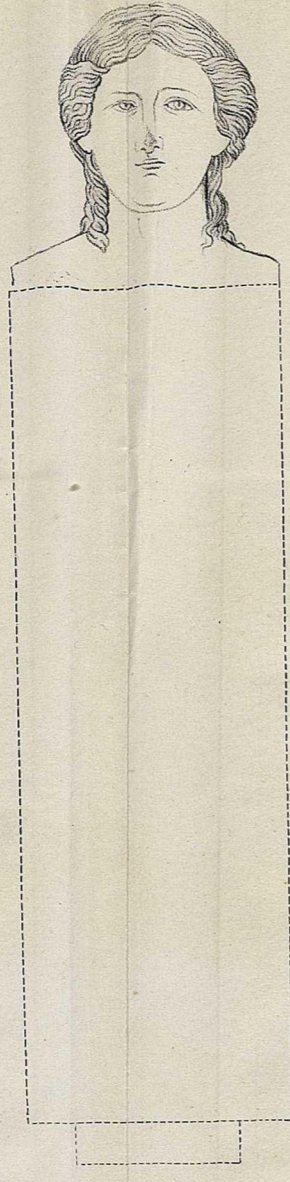
Verh. Inst. d. R. F. W. Univ. u. Henry & Cohen - Bonn.



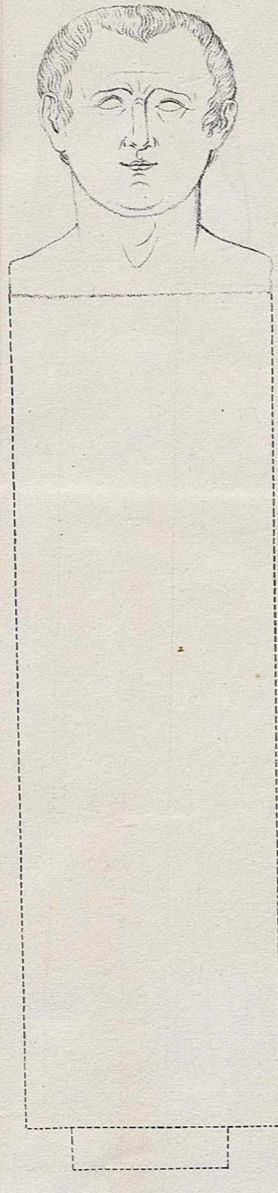
6



4



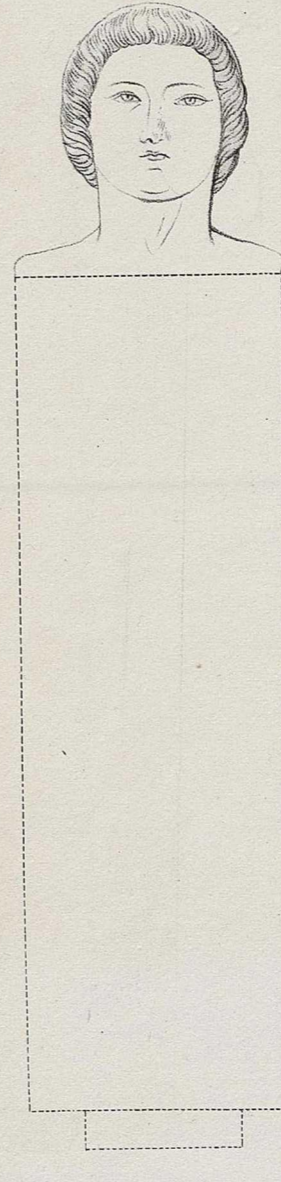
2



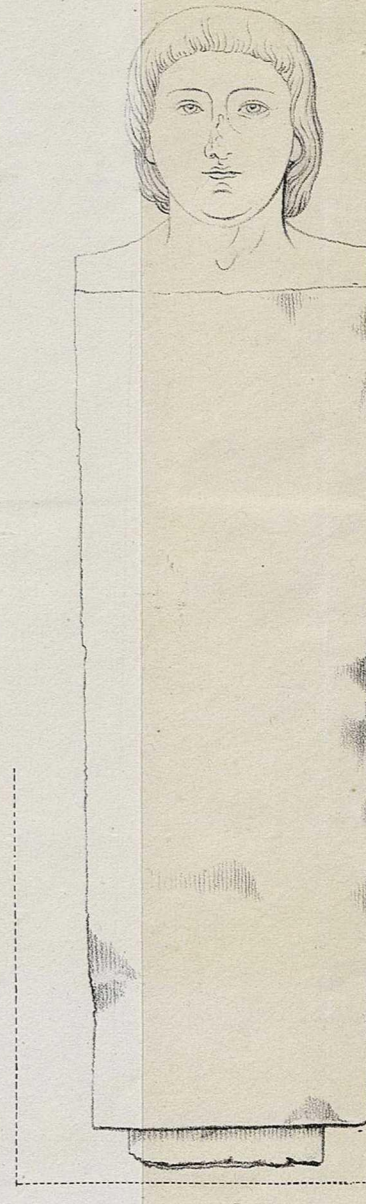
1



3



5



7



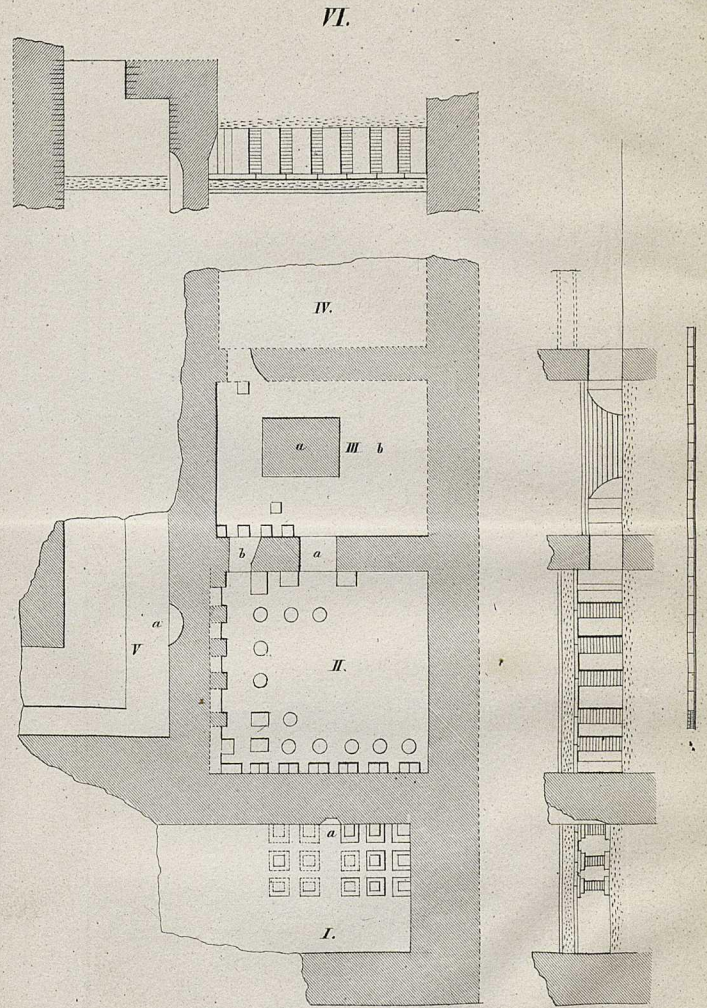
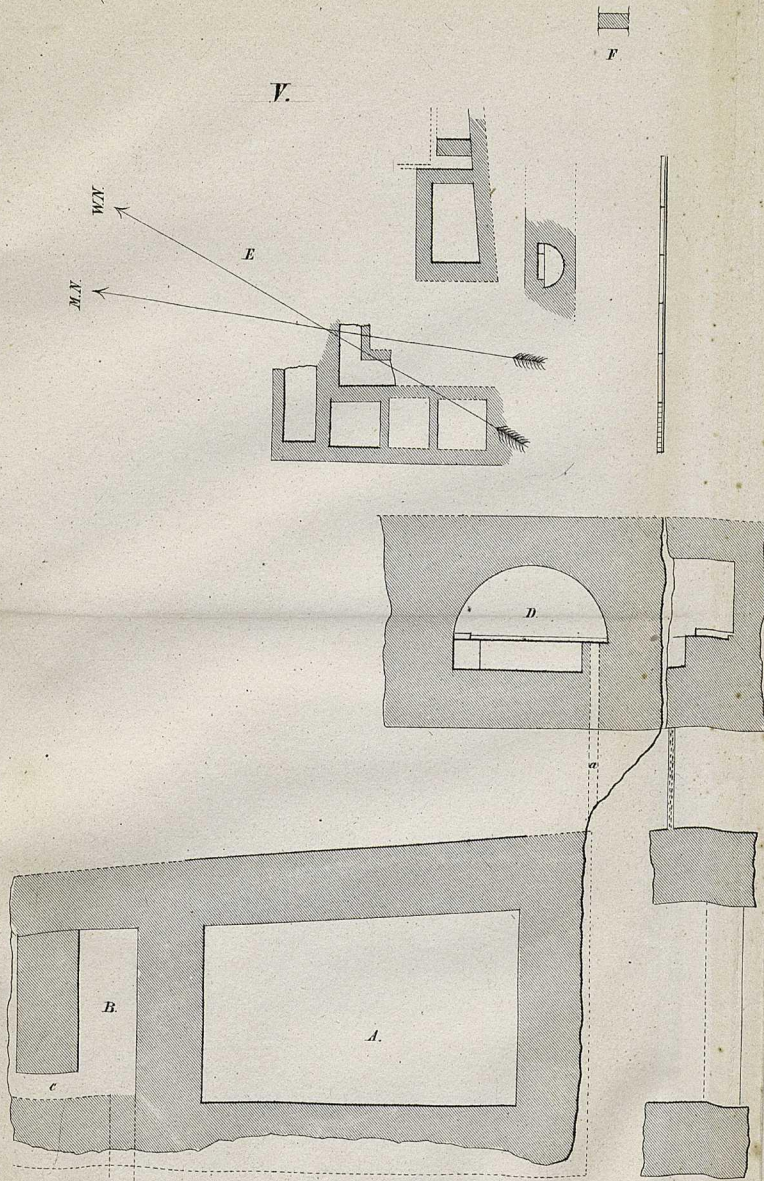
8



9

P. Grimsheimer sc. del.

Die Hermen der Gruft in Wilschbillig.



v. Dechen del. ad. nat.

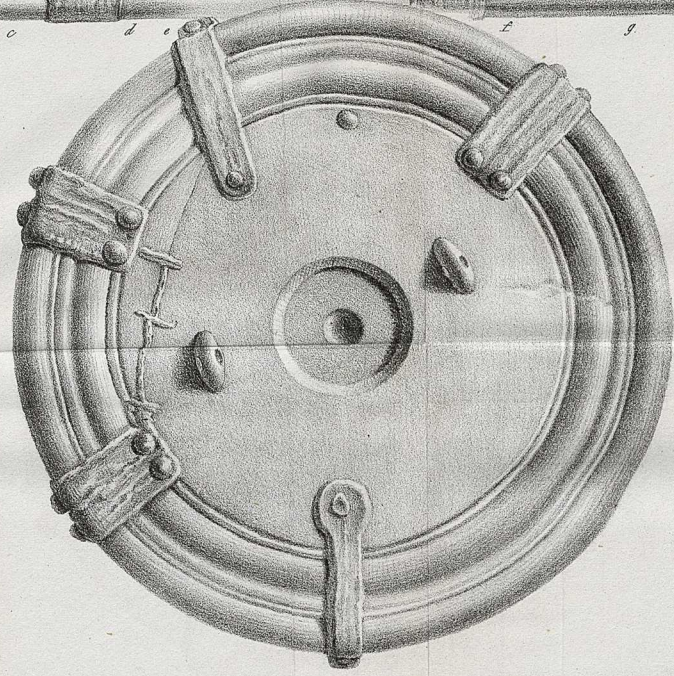
Römische Alterthümer in Bonn.

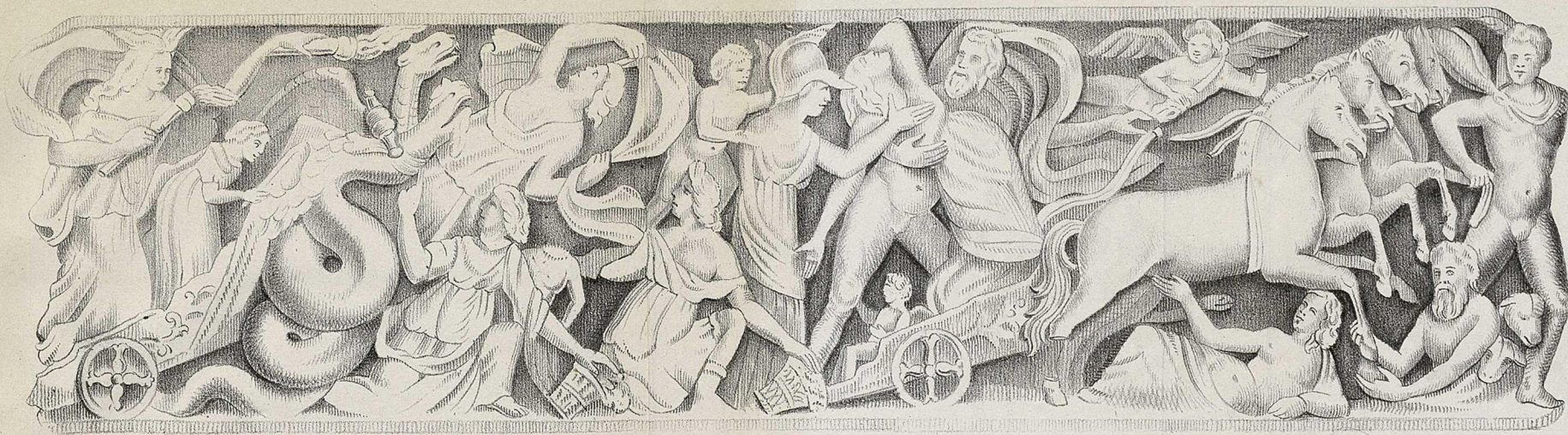
Lith. Inst. d. R. F. W. Duss & Henry & Coher, Bonn.



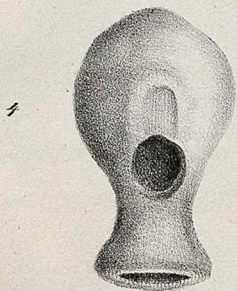
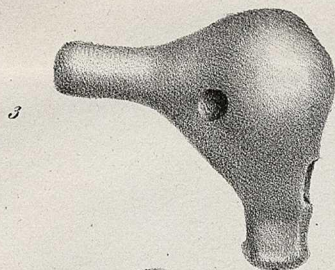
Die Rettung des Zeus.

Achilles auf Sogros.





Schnitz del. cur.



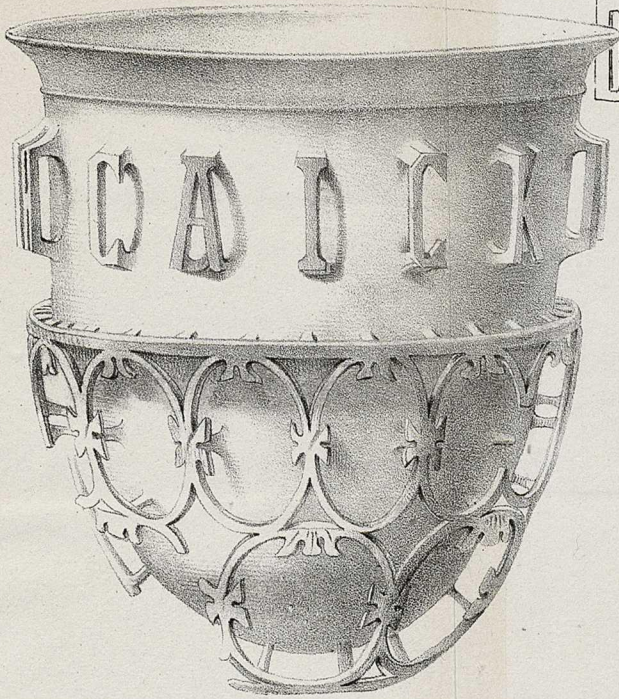
Rh. Fuß.



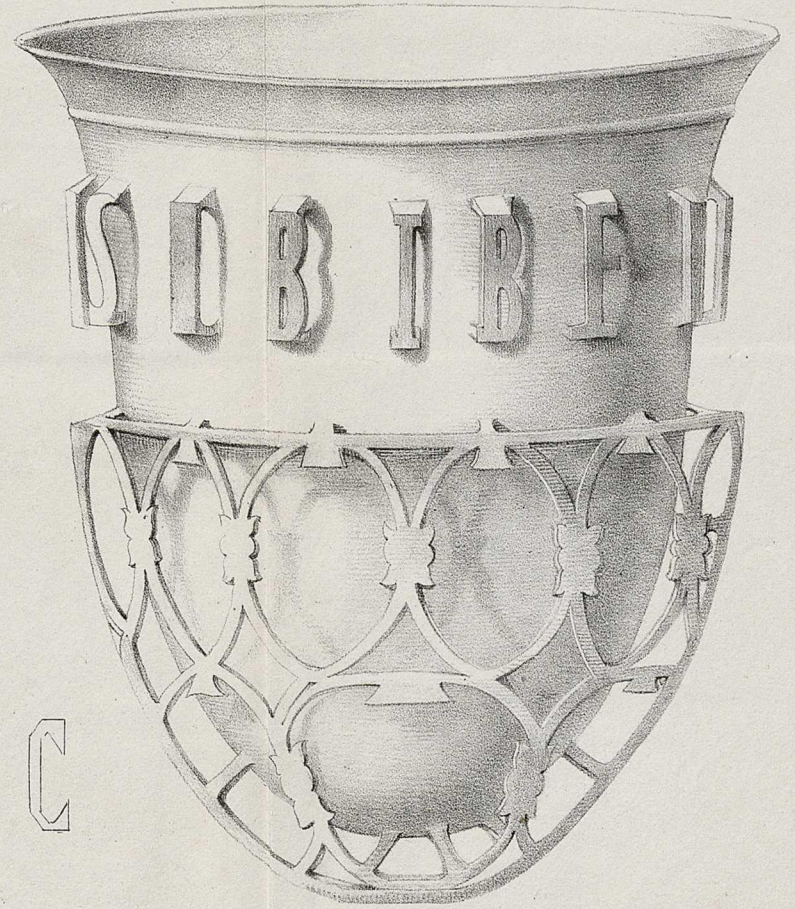
1-2. Der Raub der Proserpina. 3-5. Röm. Alterthümer aus Neufs.

2

BIBELWULTISANNIS



*Bismarck's chalice.*



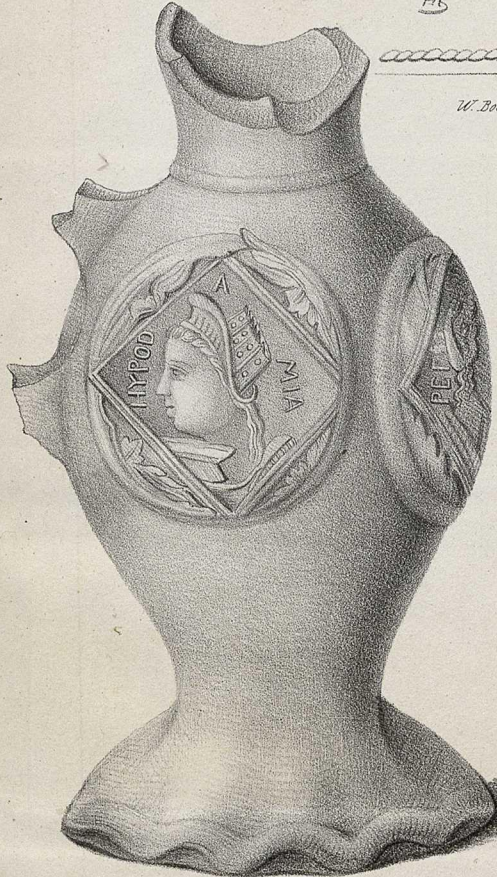
*Eden's chalice.*

WIEZHAICKAUC

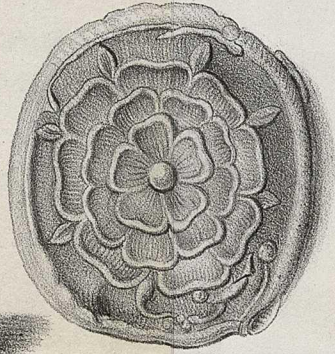
*Vasa diatreta in Köln.*



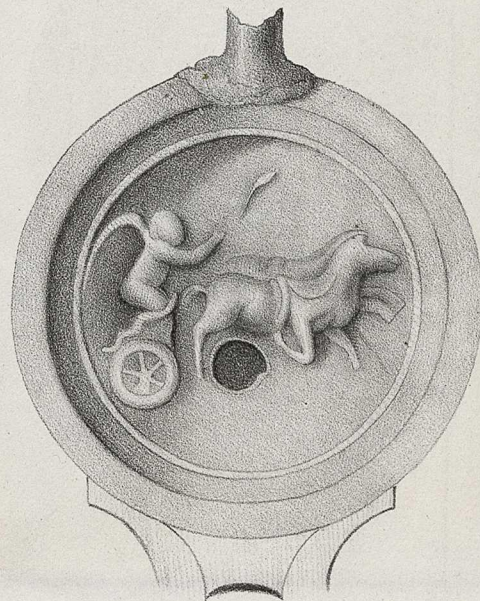
W. Busch del.



R. Hoffmann del.



1-2. Röm. Alterth. aus Kanten.



W. Busch del.

3-5. Alterthümer aus Worms.



R. Hoffmann del.