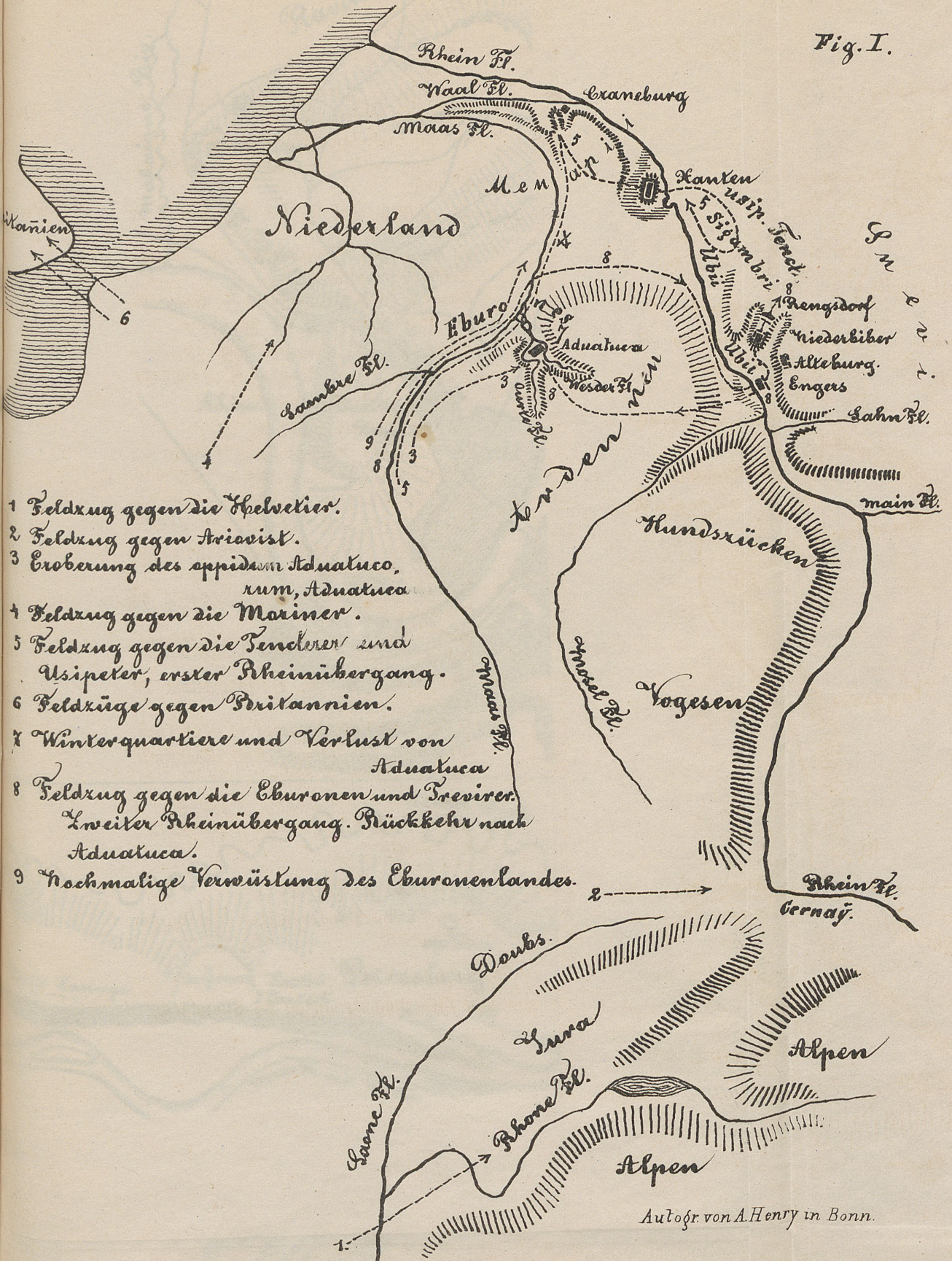


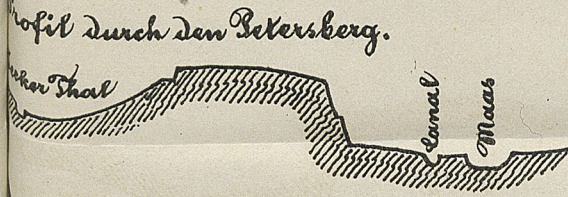
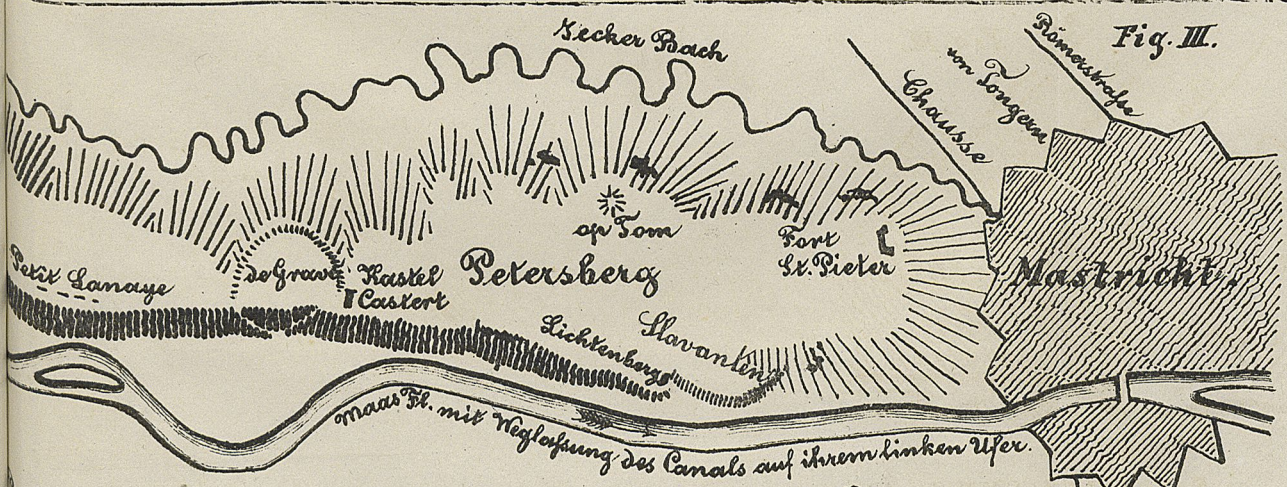
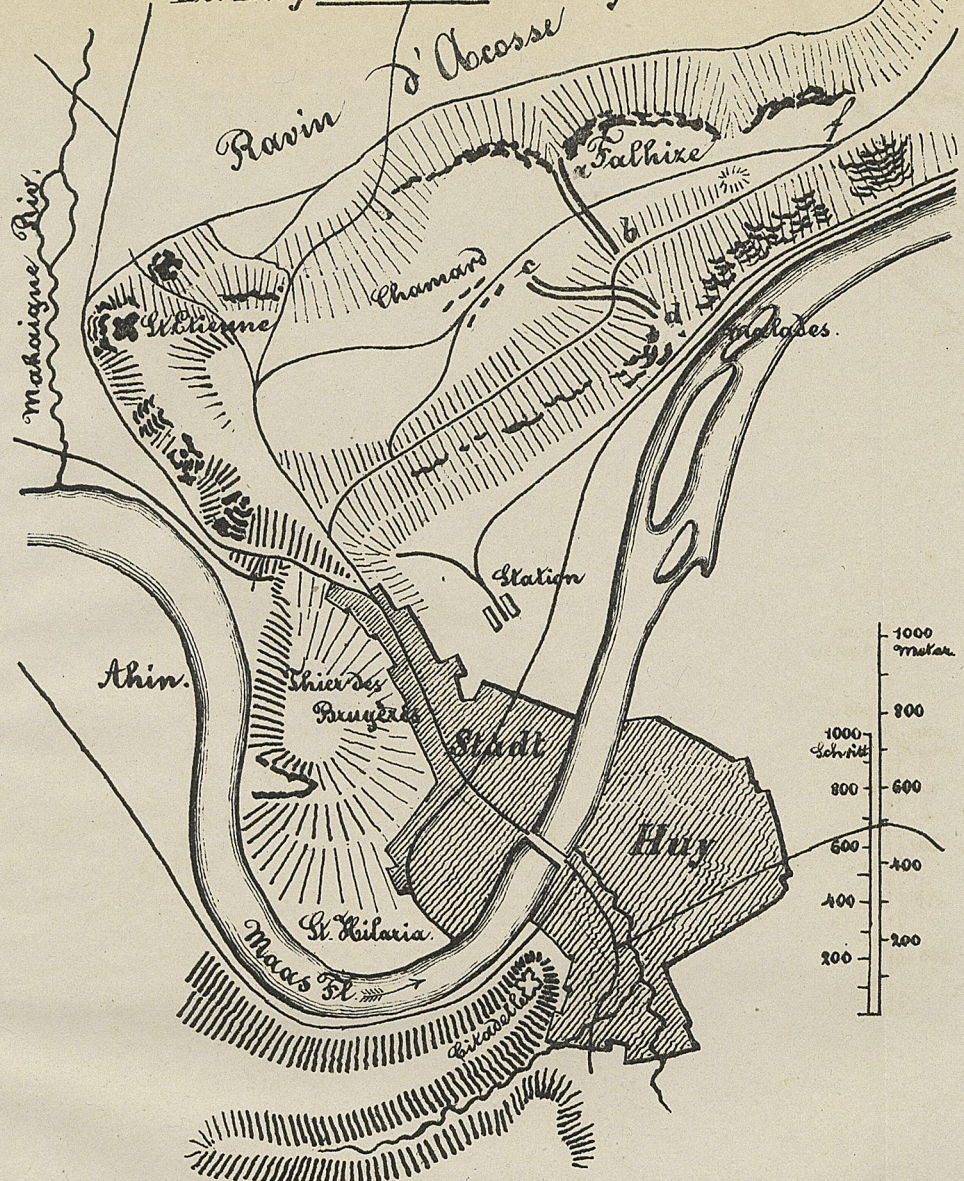
Uebersicht der Feldzüge Caesars gegen Germanische Stämme am Rhein.

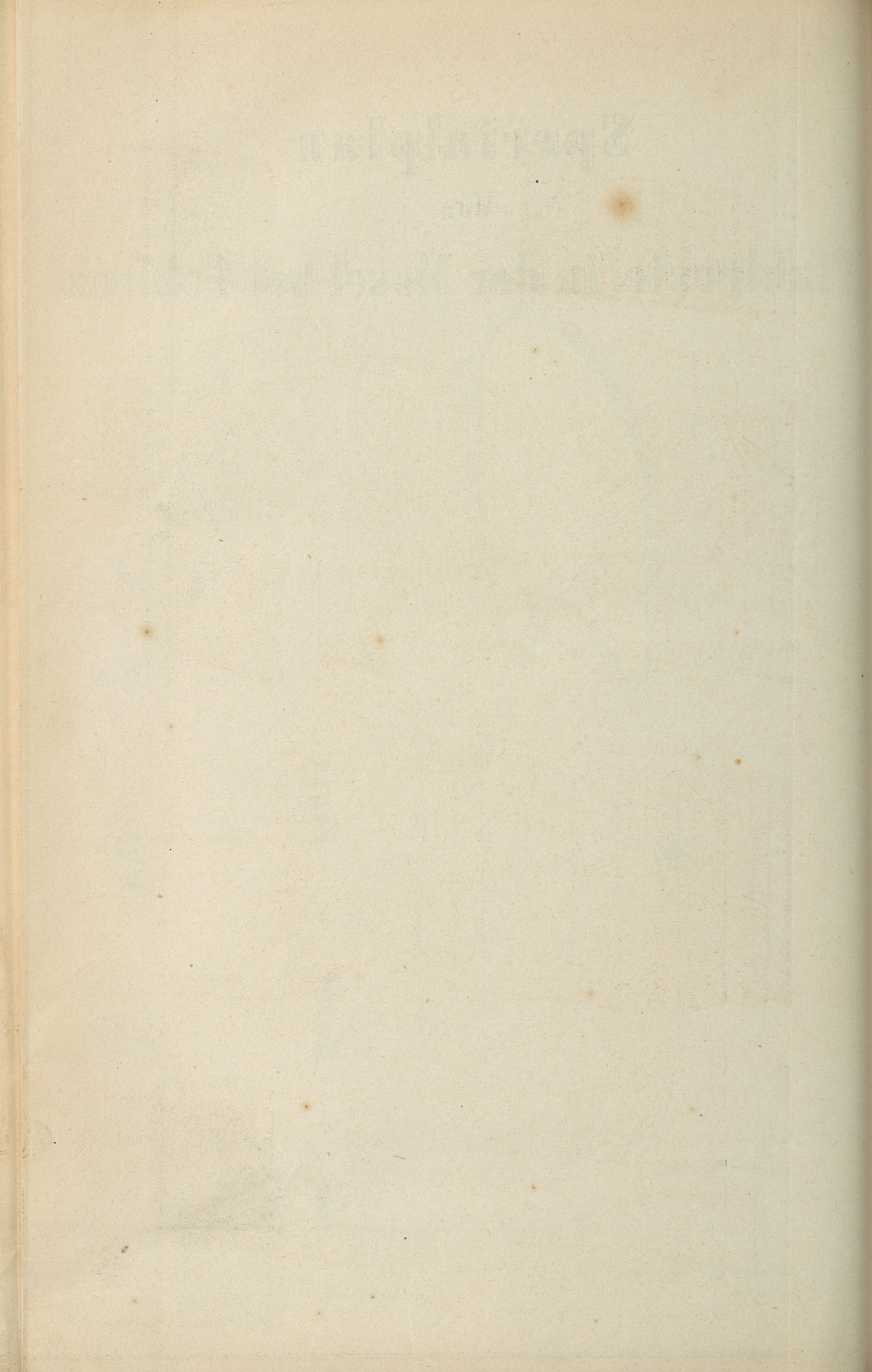
Fig. I.



- 1 Feldzug gegen die Helvetier.
- 2 Feldzug gegen Ariovist.
- 3 Eroberung des oppidum Aduatuca, rum, Aduatuca.
- 4 Feldzug gegen die Moriner.
- 5 Feldzug gegen die Tenclerer und Usipeter, erster Rheinübergang.
- 6 Feldzüge gegen Britannien.
- 7 Winterquartiere und Verlust von Aduatuca.
- 8 Feldzug gegen die Eburonen und Treverer. Zweiter Rheinübergang. Rückkehr nach Aduatuca.
- 9 Nochmalige Verwüstung des Eburonenlandes.

Der Berg Falhize bei Huy. Fig. II.

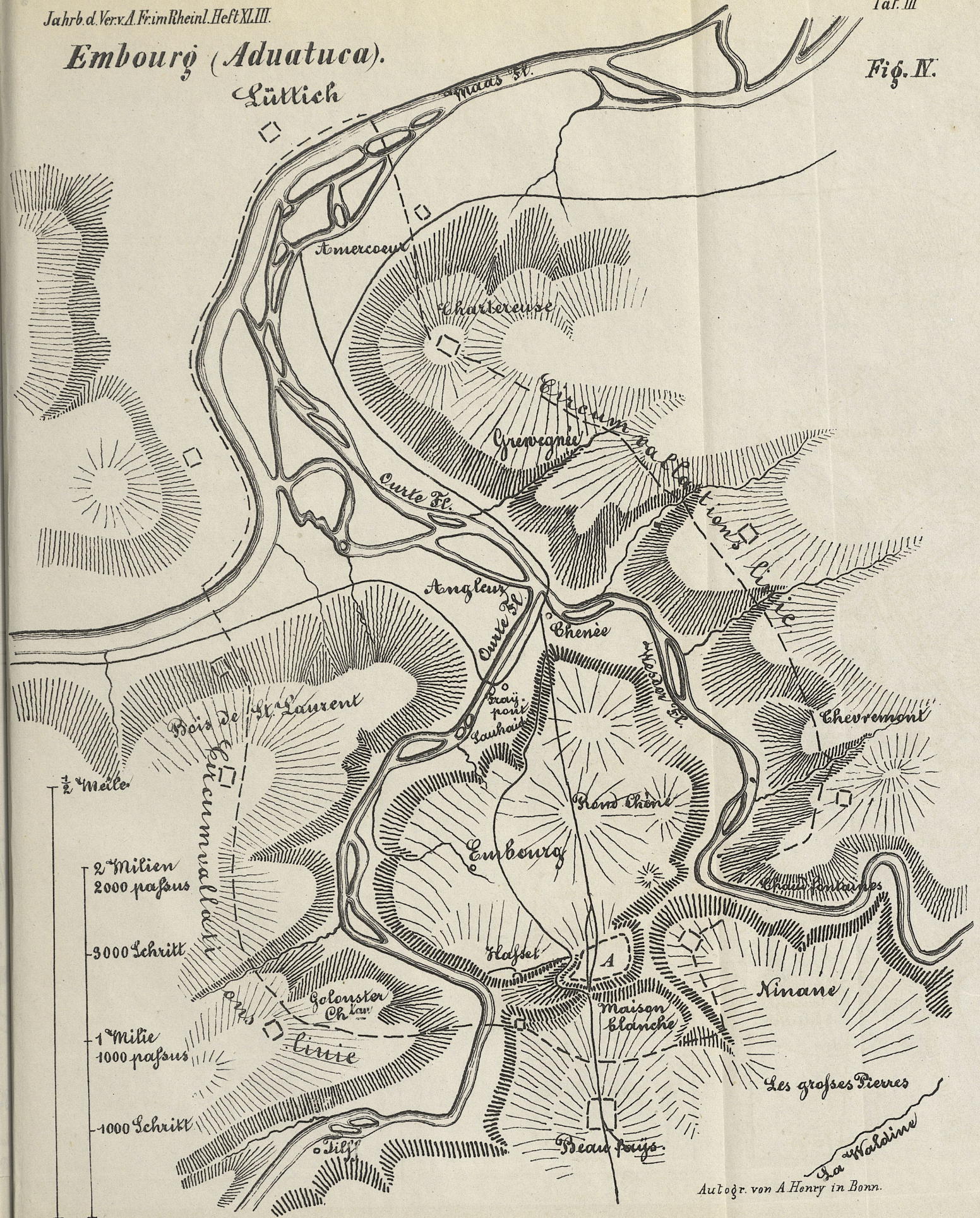




Embourog (Aduatuca).

Lüttich

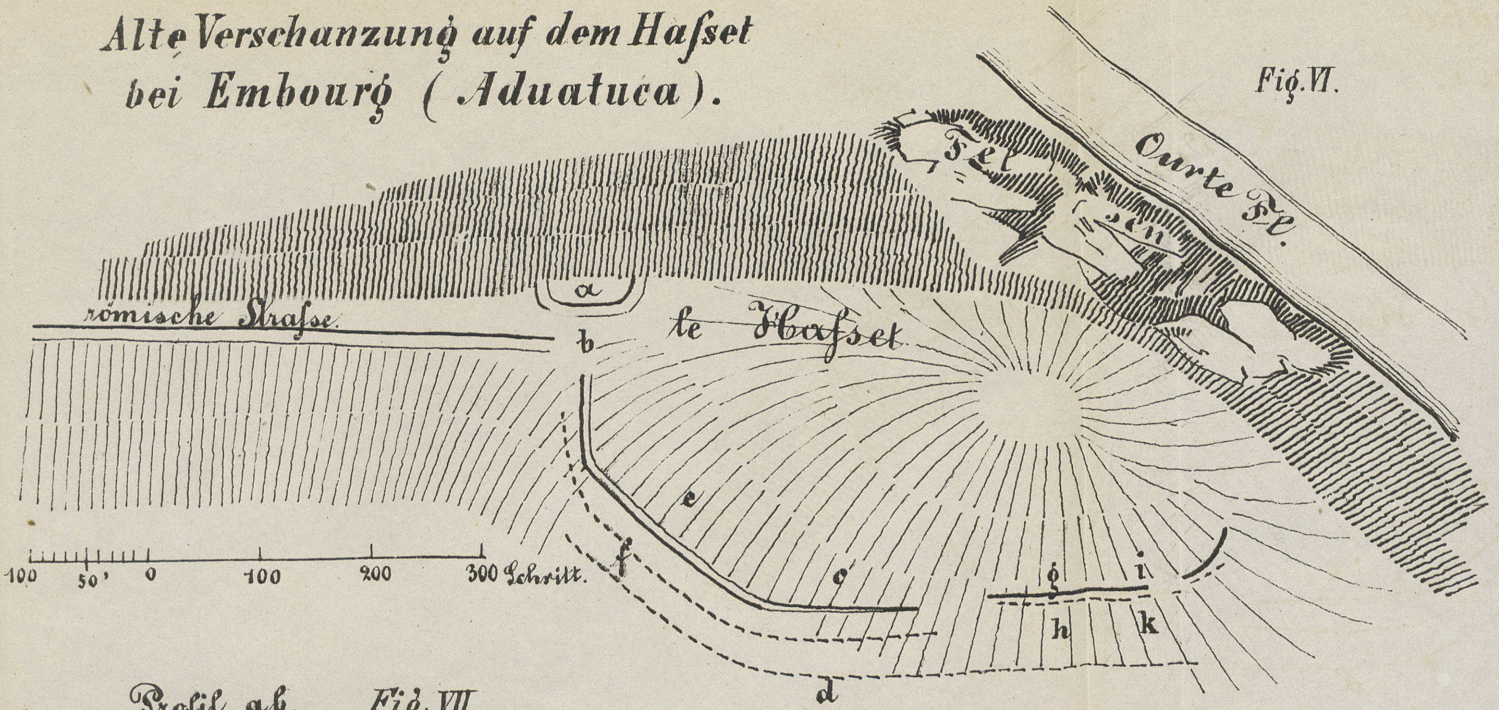
Fig. IV.



Autoqr. von A Henry in Bonn.

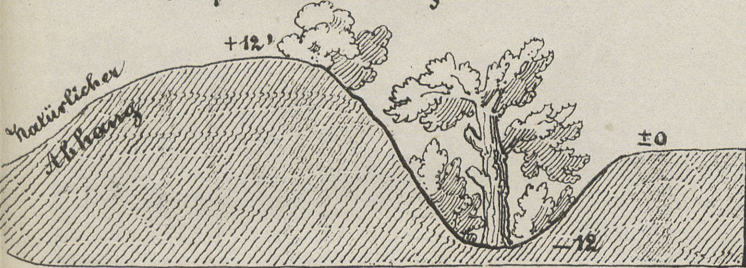
Alte Verschanzung auf dem Hafset bei Embourg (Aduatuca).

Fig. VI.



Profil ab. Fig. VII.

Profil cd. Fig. VIII.



Profil ef. Fig. IX.

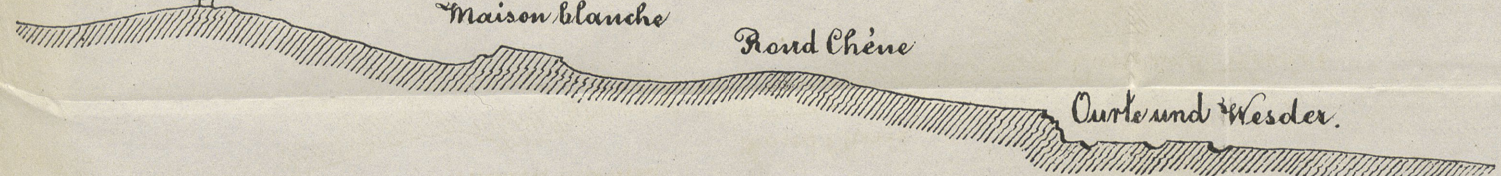


Profil gh. Fig. X.

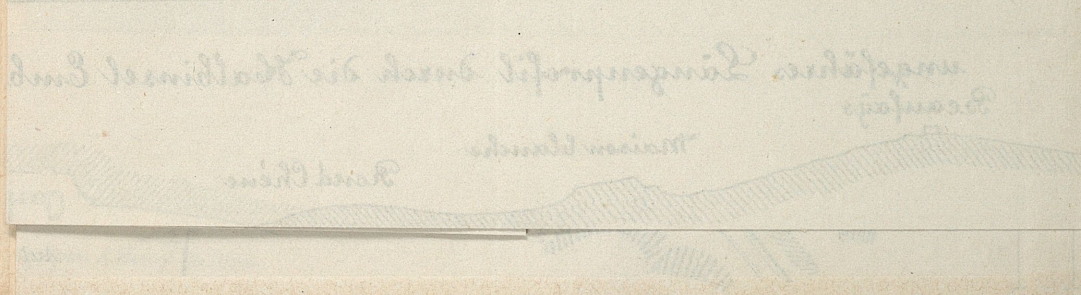
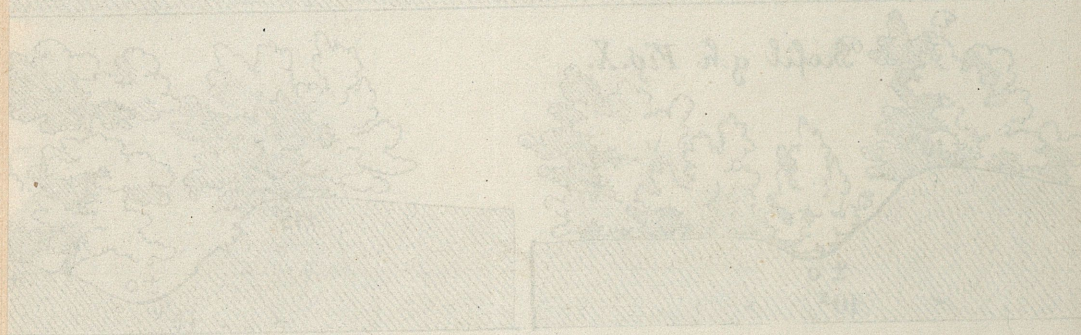
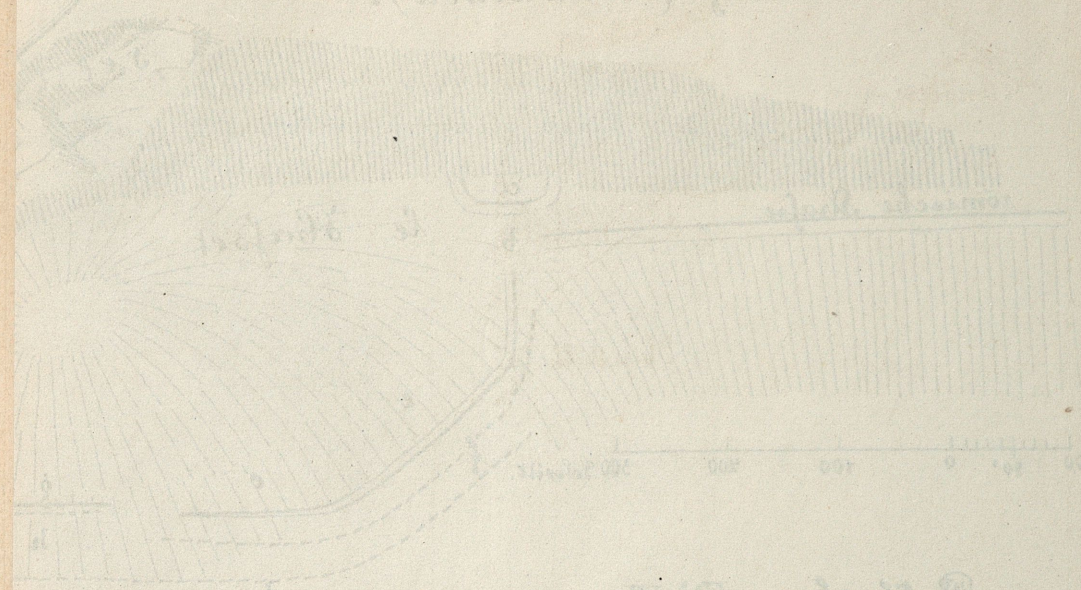
Profil ik. Fig. XI.



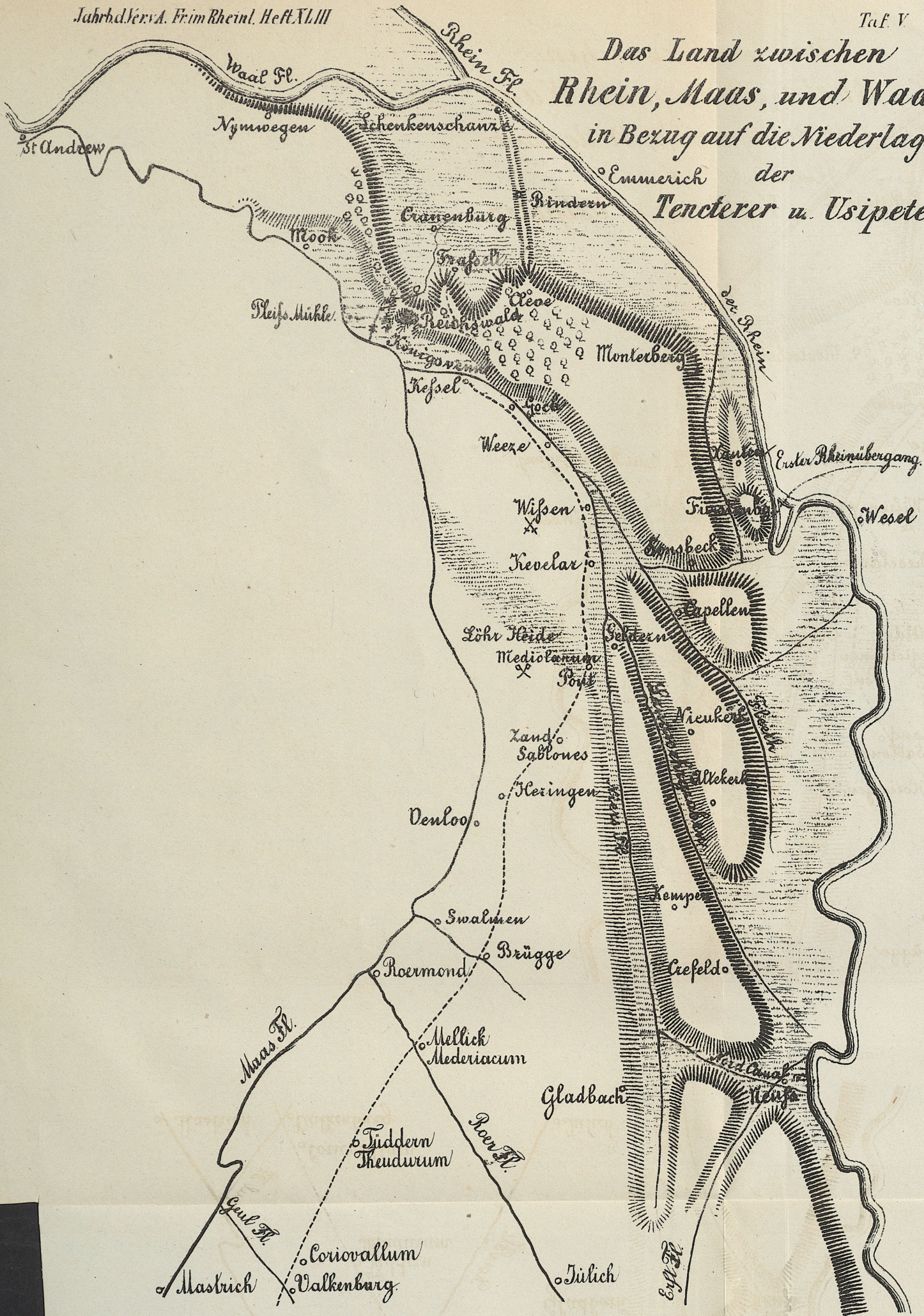
ungefähres Längenprofil durch die Halbinsel Embourg. Fig. V.



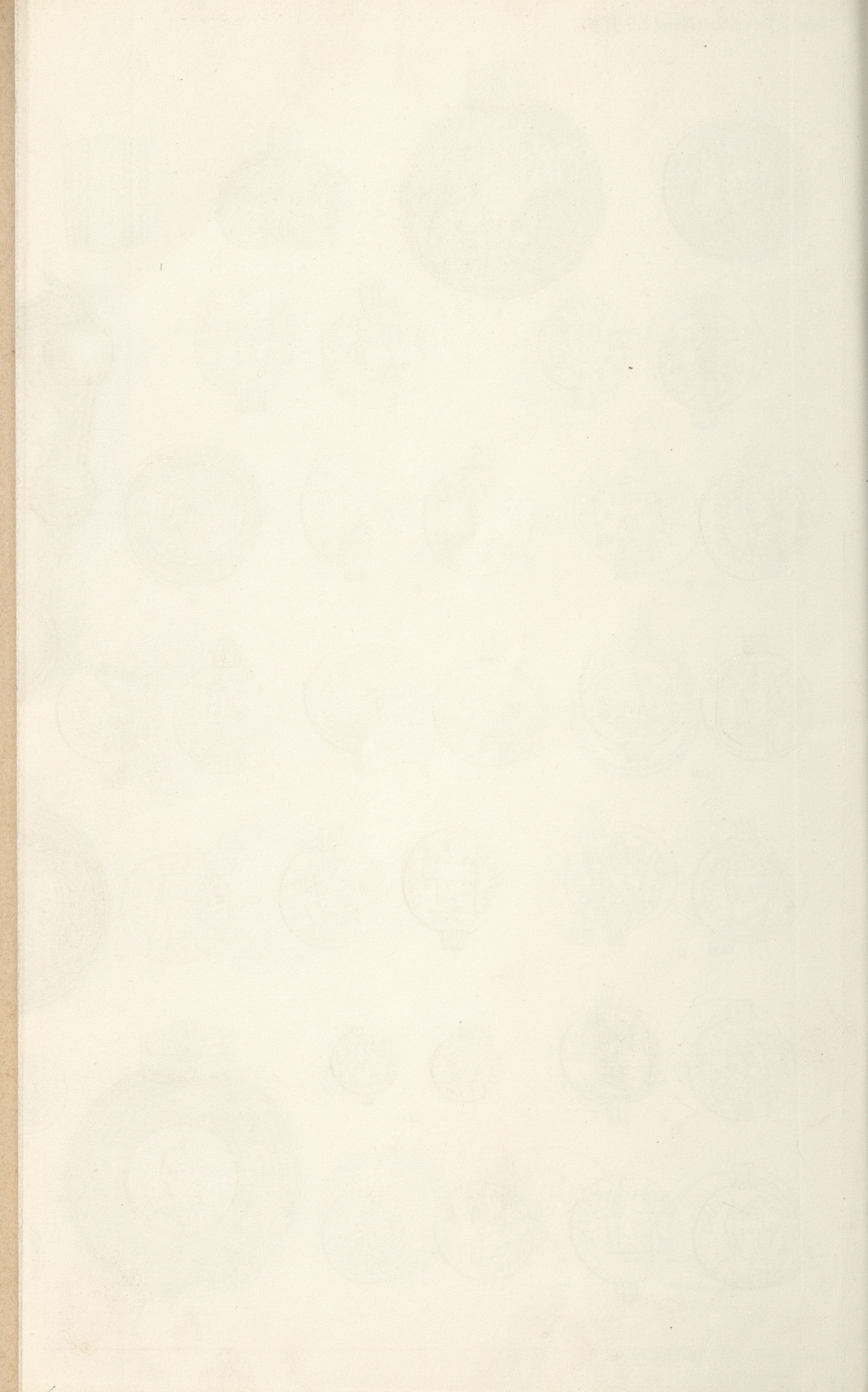
Die Verschiebung auf dem Hiesel
bei Entlochung (Abnahme).

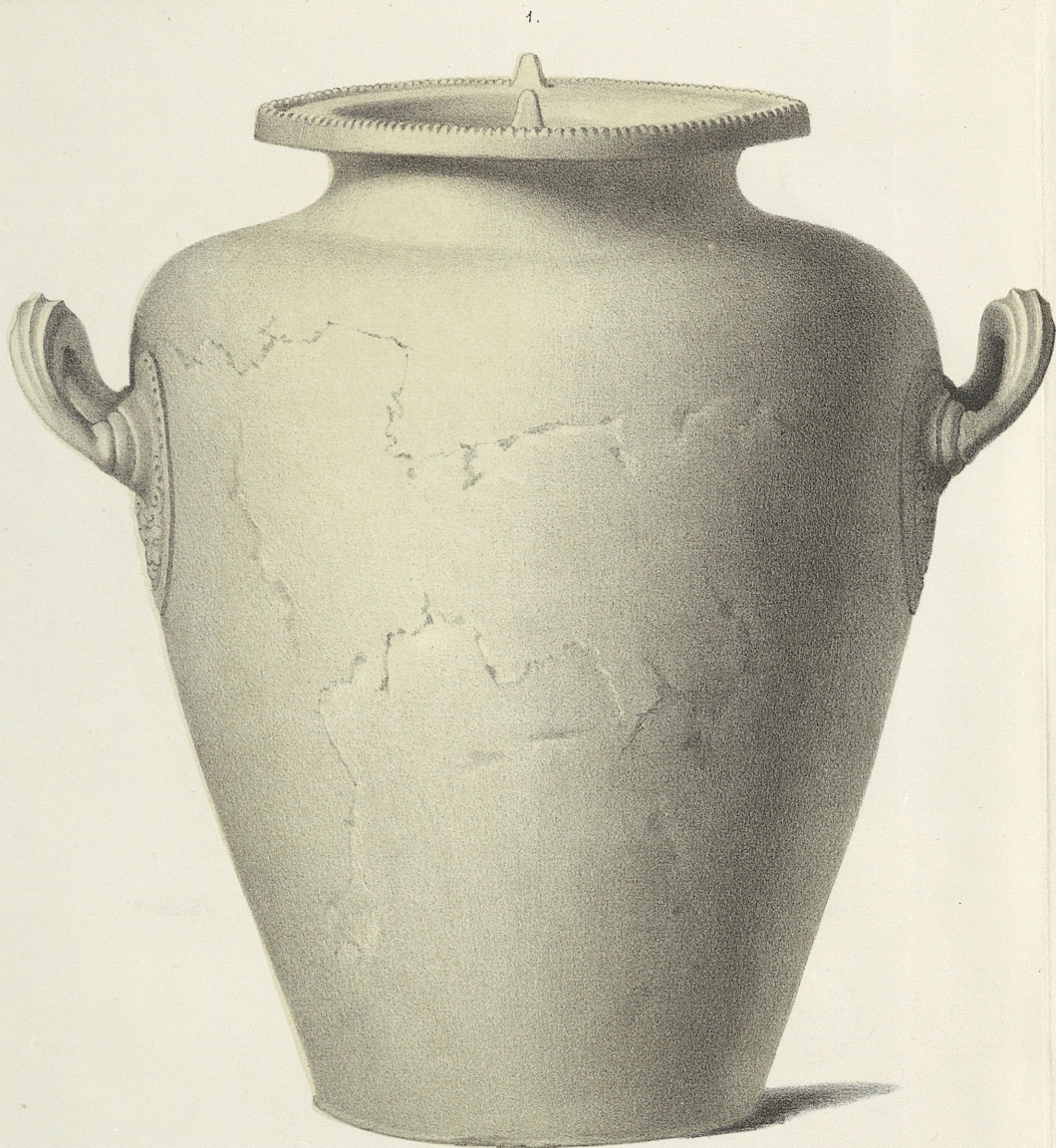


Das Land zwischen Rhein, Maas, und Waal in Bezug auf die Niederlage der Tencterer u. Usipeter.

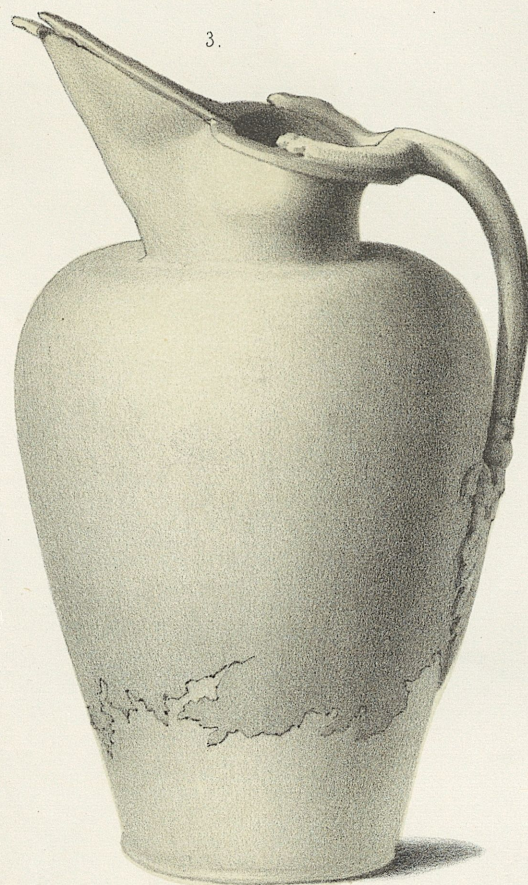
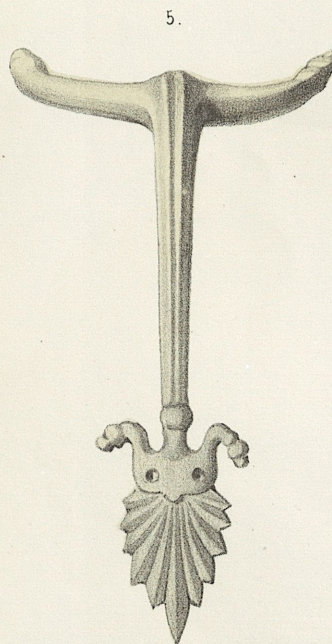




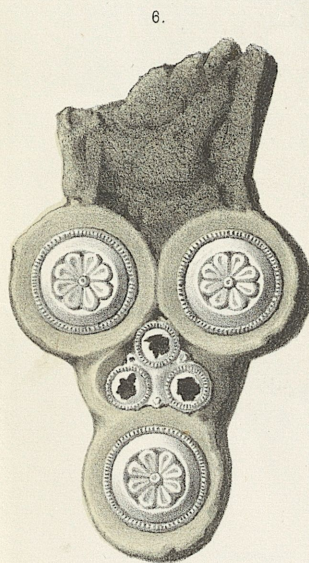




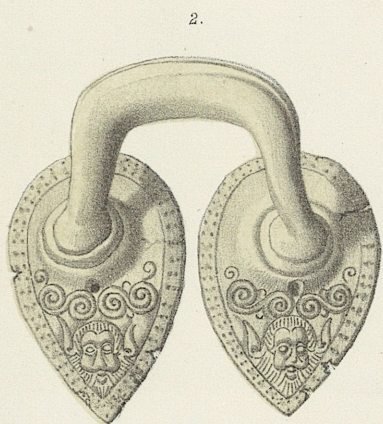
$\frac{1}{3}$ nat. GröÙe.



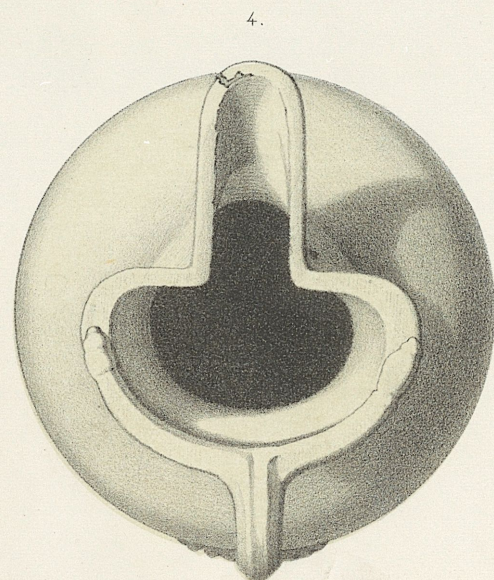
$\frac{1}{3}$ nat. GröÙe



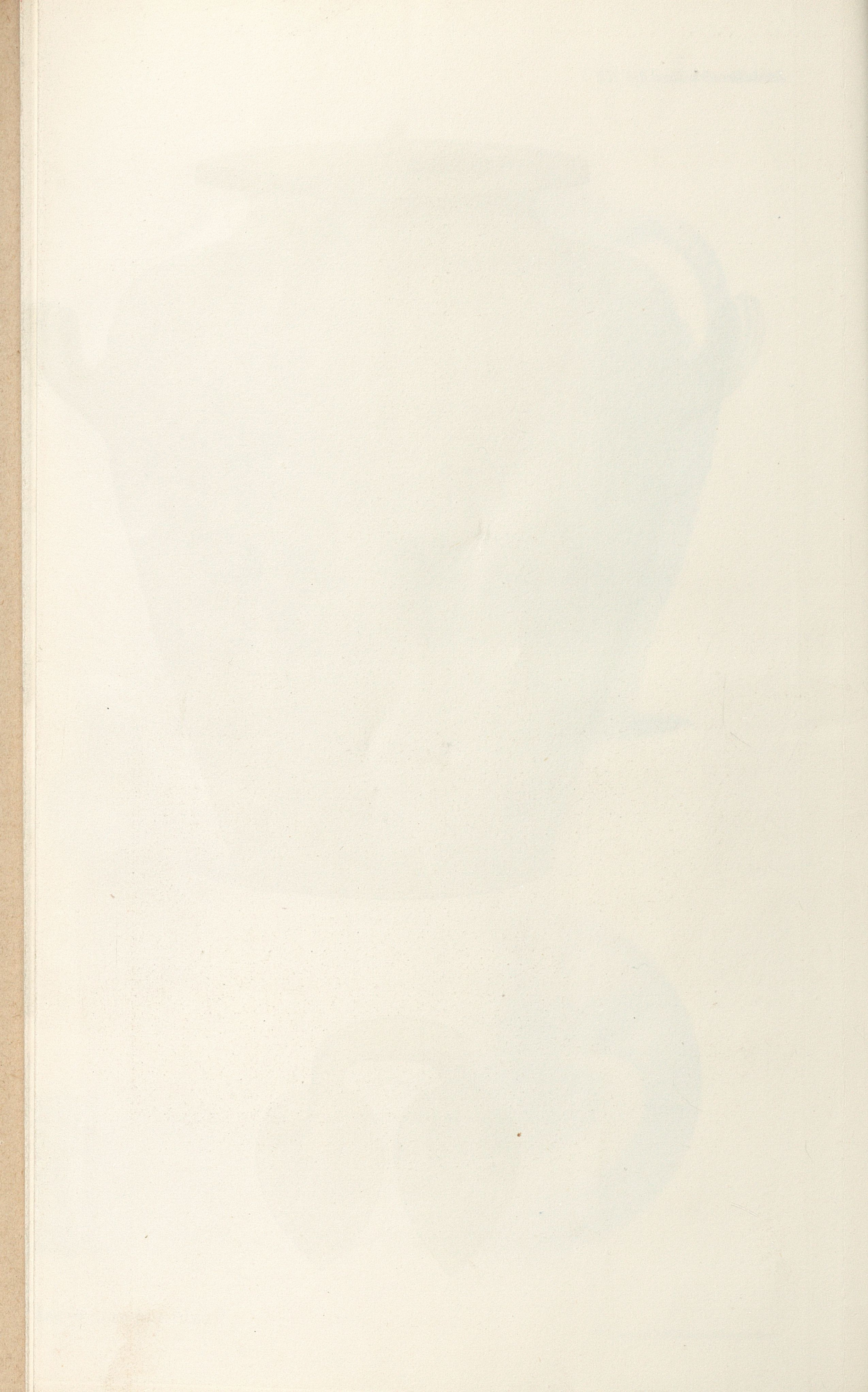
nat. GröÙe

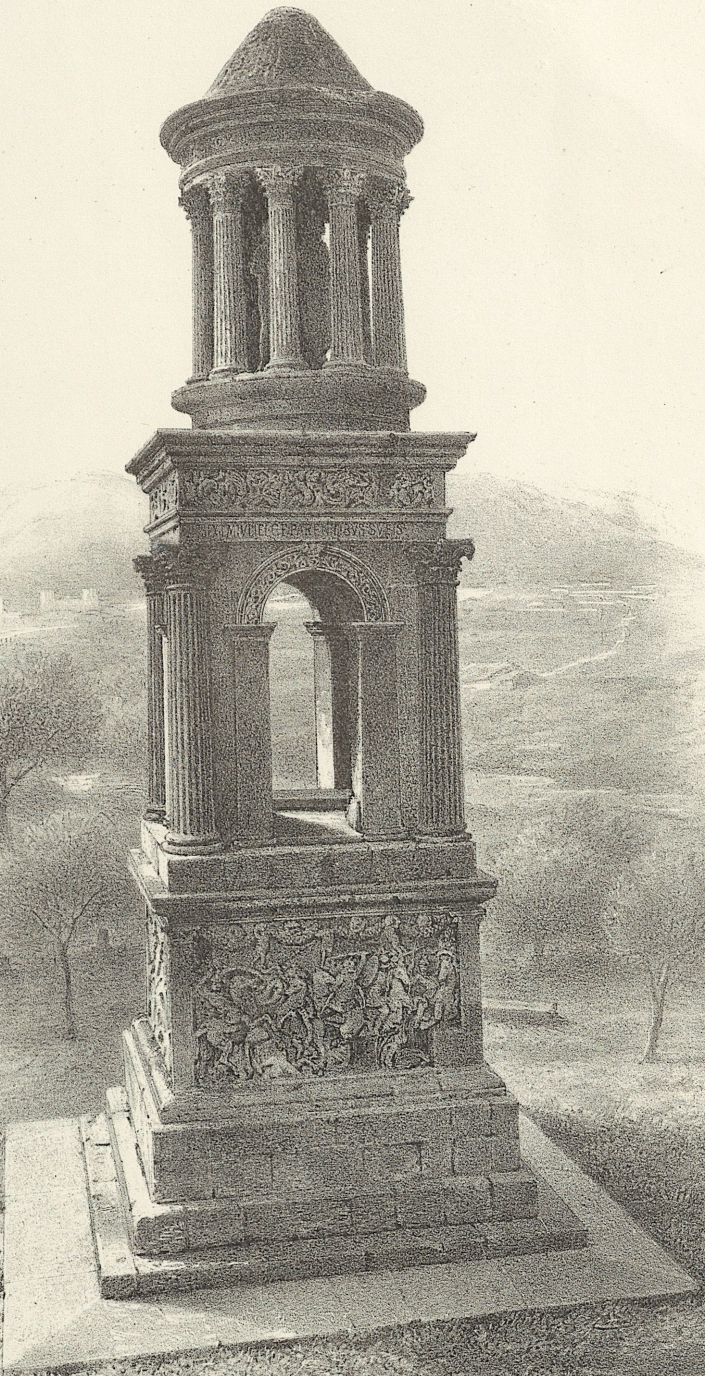


nat. GröÙe

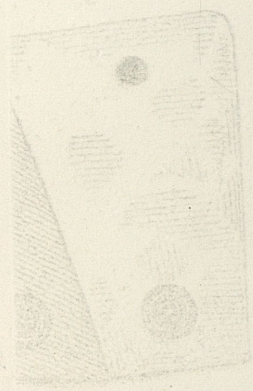
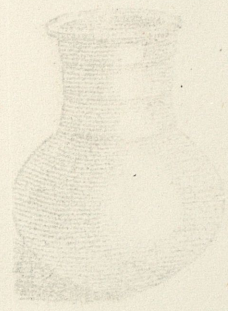


Gräbfund von Weisskirchen an der Saar





Grabmal der Julier zu St. Remy.



IVVIN

IVVIN

2112

Fig. 2.

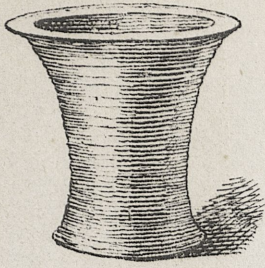


Fig. 3.

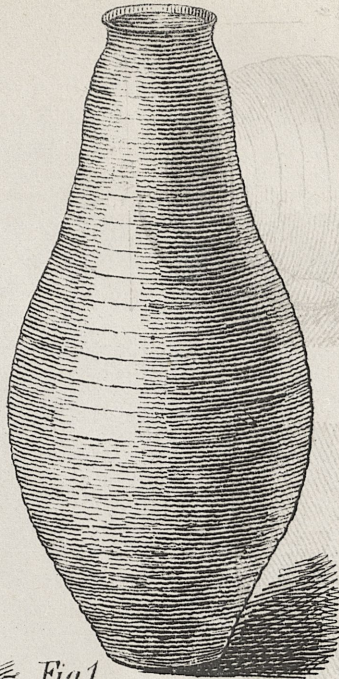


Fig. 4.

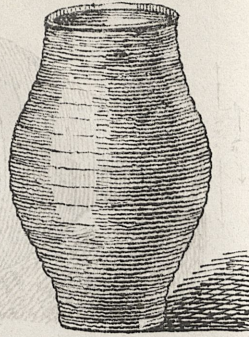


Fig. 7.

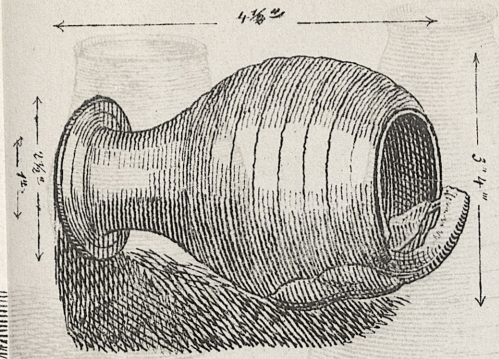


Fig. 5.

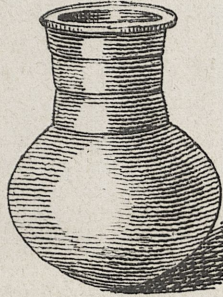


Fig. 6.

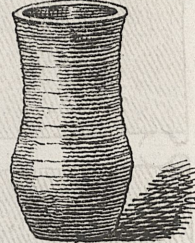


Fig. 8.

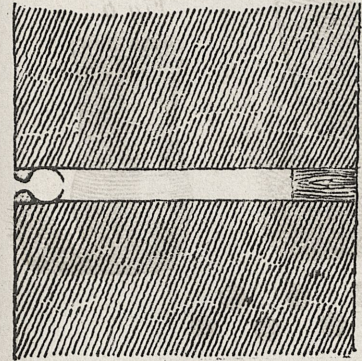


Fig. 1.



Fig. 9.

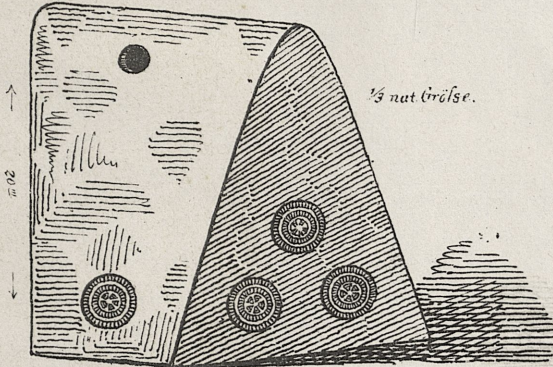


Fig. 10c.

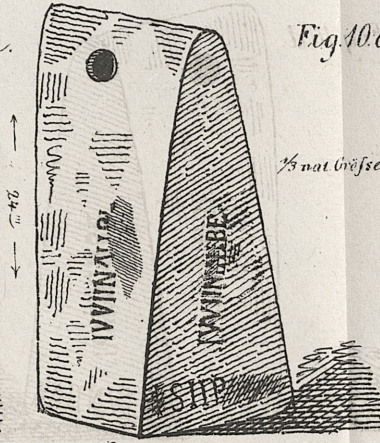


Fig. 10d.

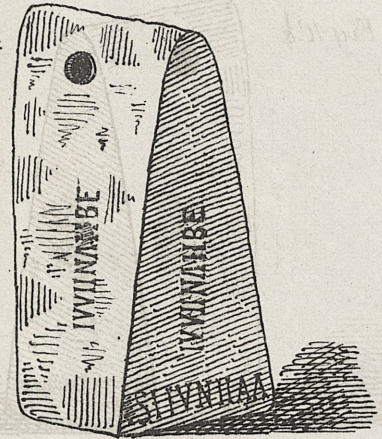


Fig. 10a.



Fig. 10b.



nat. Grösse

IVVINNAIBE

zu 10 d.

IVVINAIIBE

zu 10 b.

SI IVNIIAA

IVVINNAID!

IVVINNAIBE

SIIP

zu 10c

zu 10a