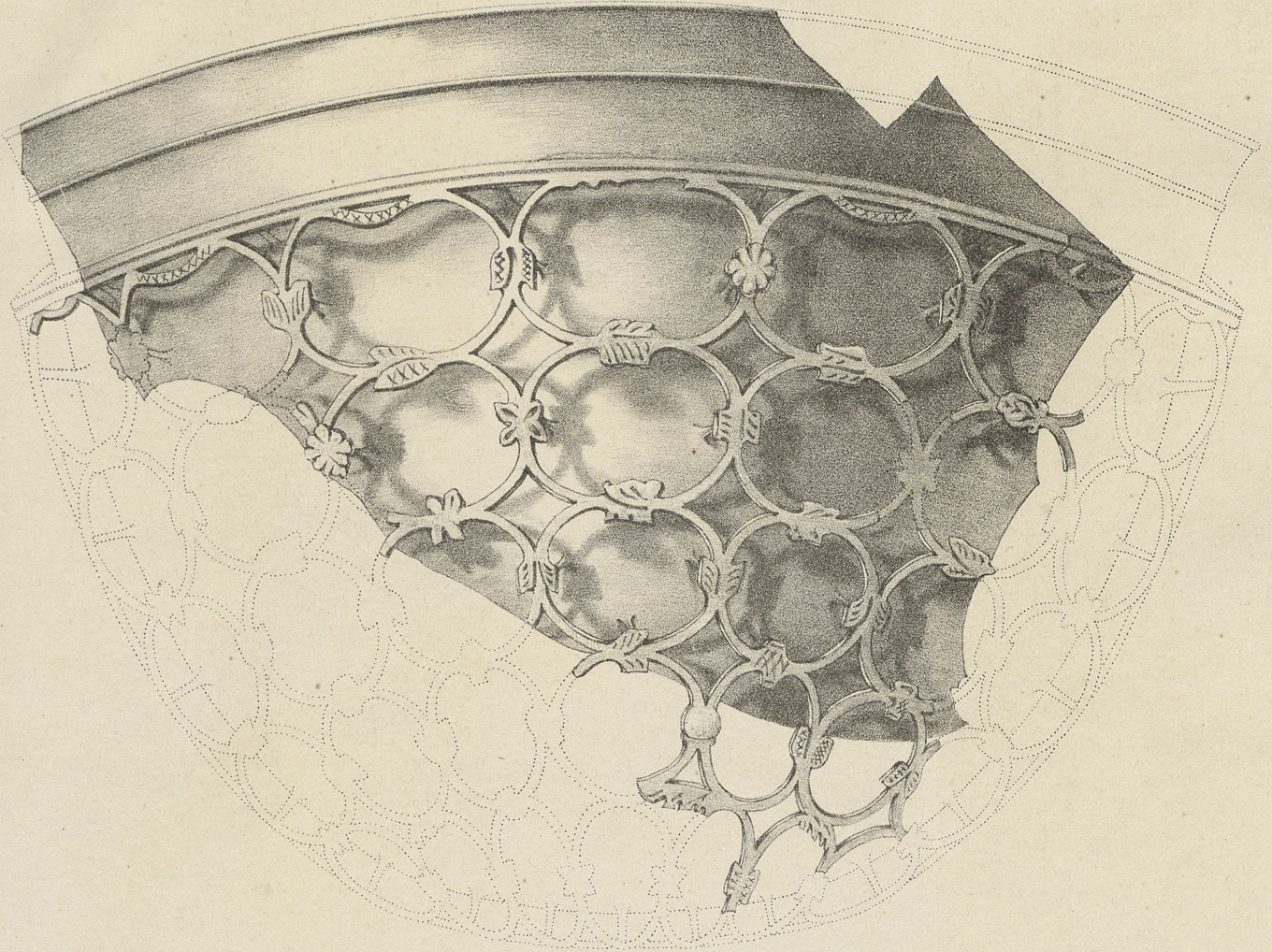
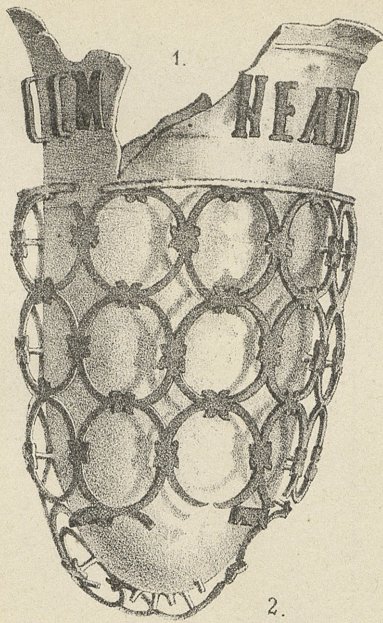


Lith. Anst. v. W. Loeillot in Berlin.

Marmorstatuette aus Wellen <sup>a. d.</sup> Mosel.



1° Strassburg. 2 Grabfund von Hohen - Sülzen.

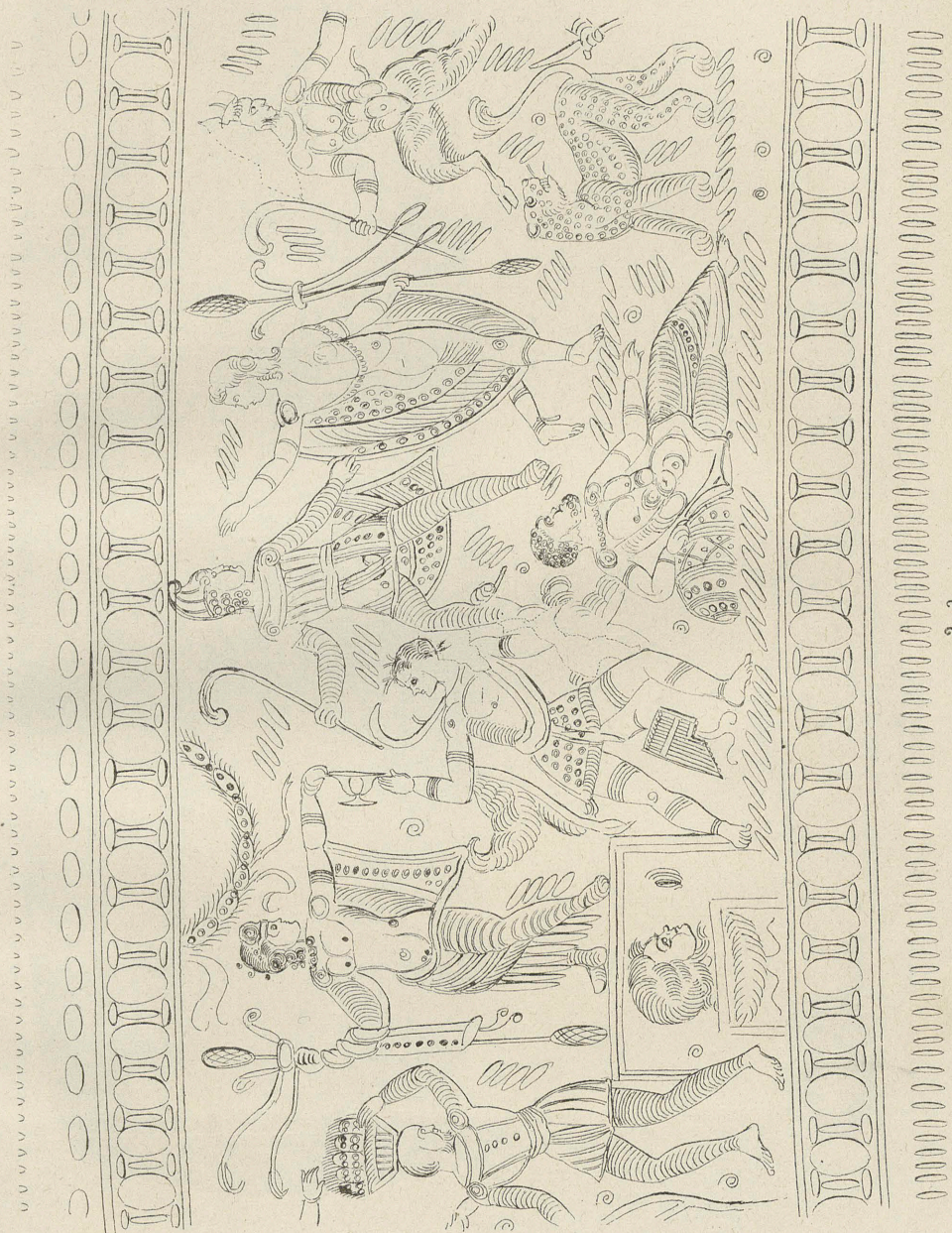


3.

2.

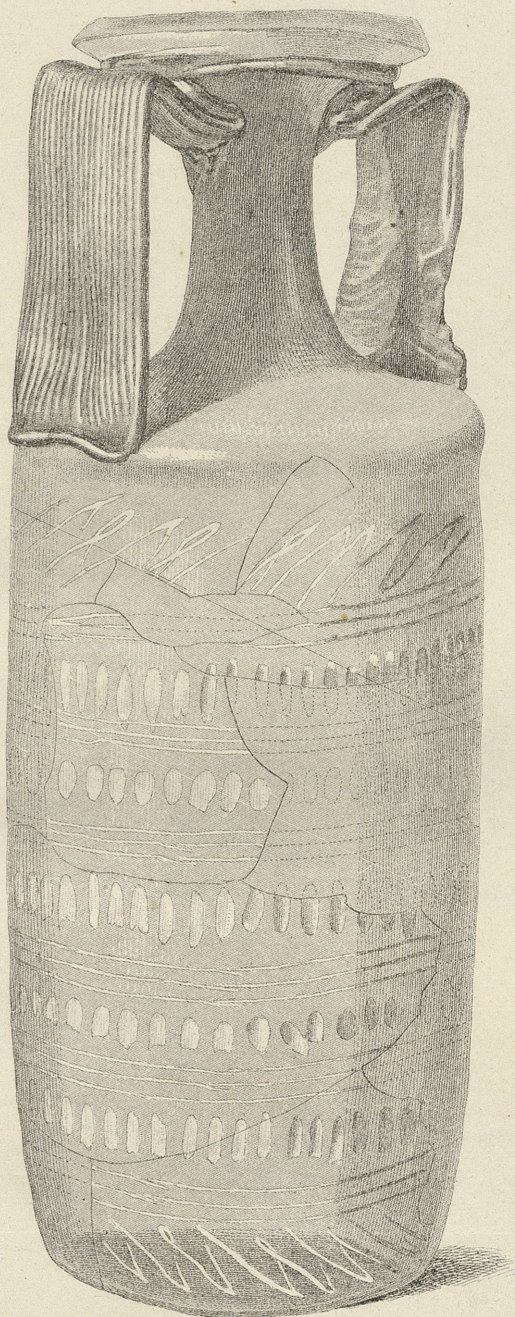
4.

GRABFUND VON HOHEN-SÜLZEN.

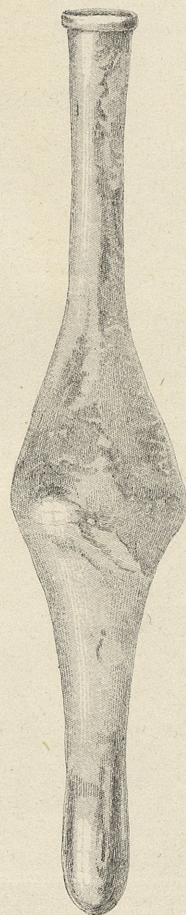


2 a.

GRABFUND VON HOHEN - SÜLZEN.



5.



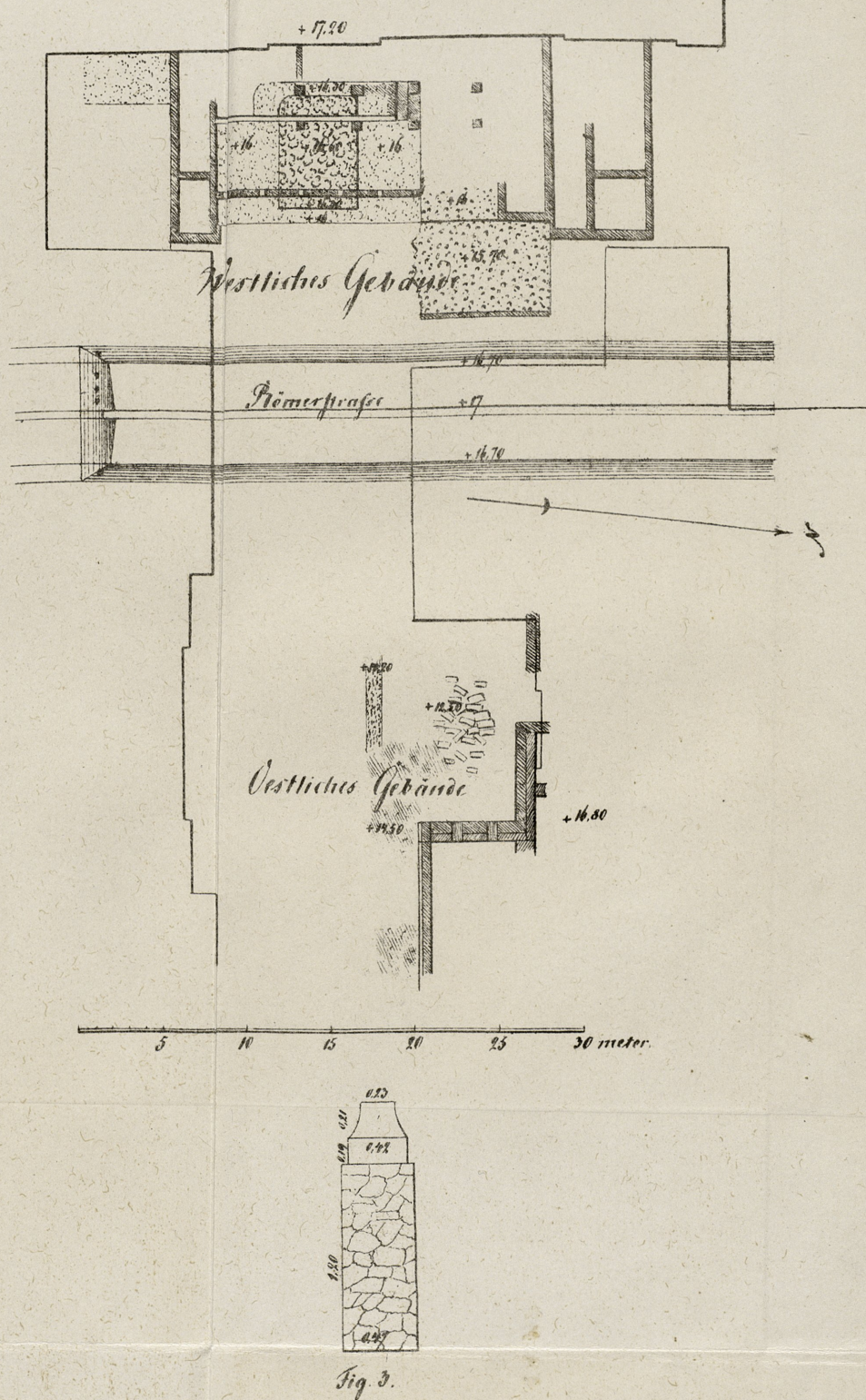
6.

**GRABFUND VON HOHEN - SÜLZEN.**

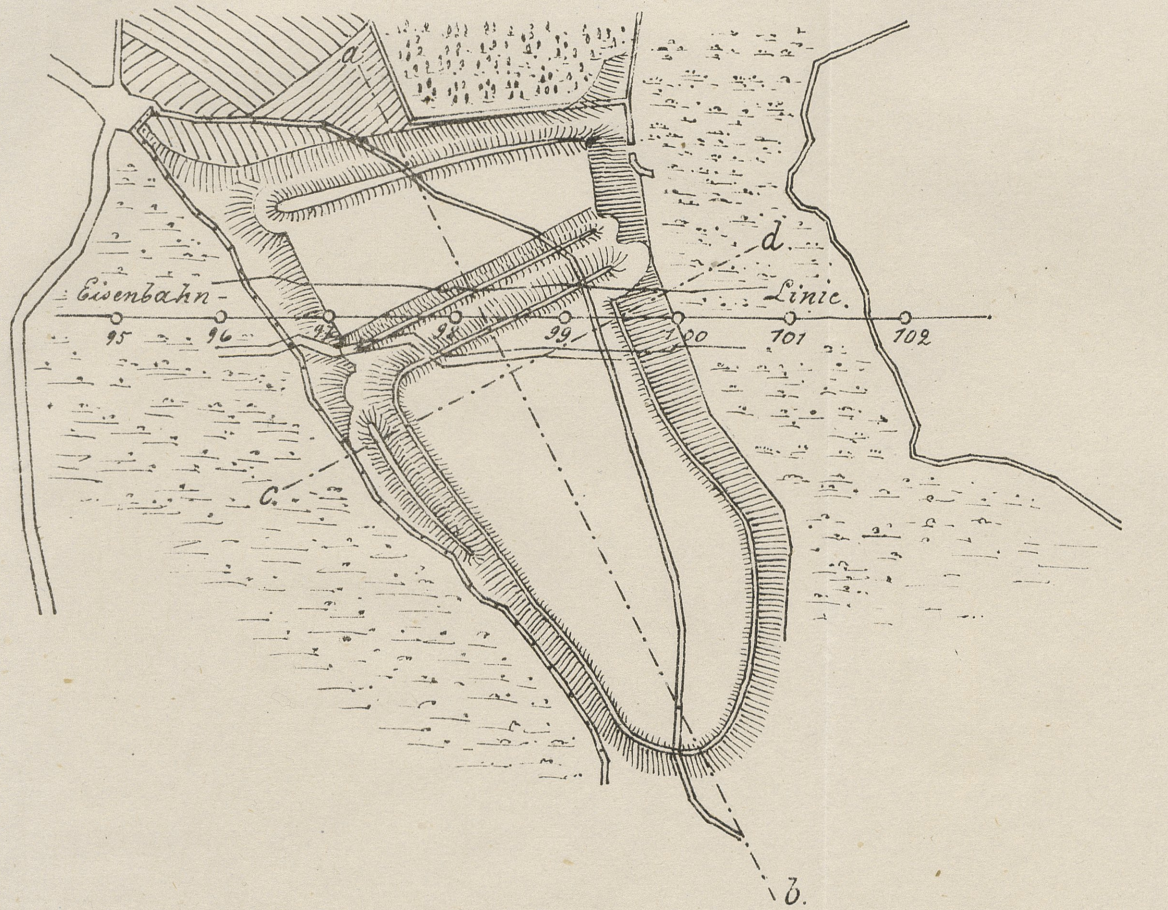
Plan 1.



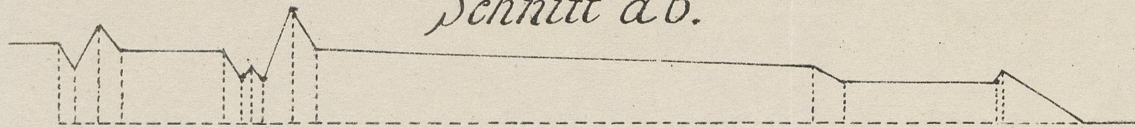
Plan 2.



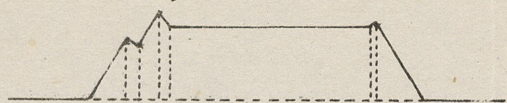
Die Steeger Burgwart an d. Lippe.



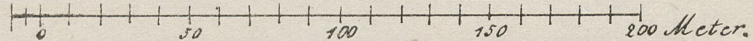
Schnitt a b.



Schnitt c d.

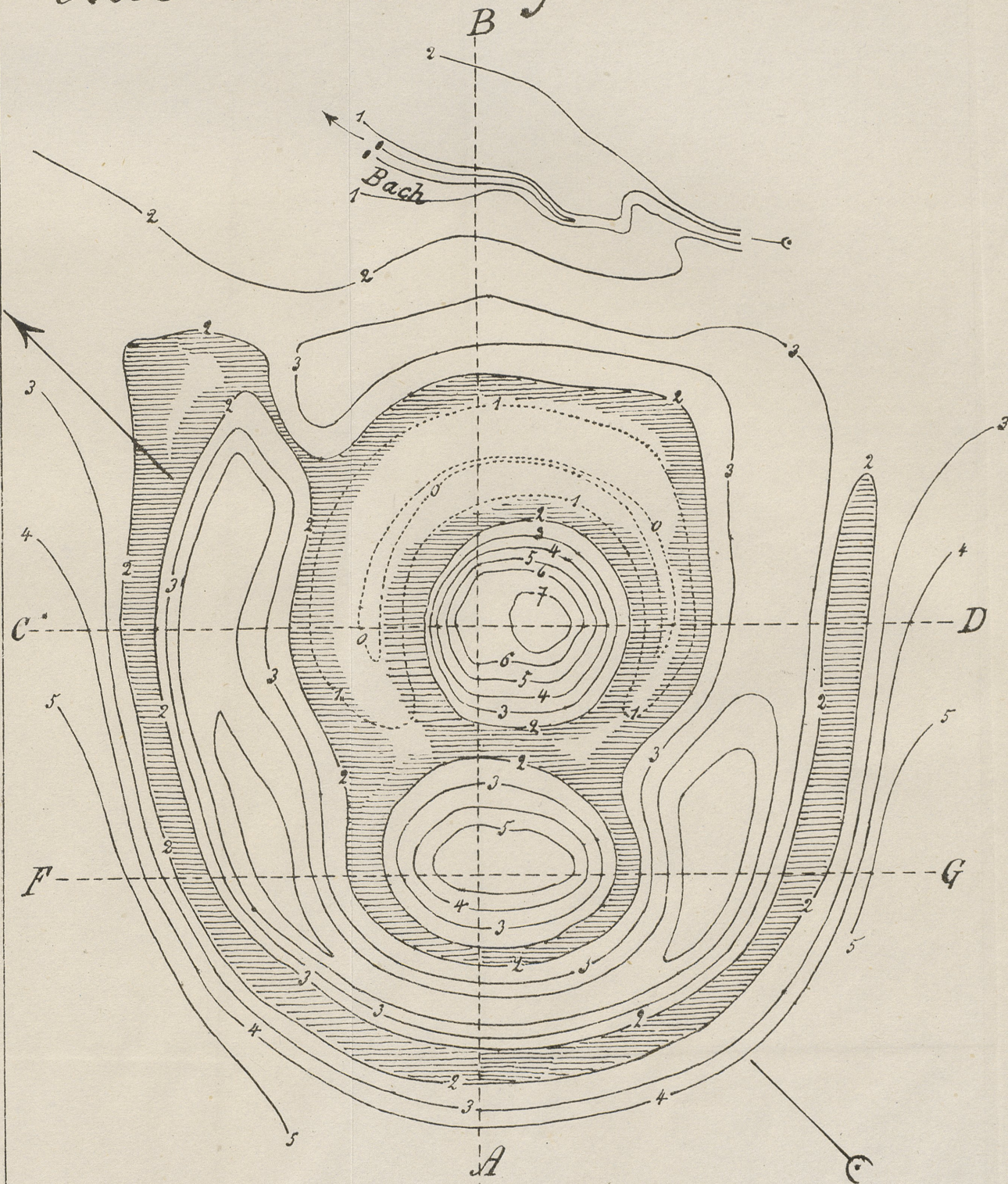


Masstab für die Situation 1:2500.

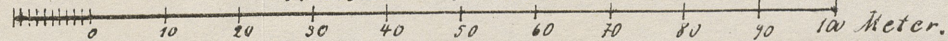


Aufgew. v. Baumeister Sachse.

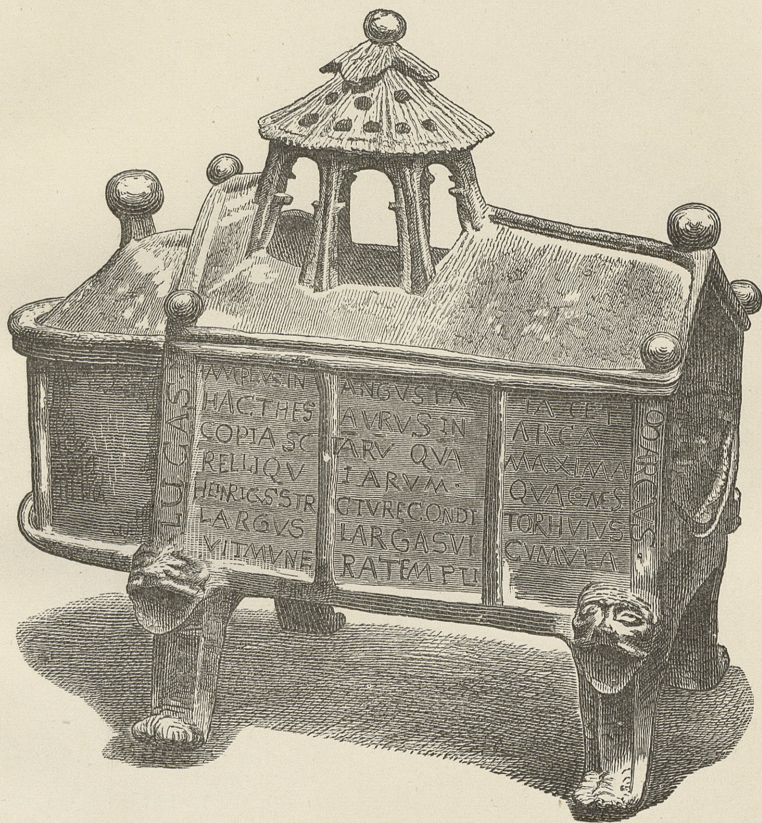
Alte Verschanzung bei Hünxe. Taf. VII.



Masstab 1:1000.



Aufgen. vom Reg. Baurath Lieber.



Das Blei-Reliquiar in Limburg a. d. Lahn.