

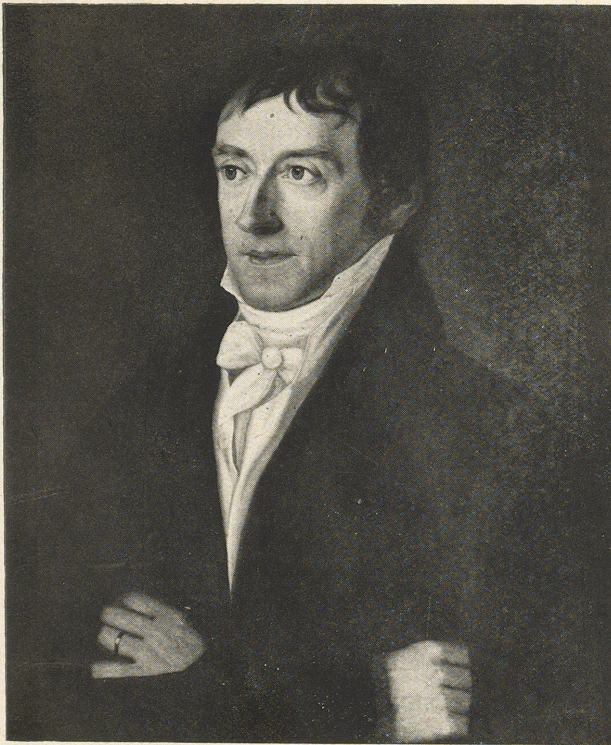


B. G. Niebuhr.





1



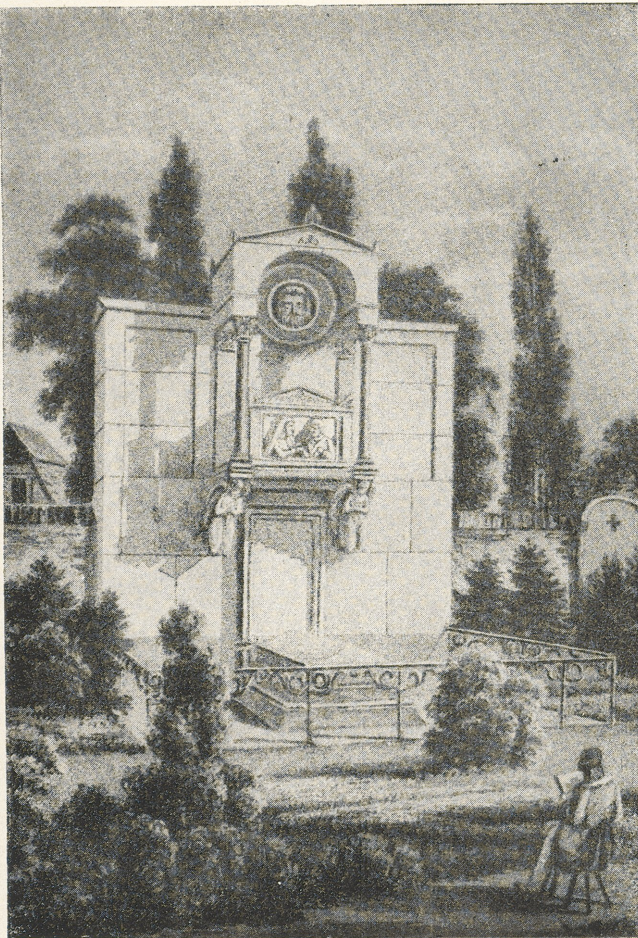
2

B. G. Niebuhr.





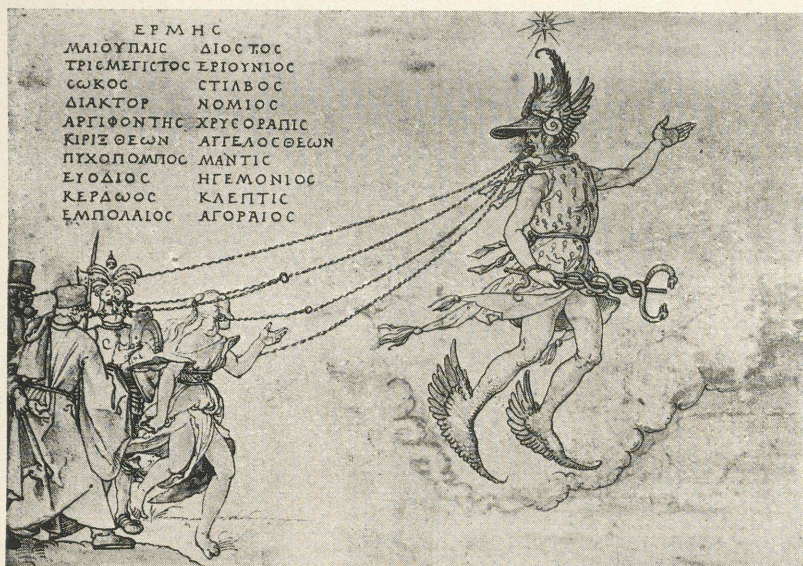
1



2

Grabmal Niebuhrs in Bonn.





1. Zeichnung Dürers.



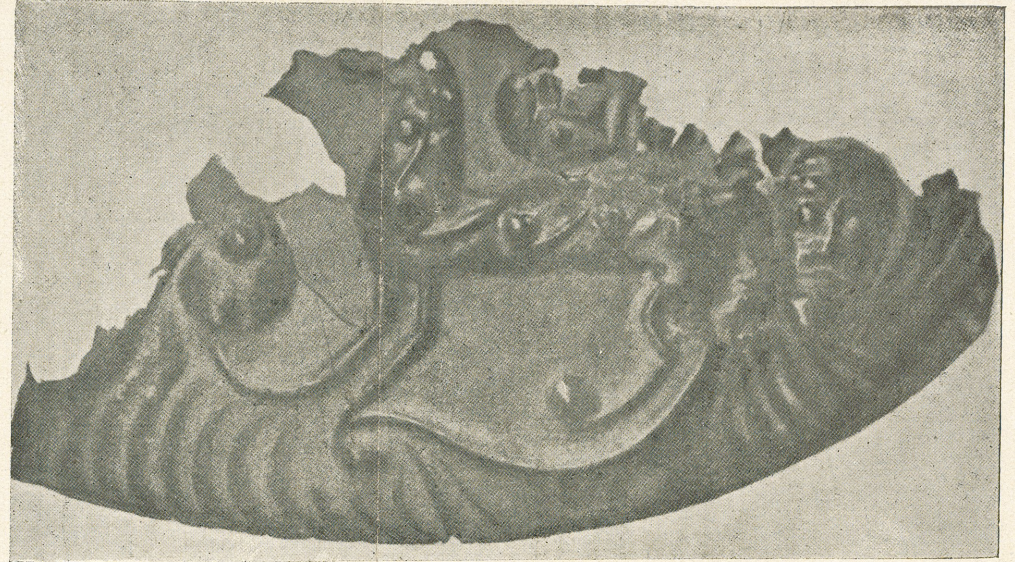
2. Zeichnung Raffaels.







1



7



2



3



8



9



4



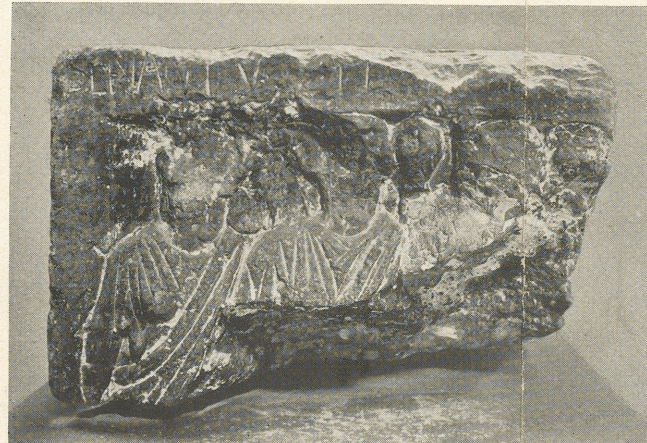
10



5



6



11



12





1



2



3



4



5



6

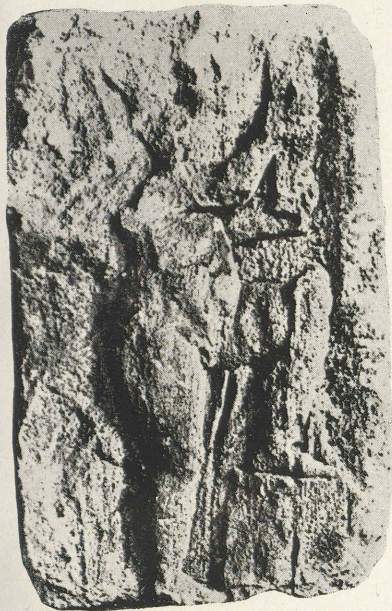


7



8





1



2



3



4



6

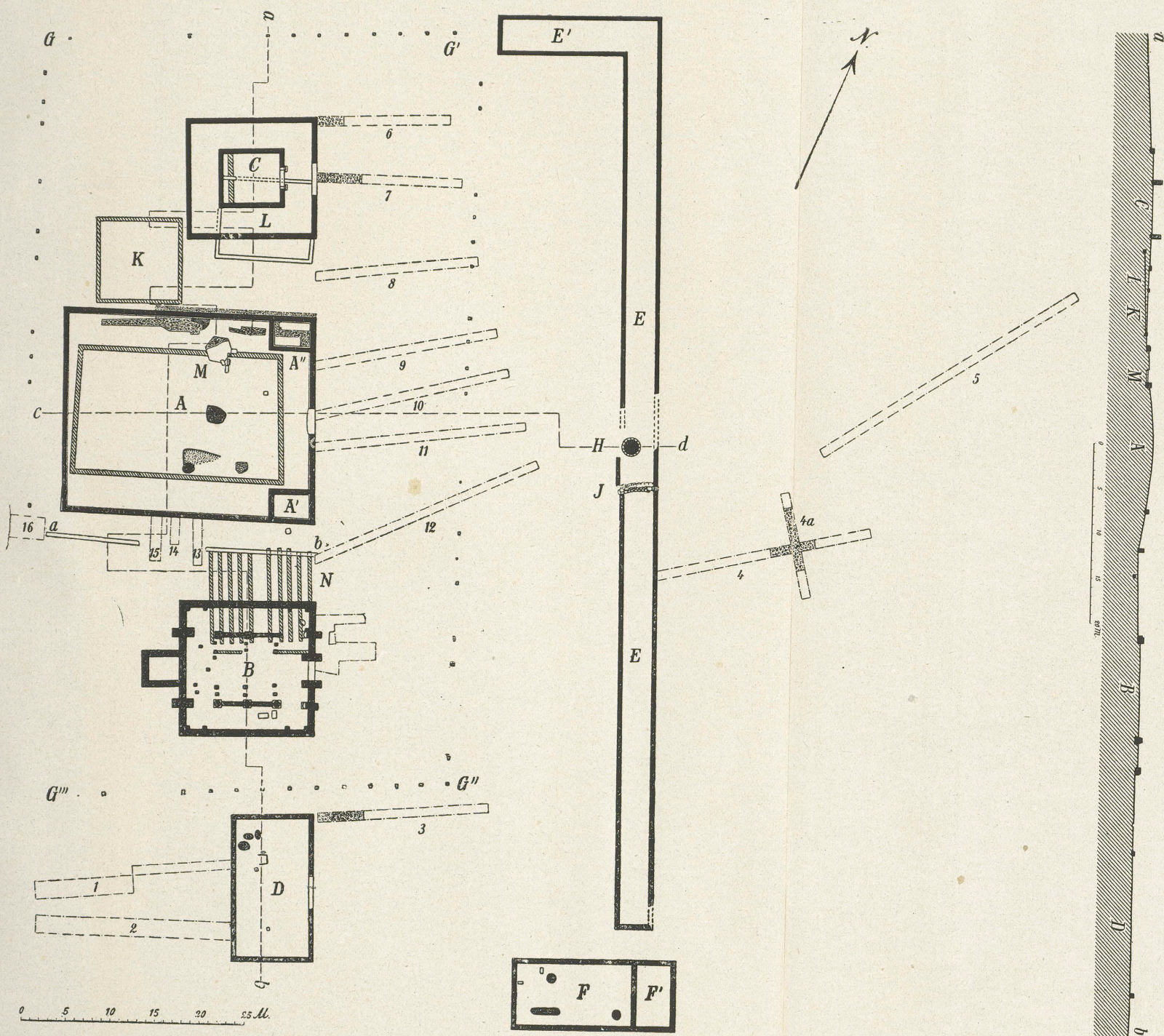


5



7

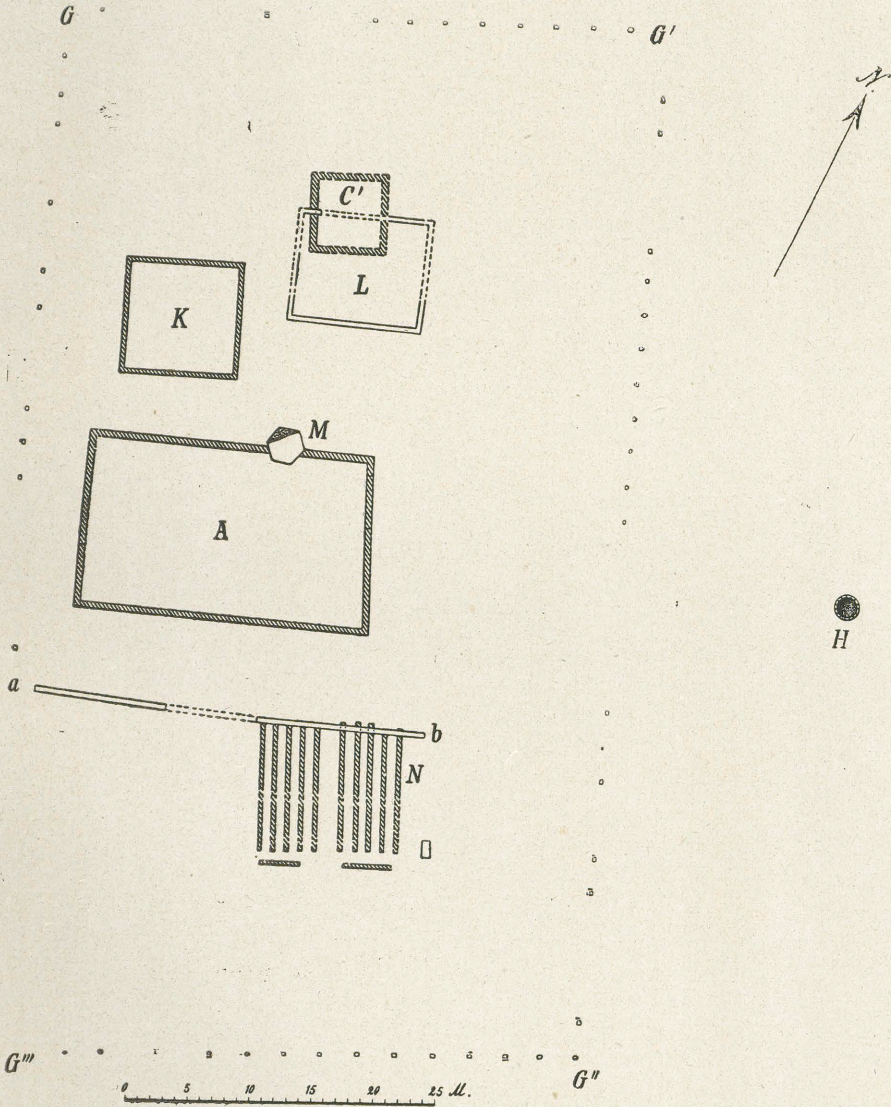




Tempelbezirk bei Pesch. Gesamtübersicht der Grabung und Schnitt a-b.

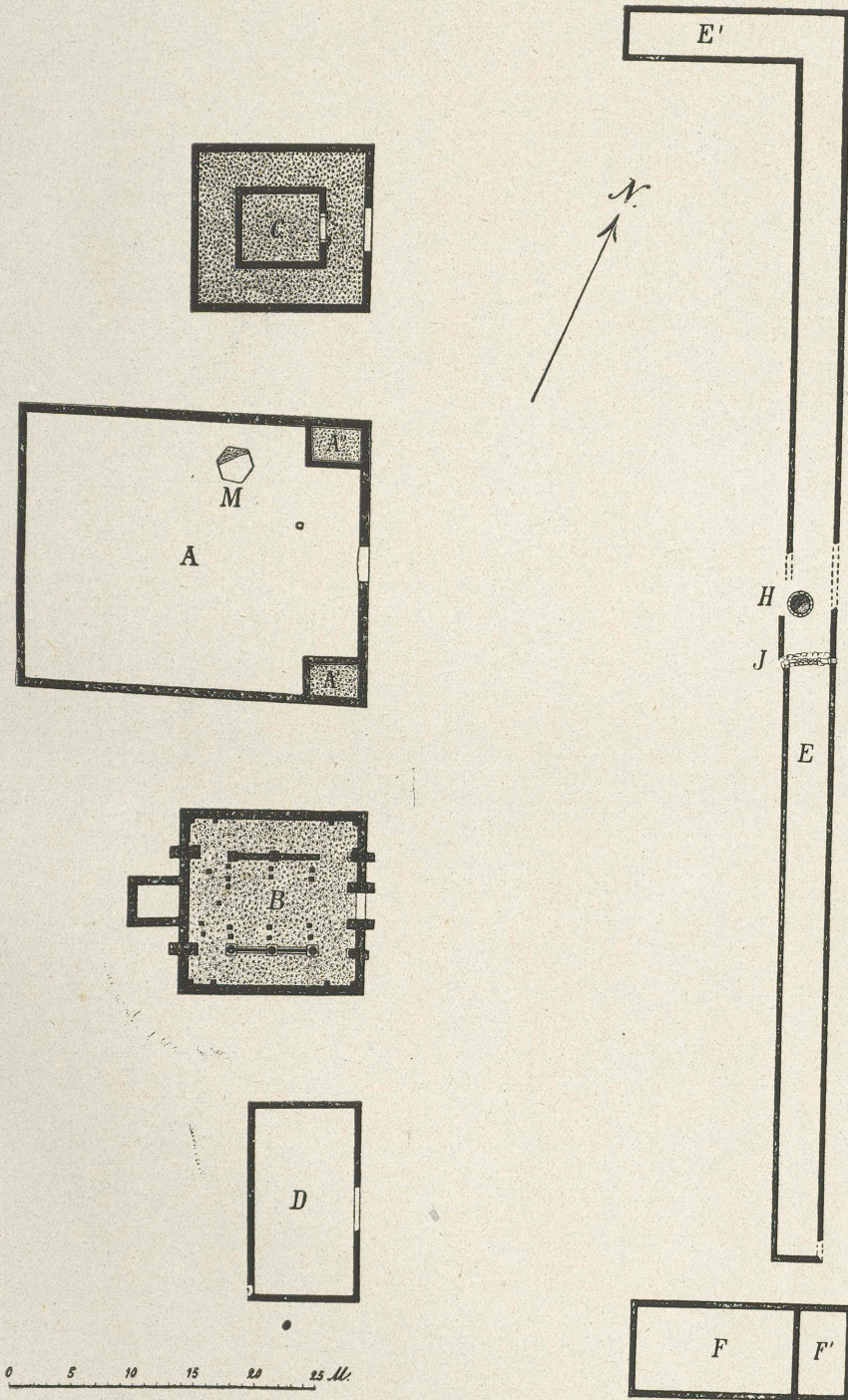






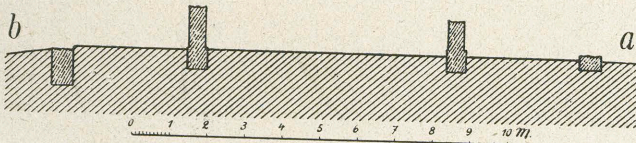
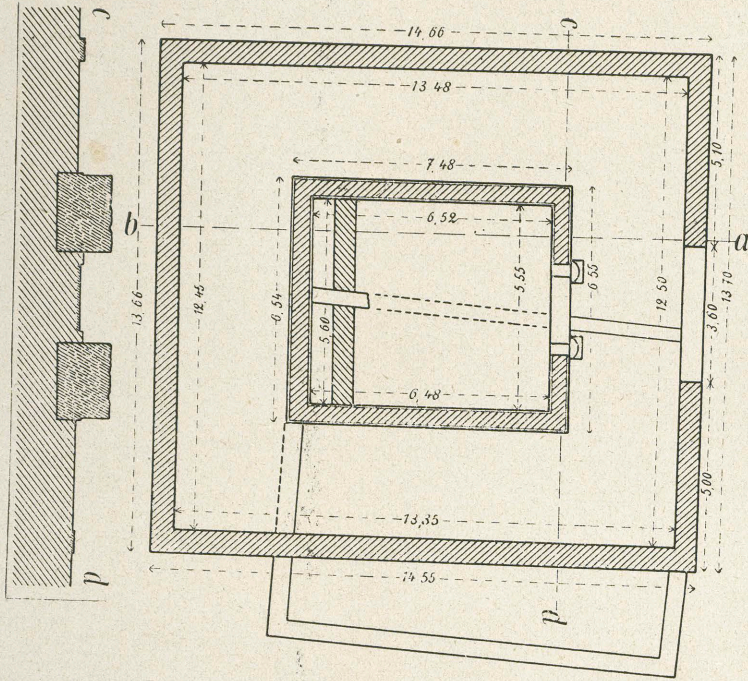
Tempelbezirk bei Pesch. Ältere Bauperioden.



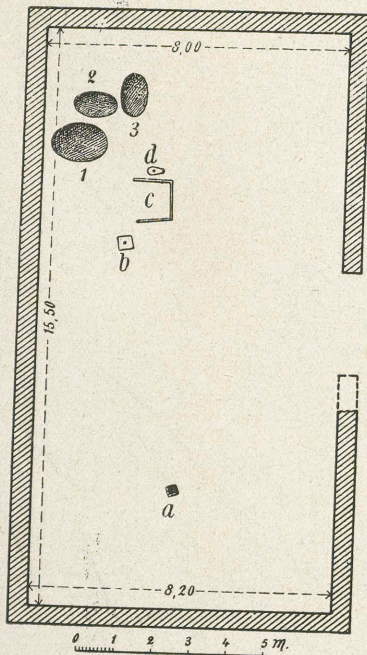


Tempelbezirk bei Pesch. Jüngste Bauperiode.



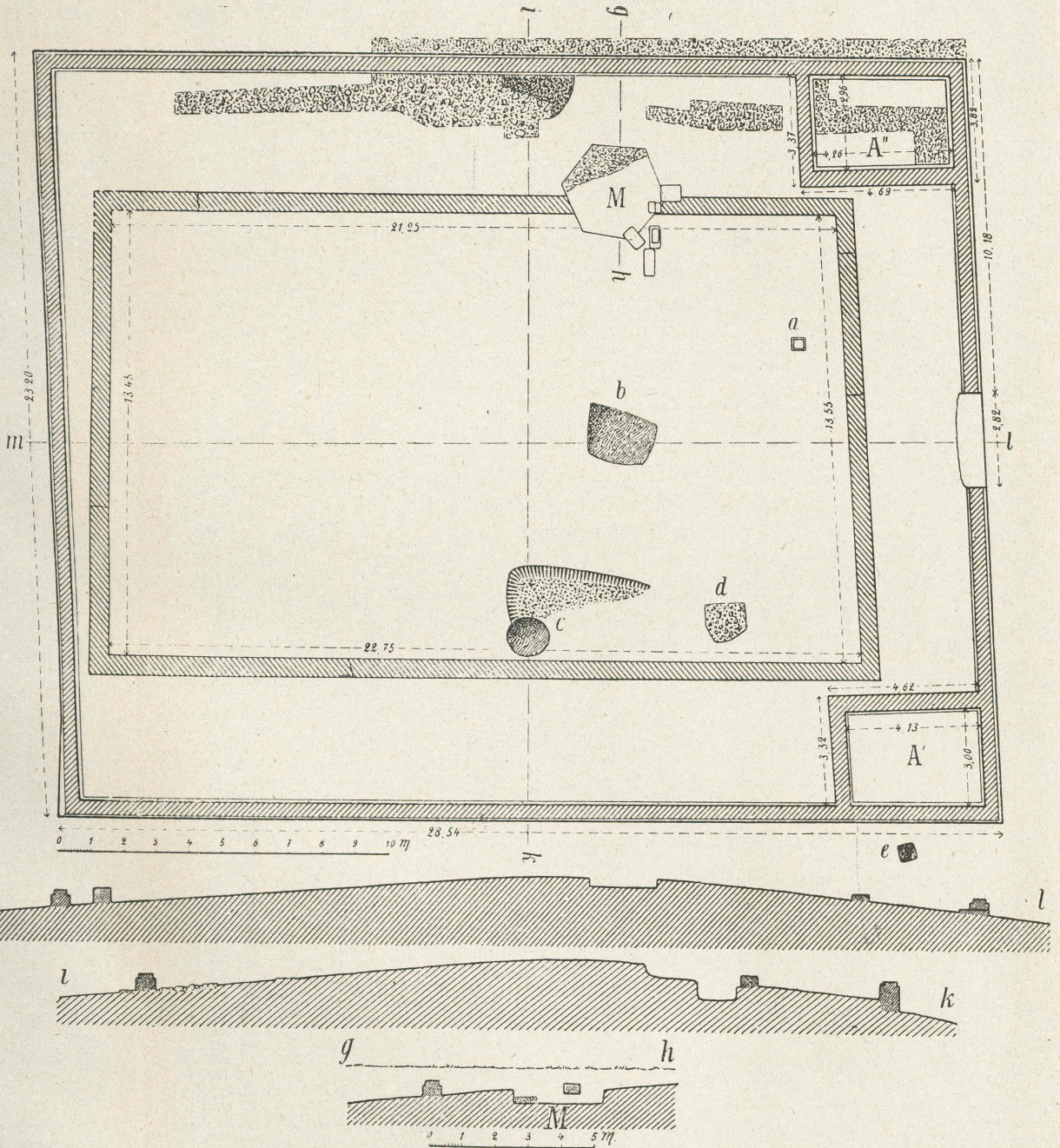


1. Tempel C bei Pesch.



2. Gebäude D bei Pesch.

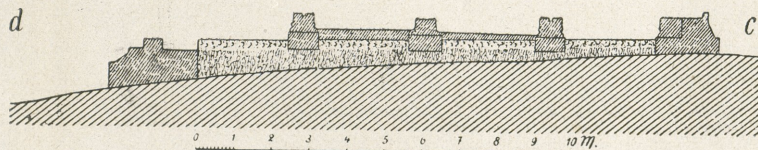
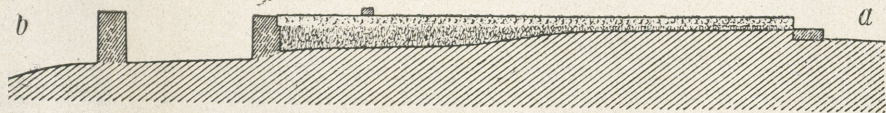
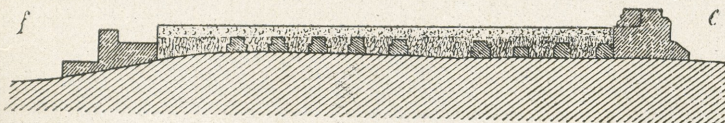
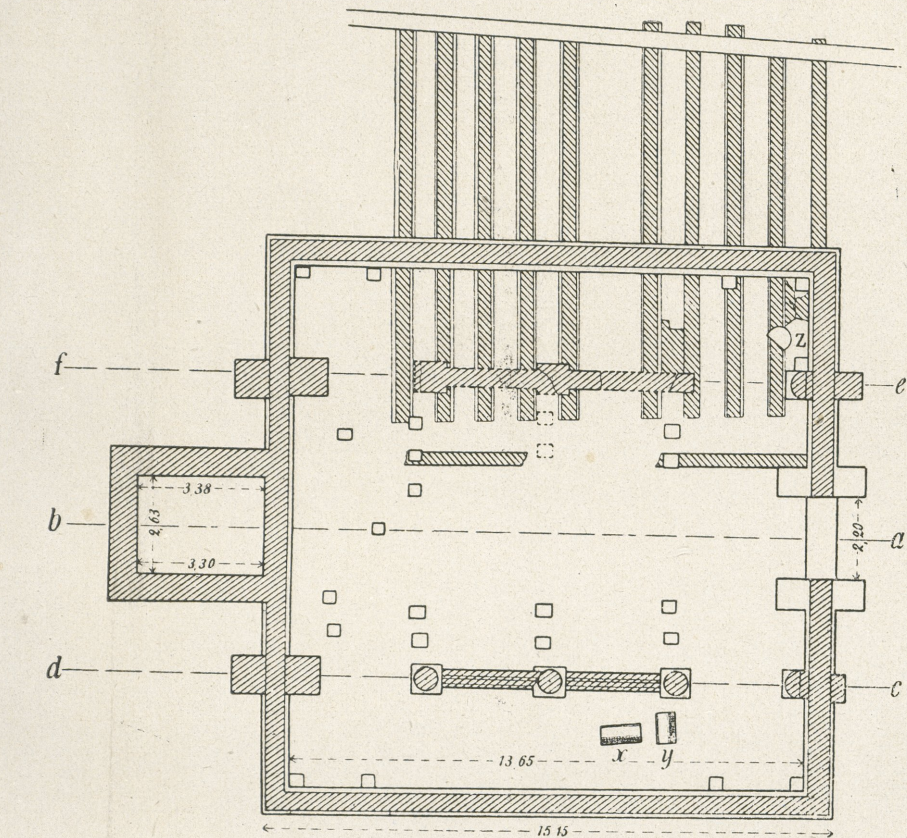




Tempelbezirk bei Pesch. Hof A und Sechseckbau M.







Tempelbezirk bei Pesch. Gebäude B und N.





1. Ältere Mauer und Anschüttung in A.



2. Sechseckfundament M und ältere Mauer A.  
Tempelbezirk bei Pesch.





1. Rostmauern von N unter B.



2. Rostmauern von N nördlich von B.  
Tempelbezirk bei Pesch





1. Tempel C, Cella.



3. Gebäude B. Blick von NW.



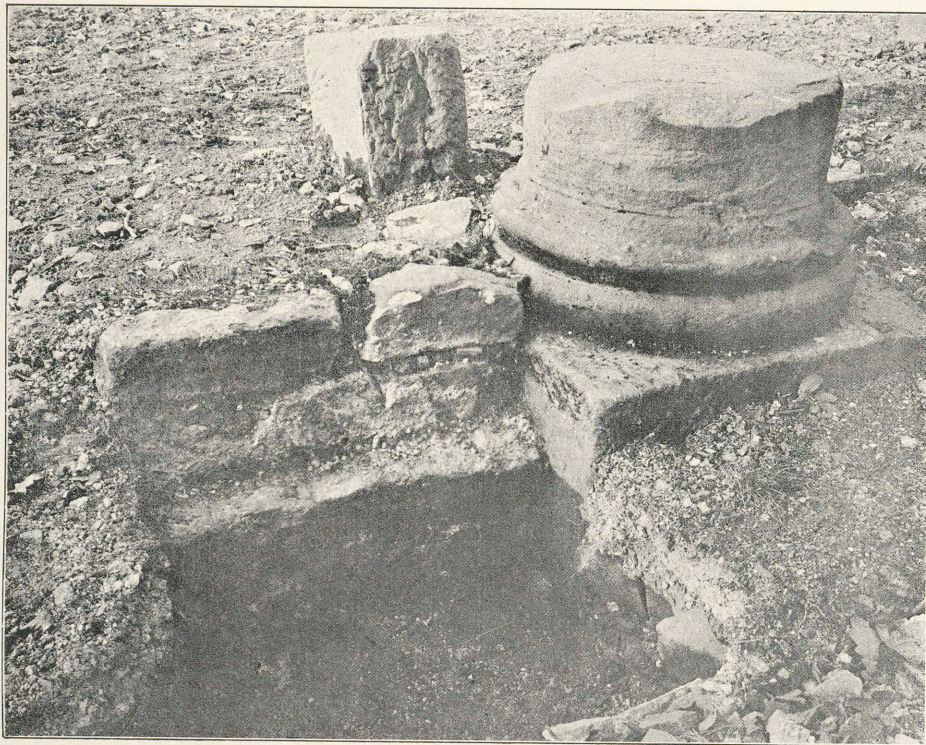
2. Tempel C, Eingang.



4. Gebäude B. Südliche Säulenreihe.







1. Gebäude B. Mittelsäule der südl. Säulenreihe.



3. Halbsäule in B.



2. Gebäude B. Östliche Säule der südl. Säulenreihe.



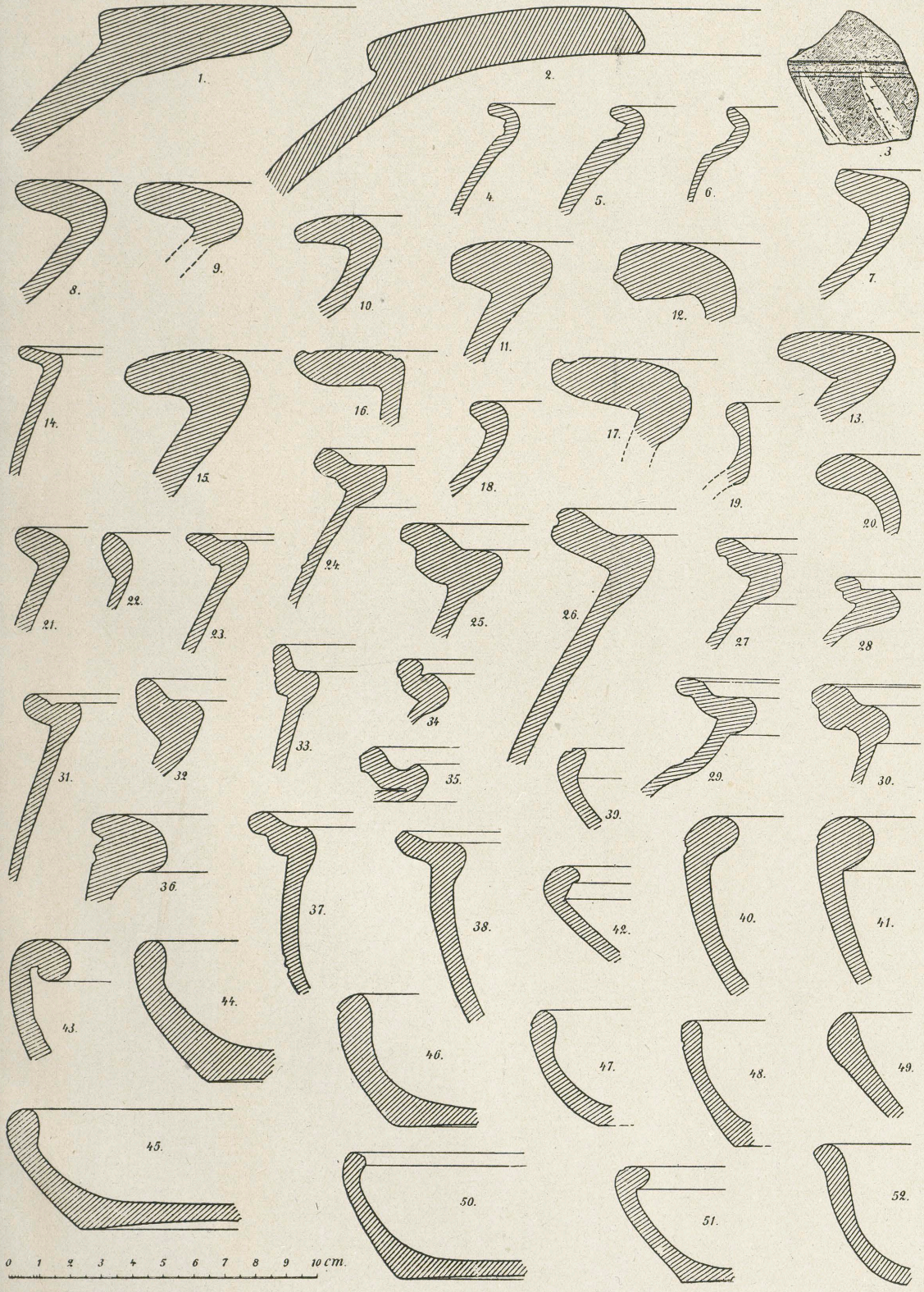
4. Einzelheiten im Gebäude D.





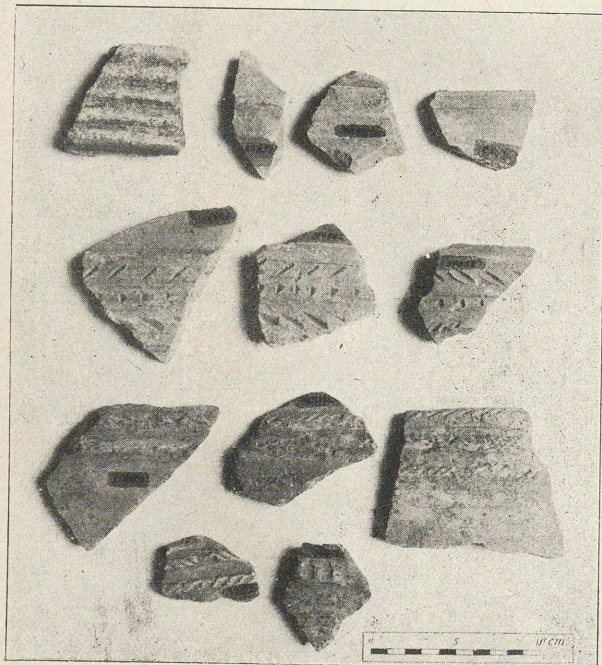
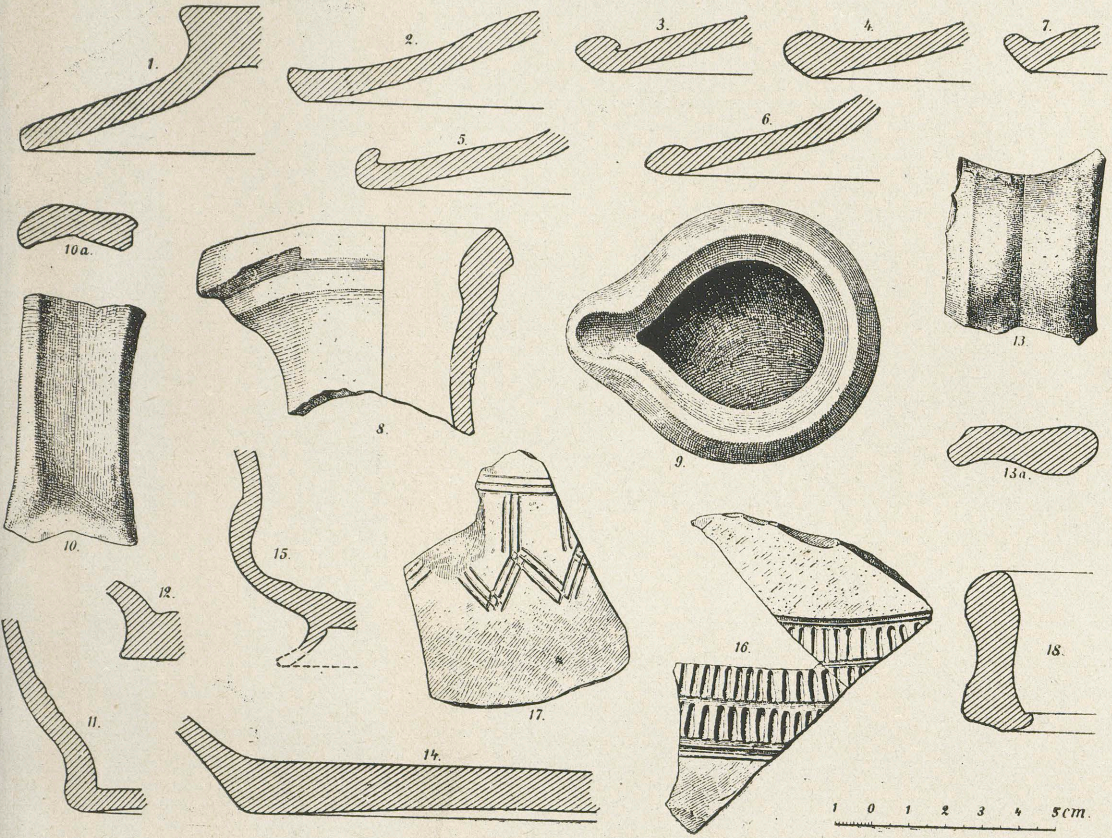
Keramik von Pesch.





Keramik von Pesch.

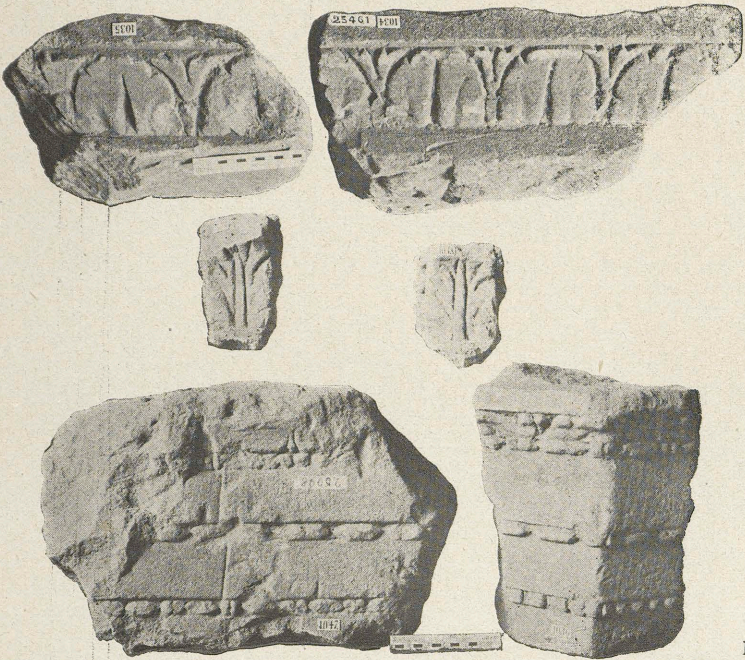




19  
Keramik von Pesch.







1



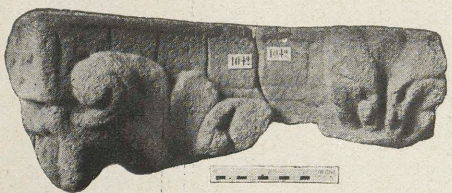
2



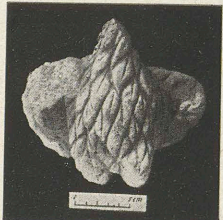
3



4



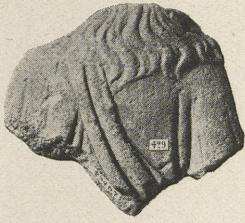
6



5

Architektur- und Skulpturreste von Pesch.





2



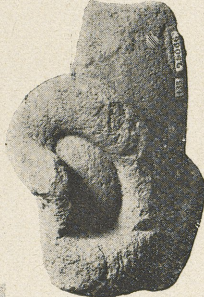
1



3



4



5



6



7



8



9



10



11



12

Skulpturreste von Pesch.

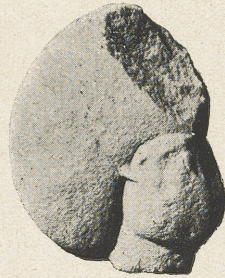




1



2



3



4



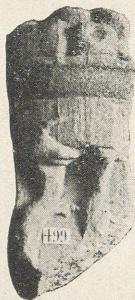
5



6



7



8



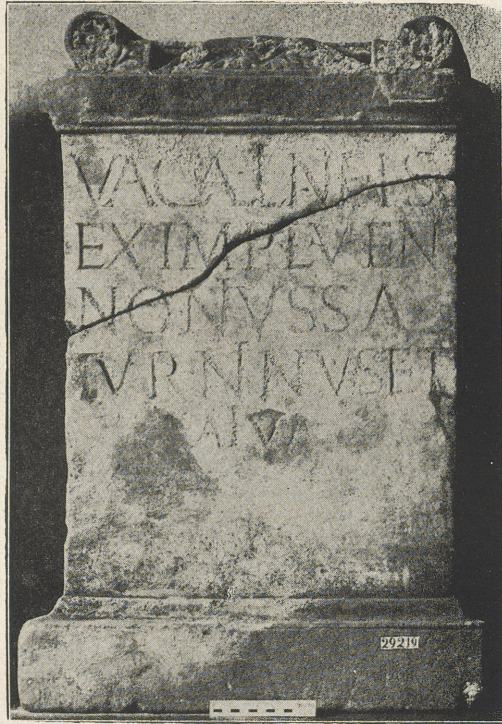
9

Skulpturreste von Pesch.

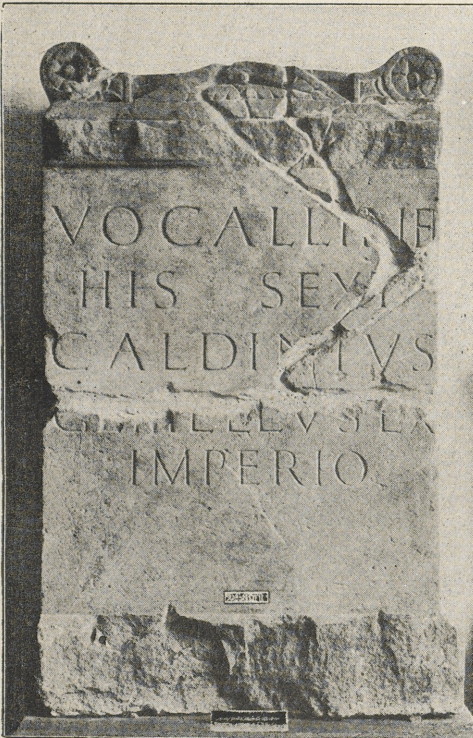




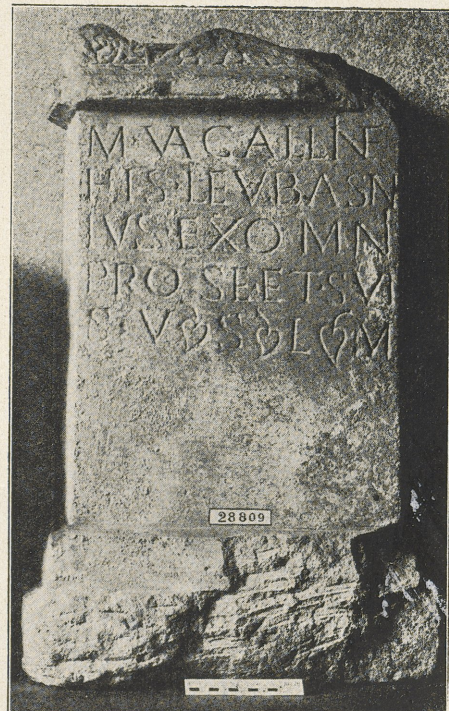
1



2



3



4





1

2

3



4

5

6, 7



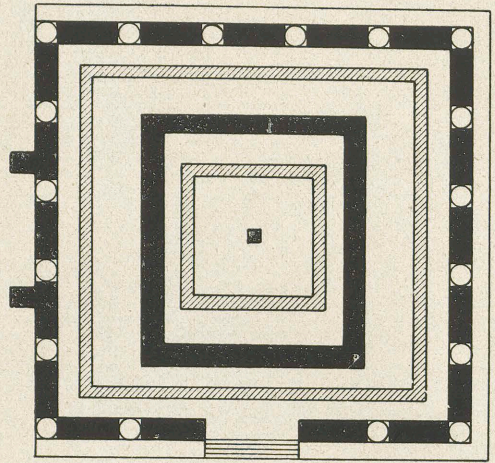
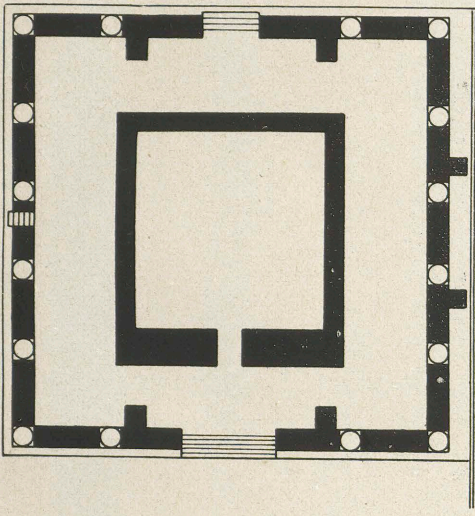
8



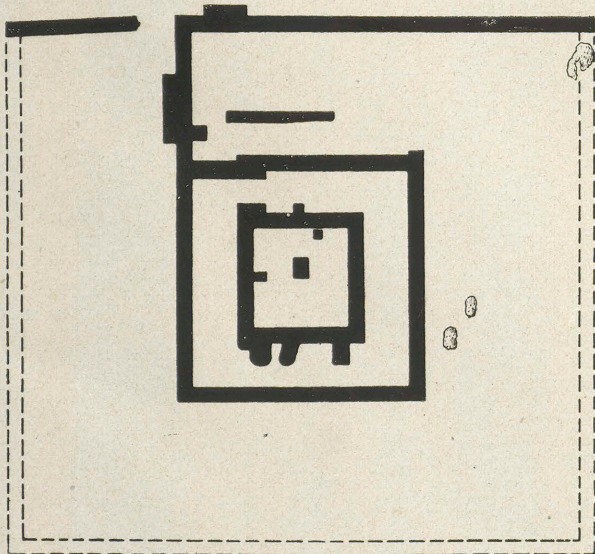
9

Altäre von Pesch.

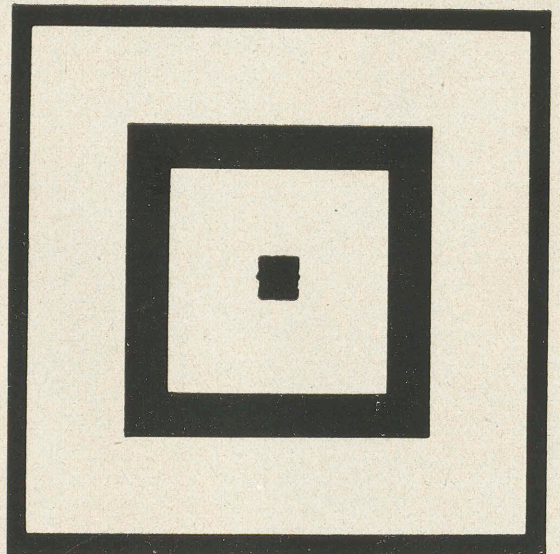




1. Doppeltempel von Champigny lès Langres (nach Babelon und Vesly).

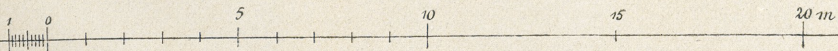
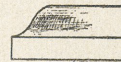
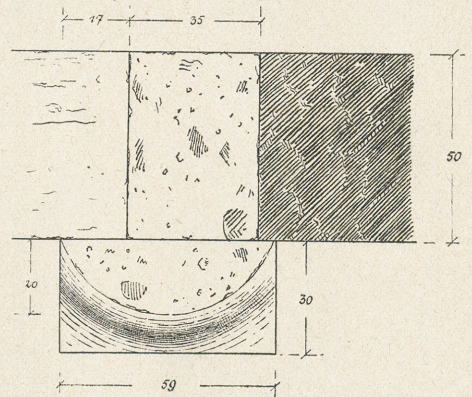
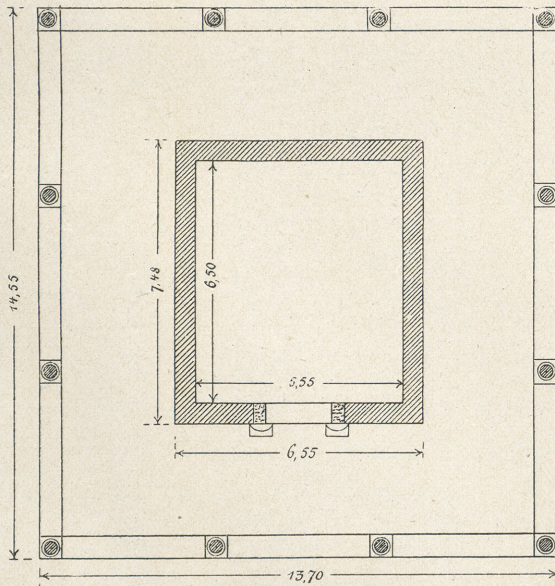
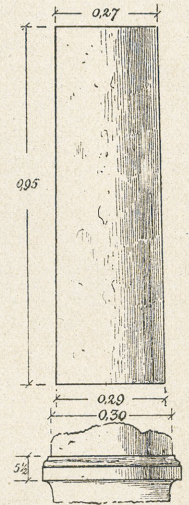
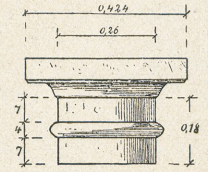
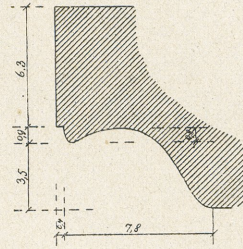
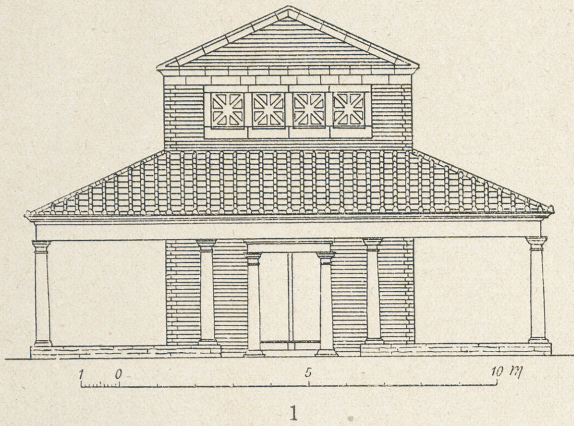


2. Tempel bei Andernach  
(nach Schwab, Andernacher Bericht 1913-16).



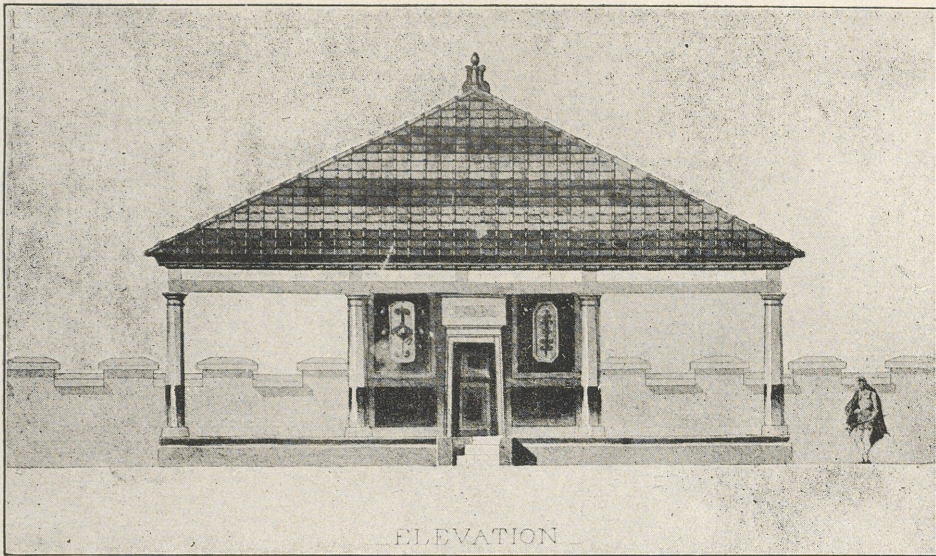
3. Sog. Janustempel bei Autun  
(nach Fontenay, Autun).



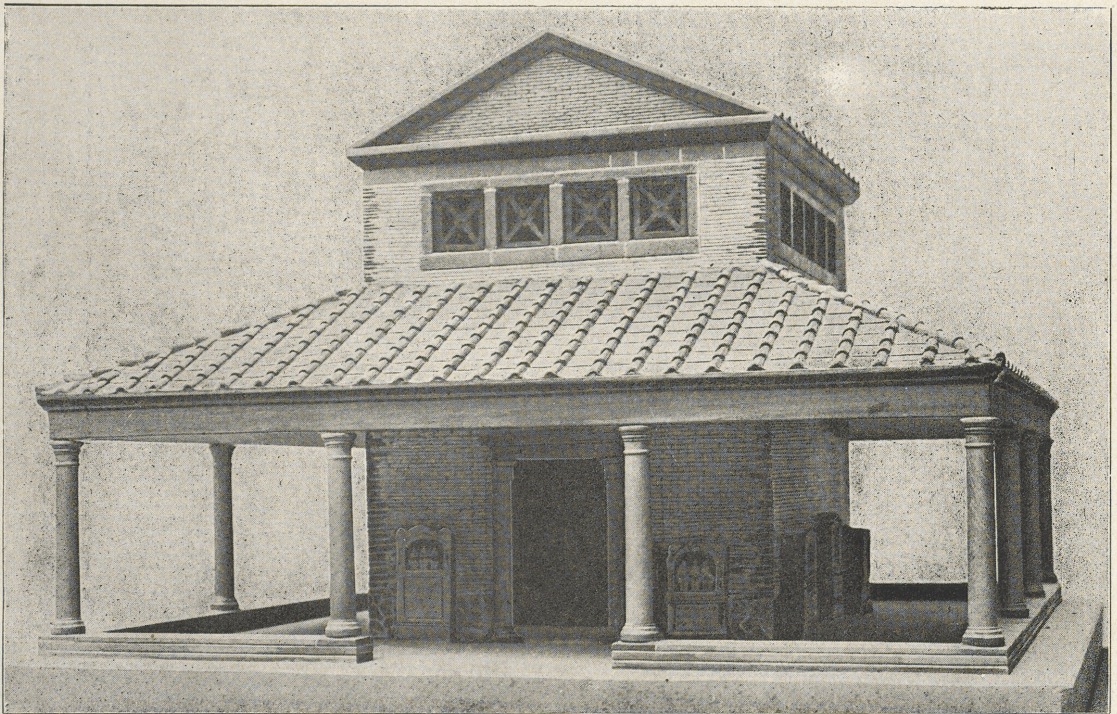


Tempel C bei Pesch. Rekonstruktion von Schultze und Einzelheiten.





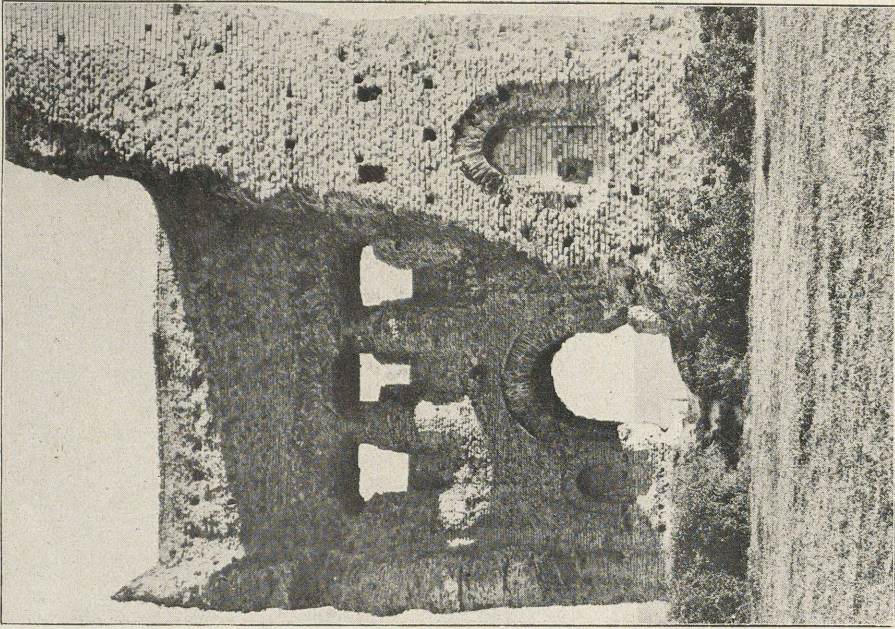
1. Rekonstruktion des Tempels von Buis nach Vesly, Les Fana Taf. X und XI.



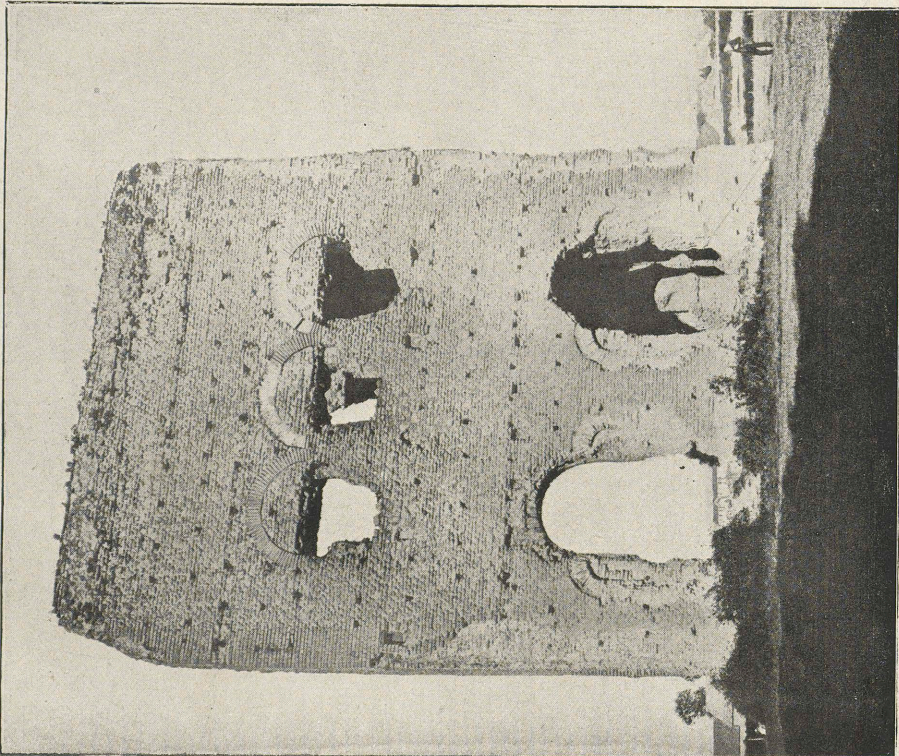
2. Rekonstruktion des Tempels C von Pesch nach Schultze. (Modell von K. Menser.)







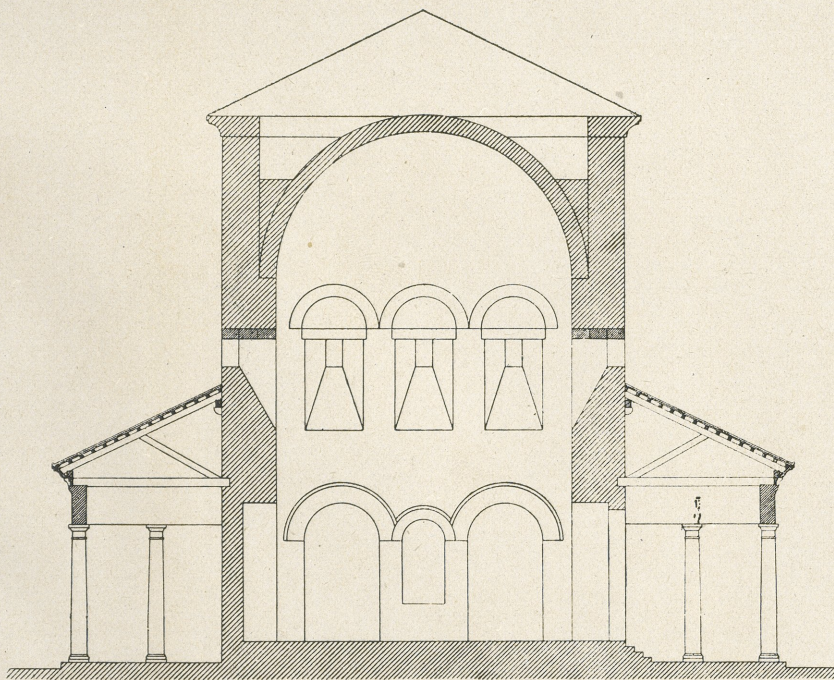
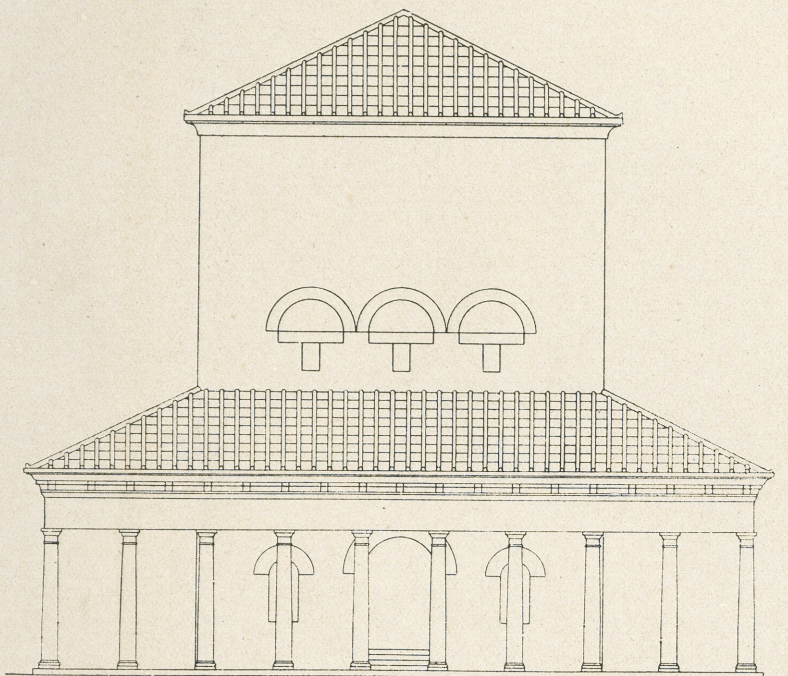
2. Innenansicht



1. Aussehenansicht

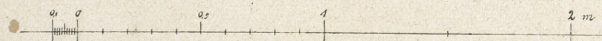
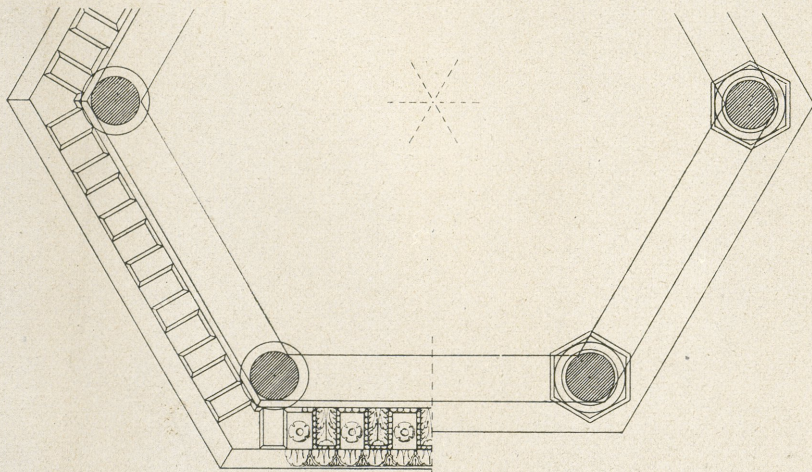
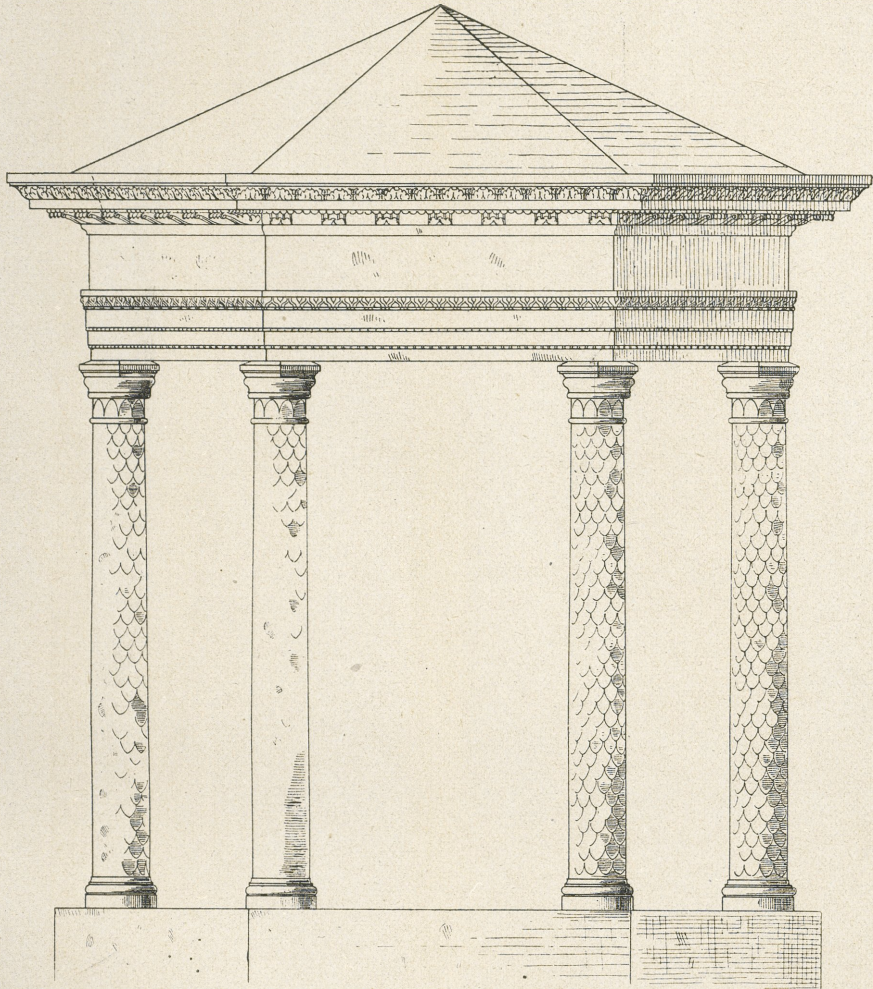
des sog. Janustempels bei Autun.





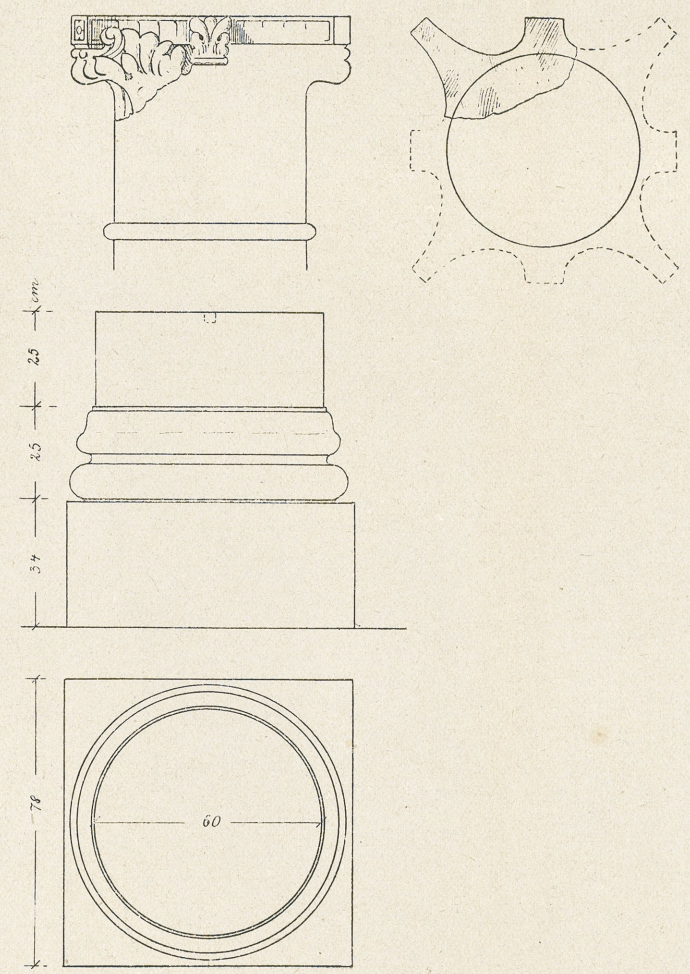
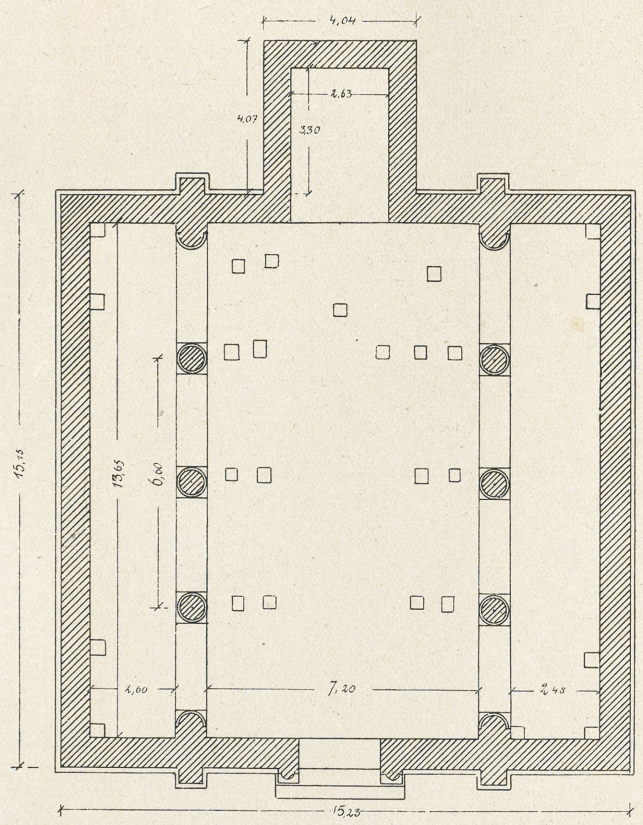
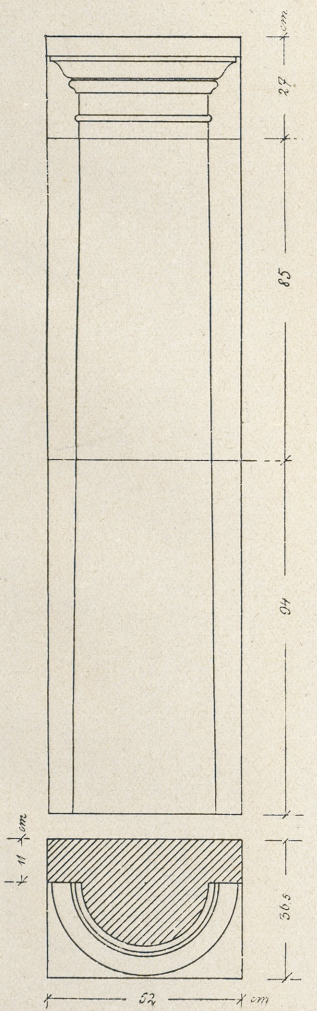
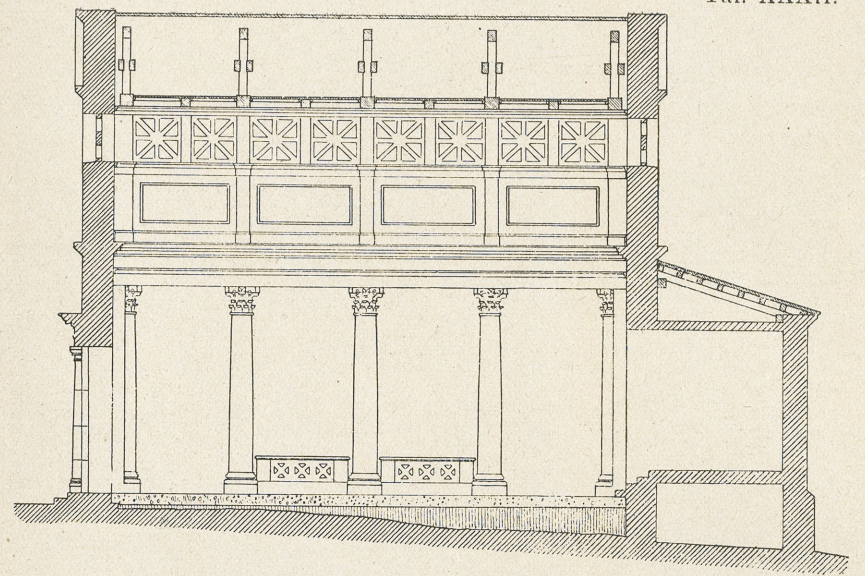
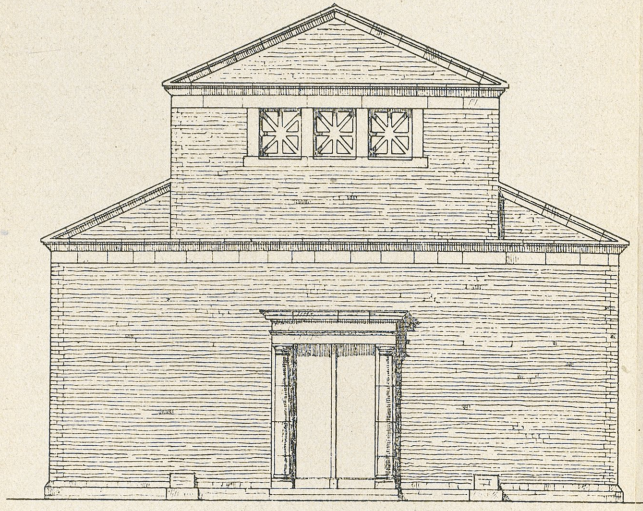
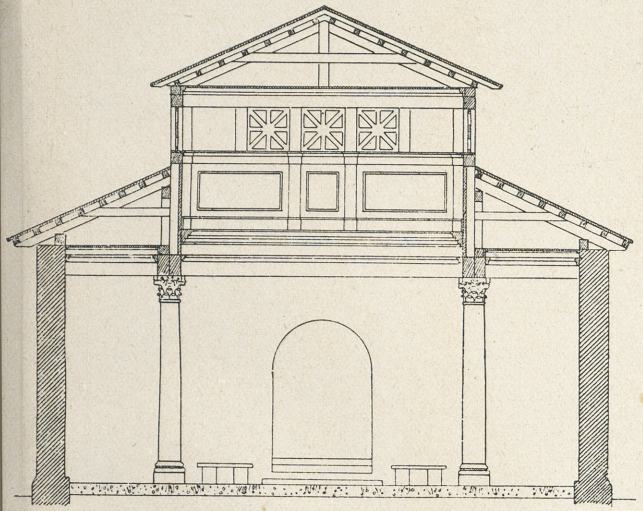
Sog. Janustempel bei Autun. Rekonstruktion von Schultze.





Monopteros M bei Pesch. Rekonstruktion von Schultze.

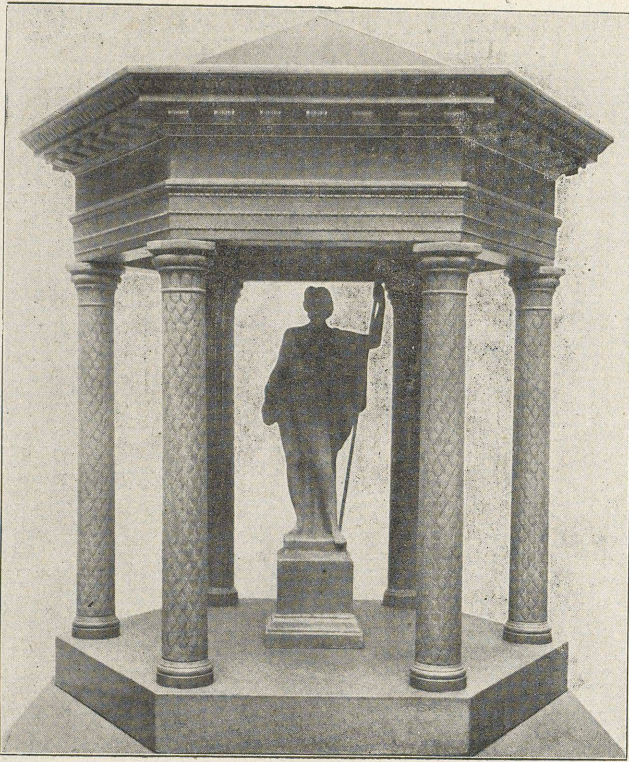




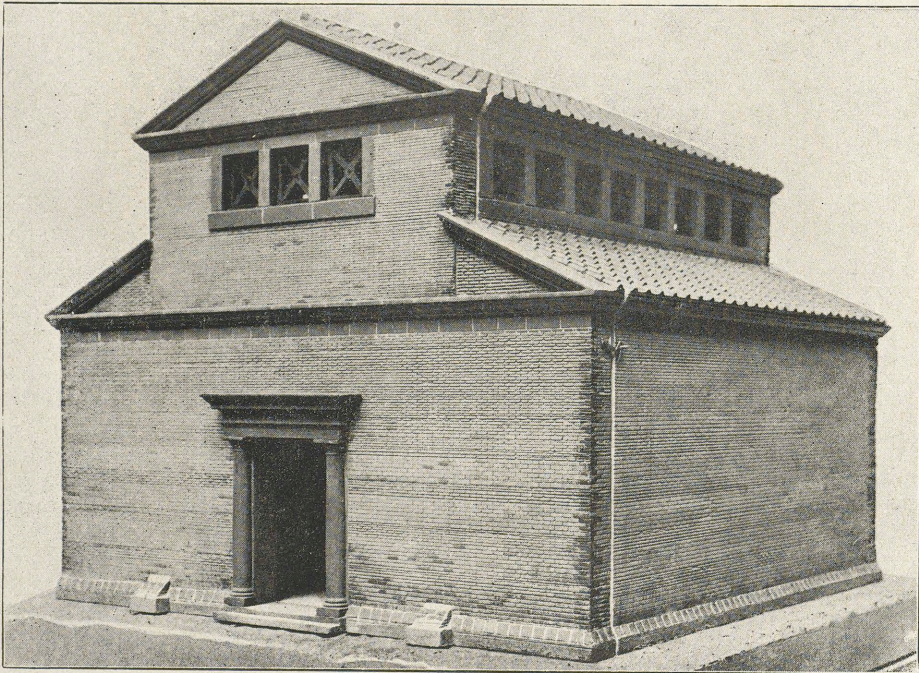
Gebäude B bei Pesch, Rekonstruktion von Schultze und Einzelheiten.





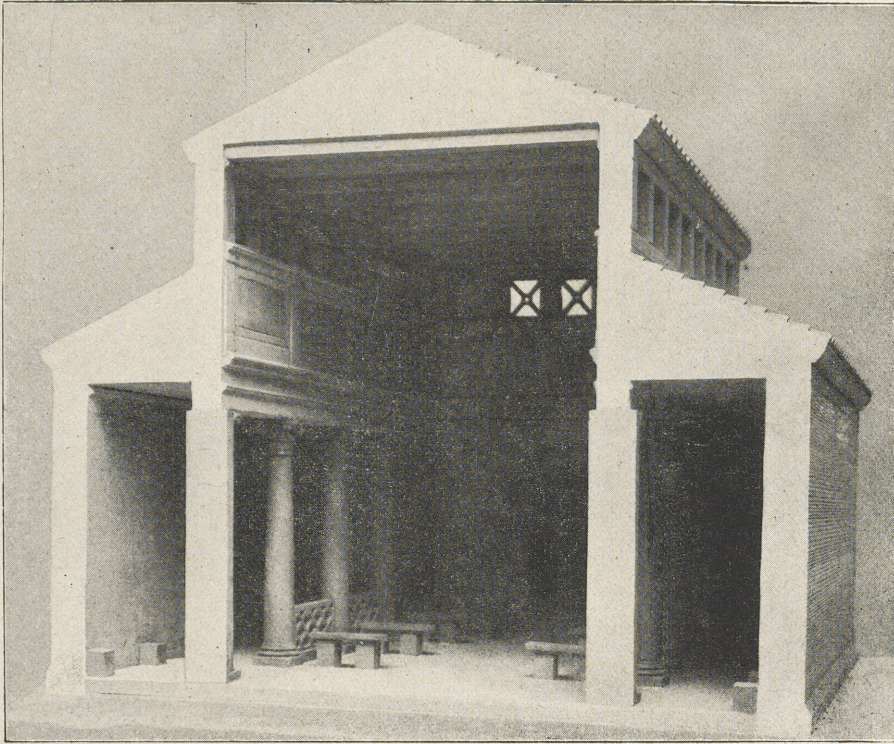


1. Monopteros M bei Pesch (Modell von Menser).

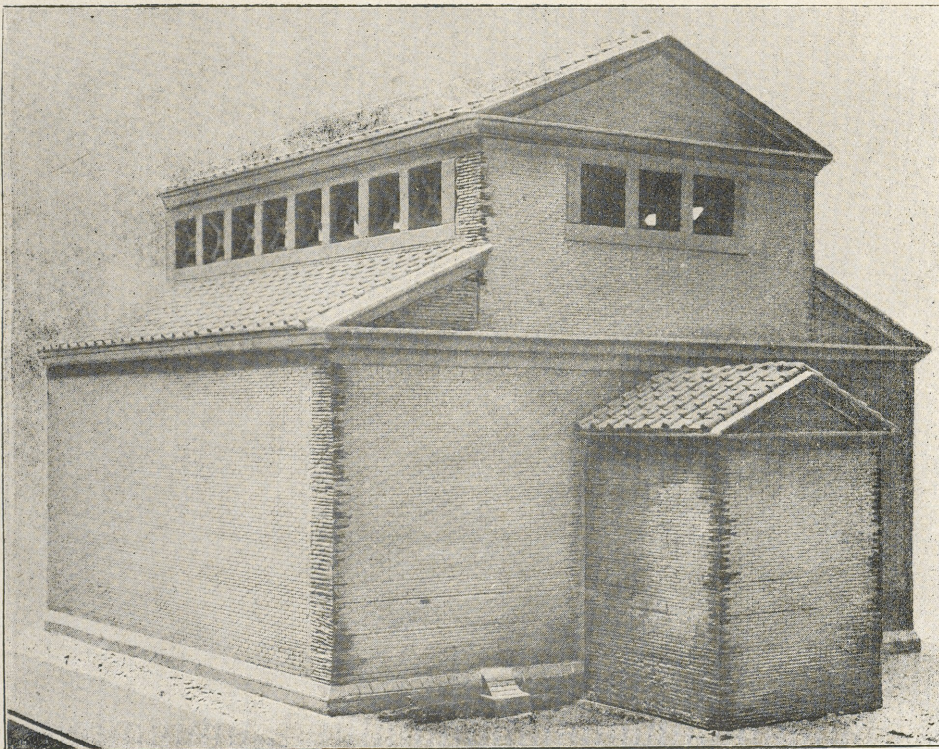


2. Vorderseite von B (Modell von Menser).



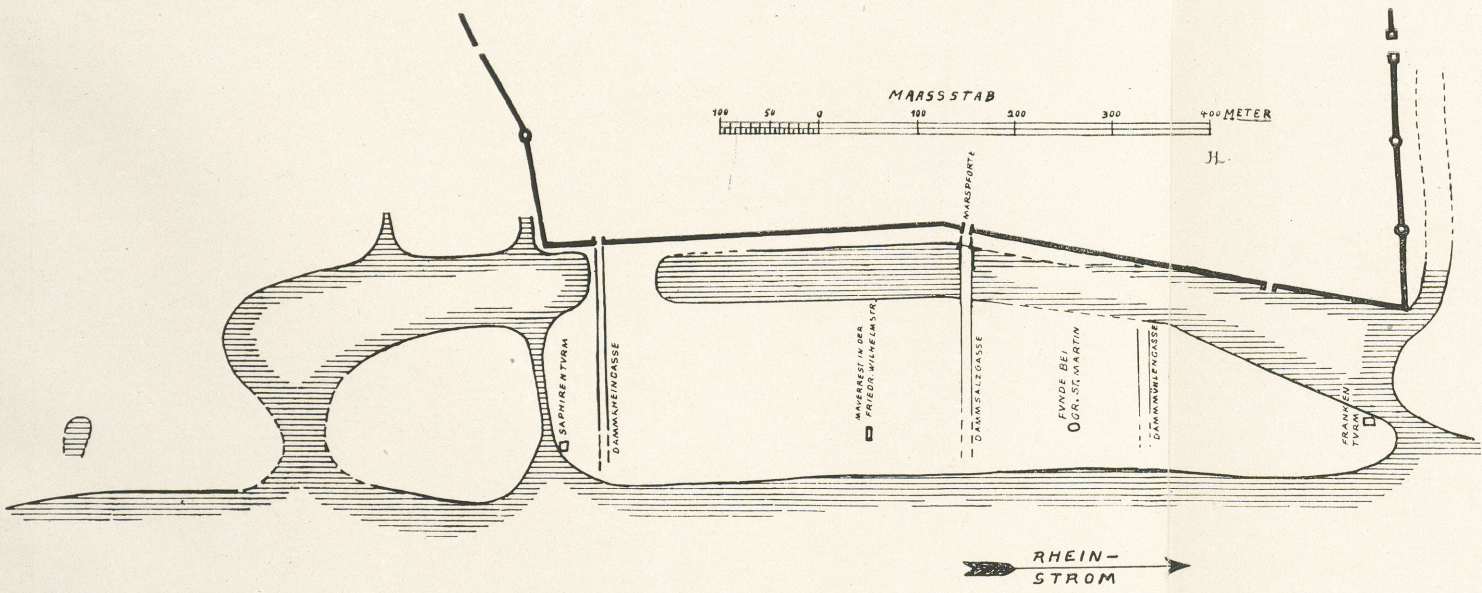
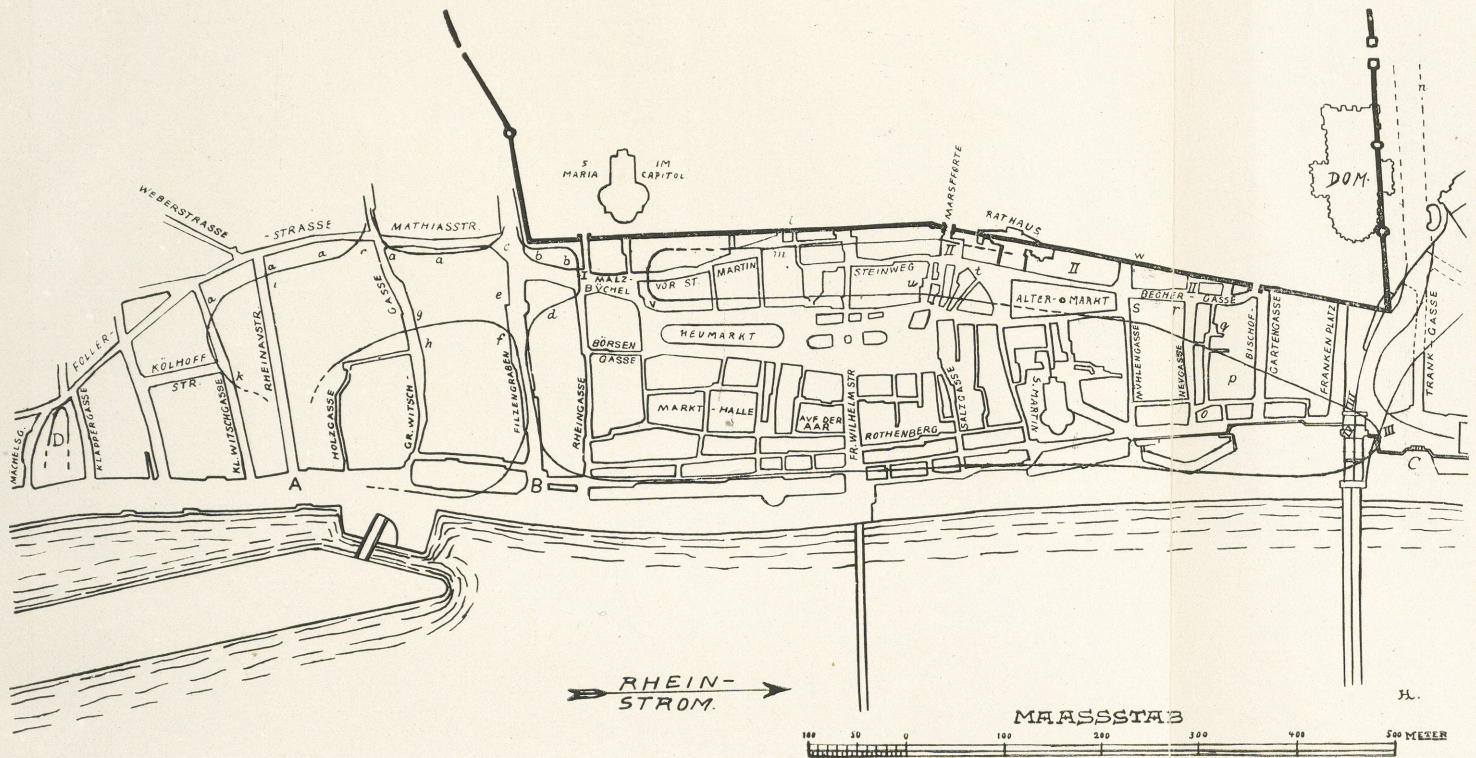


1. Blick ins Innere von B (Modell von Menser).



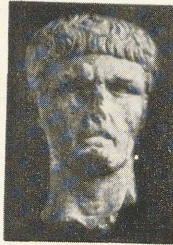
2. Rückseite von B (Modell von Menser).



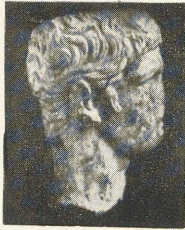


Der römische Hafen von Cöln.





1.



2.



*Agrippa.*

3.

*Drusus.*



1.

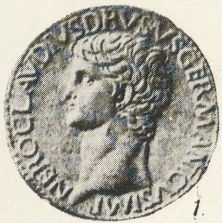


2.

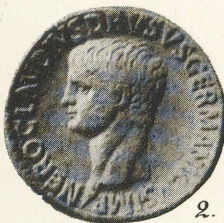


3.

*Agrippa.*



1.



2.



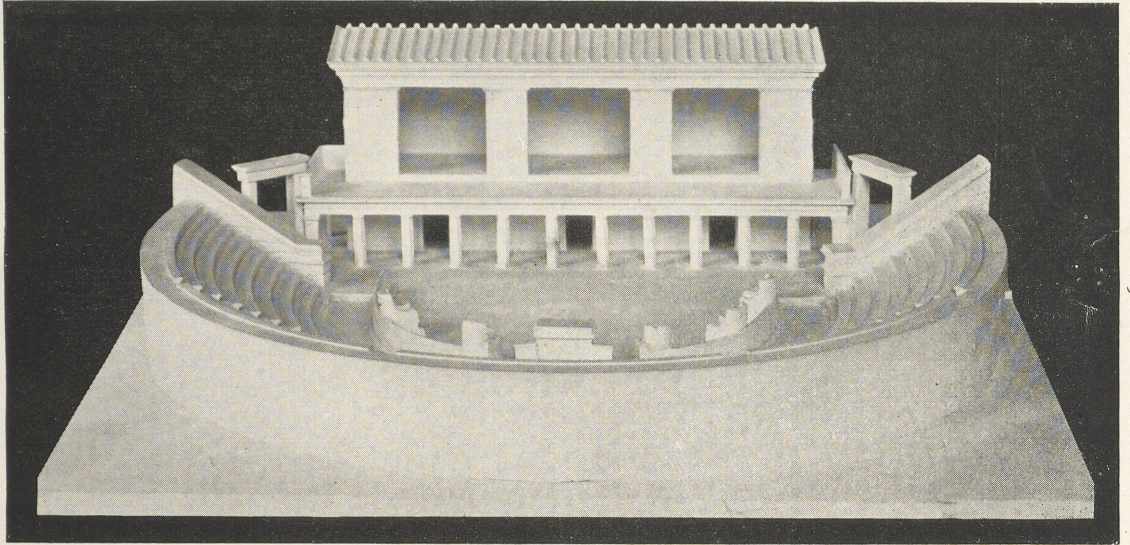
3.

*Drusus.*

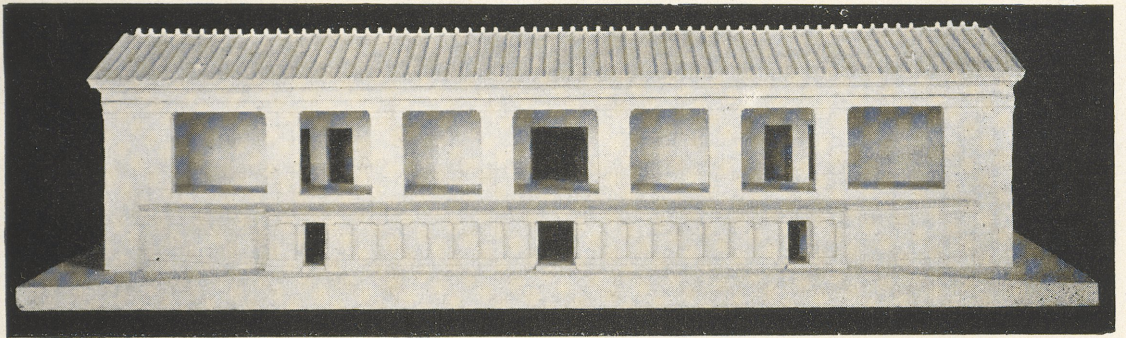
Der Marmorkopf vom Klettenberg in Cöln.



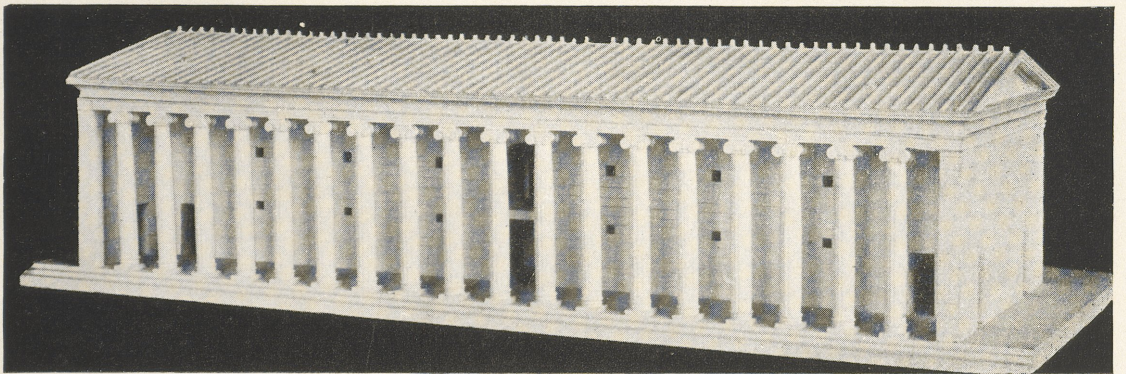




1



2



3

Modelle hellenistischer Bühnengebäude.

1. Priene (frühhellenistisch), 2. und 3. Ephesos (späthellenistisch).  
(Nach Prof. E. Fiechter, vgl. S. 200 Anm. 2).