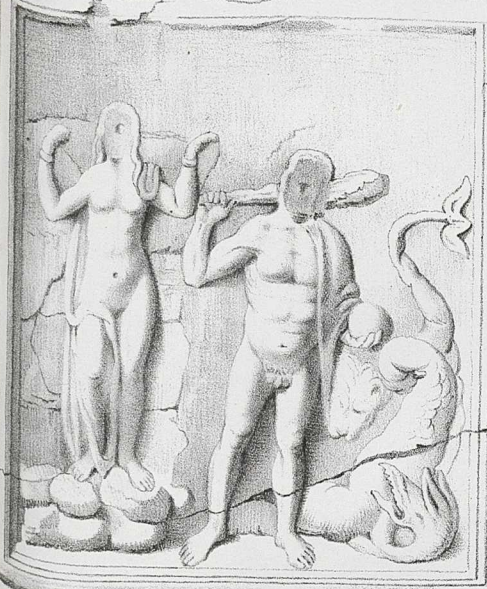
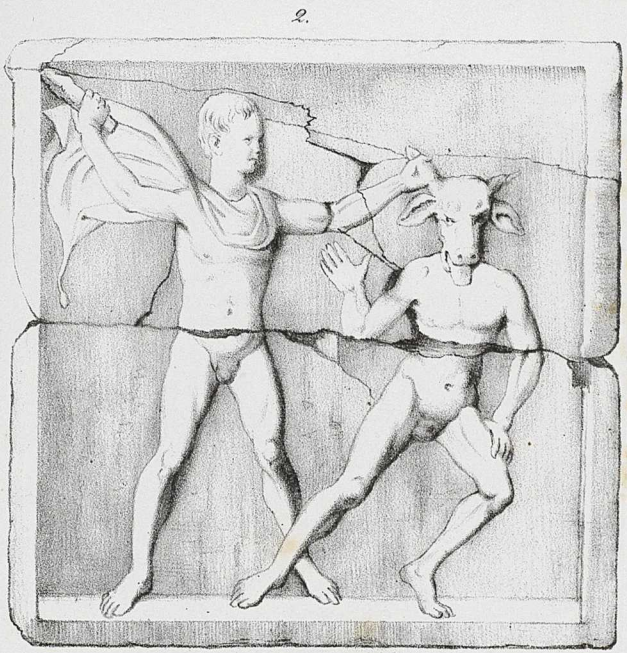
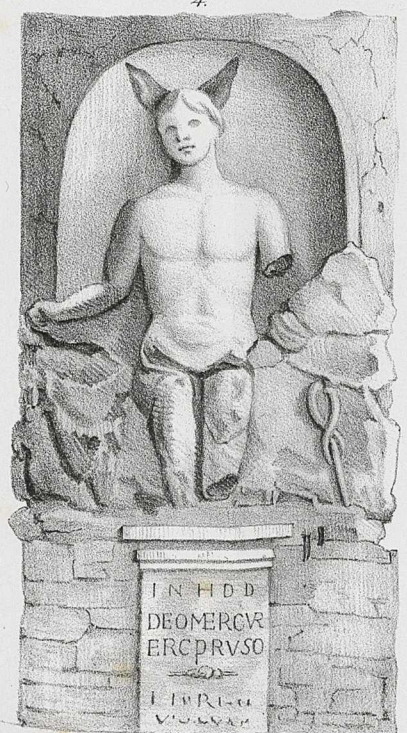
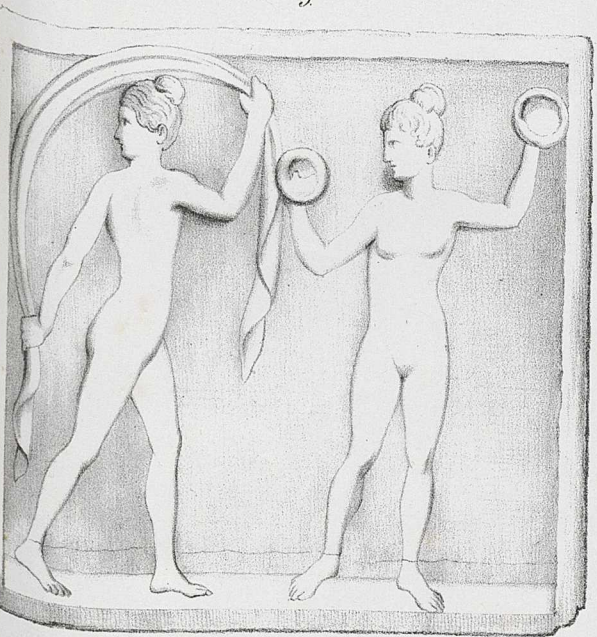
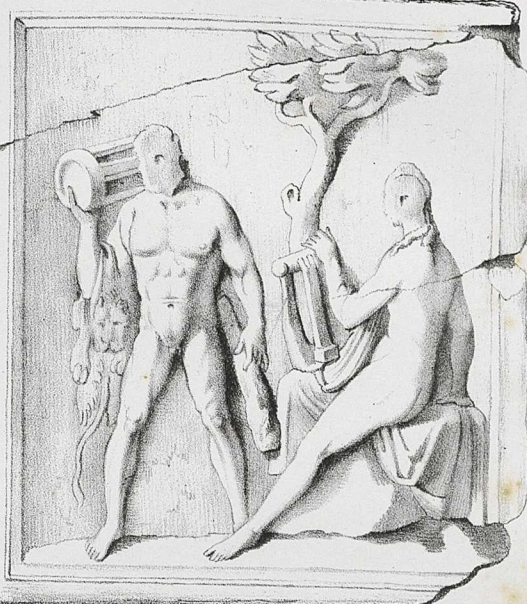


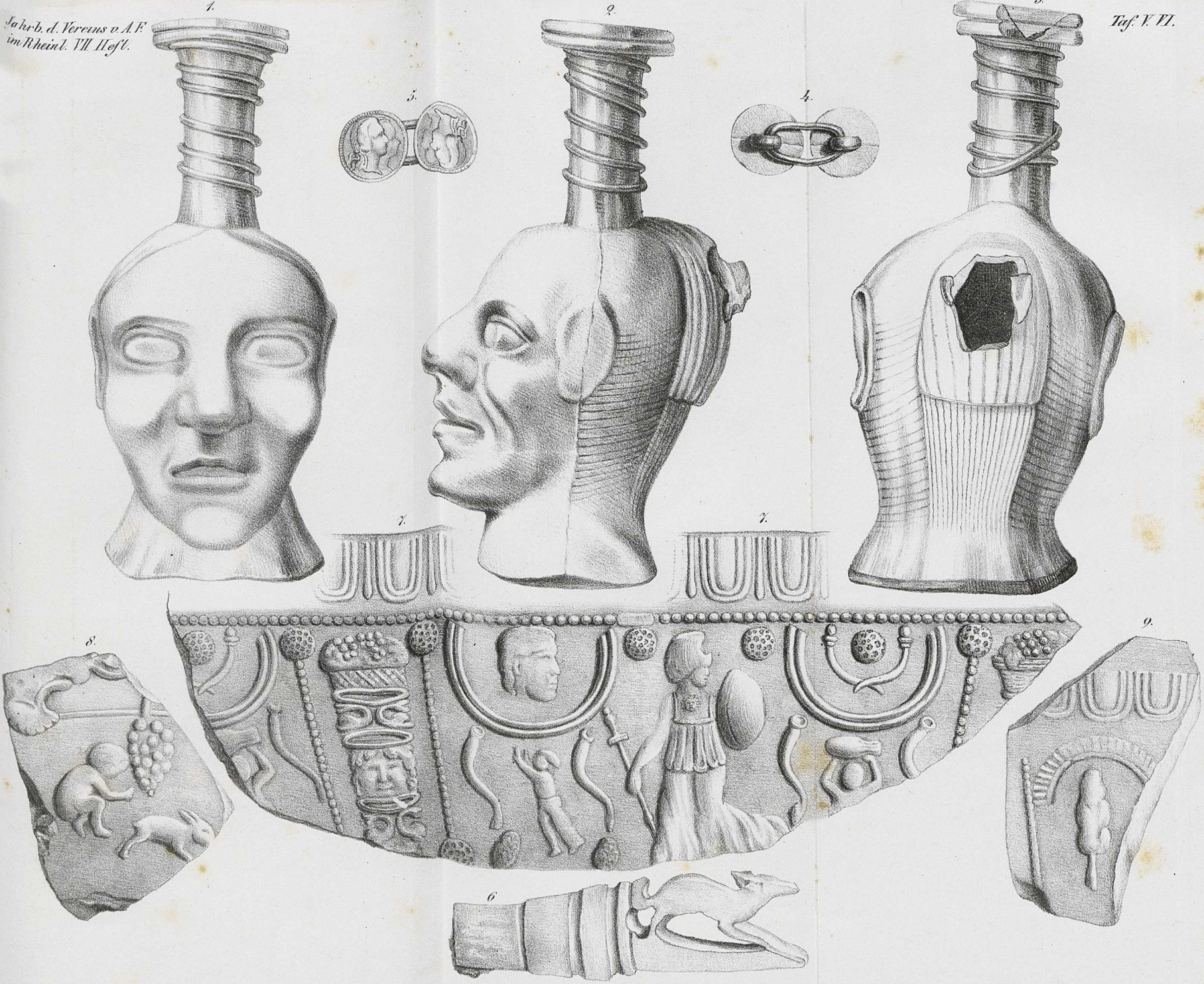
Altthümer in Nimwegen (1.2) Neafr (6.7.8) und Trier (3.4.5)



D M

C·SEVERINIOVTEALI·VET·ERANO  
 HONESTEMMISSIONIS EX·BFCOS  
 LEG·XXXVV SEVERINA SEVERINA  
 FILIA PARIKARISSIMO AD SEREN  
 EVITALINIO HILARIO NE LIBERTO  
 FAC IVNDVM CVRAVIT.





Alterthümer aus Cöln (1, 2, 3. Glas) 4, 5, 6) Bonn (7) und Reßum (8, 9.)