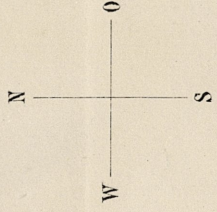
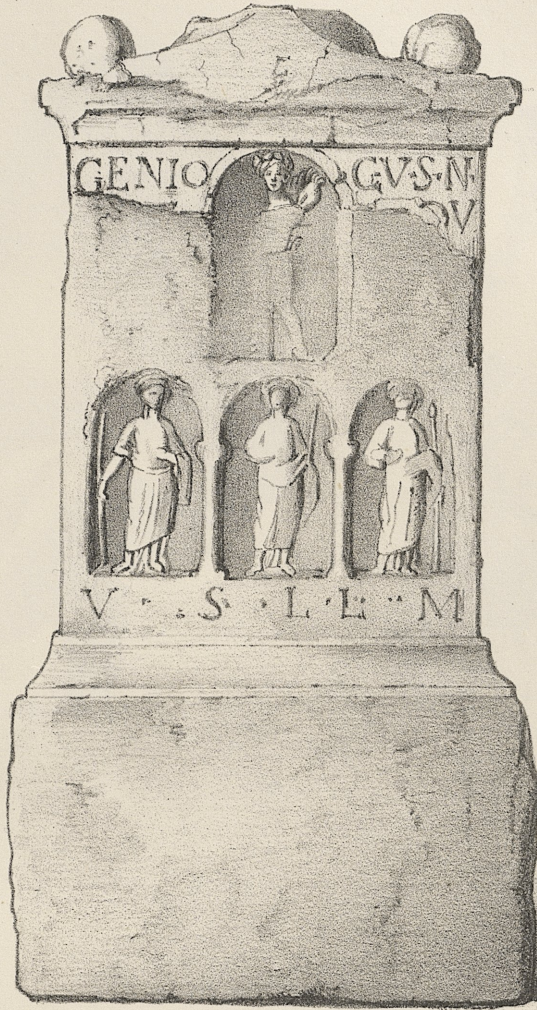


Situationskarte
z. u.
STADT LADENBURG



- Römische Bäderanlagen
- Römische Sculpturen und Inschriftensteine
- Altäre und kleine Antiquitäten

1.



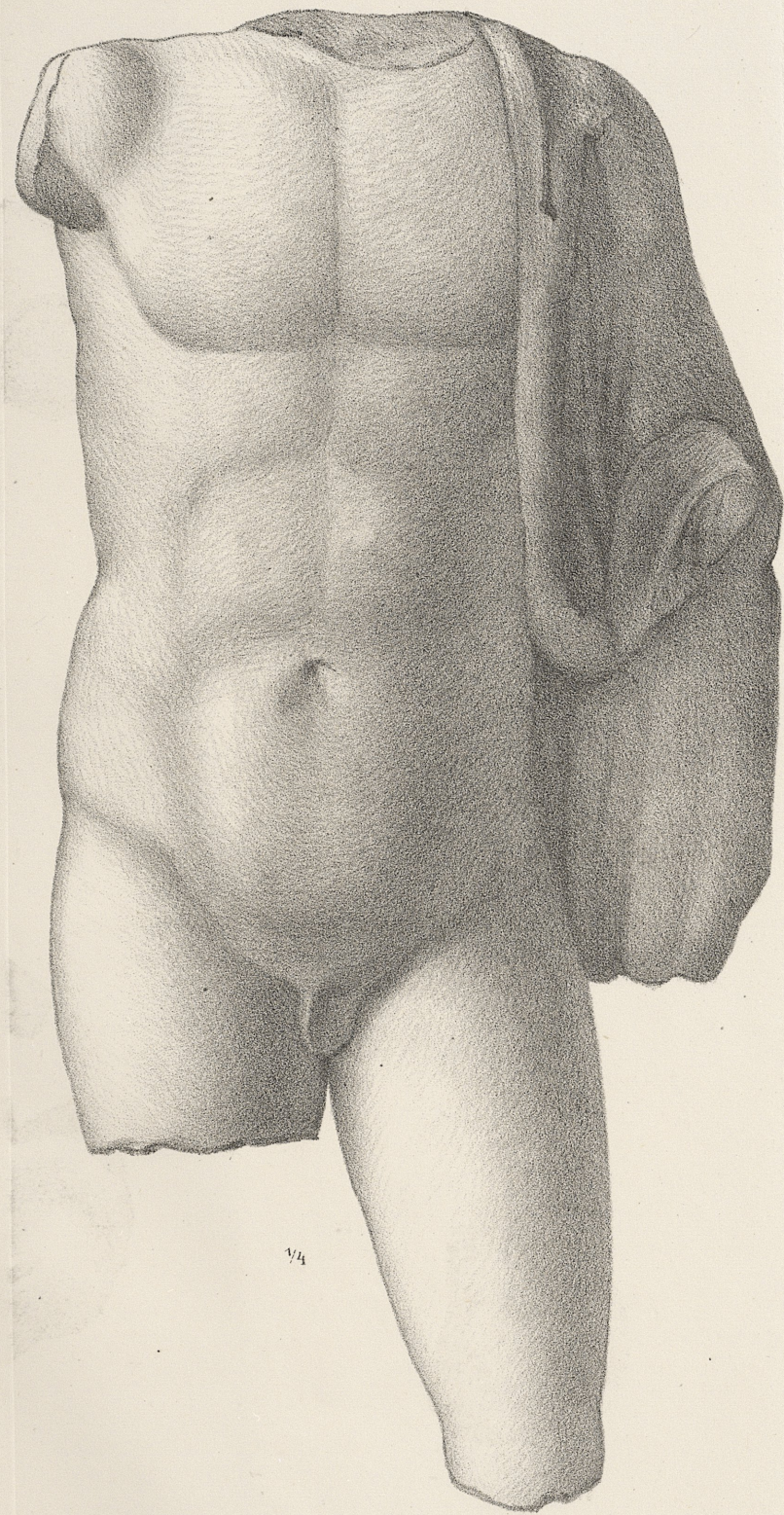
2.

$\frac{1}{4}$



$\frac{3}{8}$

5.



1/4

4.



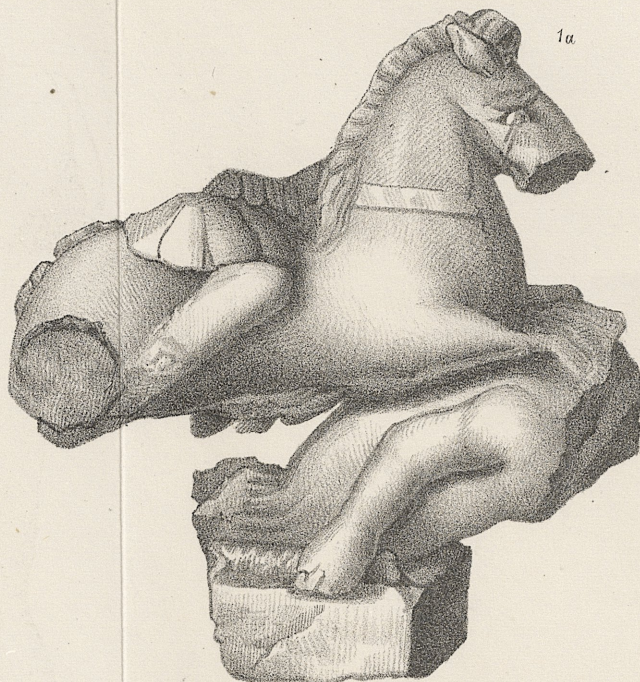
1/3

2.



1/4

1a.



1/6

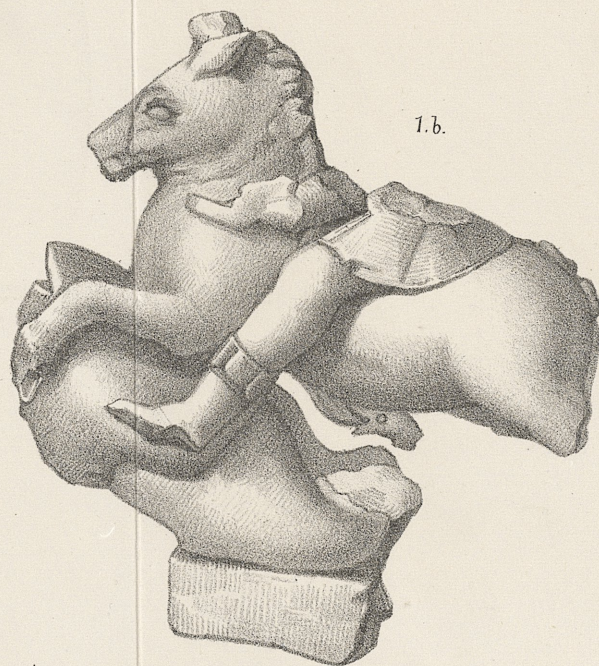
1.

1c.



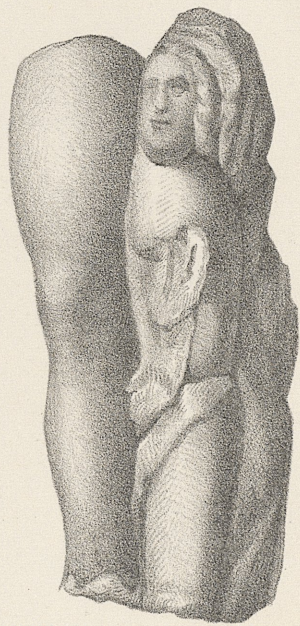
1/6

1.b.



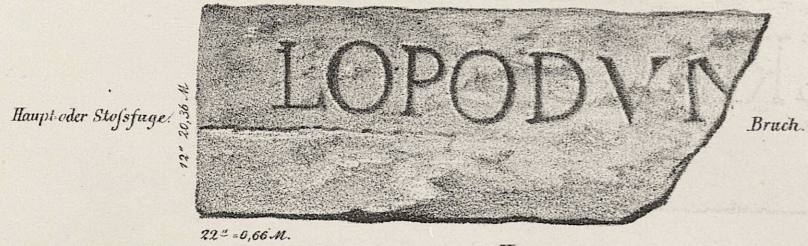
1/6

3.

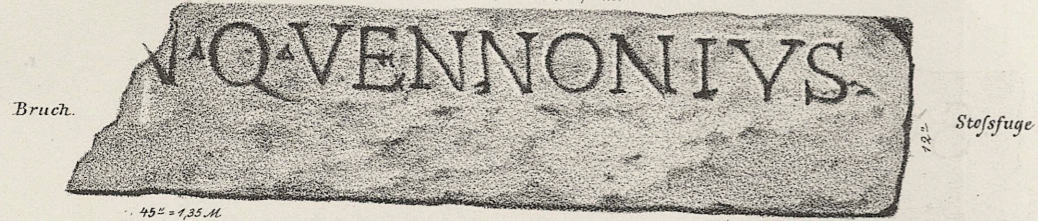


1/4

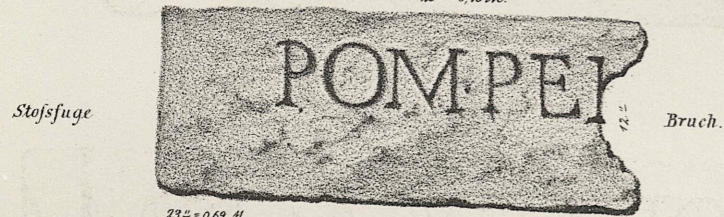
I.
28" Bad. M. = 0,84 M.



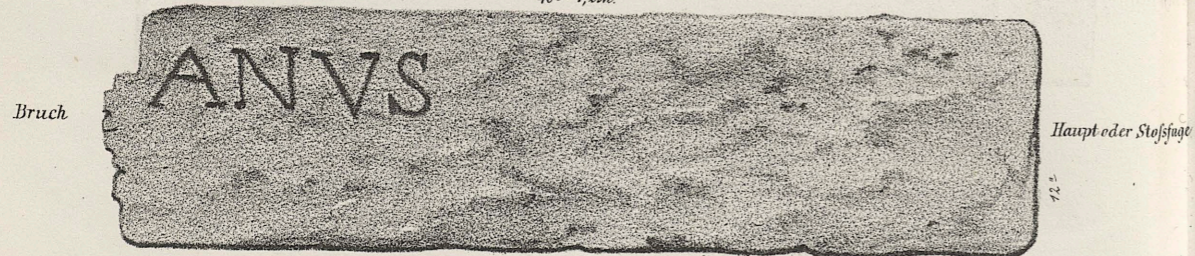
II.
38" Bad. M. = 1,14 M.



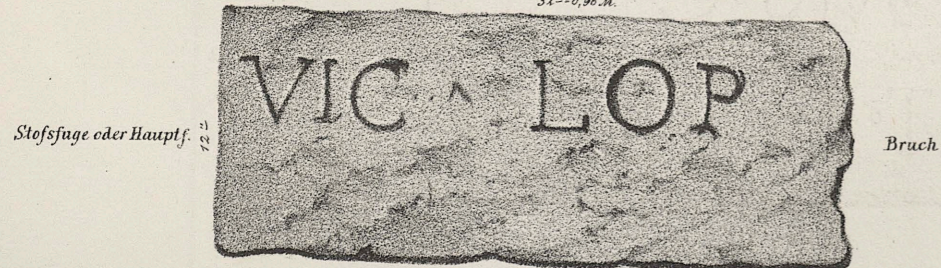
III.
25" = 0,75 M.



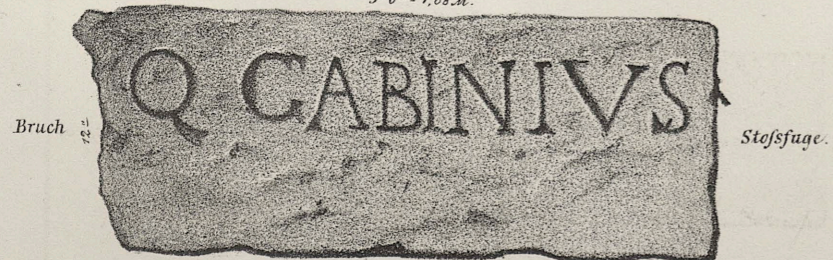
IV.
40" = 1,2 M.



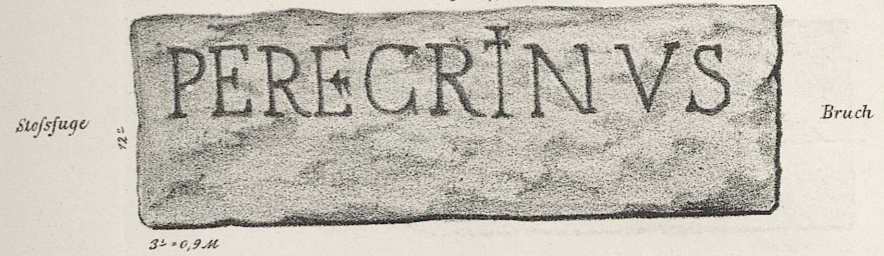
V.
32" = 0,96 M.



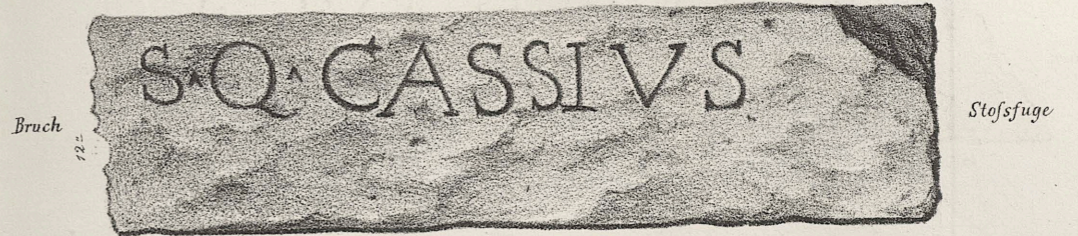
VI.
3'6" = 1,05 M.



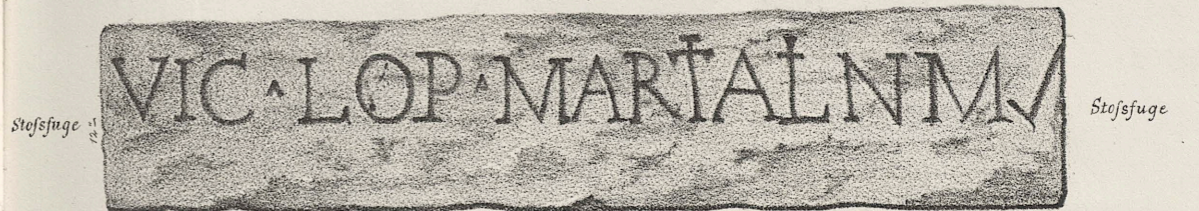
VII.
3' = 0,9 M.



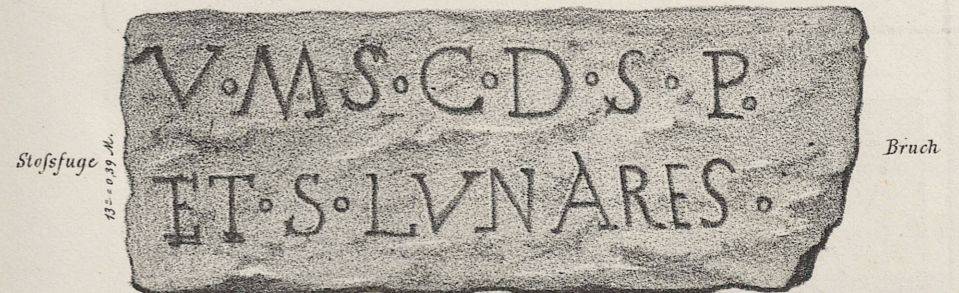
VIII.
33" = 0,99 M.



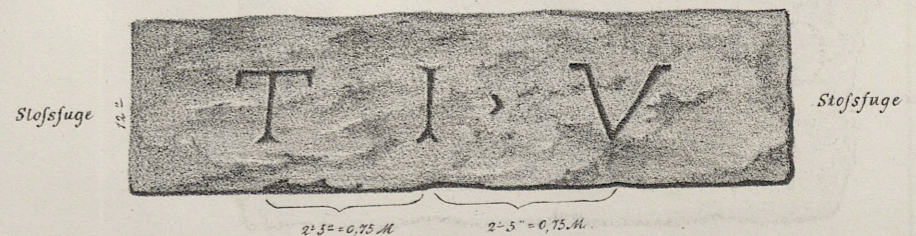
IX.
5'6" = 1,68 M.



X.
4'4" = 1,32 M.



XI.
7'2" = 2,1 M.

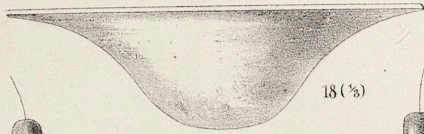




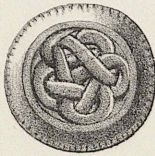
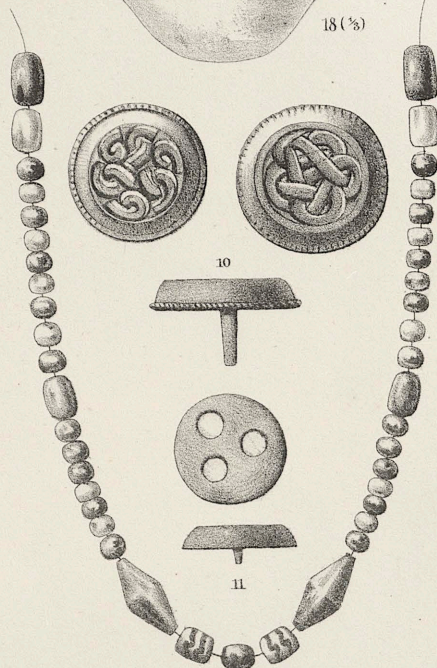
1 ($\frac{1}{2}$)



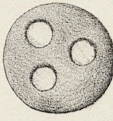
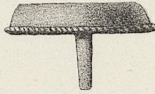
3 ($\frac{3}{8}$)



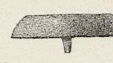
18 ($\frac{1}{8}$)



10



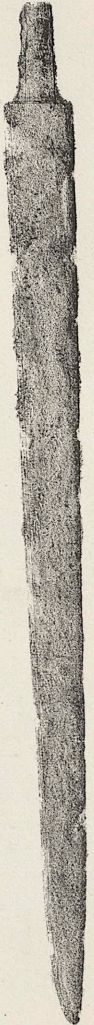
11



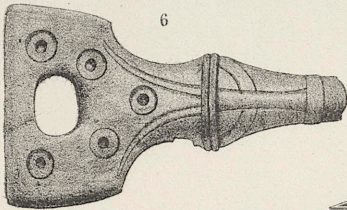
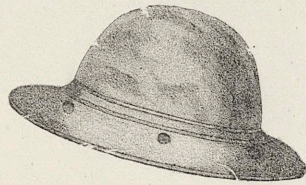
4 ($\frac{1}{5}$)



2 ($\frac{1}{5}$)



5 ($\frac{1}{4}$)

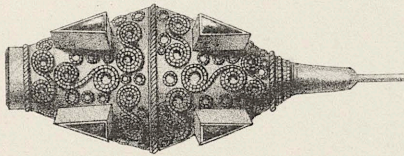


6

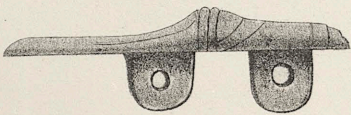
19 ($\frac{3}{8}$)



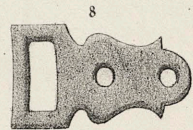
20



7



12 ($\frac{7}{8}$)



8

16 ($\frac{1}{2}$)

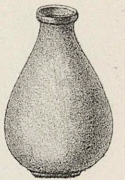


9

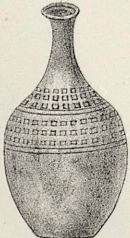
17 ($\frac{3}{4}$)



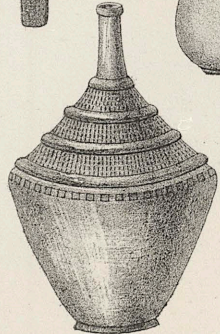
15 ($\frac{1}{3}$)



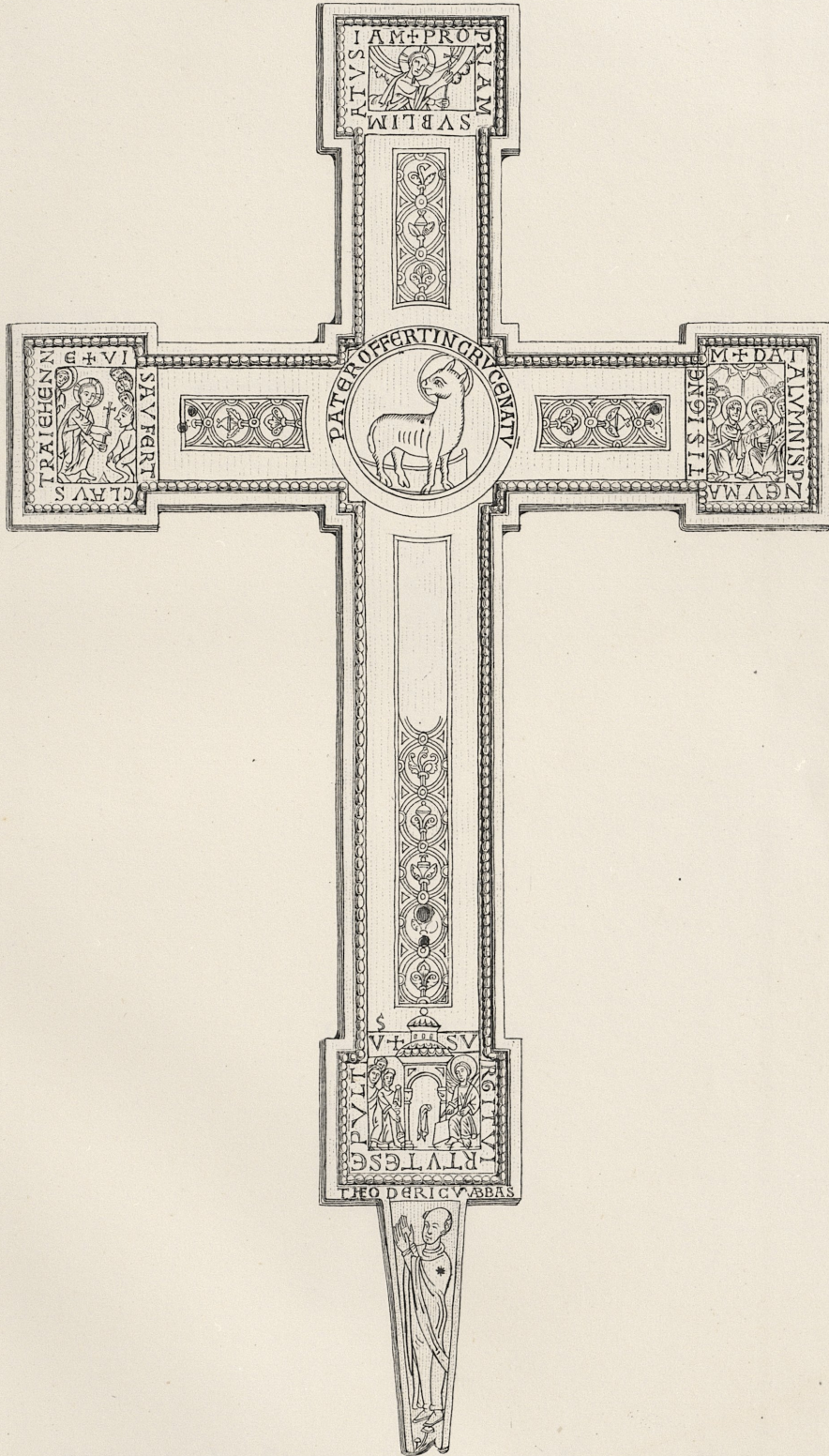
14 ($\frac{1}{3}$)



13 ($\frac{1}{8}$)

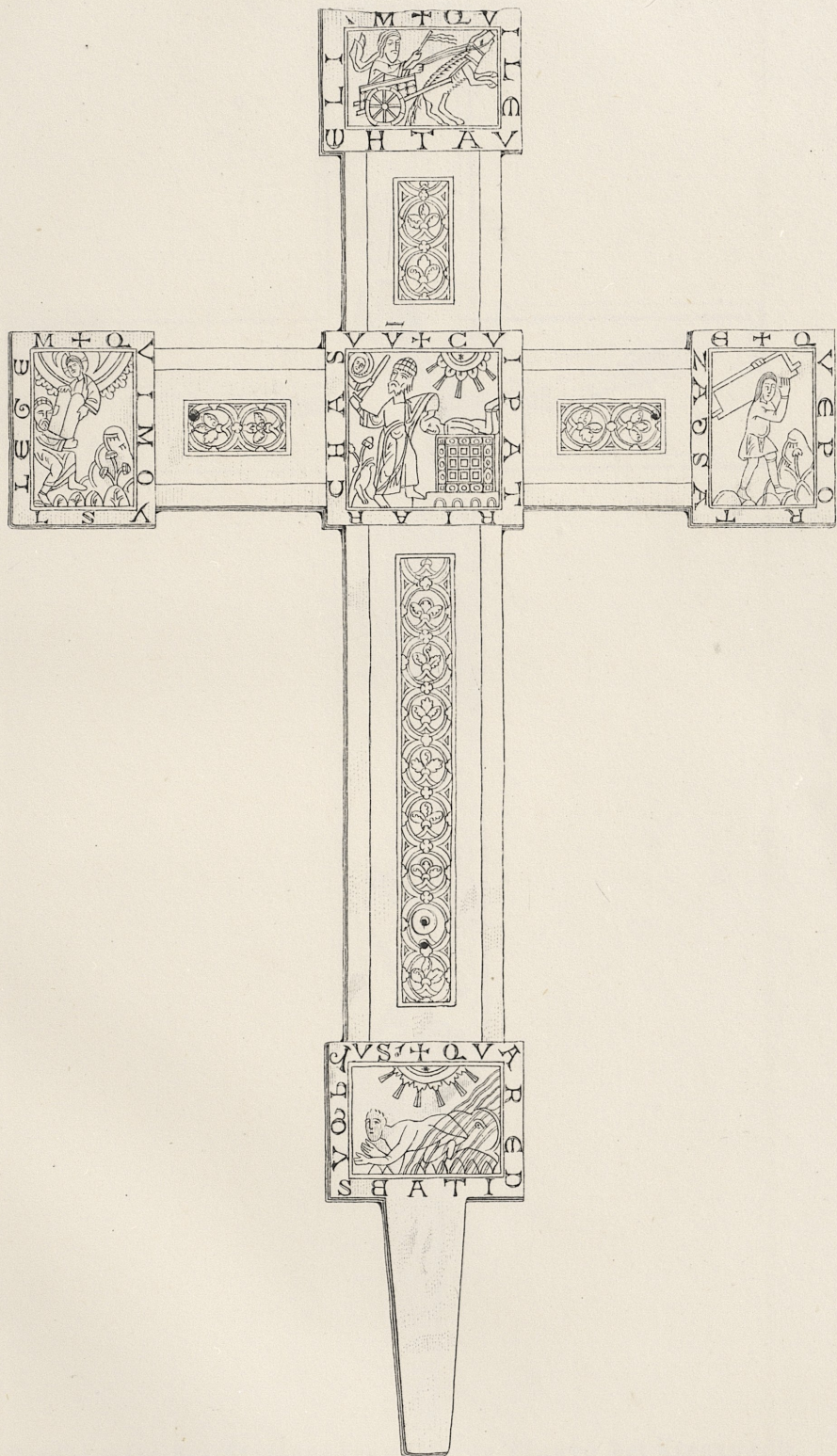






Vorderseite des Stationskreuzes im Dome zu Mainz.

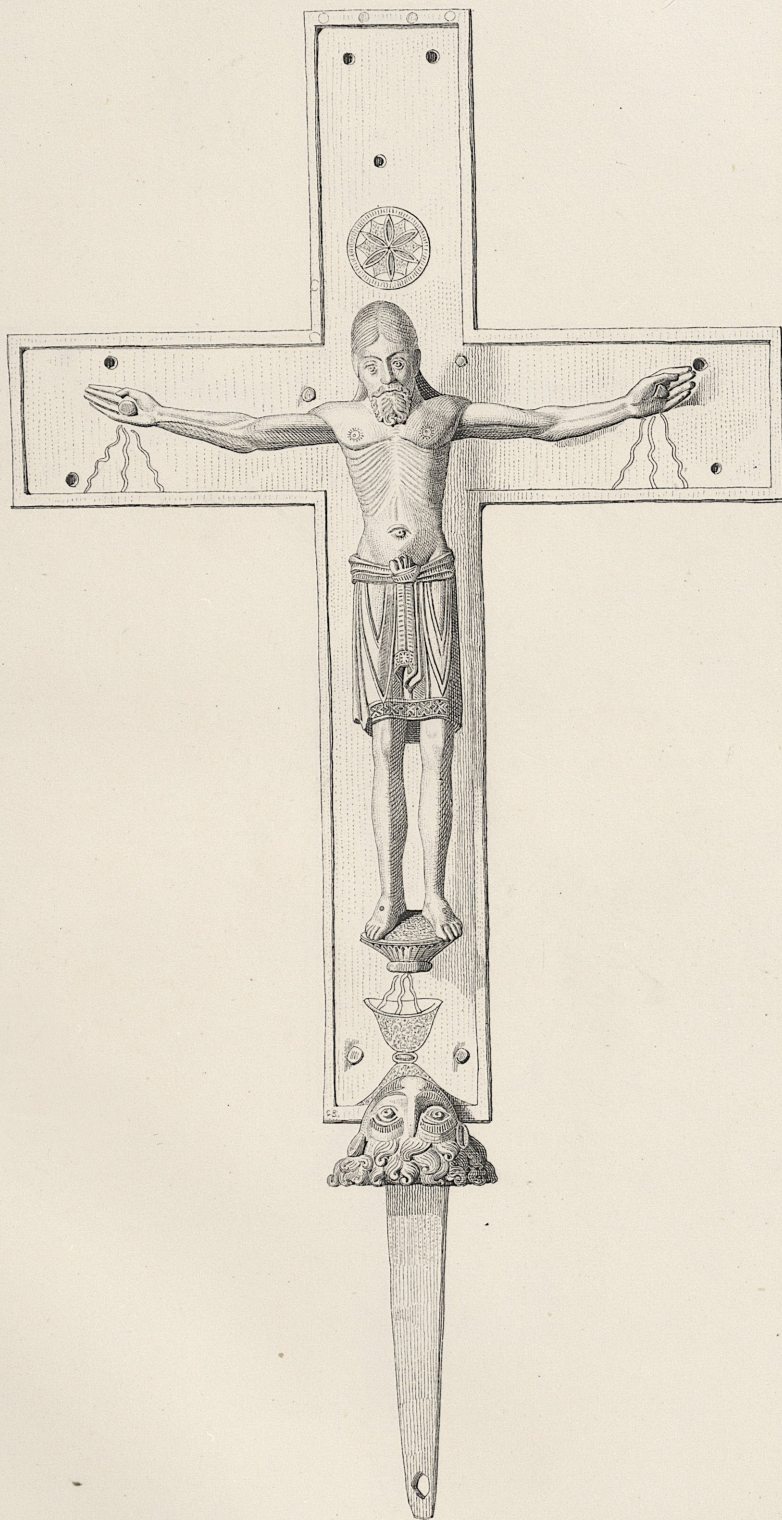
½ natürl. Gröfse.



Rückseite des Stationskreuzes im Dome zu Mainz.

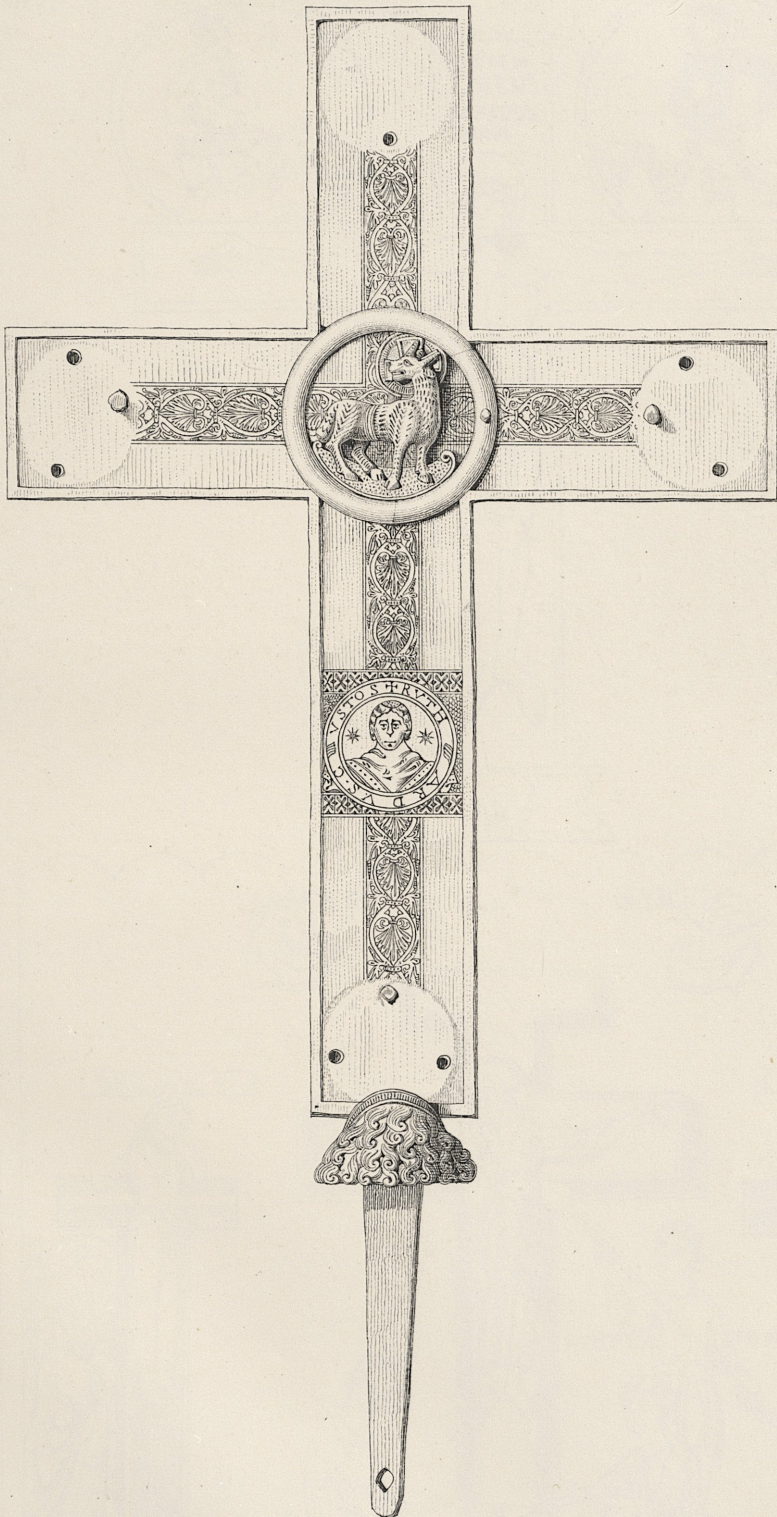
½ natürl. Gröfse.

Lith. Inst. d. rth. fr. Wlh. Univ. o. A. Henry in Bonn



Vorderseite des Stationskreuzes von Planig bei Kreuznach.

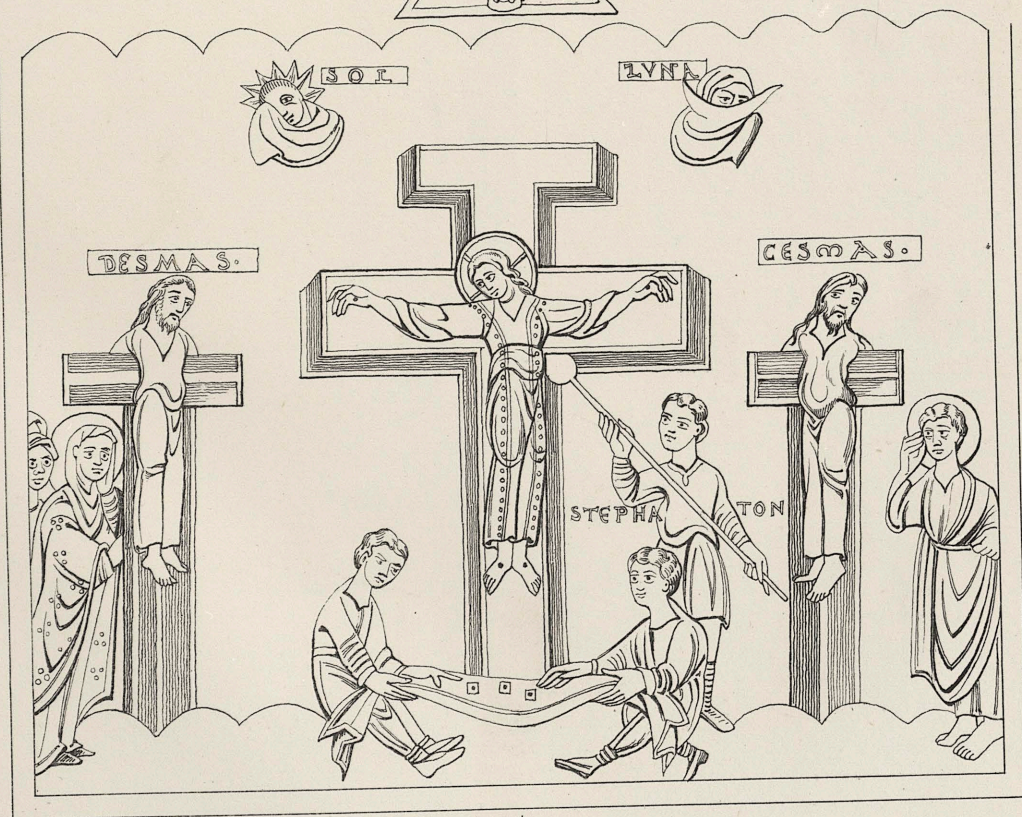
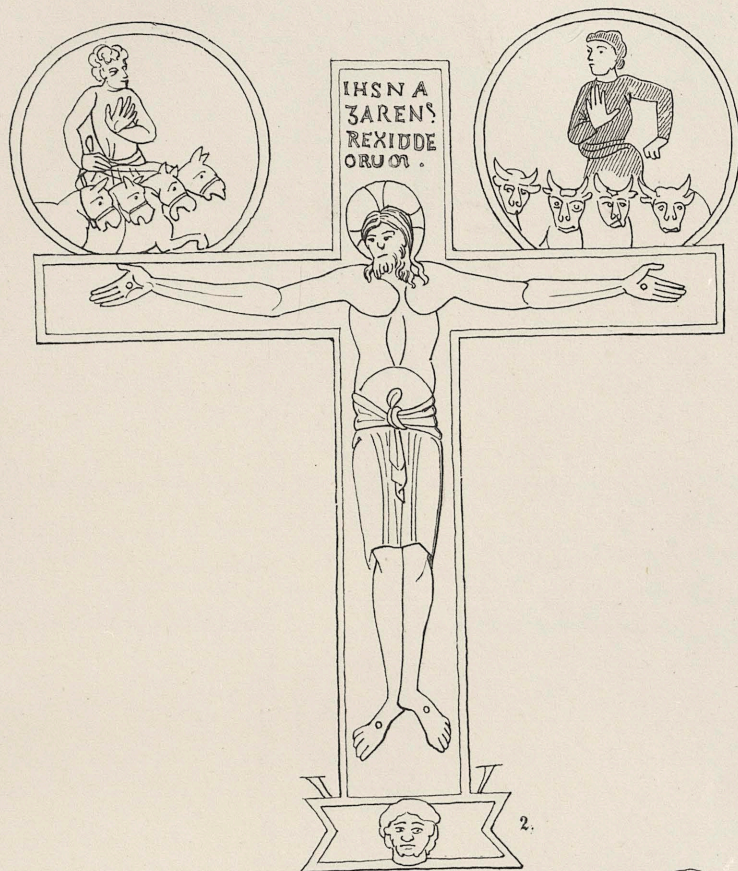
$\frac{1}{2}$ natürl. Gröfse.



Rückseite des Stationskreuzes von Planig bei Kreuznach.

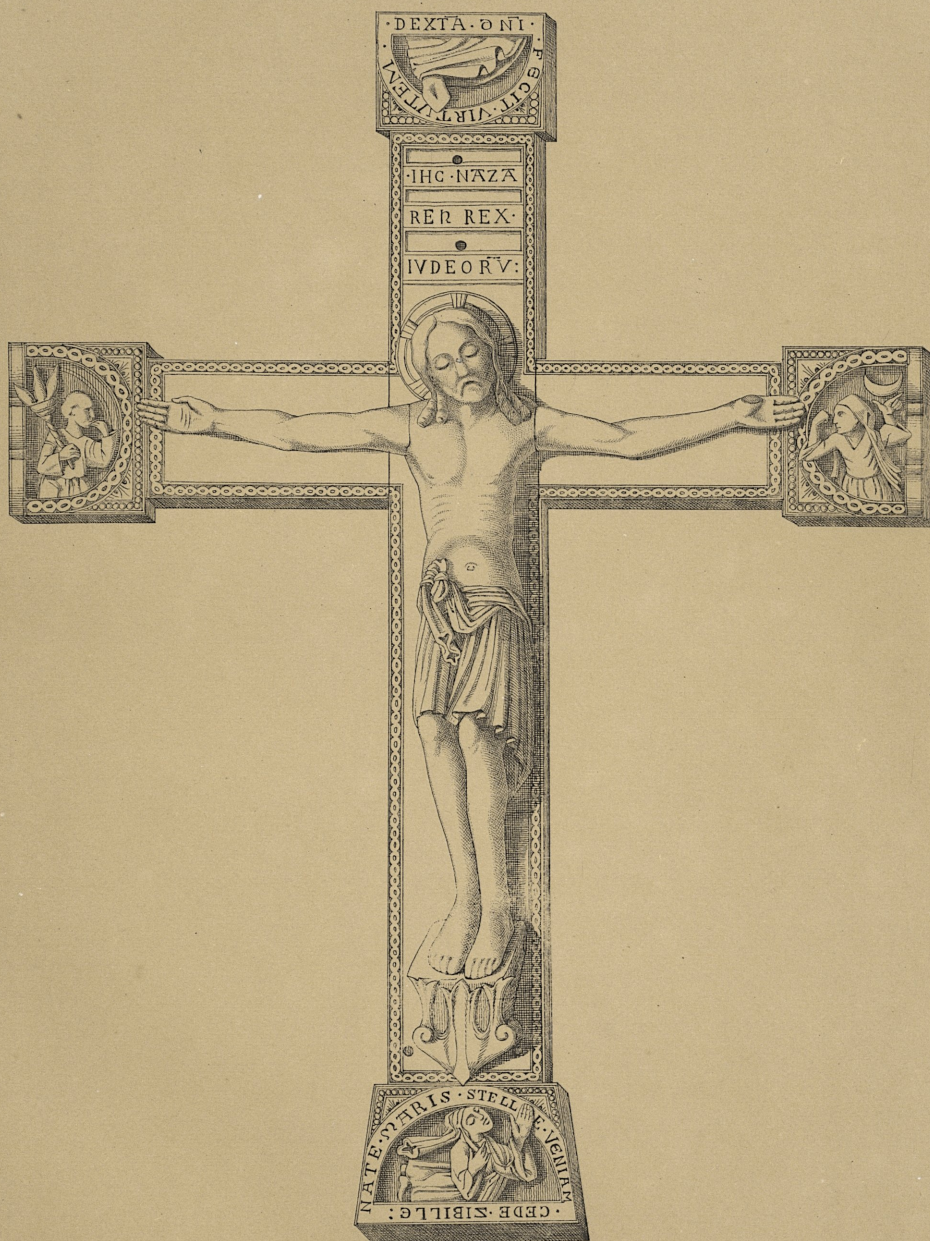
½ natürl. Gröfse.

Miniatürbild aus einer Bibelhandschrift des 10 Jahrh.
aus dem Kloster Farfa, jetzt in der vatic. Bibl. zu Rom.



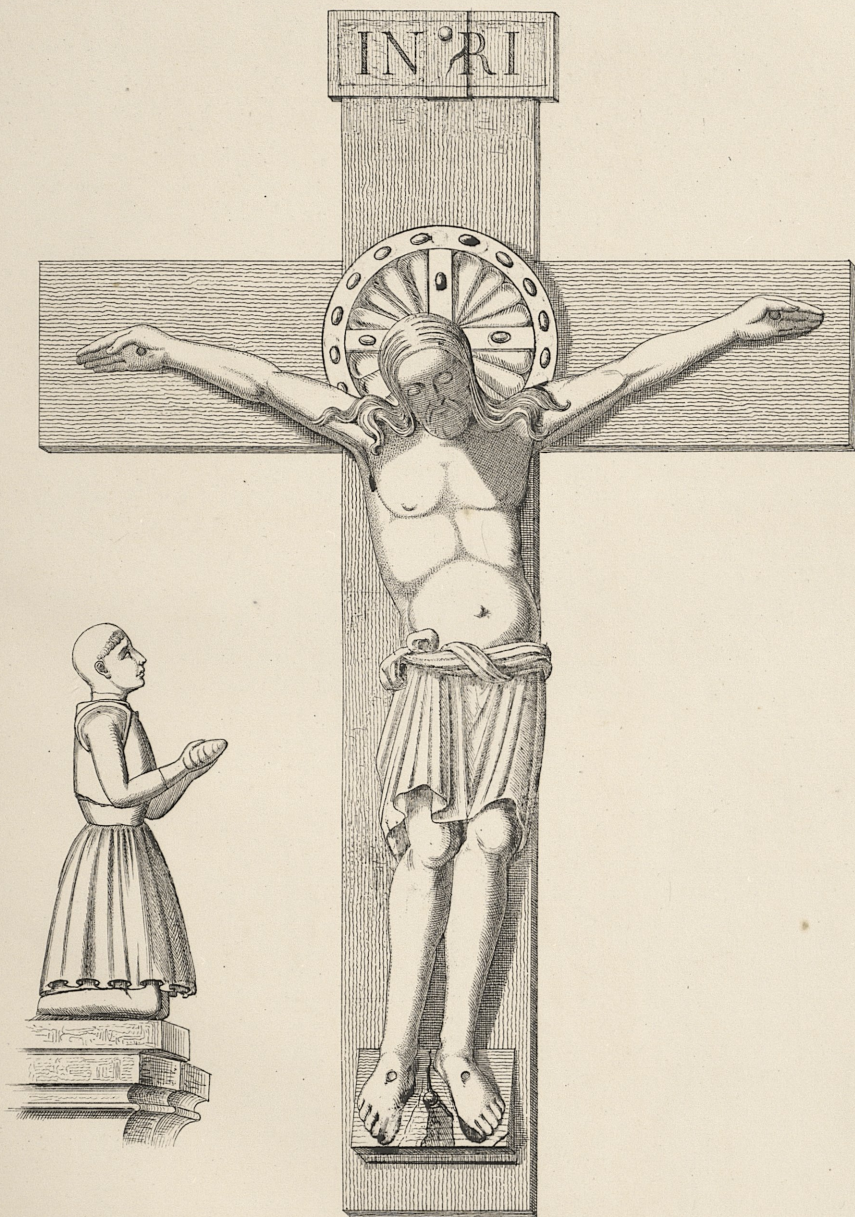
1.

Miniatürbild aus dem Evangel des Bischofs Egbert
in der Stadtbibliothek zu Trier.



Crucifix aus Elfenbein der 1365 in Cöln versteigert Essingh' Sammlung
nat. Grösse.

Lith. Anstalt von Tony Apenarius Cöln.



Crucifix im Dom zu Cöln.

Lith. Artist Anst. von Tony Avenarius, Cöln.