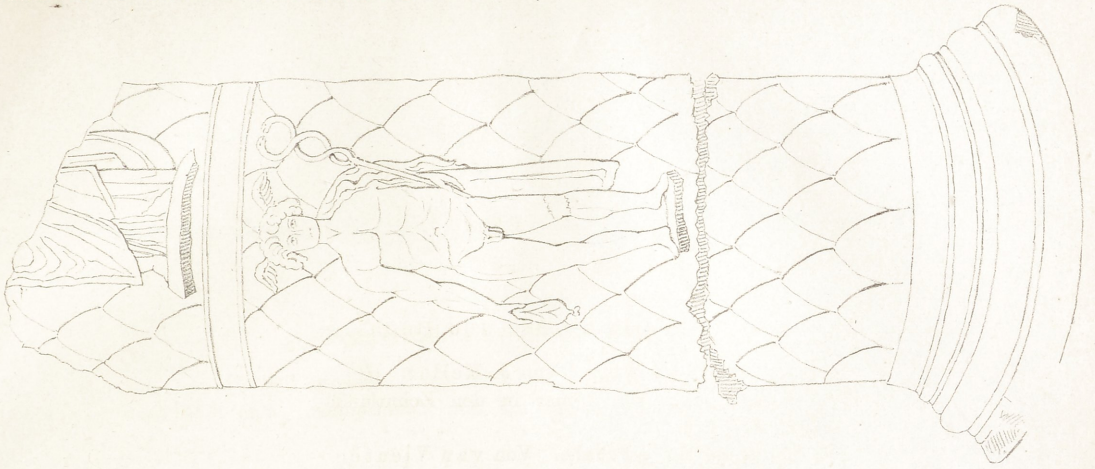
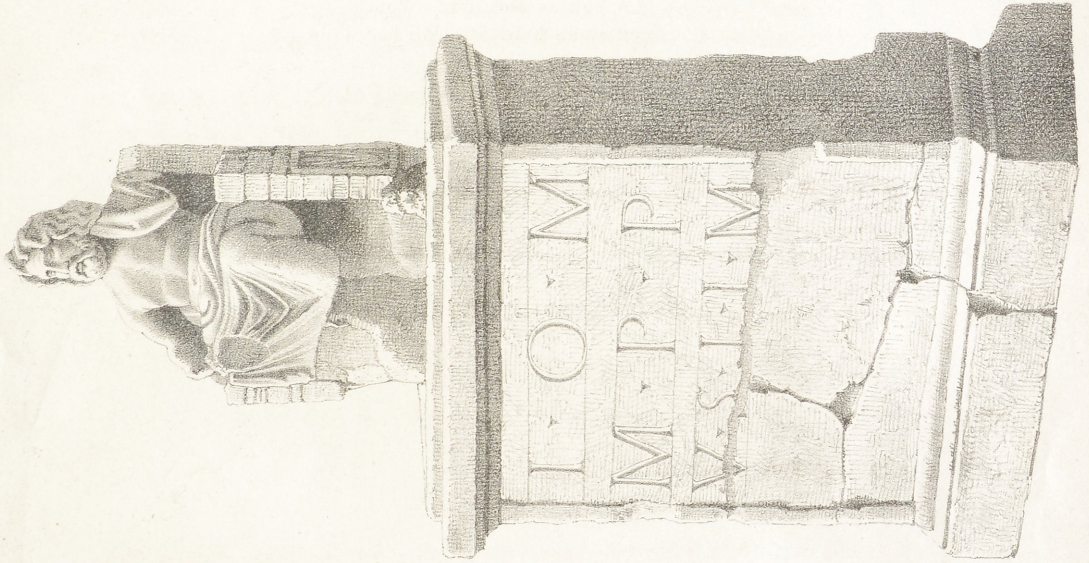


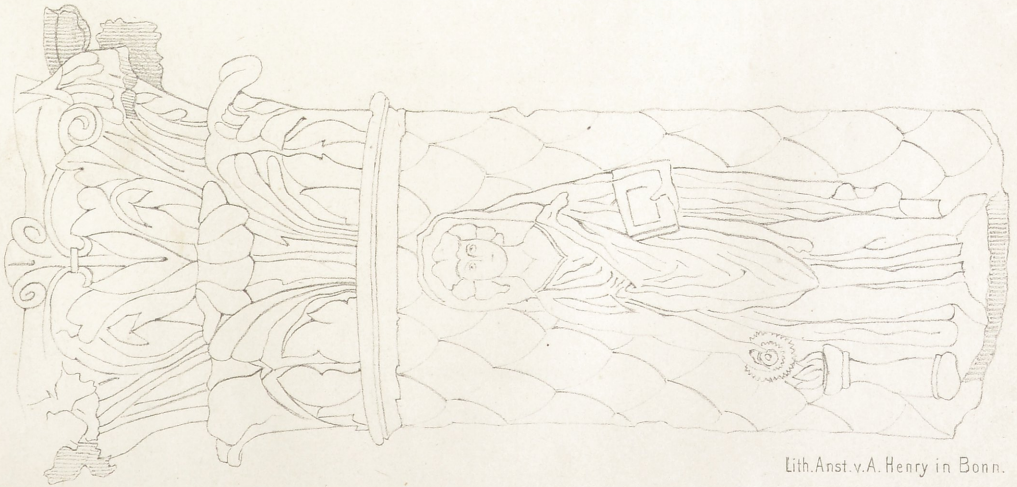
3.



1.



2.



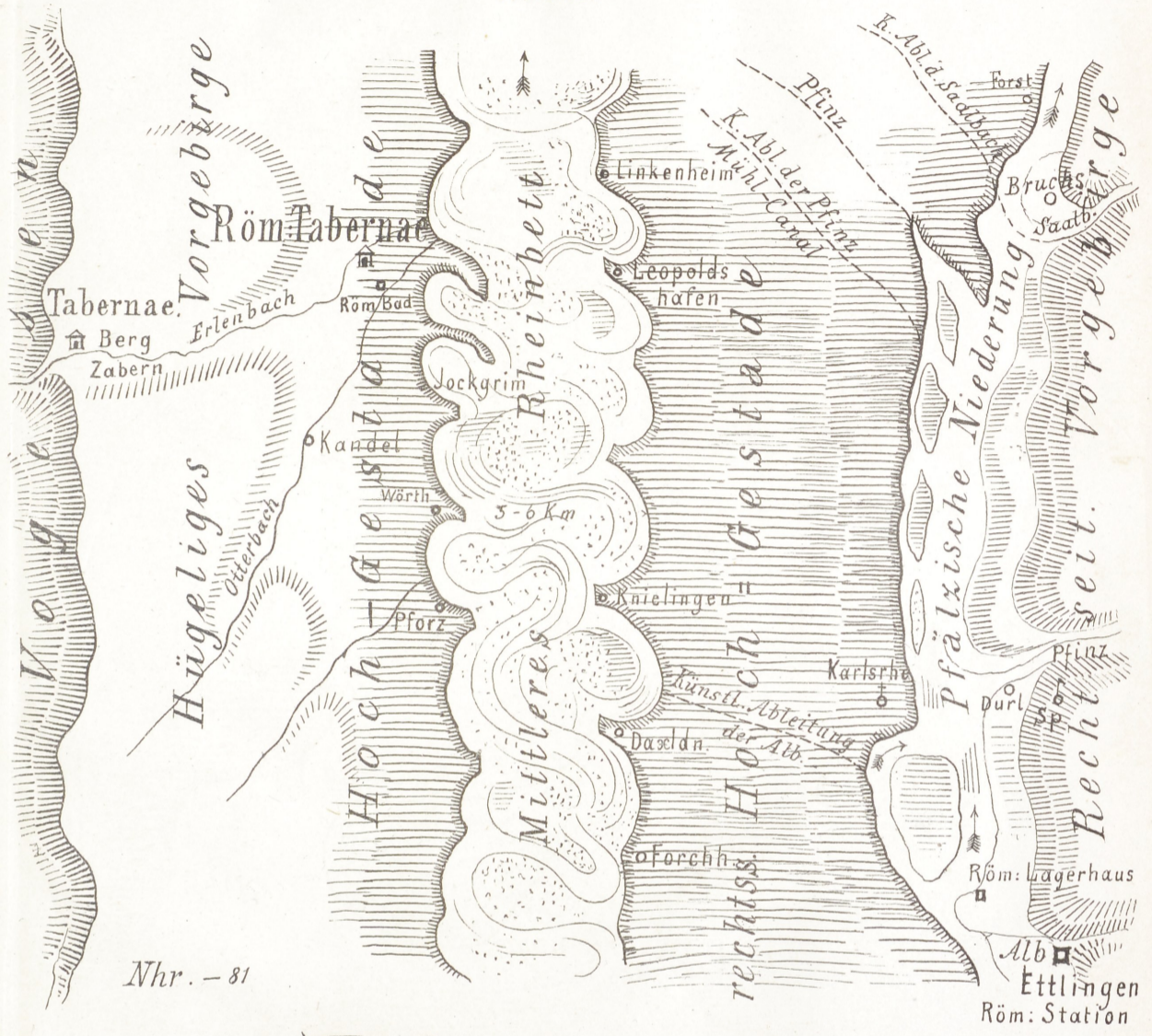
# Ein Theil des Oberrheins zur Römerzeit.

Schnitt.

Vorgebirge



Situation.



Nhr. - 81

## Die Neckar-Einmündung

zur Römerzeit 1: 100,000 d. n. Gr.



Nr. 80.

### Codex Egberti



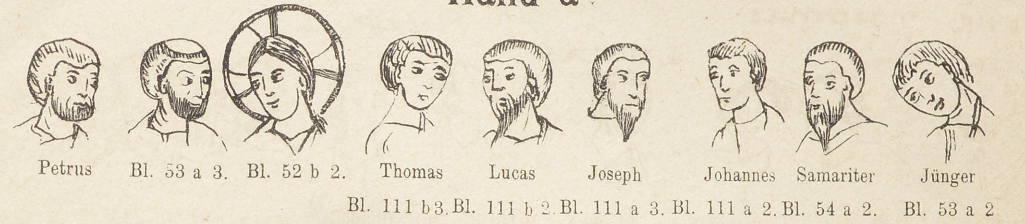
Bl. 13 a.



Bl. 16 b.

### Codex Epternacensis

#### Hand a.

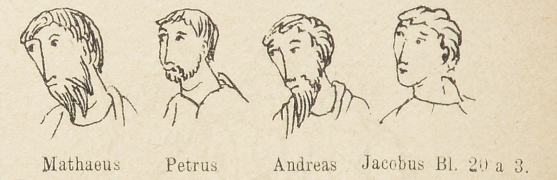


#### PASTORES



Bl. 18 b 2.

#### Hand b.



#### CARNIFICES



Bl. 19 b 2.

#### MATRES

### Codex Egberti

### Codex Epternacensis

LEP S U S



Bl. 21 b.



Bl. 28 b.

LEPROSUS



Bl. 52 b. 2.

M  
A  
T  
H  
E  
V



Bl. 20 a 3.



Bl. 26 b.



Bl. 31 a.



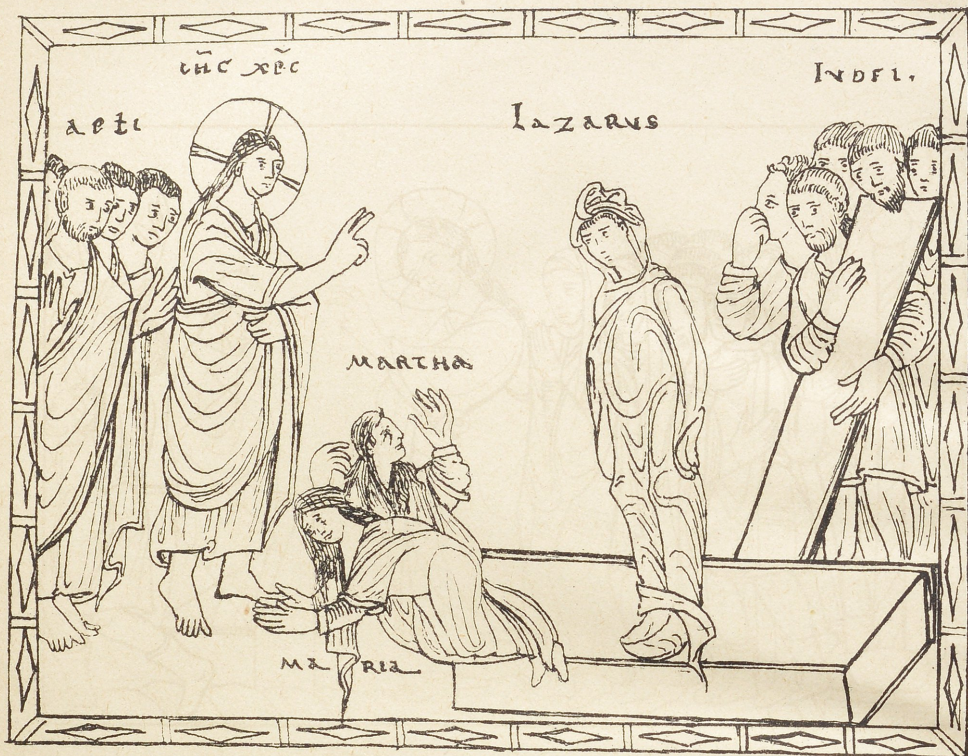
Bl. 53 a 3.



Bl. 52 b 3.

### Codex Egberti

### Codex Epternacensis



Bl. 52 b.

Bl. 53 b 2.



Bl. 102 a.

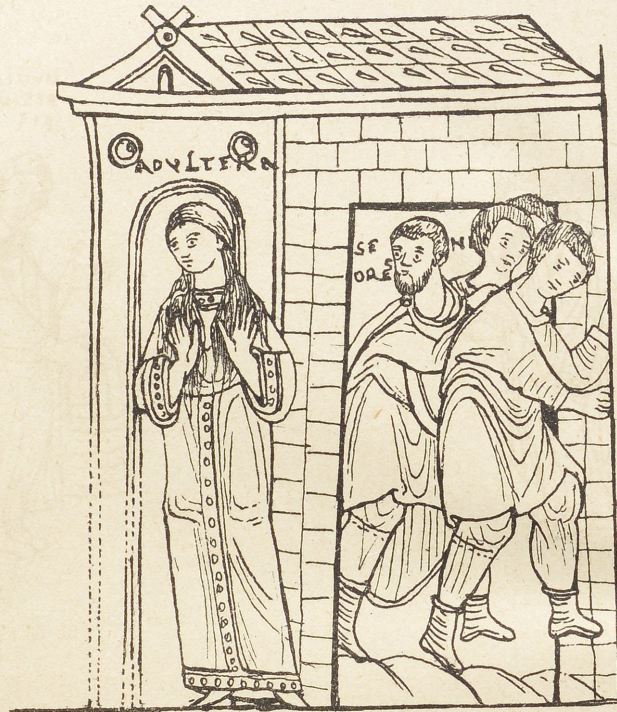
COM M VNIS VITA



Bl. 112 a 3.

### Codex Egberti

### Codex Epternacensis



Bl. 46 b.



Bl. 53 b 1.



Bl. 53 b 1.



Bl. 44 b.



Bl. 82 a.



Bl. 111 a 1.

Codex Egberti

Codex Egberti



Bl. 18 a.



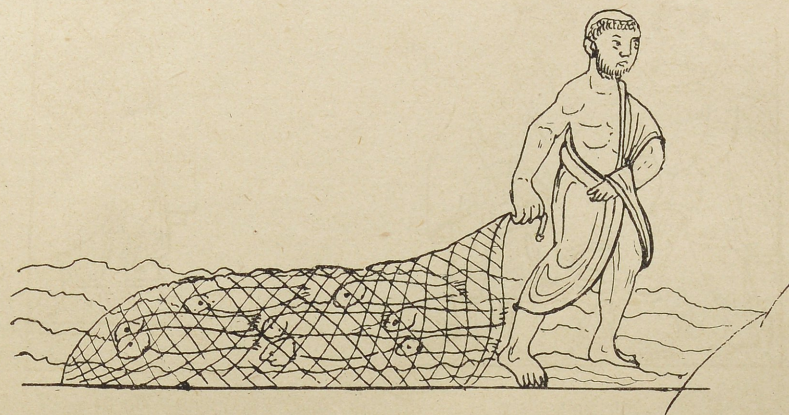
Bl. 66 a.



Bl. 20 b.

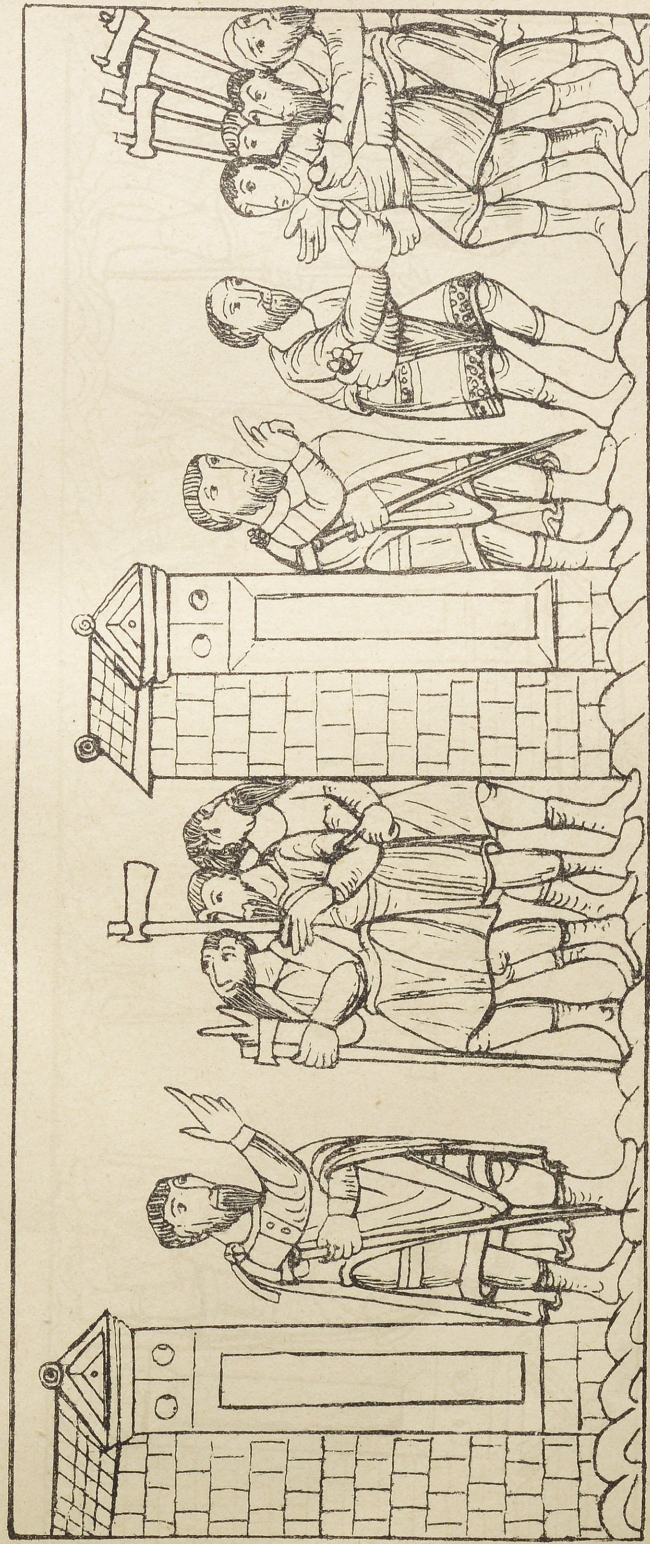


Bl. 34 a.



Bl. 90 a.

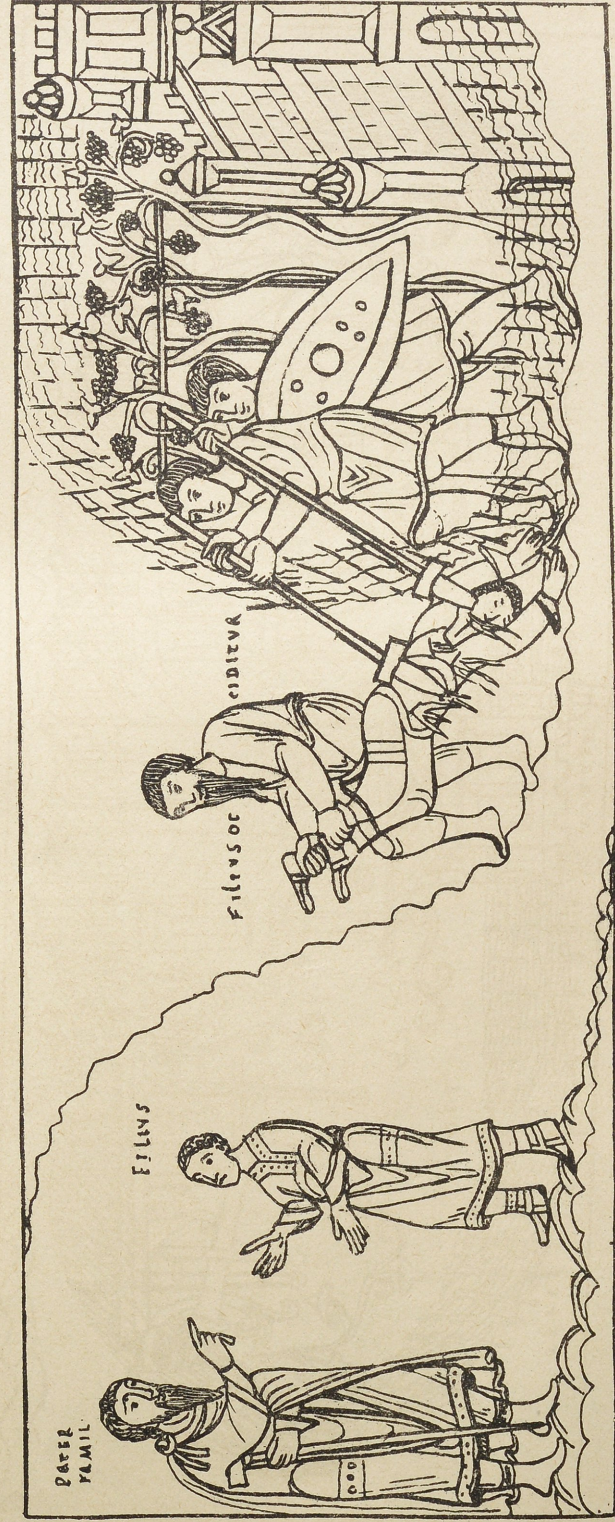
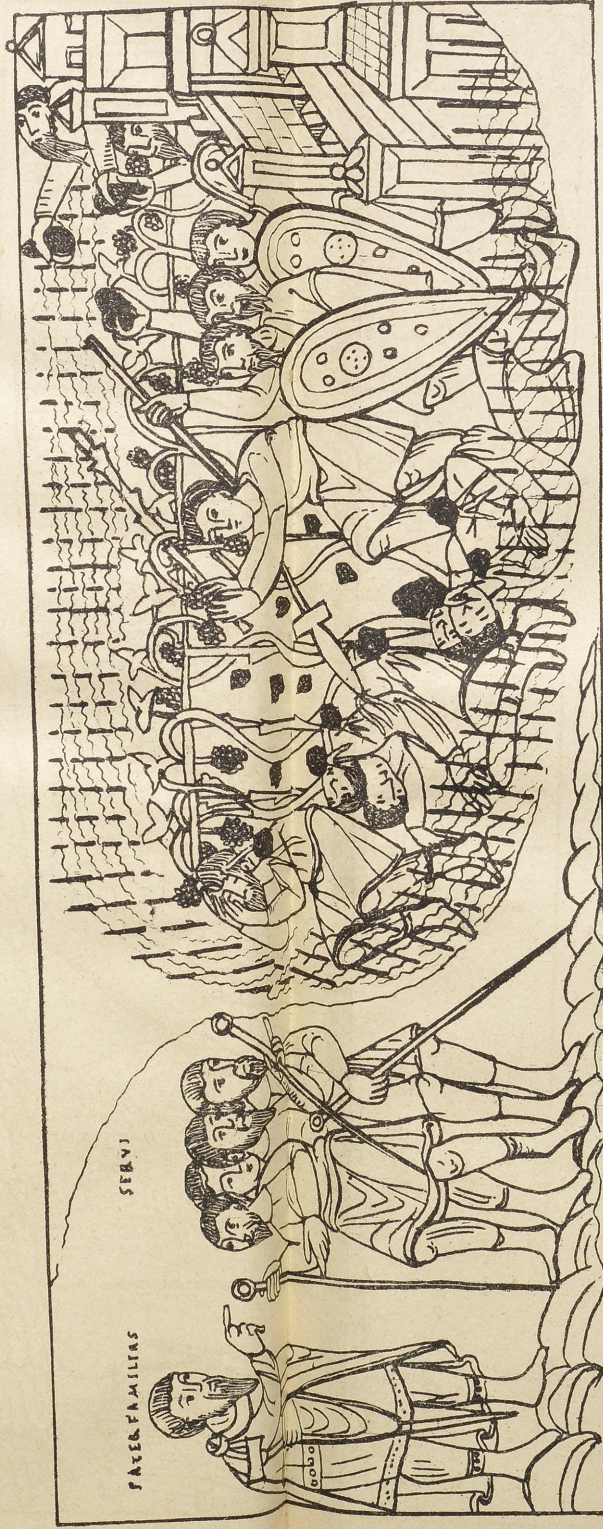
Codex Epternacensis Bl. 76 b.



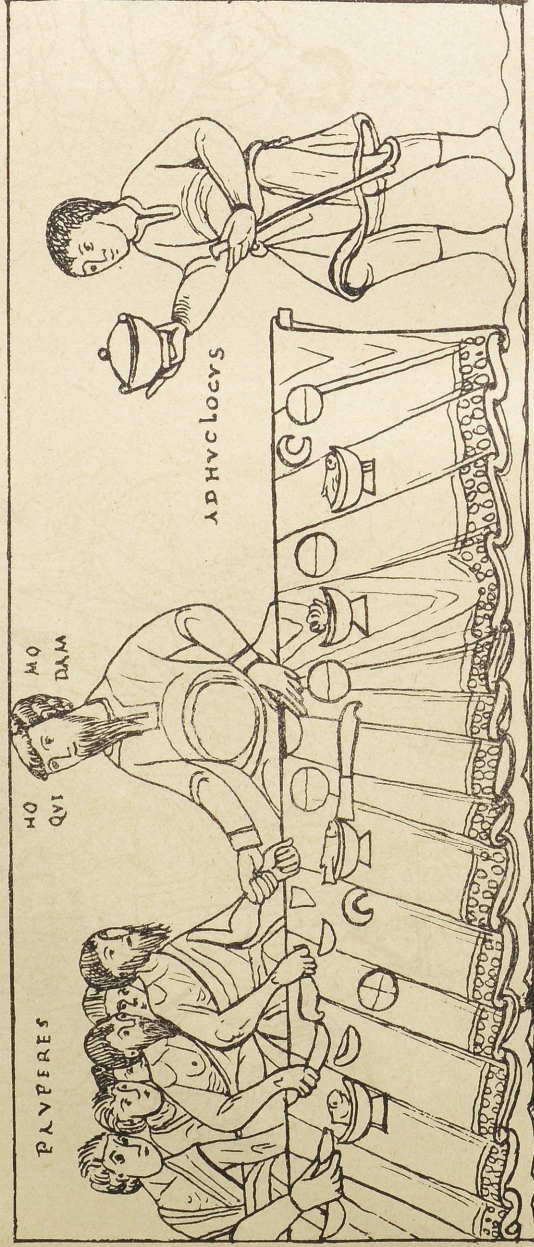


Codex Epternacensis

Bl. 77 a.



Codex Epternacensis



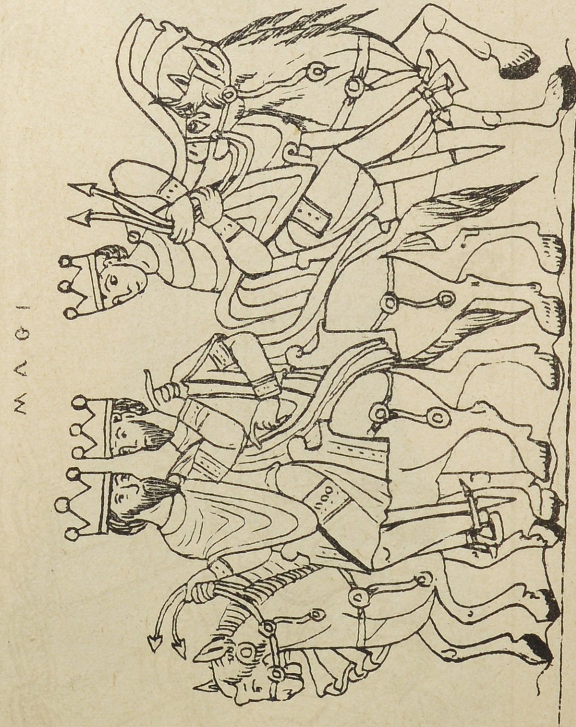
Bl. 77 b 1.



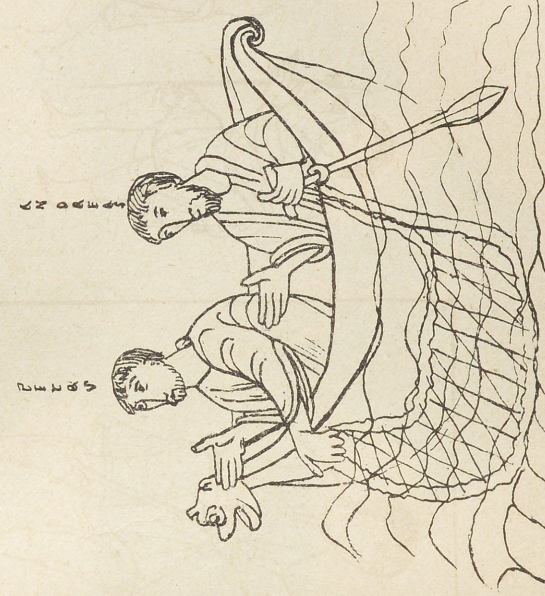
Bl. 77 b 2.



Bl. 77 b 3.



Bl. 19 a 2.

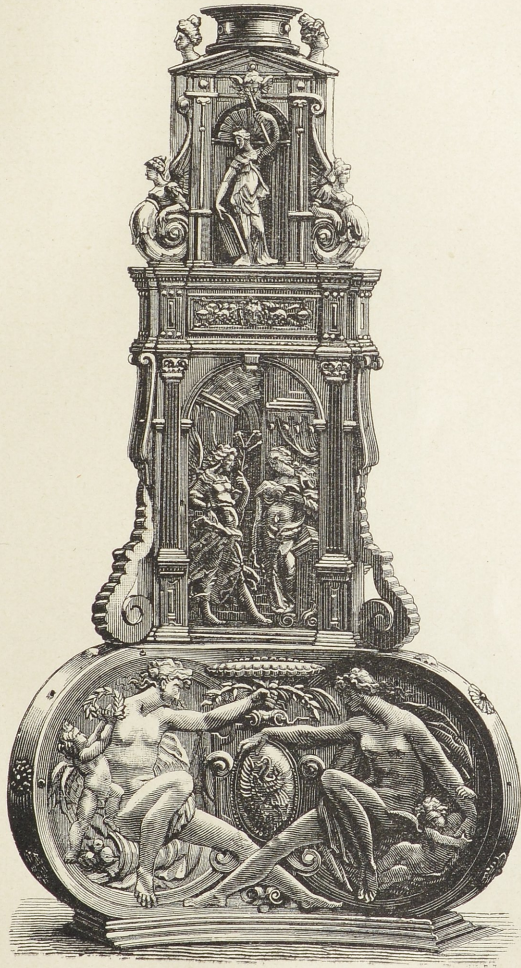


Bl. 20 a 2.

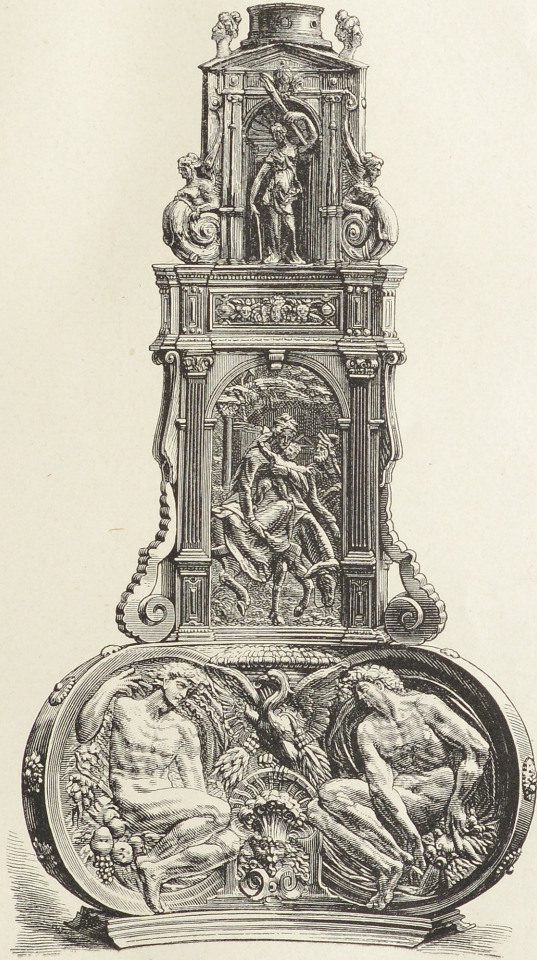


R. B. 1870

Altarkreuz aus der Patrocli-Kirche in Soest.



*Altarkreuz aus der Patrocli-Kirche in Soest.*



Altarkreuz aus der Patrocli-Kirche in Soest.