



Aeneas-Gruppe aus Kalk
im Provinzial-Museum zu Bonn.



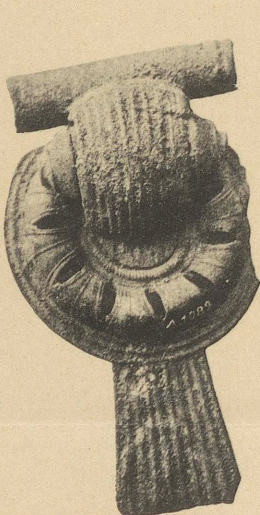
1



2

3

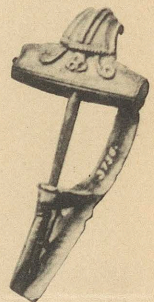
4



5



6



7



2

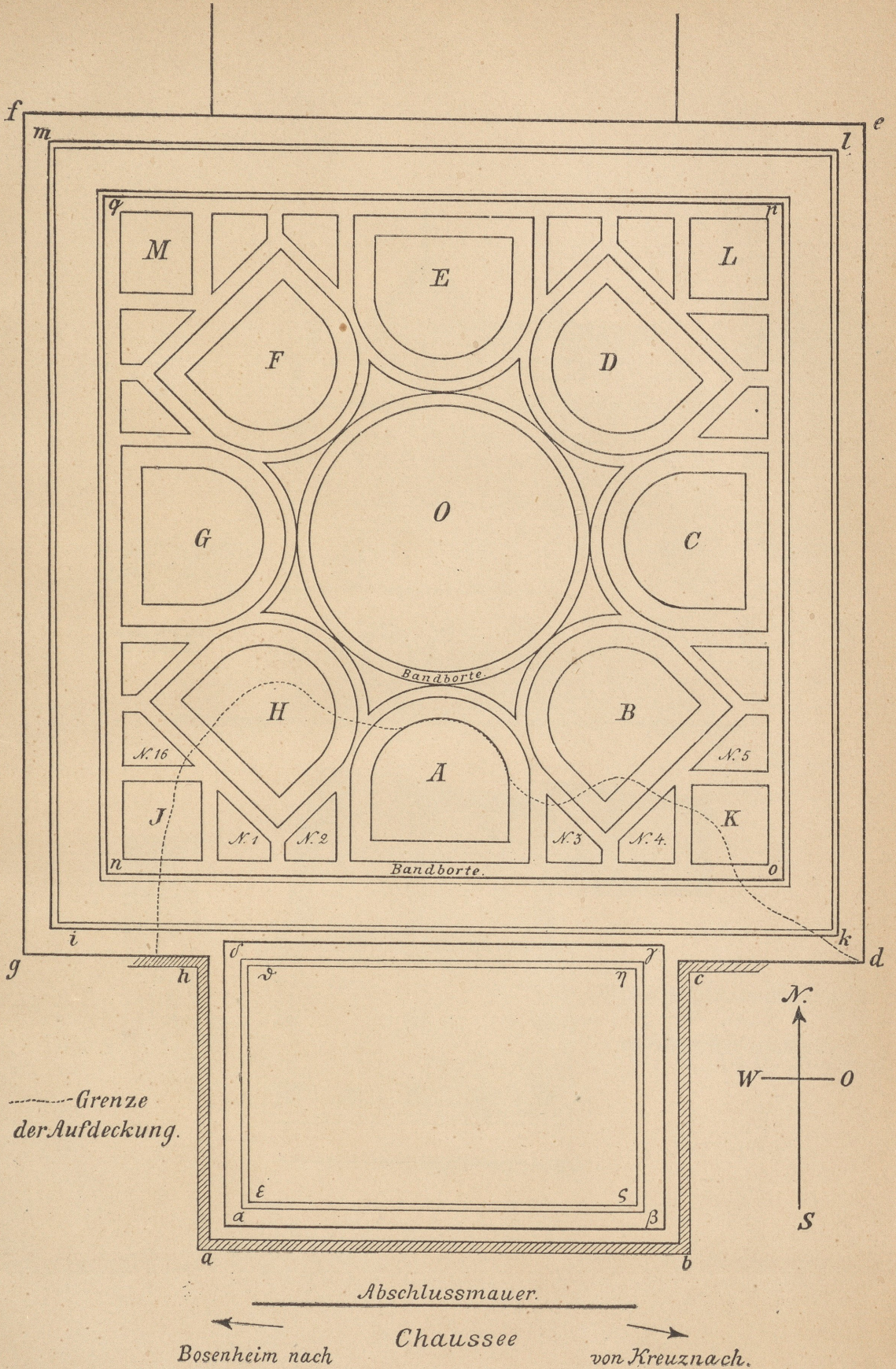


4

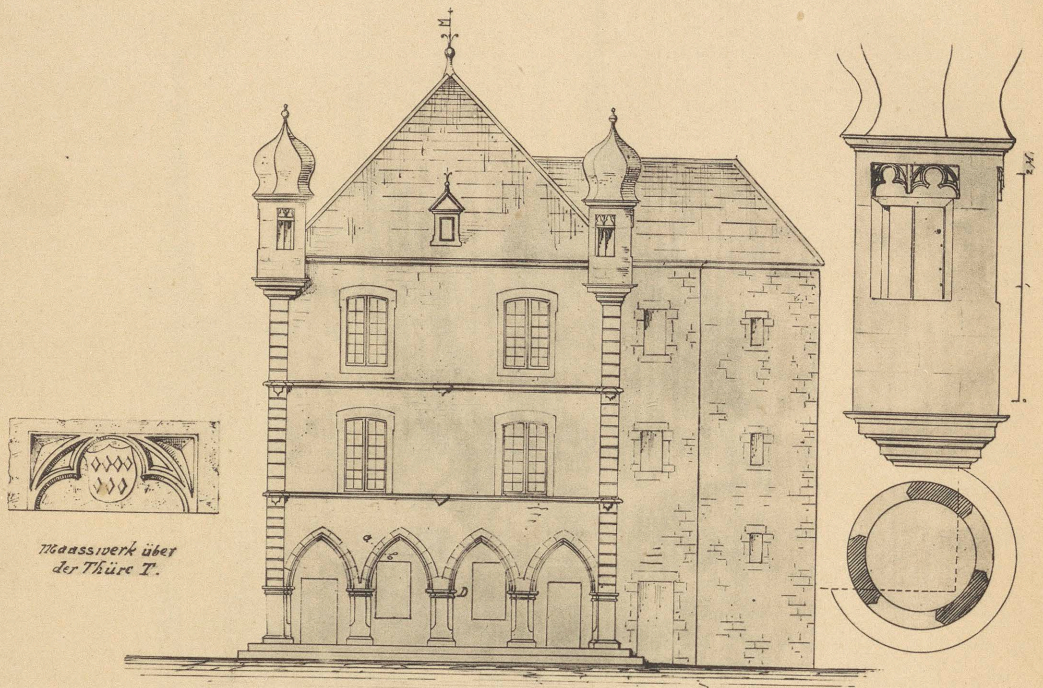


3

Remisches Bronzerelief aus Köln.

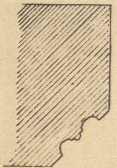


Römisches Mosaik bei Kreuznach.

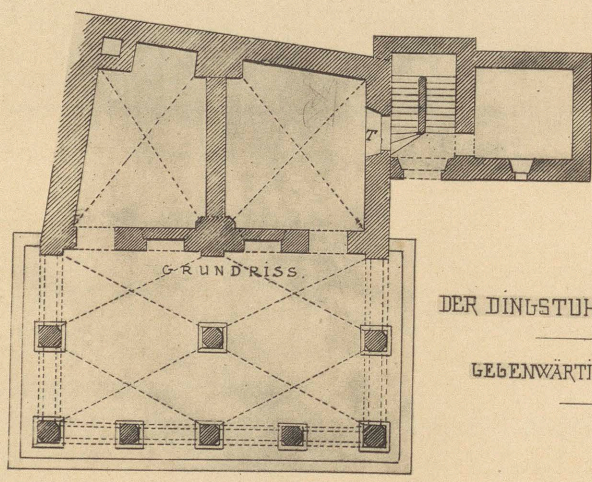
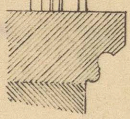


Maasswerk über der Thüre T.

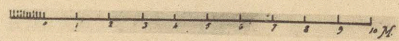
Profil a-b

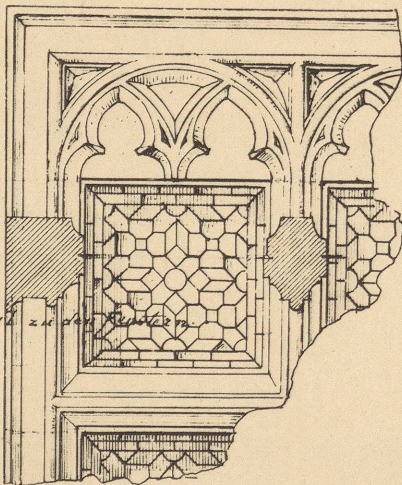
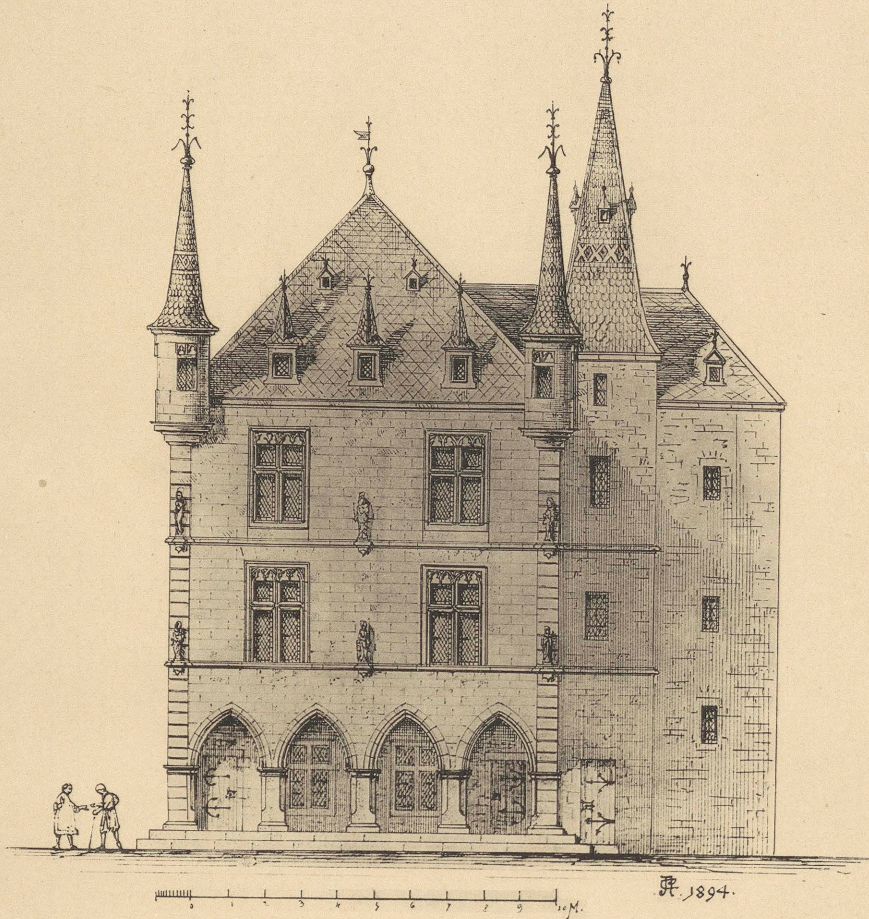


Profil D



DER DINGSTUHL ZU ECHTERNACH
LEBENWÄRTIGER ZUSTAND.

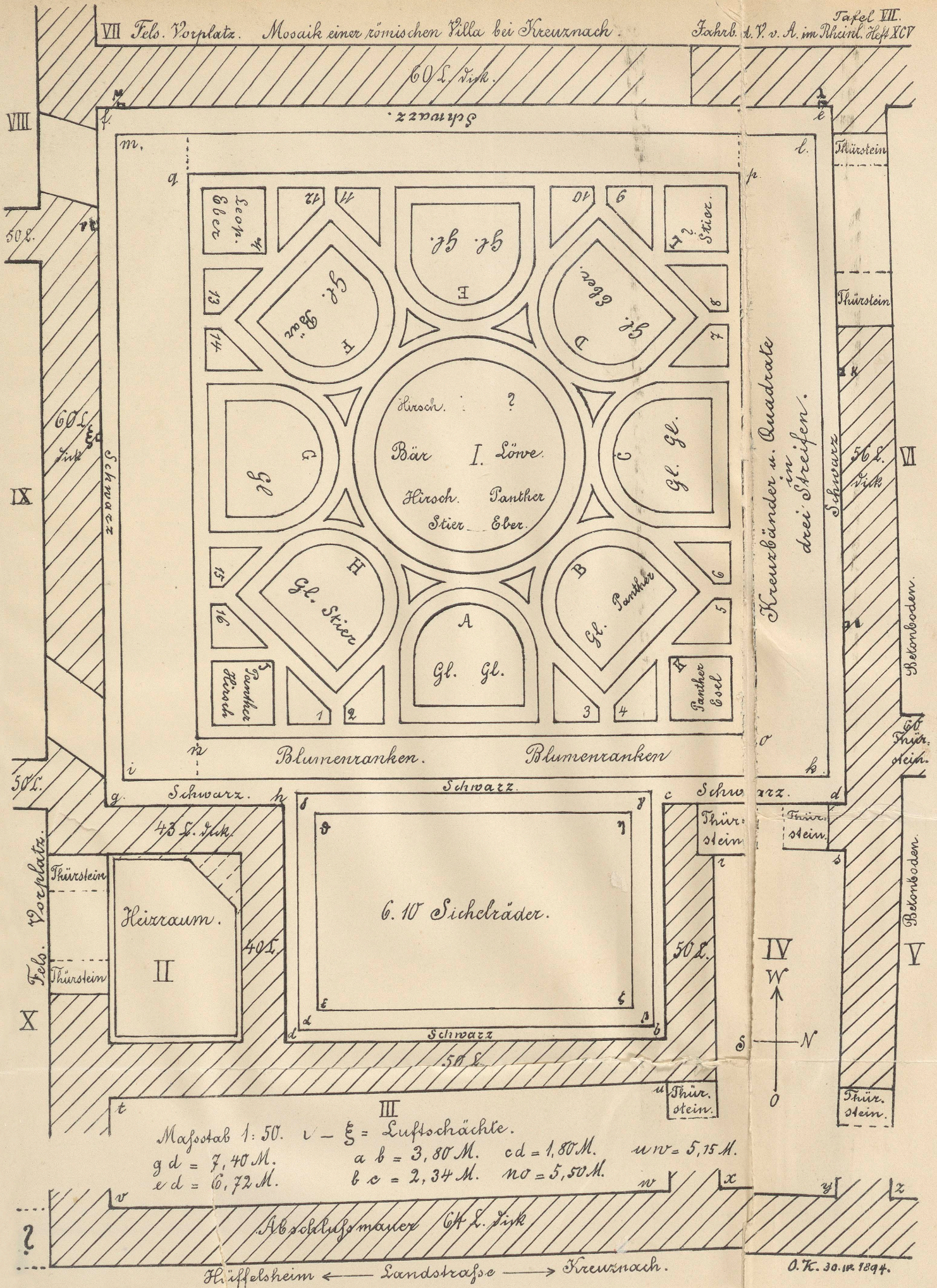




DER DINNSTUHL ZU ECHTERNACH

RESTAURATIONSPROJECT.

Detail zu oben Rest. 1894



Masstab 1:50. $v - \xi =$ Luftschächle.
 $g d = 7,40 M.$ $a b = 3,80 M.$ $cd = 1,80 M.$ $uv = 5,75 M.$
 $e d = 6,72 M.$ $bc = 2,34 M.$ $no = 5,50 M.$ $w y$ x

Abschlussmauer 64 L. dick
 Hüffelsheim ← Landstraße → Kreuznach.

O.K. 30.12.1894.