



- Römische Staatsstrassen
- Römische Zweigstrassen
- Römische unter u. neben Chaussées
- Jetztige Chaussees
- Alte Landstrassen und Wege
- Richtungslinien
- Eisenbahnen
- Römercanäle (resp. starkes Gefälle)
- Befestigungen
- ☐ Castra, castelle, Ausläufer
- Signalstationen

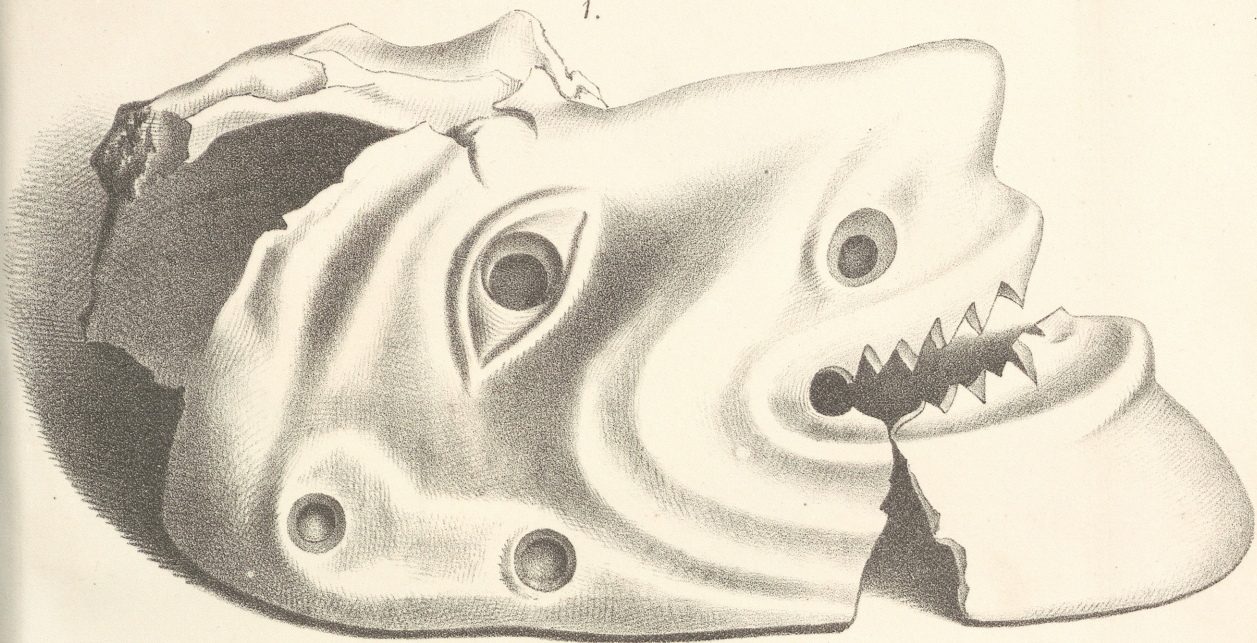
Laugen, Entfernungen n. d. Itinerarien (XII)
 Höhenzahlen in metern über der Nordsee.

1 : 200.000

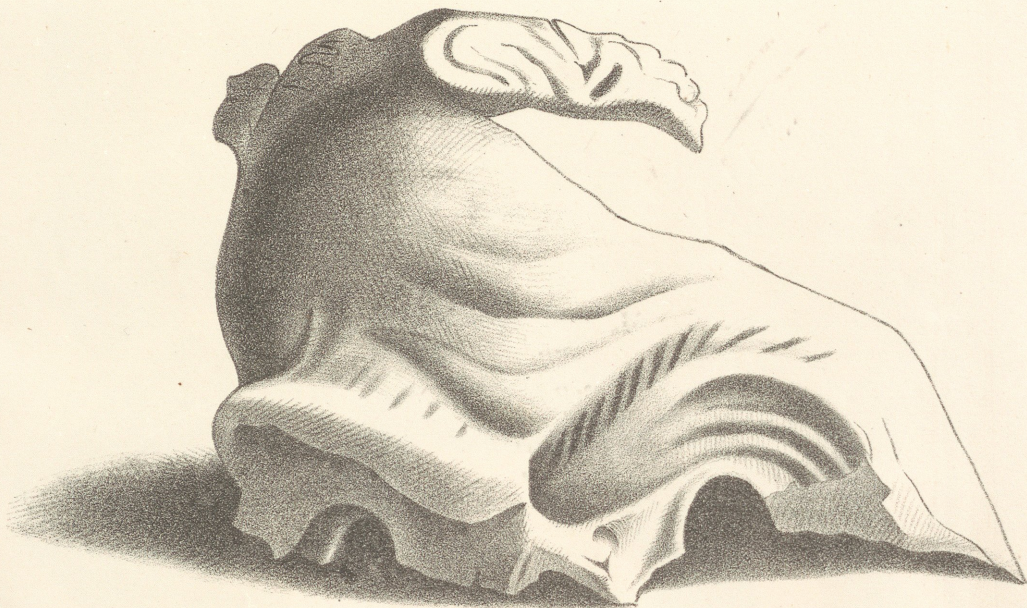
20000 Schritt = 4000 p. Ruthen = 2 p. Meilen

30000 röm. Fuss
 6000 passus
 6000 p. Göliten a 1480 m
 I II III IV Laugen a 2220 m

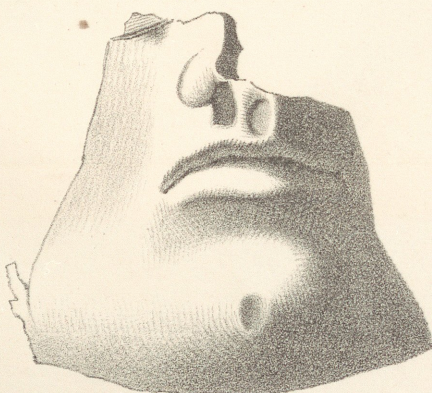
1.



2.



3.

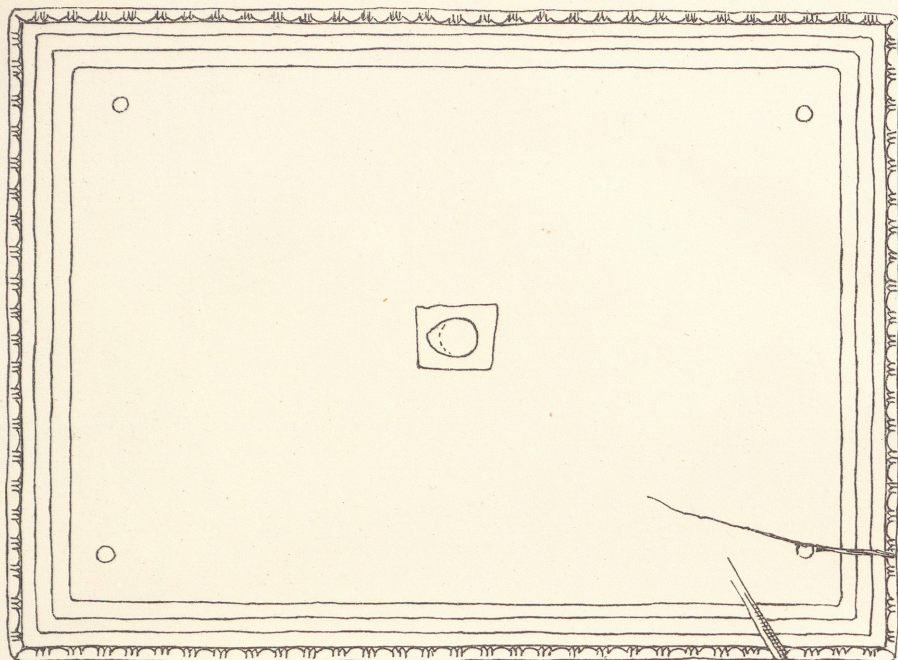


Masken Fragmente aus Köln.

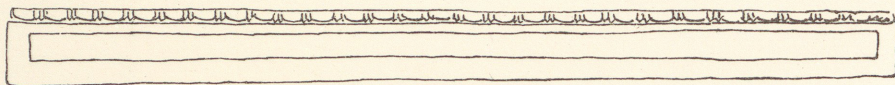
1/2 n. Gr.

Lith. Inst. v. A. Henry, Bonn.

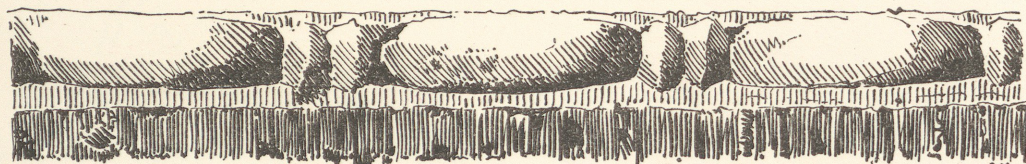




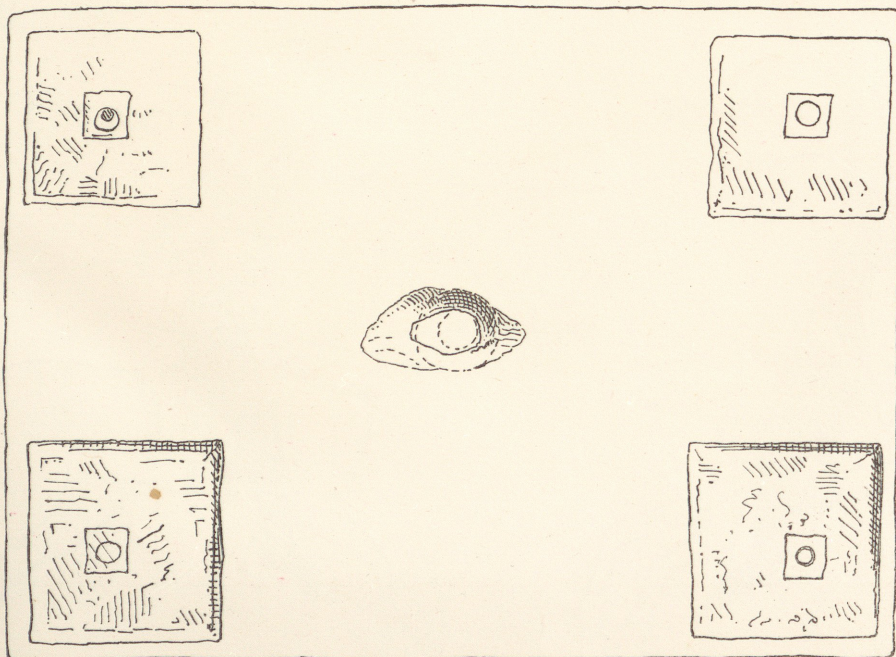
1.



1a.



1b.



1c.



4.



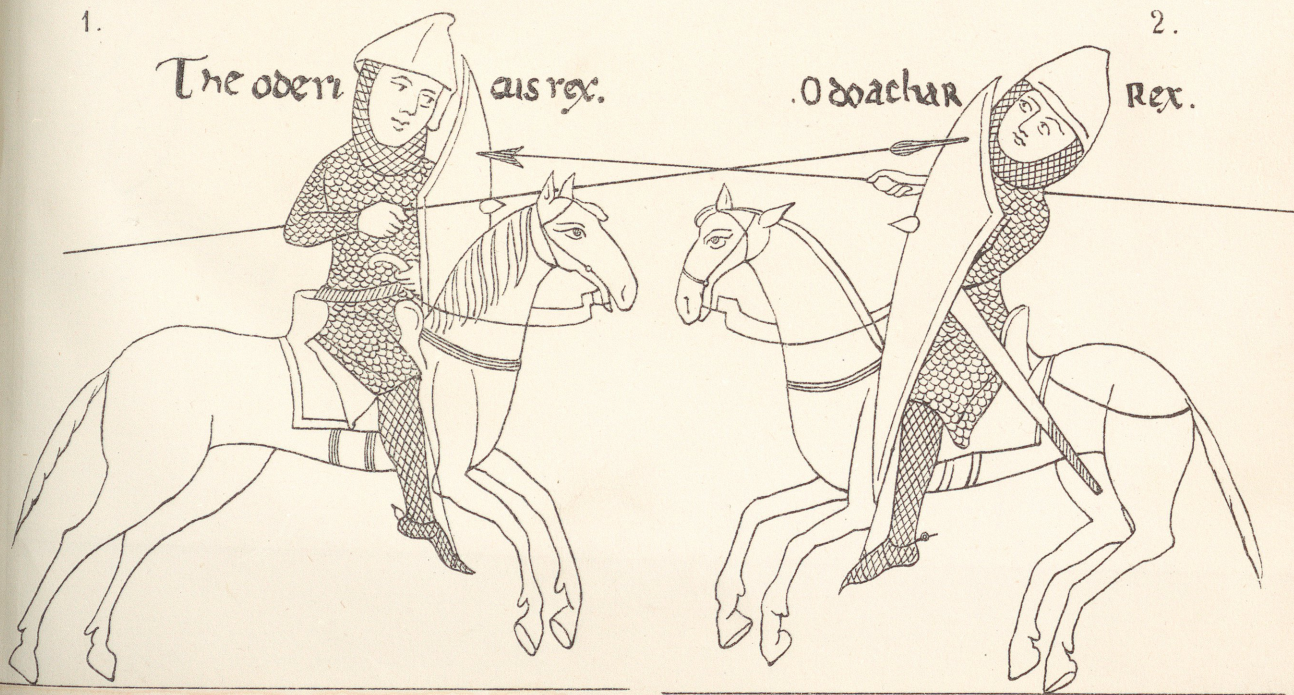
1.

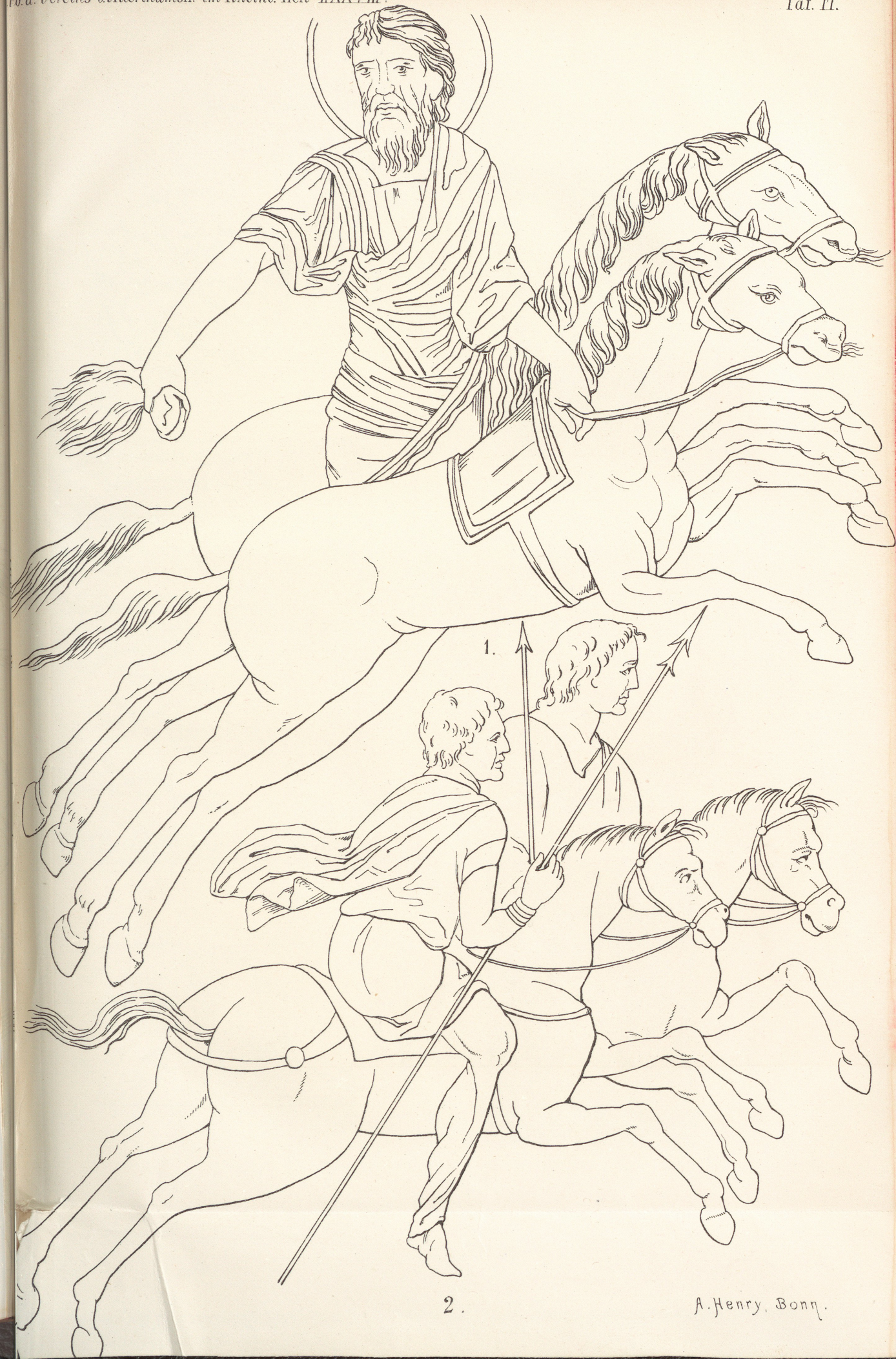


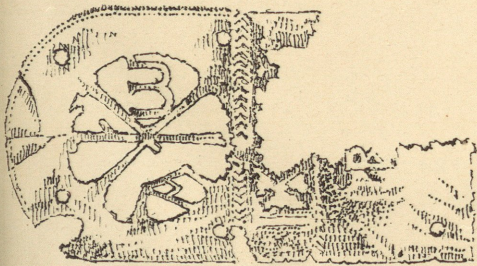
2.

The oden *aus rex.*

.Odoachar *Rex.*

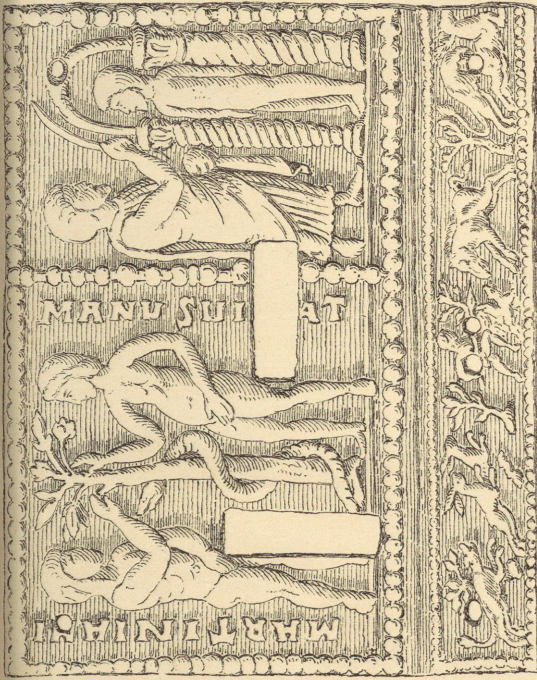






1/2 nat. Grösse.

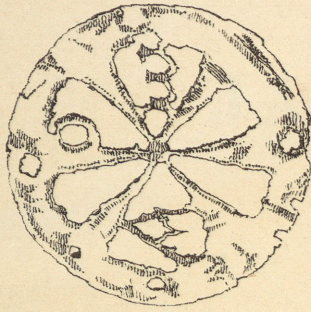
Zierstück—Silber.



Natürl. Grösse

Silbernes

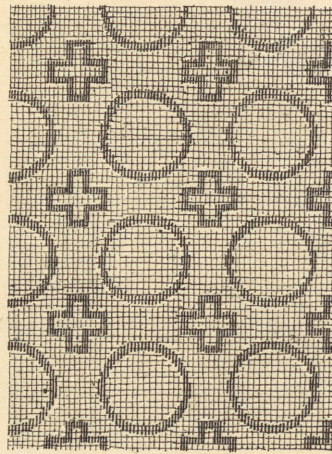
Schlossblech.



2/3 nat. Grösse.

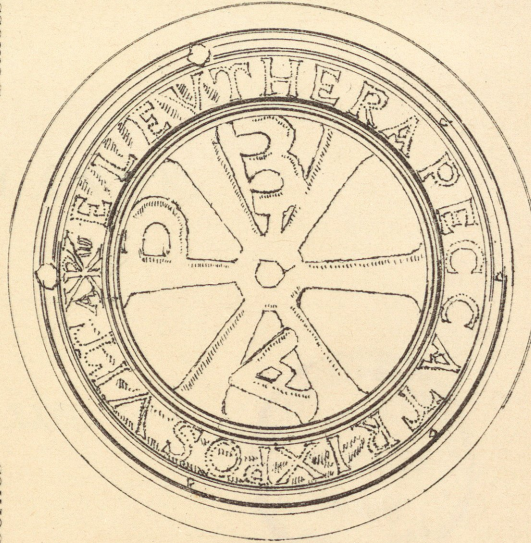
Zierscheibe

Gold



Nat. Grösse.

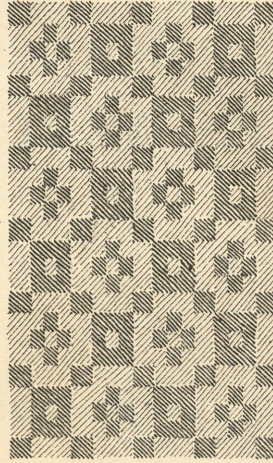
Stoffrest—Seide



1/2 nat. Grösse.

Votivgabe

Silber



Nat. Grösse.

Stoffrest—Seide

Fundstücke aus dem Paulinus-Grabe zu Trier.