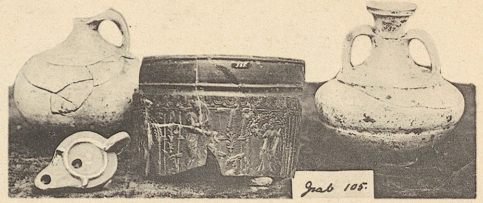
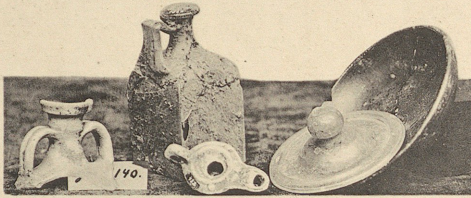




1



2



3



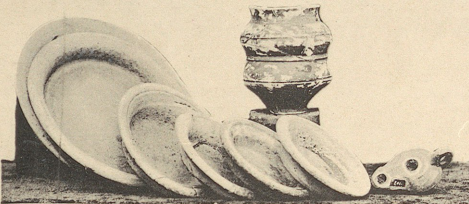
4



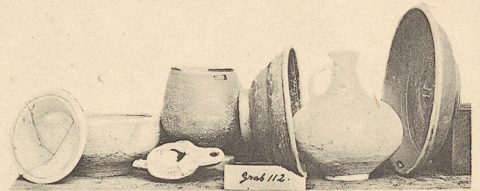
5



6



7



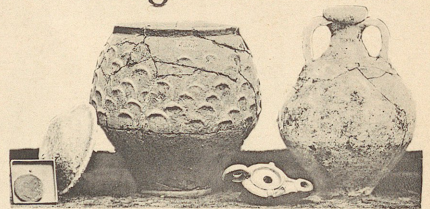
8



9



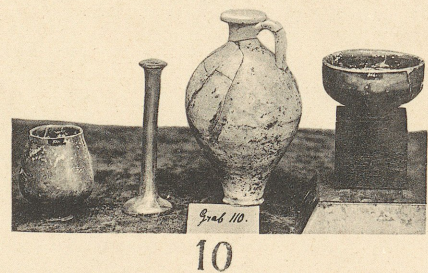
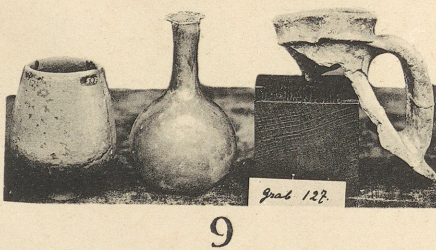
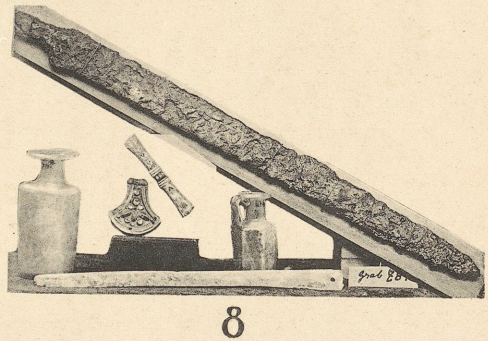
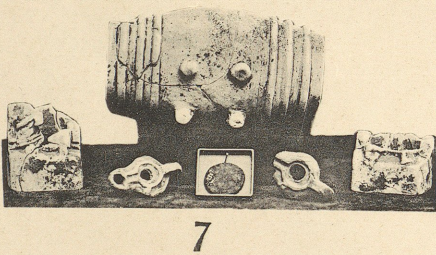
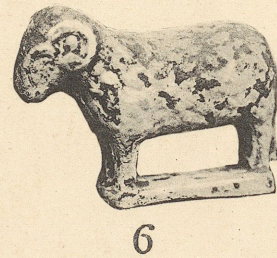
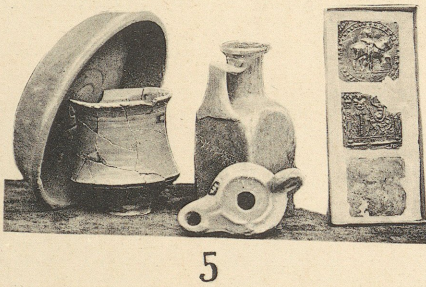
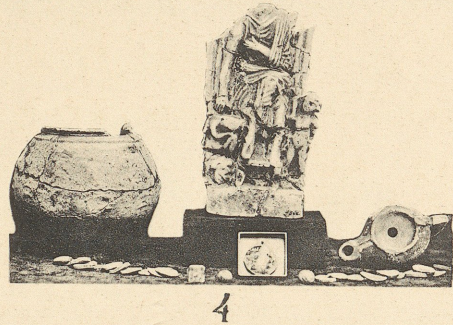
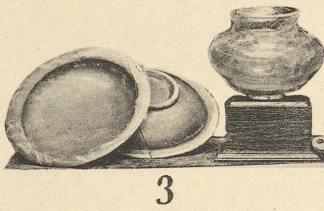
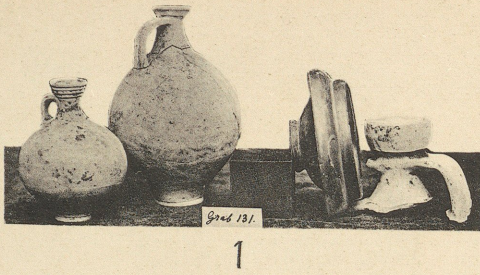
11



10



12



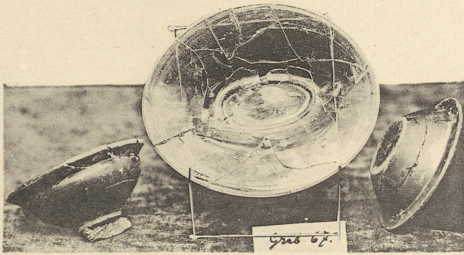
Röm. Gräber aus Remagen.



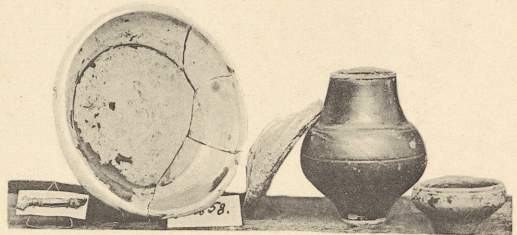
1



2



3



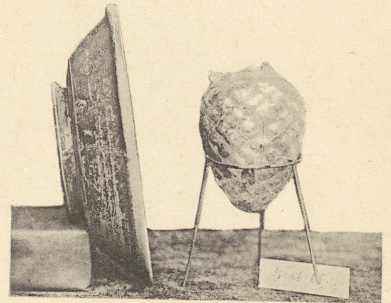
6



4



5



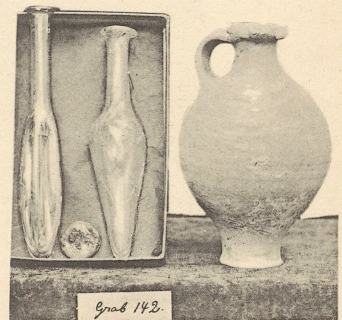
7



9

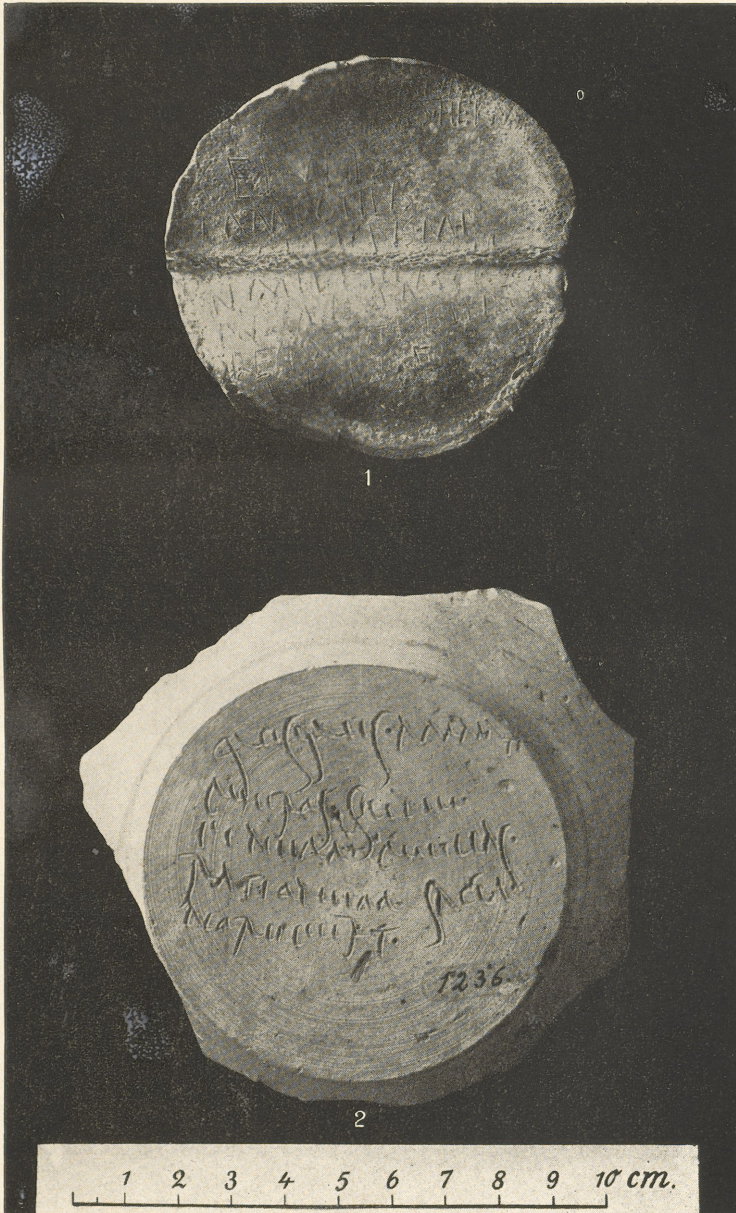


8

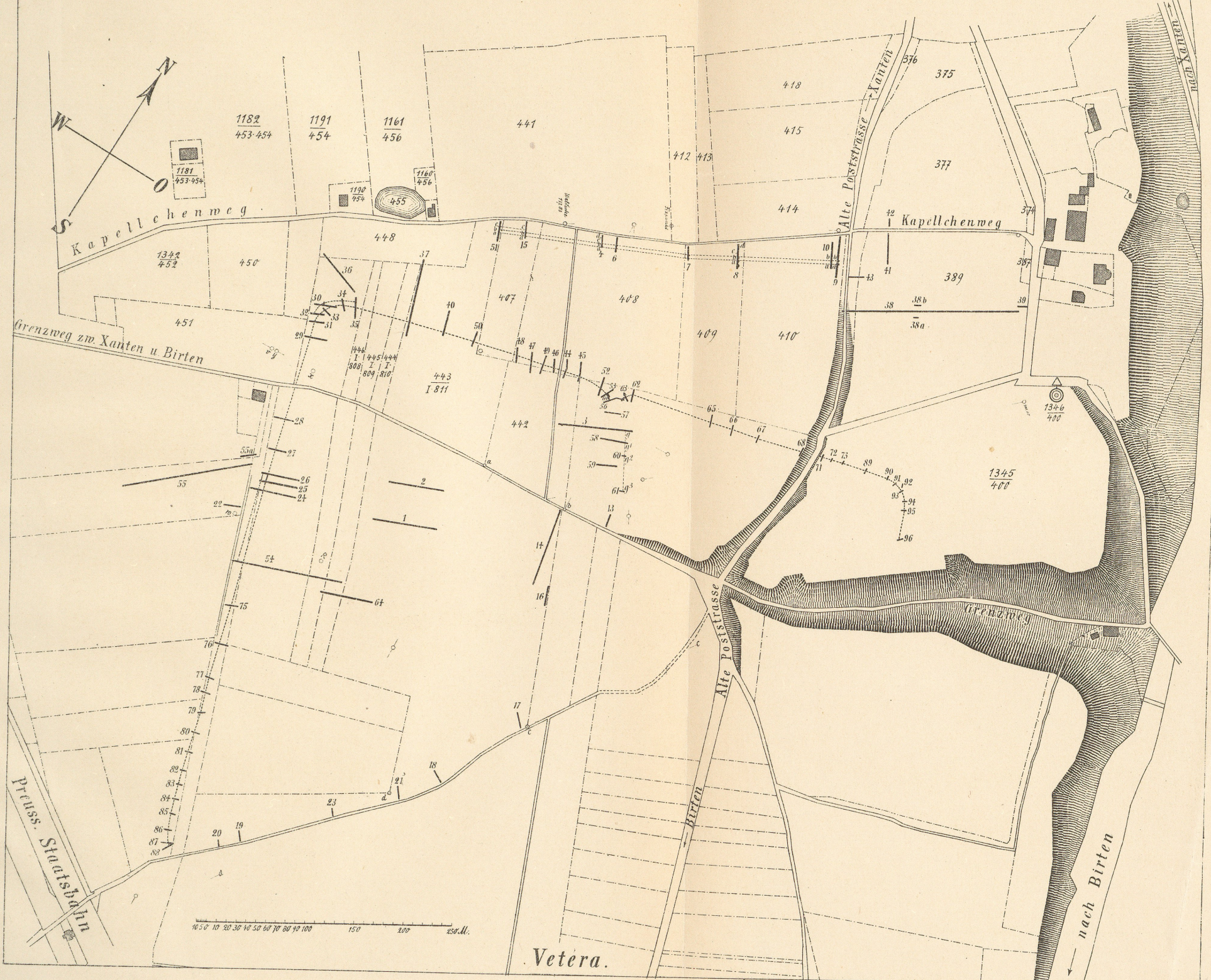


10

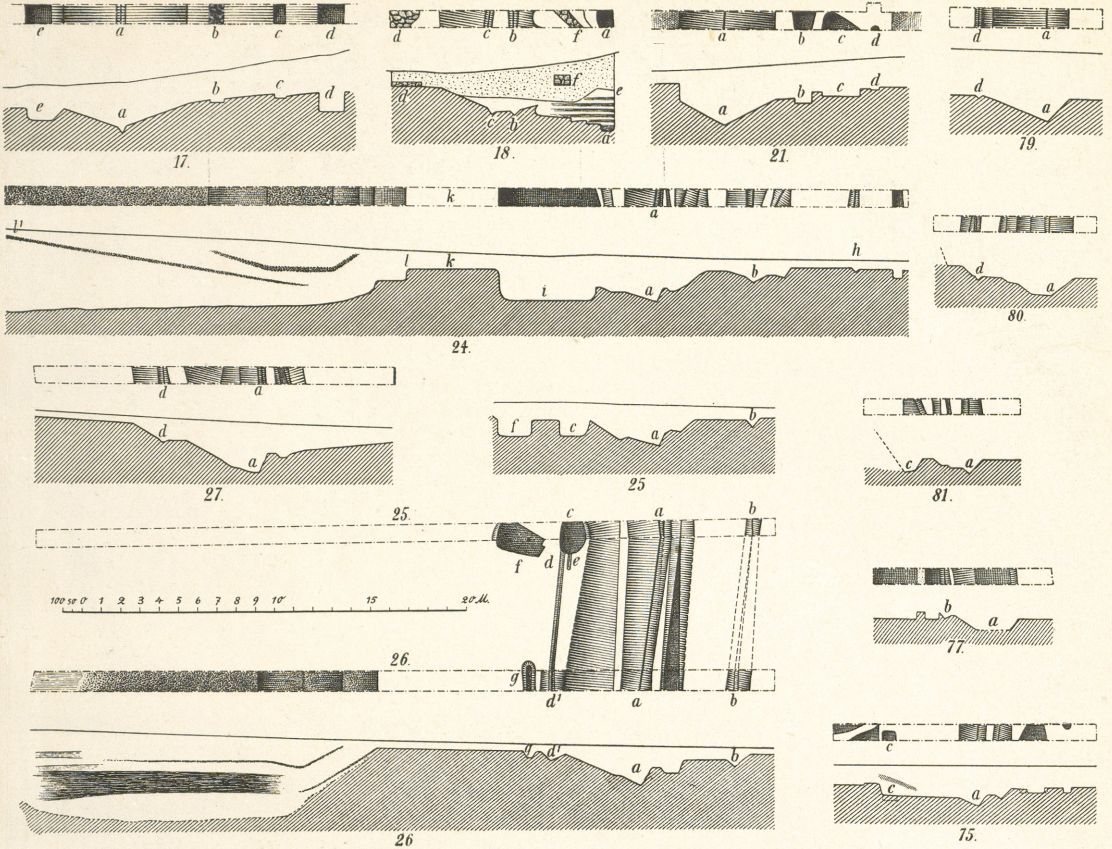
Röm. Gräber aus Remagen.



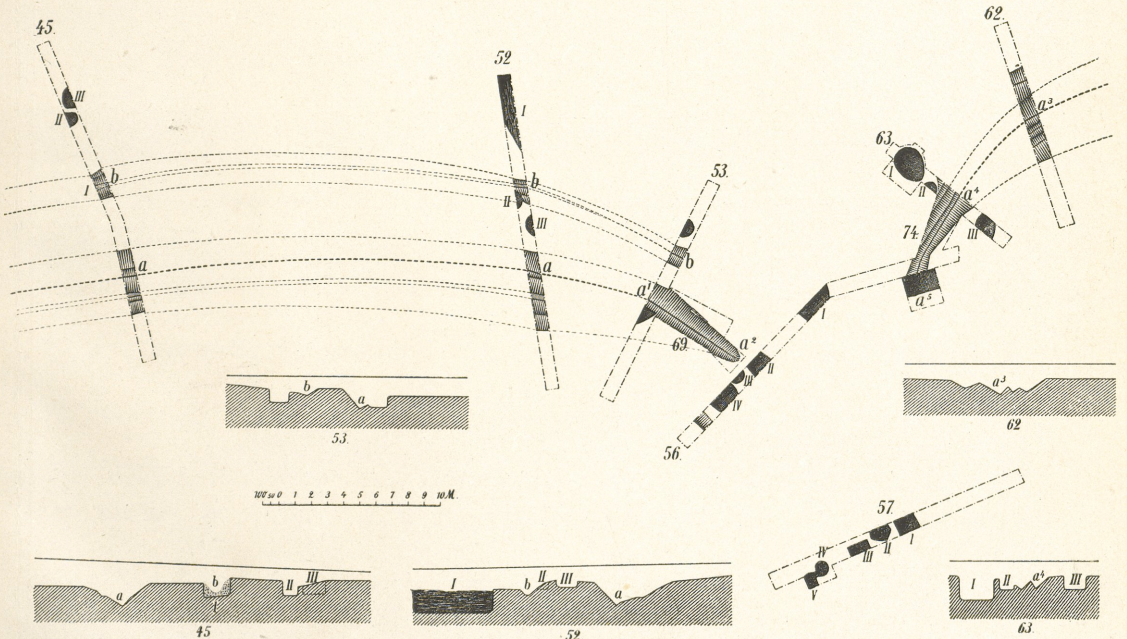
1. Bleitafelchen aus Cumae.
2. Krugboden aus Remagen.



Vetera.

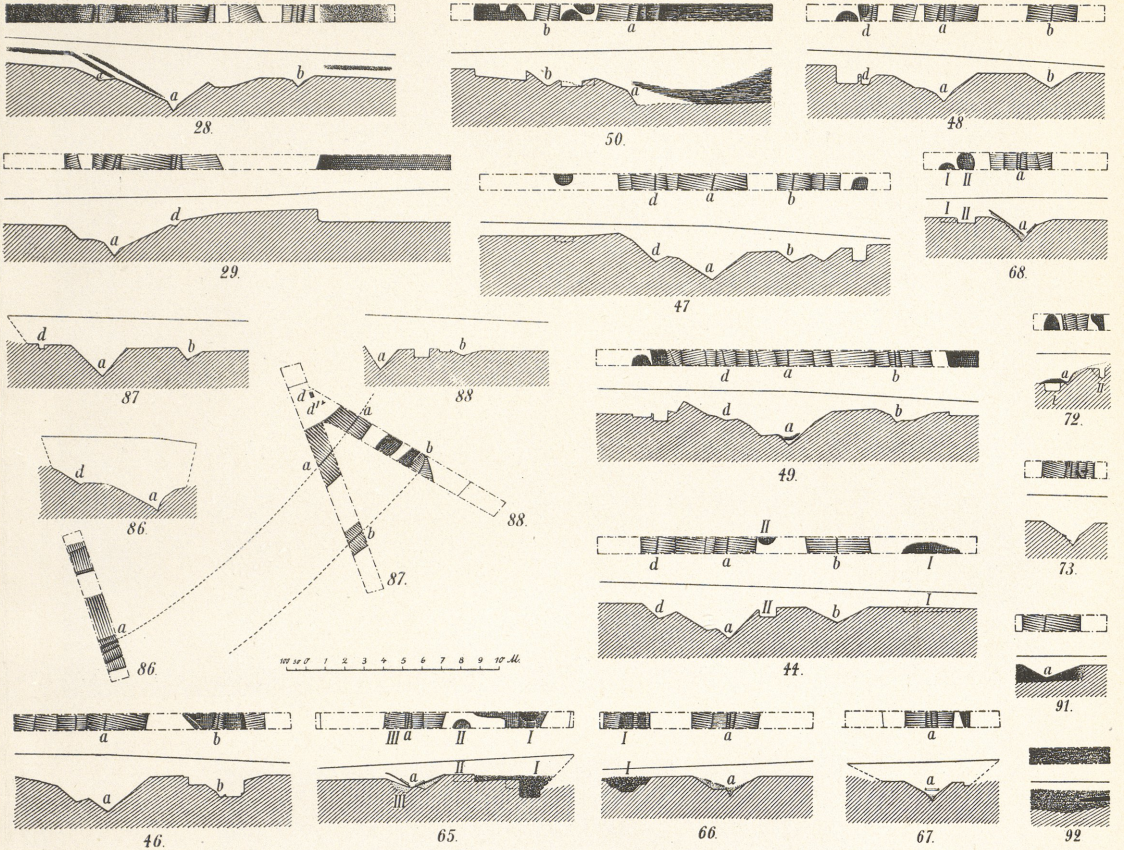


1.

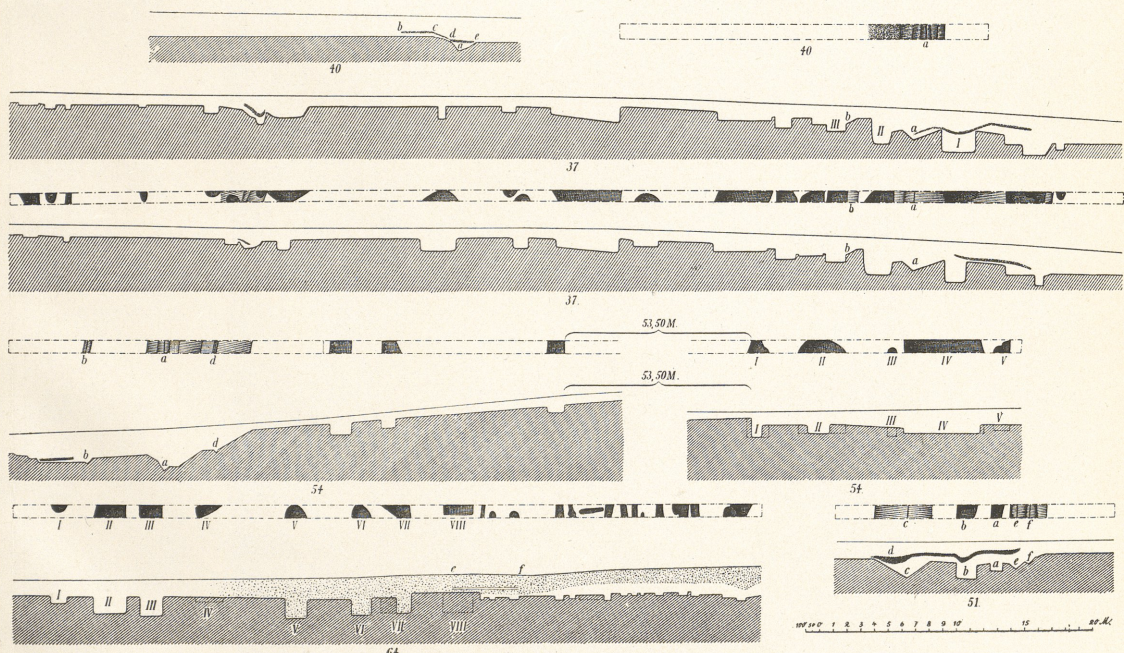


2.

Vetera.



1.



2.

Vetera.

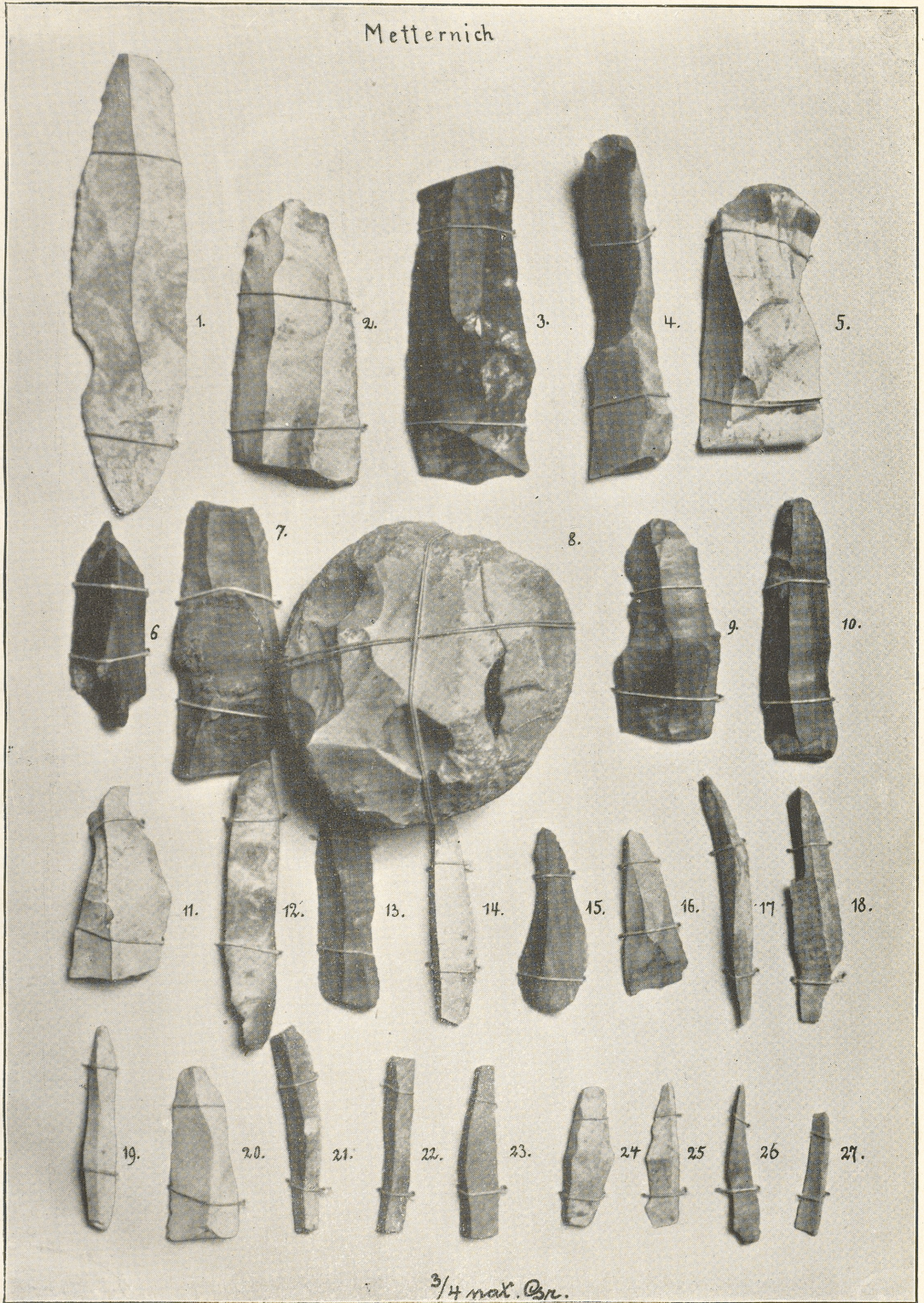


1.



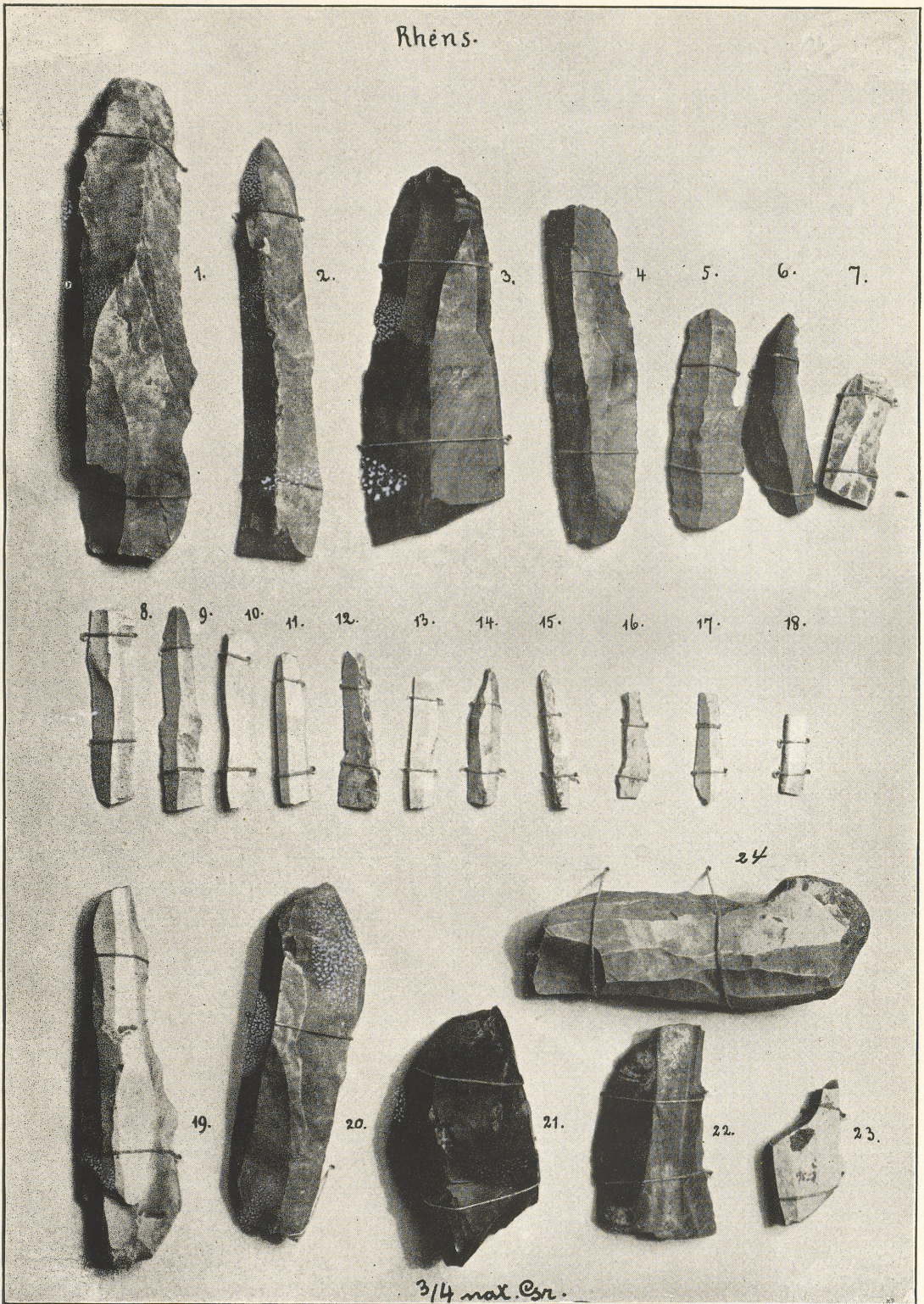
2.

Metternich

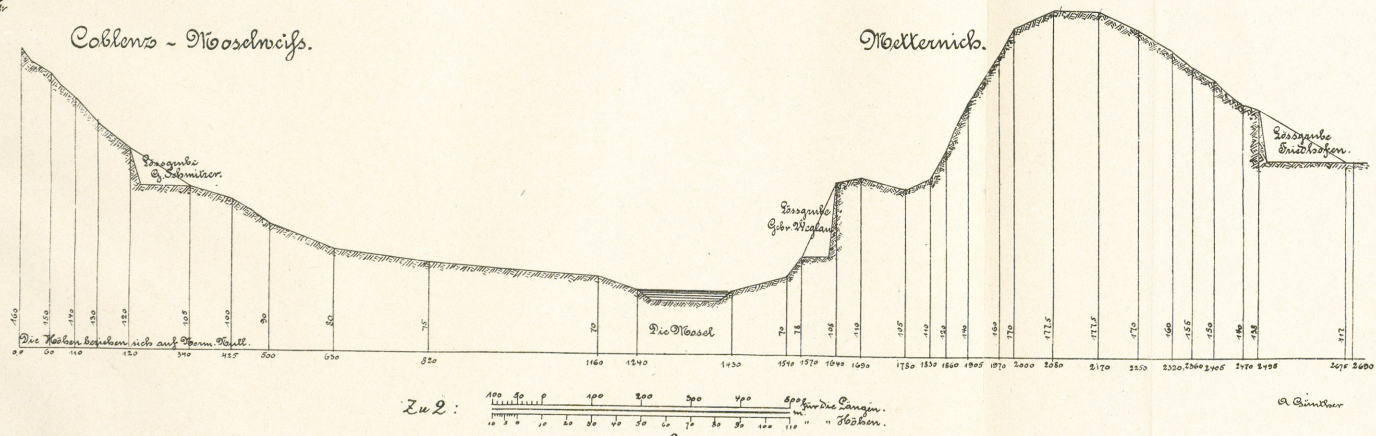
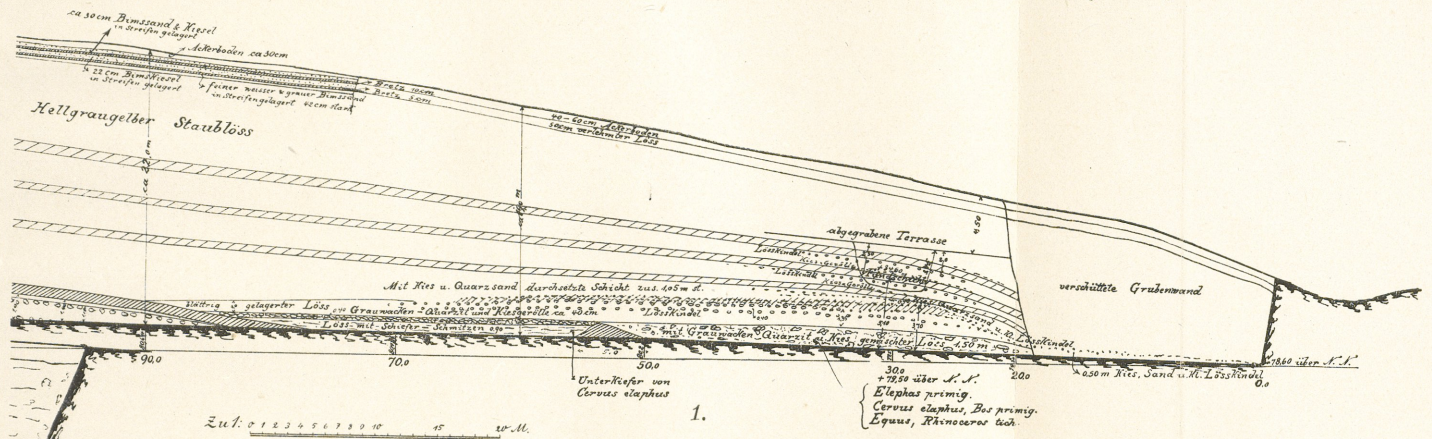
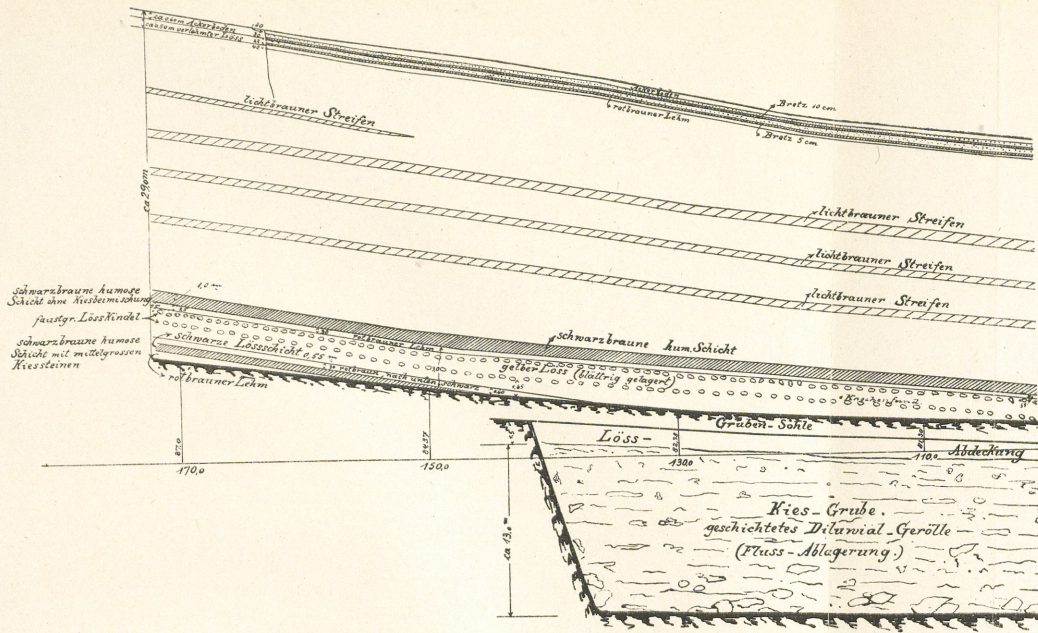


Silexartefacte aus Metternich.

Rhens.



Silexartefacte aus Rhens.



1. Lössprofil der Grube Weglau bei Metternich.
 2. Lössprofil bei Metternich und Moselweiss.

A. Buntker