



1. Grabstein des Blussus in Mainz.



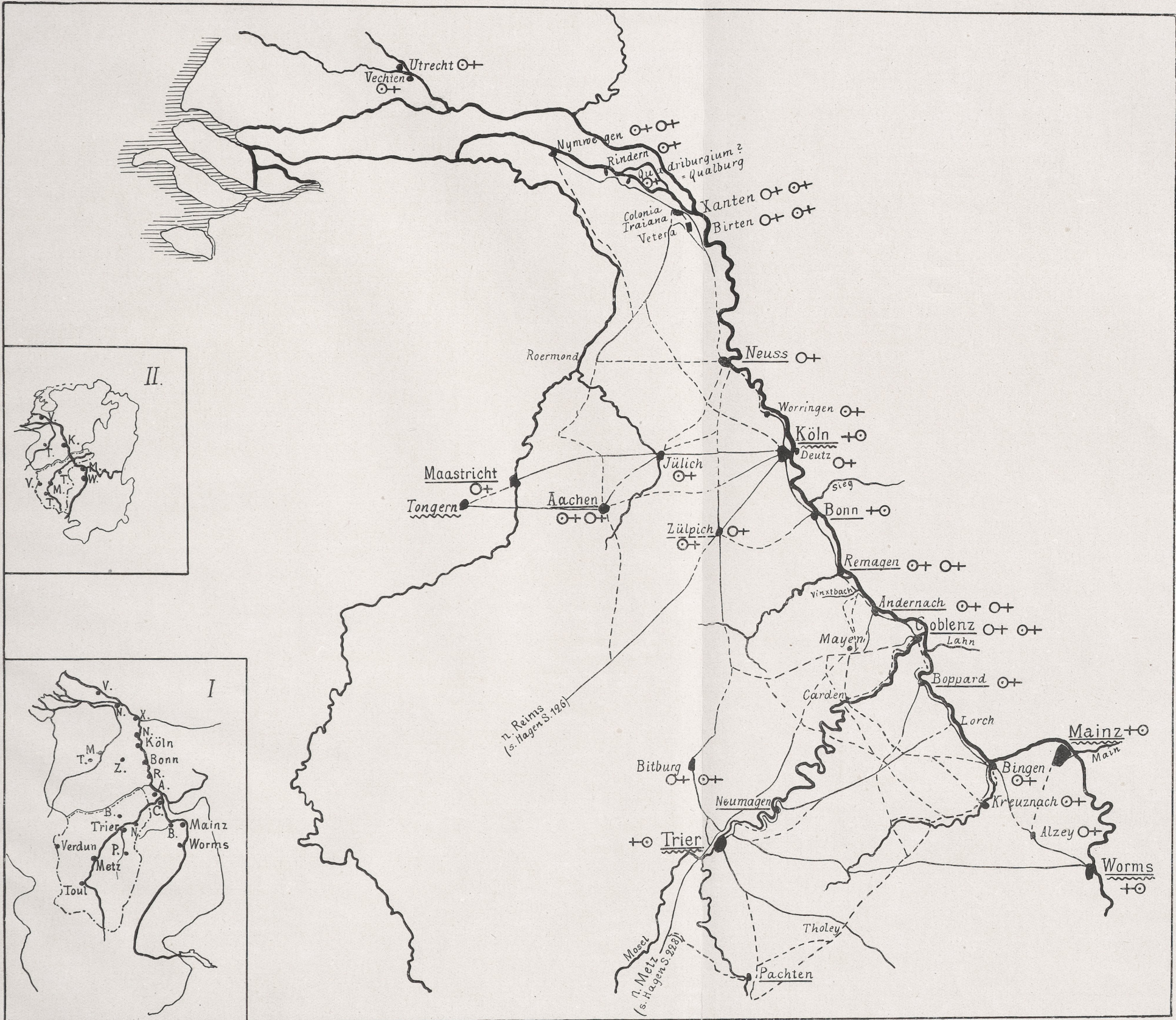
2. Grabrelief aus Neumagen in Trier.



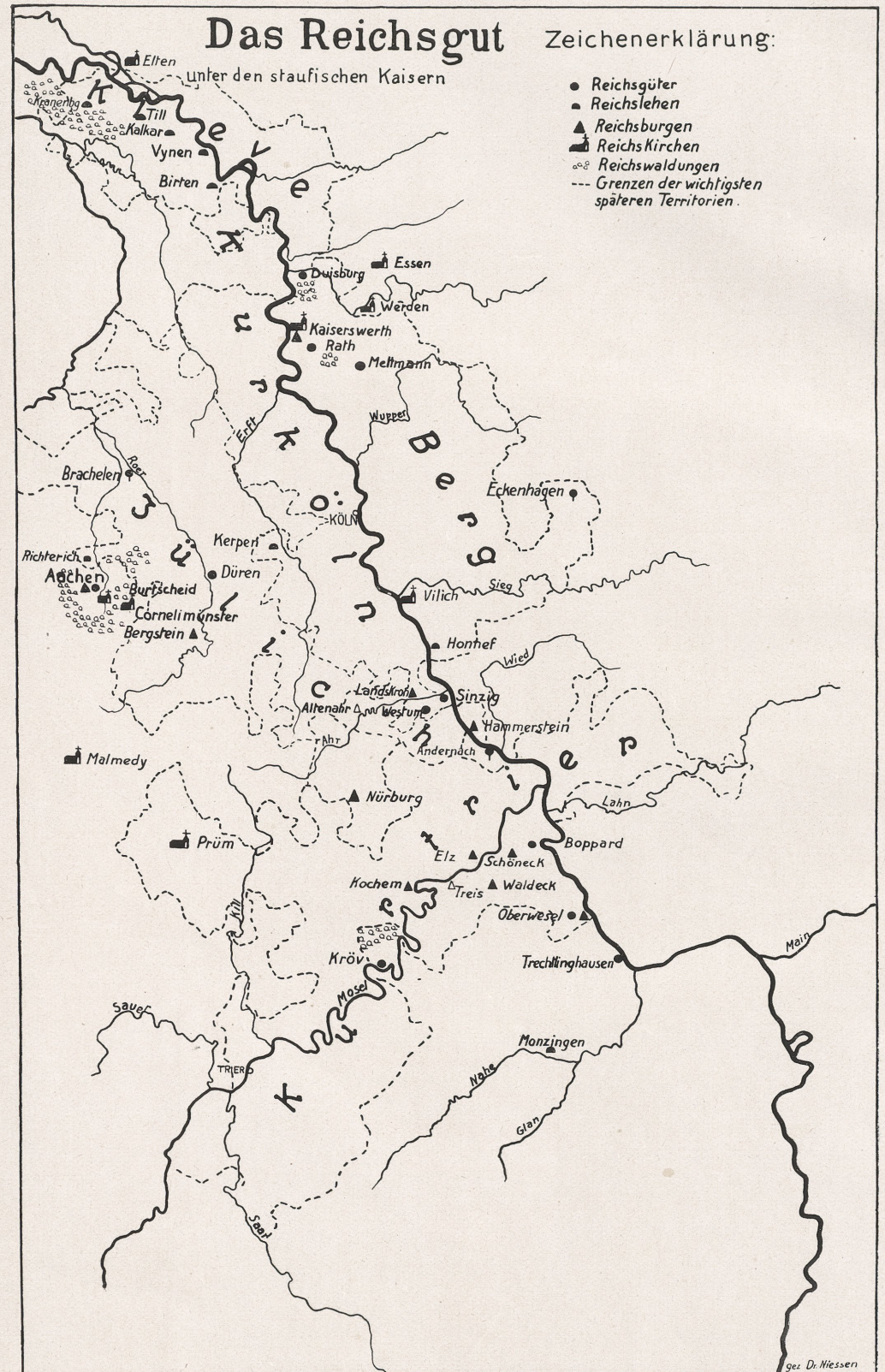
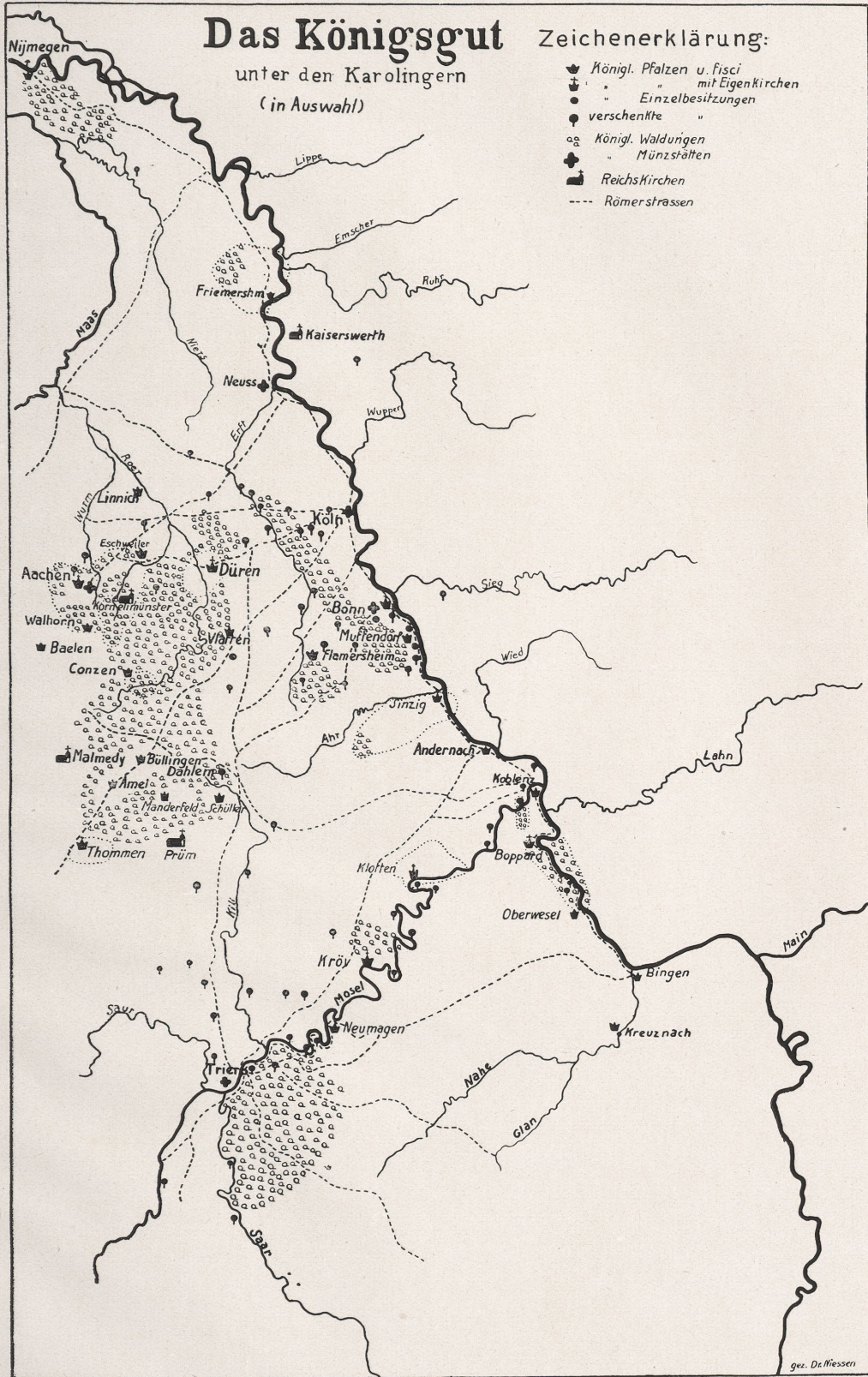
1. Grabstein des Firmus aus Andernach in Bonn.

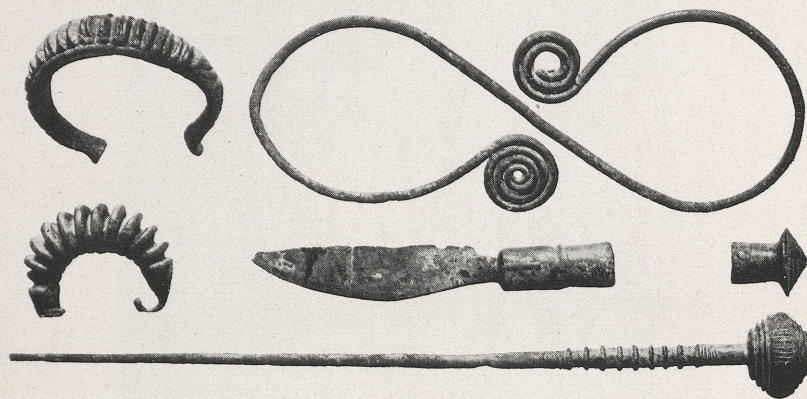


2. Grabstein des C. Faltonius in Mainz.

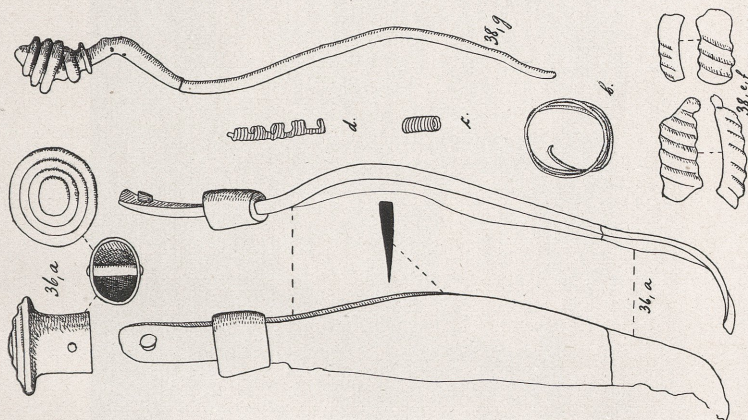


Die Anfänge des Christentums im Gebiet des Nieder- und Mittelrheins und der Mosel (vgl. S. 112 f.).

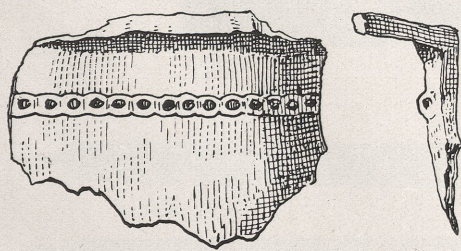




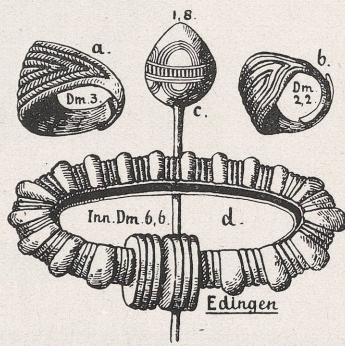
1.



2.

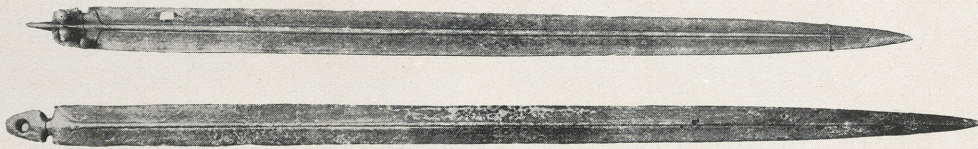


3.

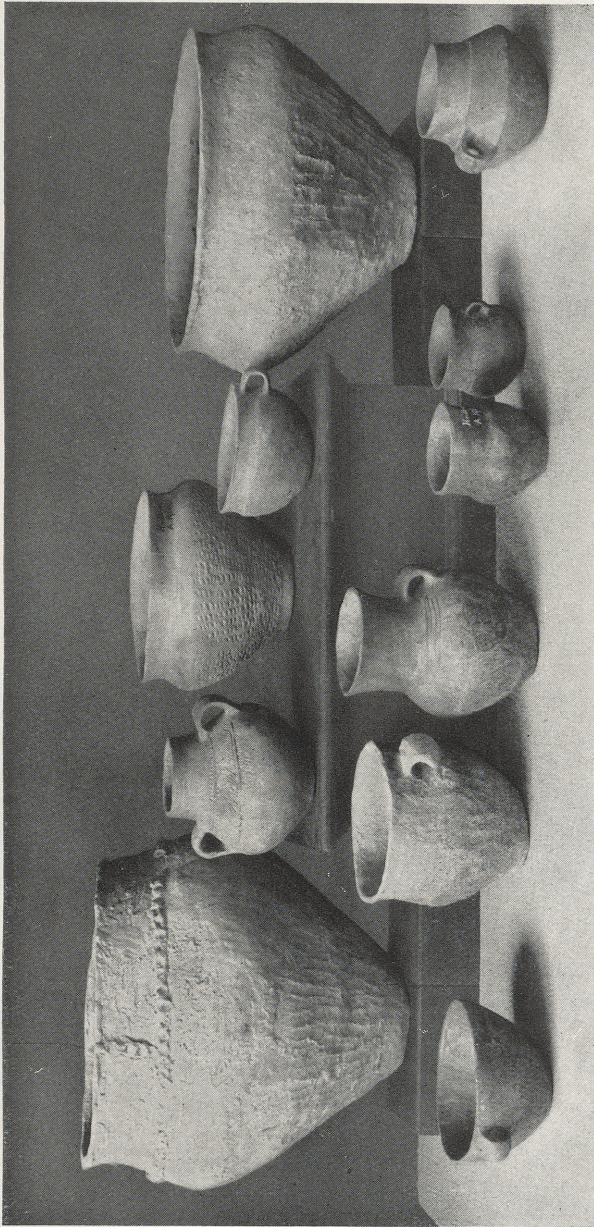


4.

Urnenfelderkultur in Süddeutschland (vgl. S. 211 f.).



1.

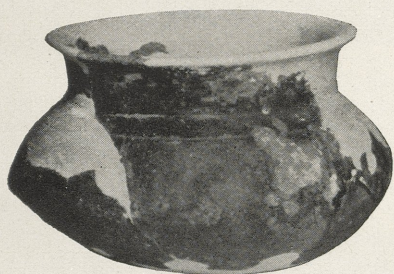


2.

Urnenfelderkultur in Süddeutschland (vgl. S. 211 f.).



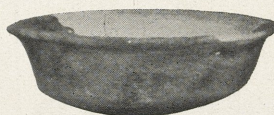
1.



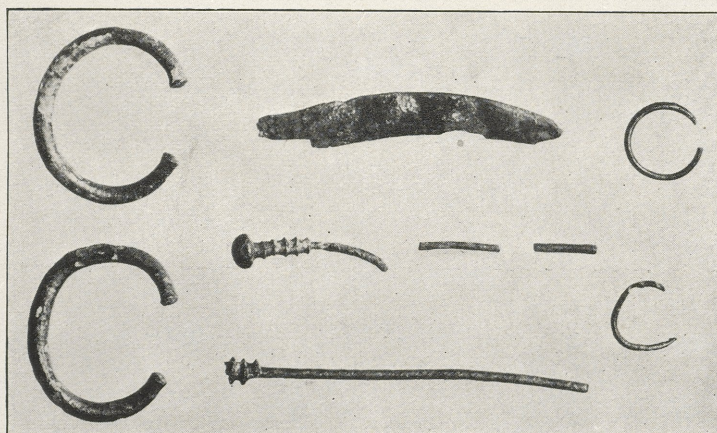
2.



3.

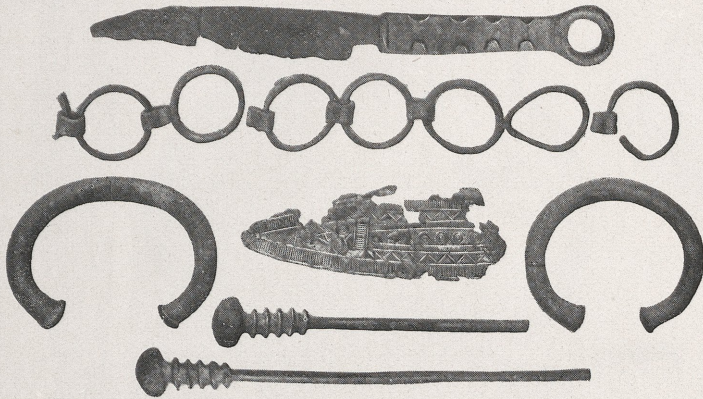


4.

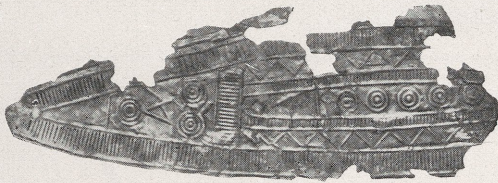


5-11.

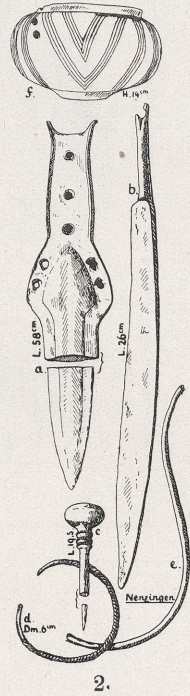
Urnenfelderkultur in Süddeutschland (vgl. S. 211 f.).



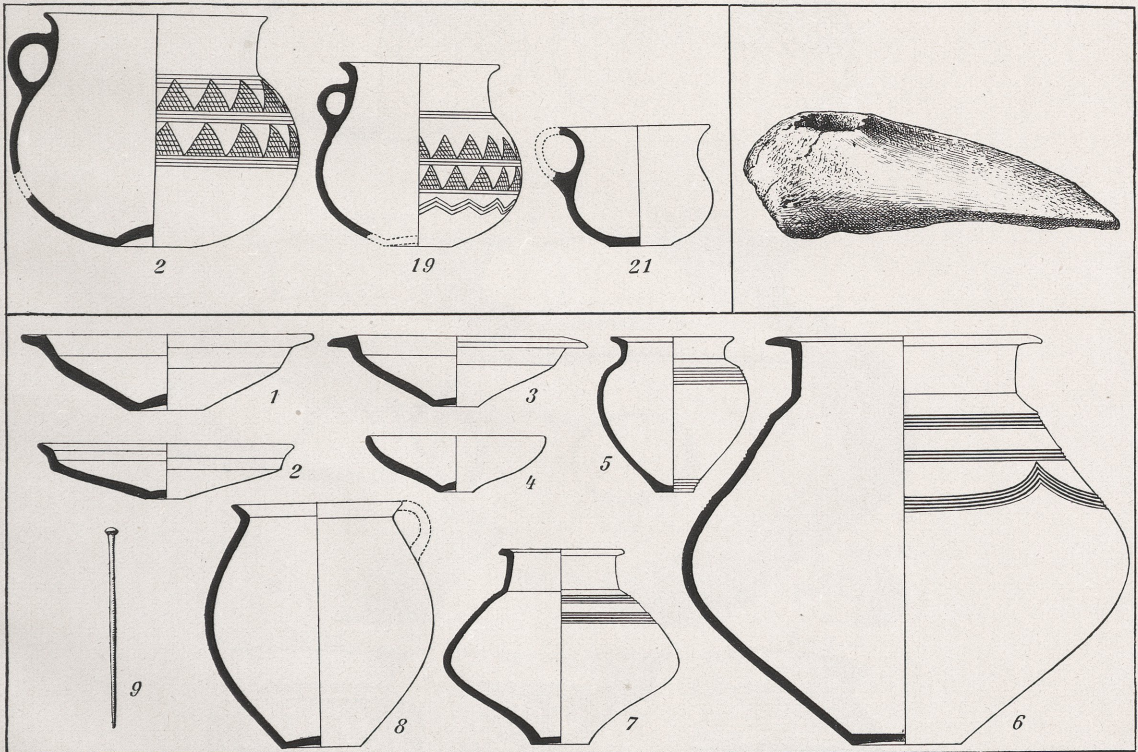
1 a.



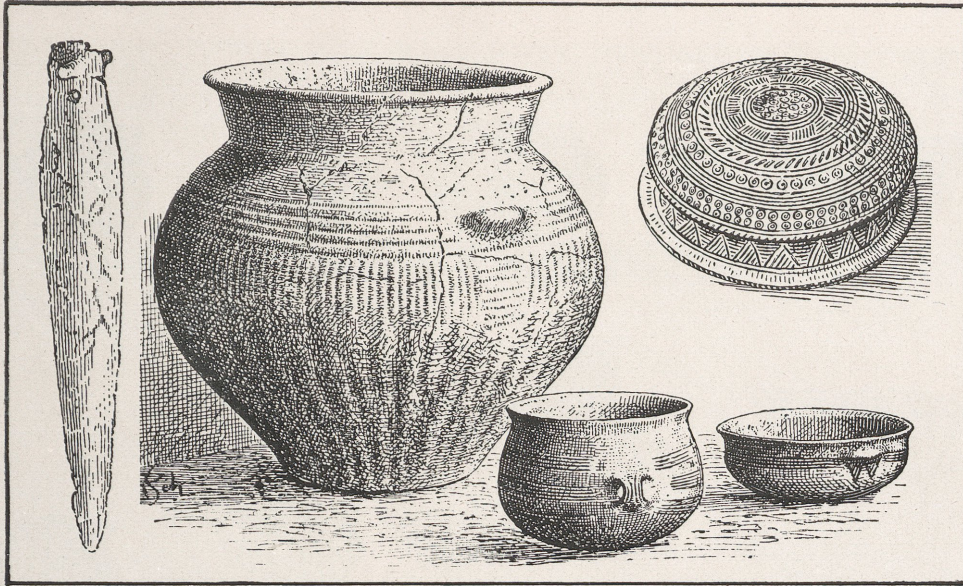
1 b.



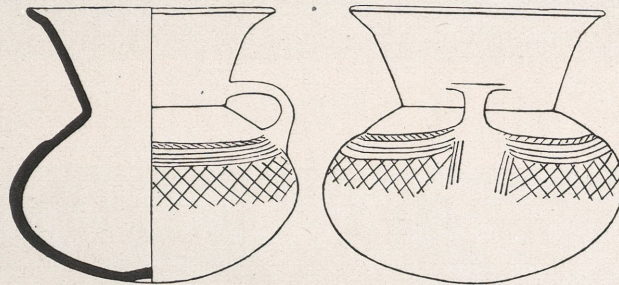
2.



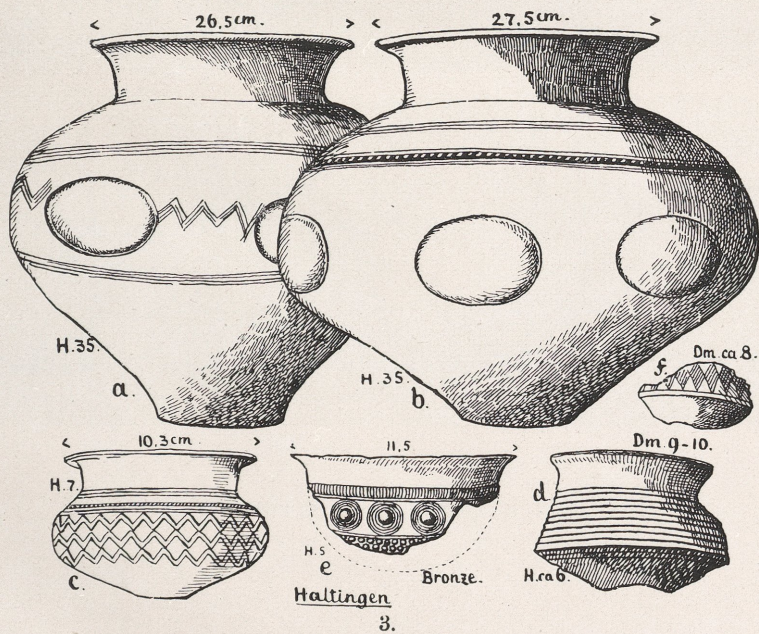
3.



1.



2.



Urnenfelderkultur in Süddeutschland (vgl. S. 211 f.).

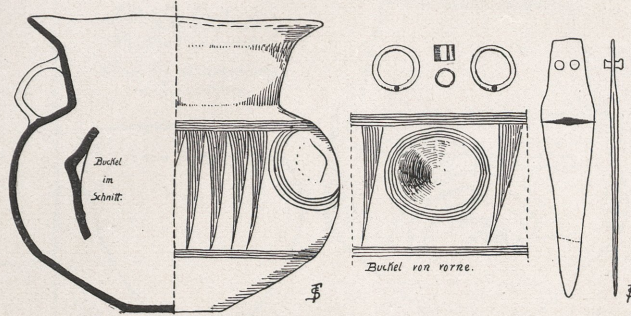


1

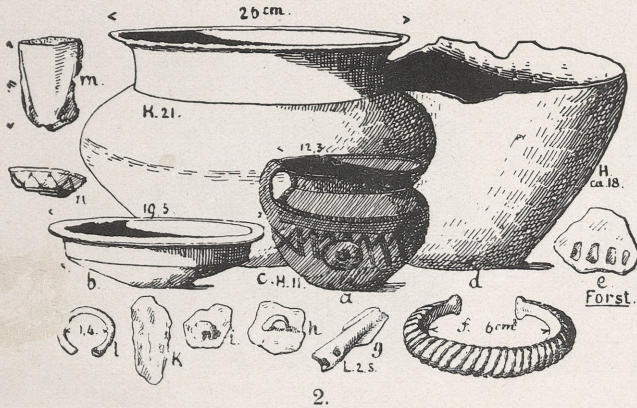


2.

Urnenfelderkultur in Süddeutschland (vgl. S. 211 f.).



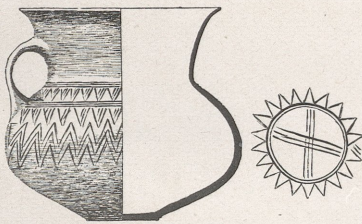
1.



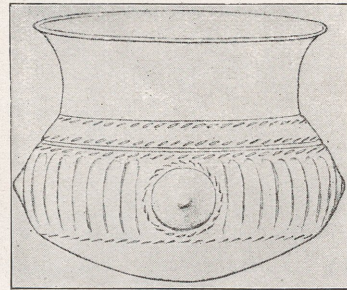
2.



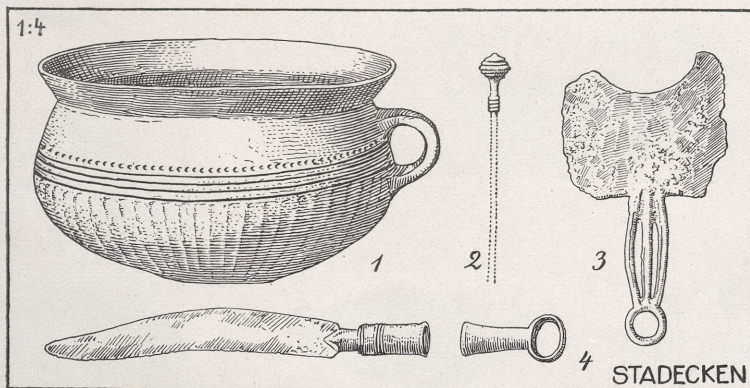
3.



4.

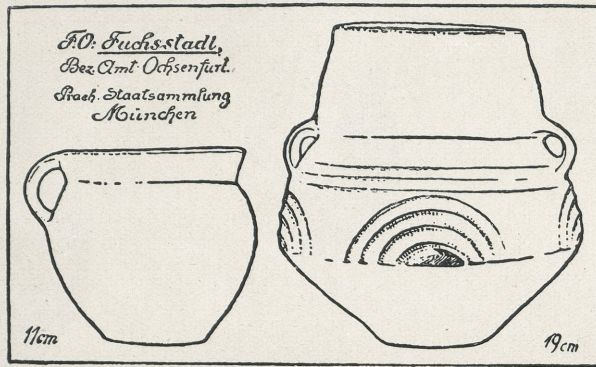


5.



6.

Urnenfelderkultur in Süddeutschland (vgl. S. 211 f.).

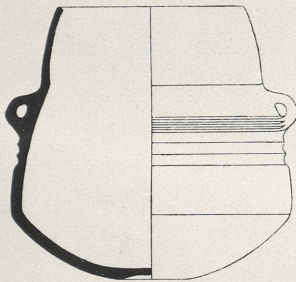


1.

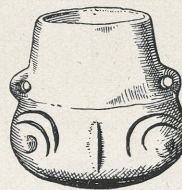


2.

3.



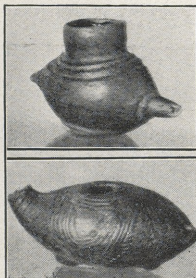
4.



5.



6.



7.



8.



2.



1.

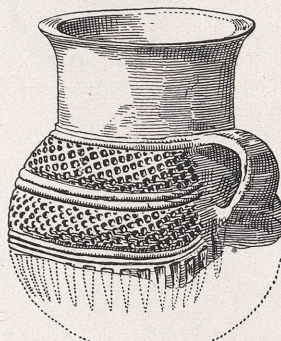


ADLERBERG

3.



4.



ADLERBERG

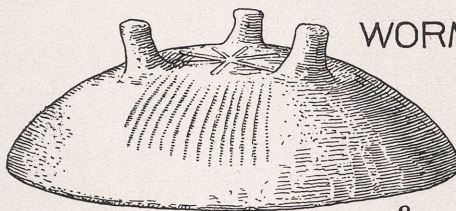
5.



4.

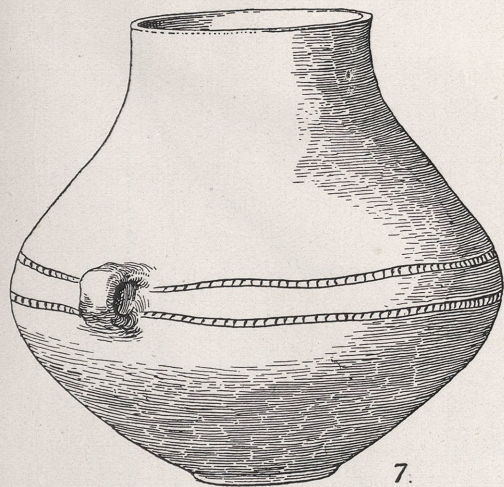


6.



WORMS

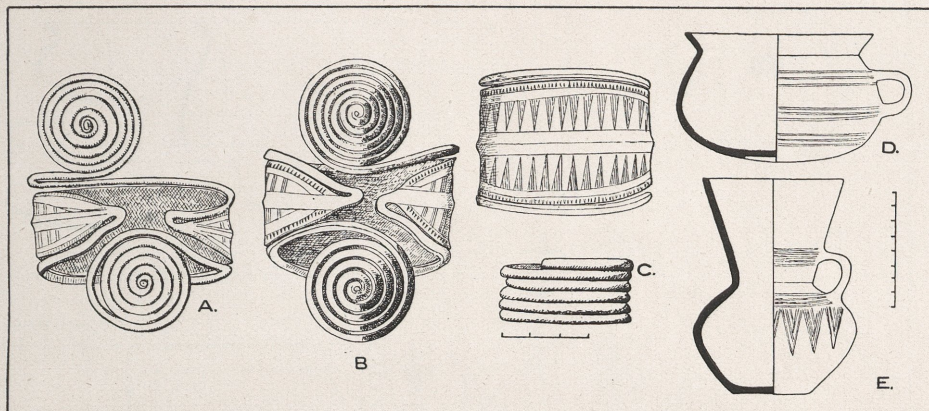
8.



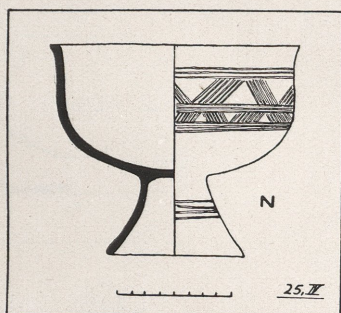
7.



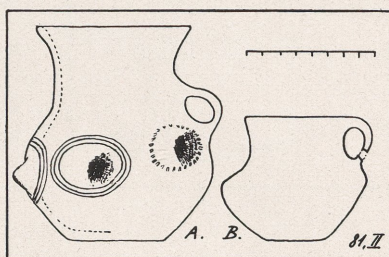
8.



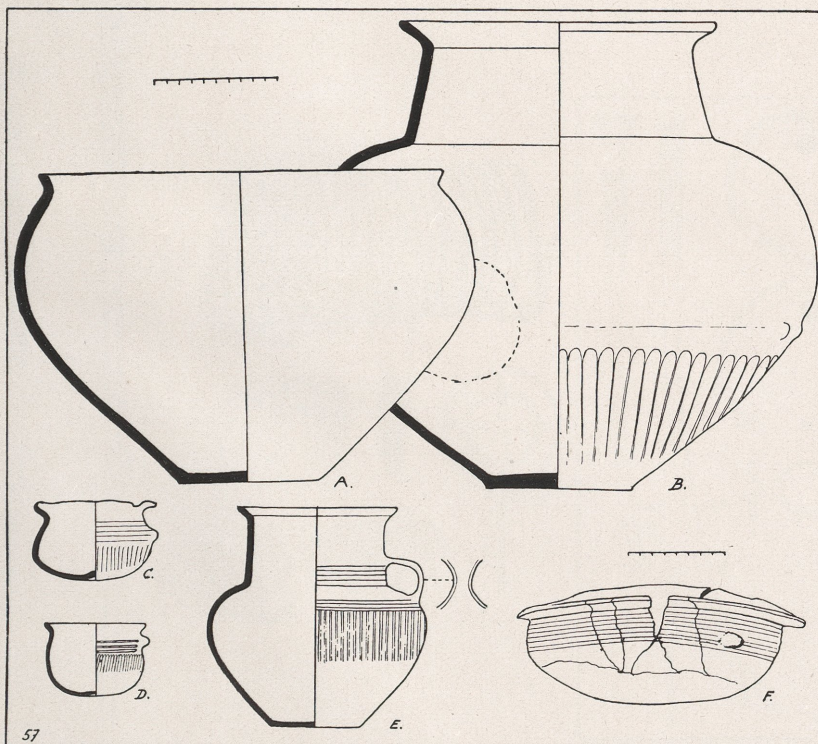
1.



2.

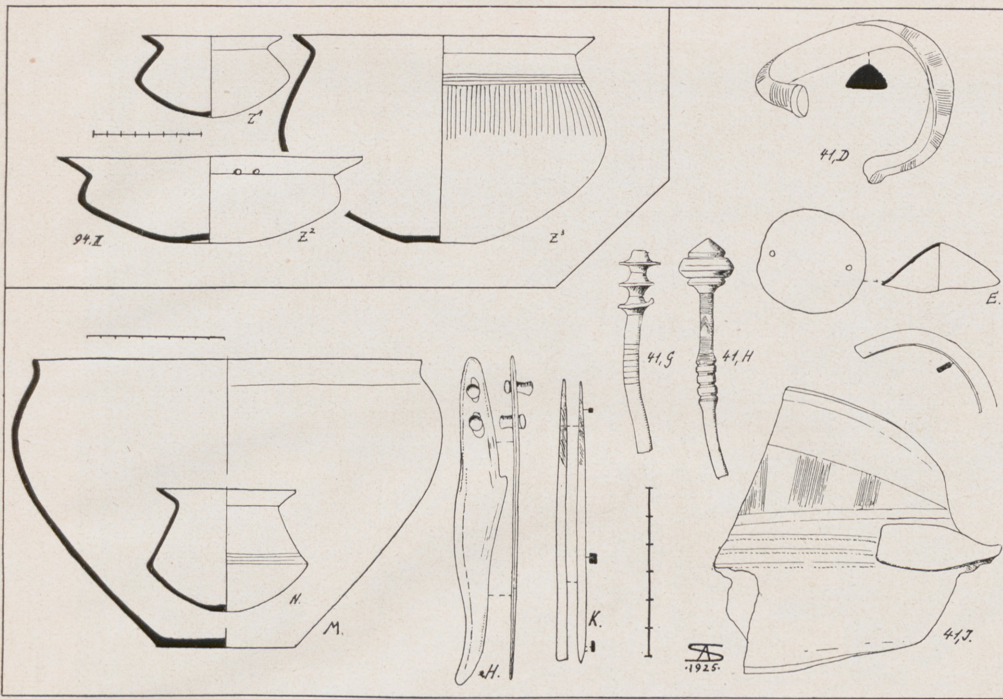


3.

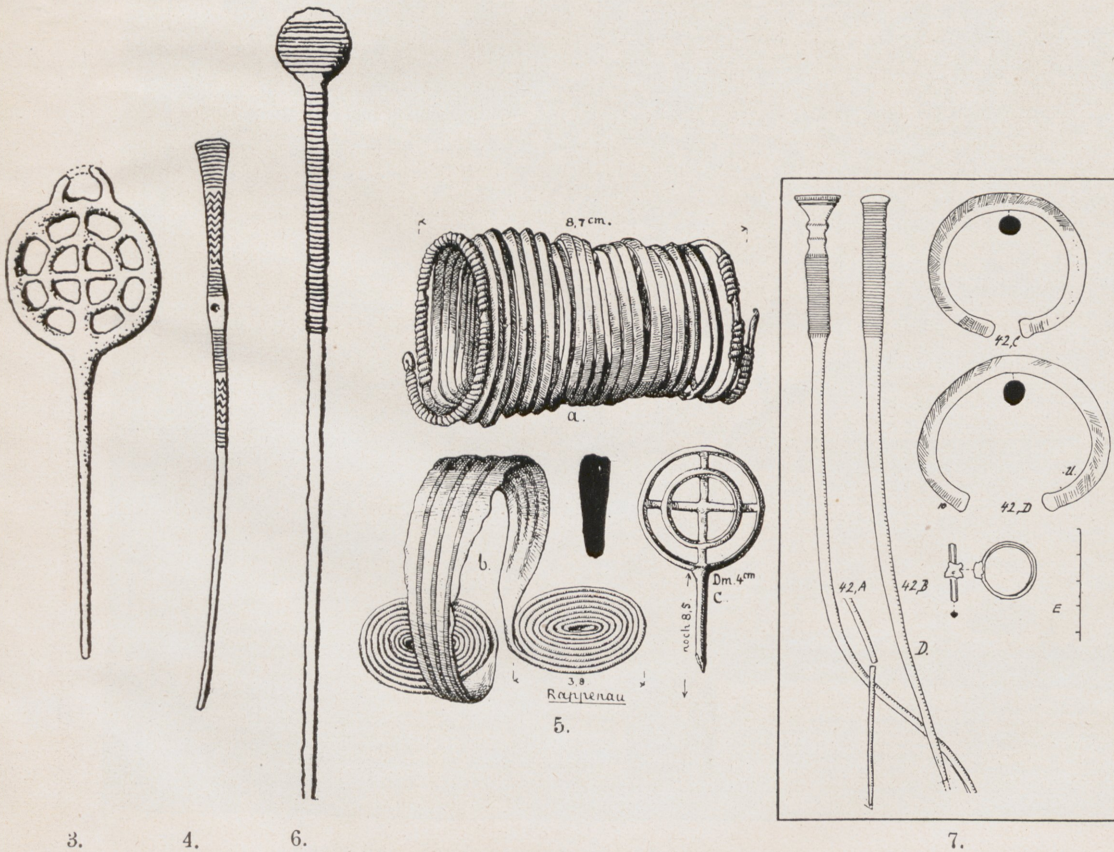


4.

Urnenfelderkultur in Süddeutschland (vgl. S. 211 f.).



1. u. 2.



3.

4.

6.

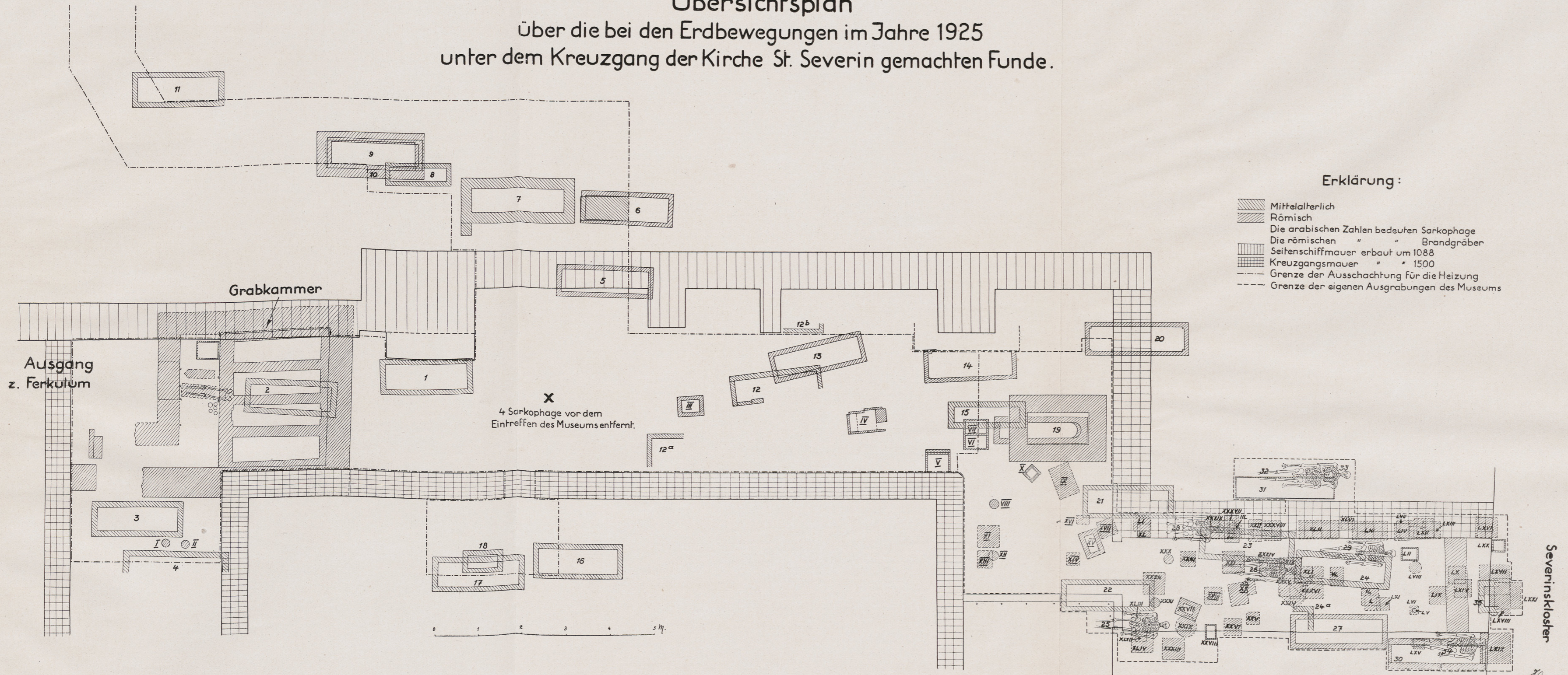
7.

Urnenfelderkultur in Süddeutschland (vgl. S. 211 f.).



Karte der „Lantstrassen“ von Albrecht Glogkendon, Nürnberg 1533. (Phot. von K. Hofmann, Nürnberg, german. Museum.)

Übersichtsplan Über die bei den Erdbewegungen im Jahre 1925 unter dem Kreuzgang der Kirche St. Severin gemachten Funde.



- Erklärung:**
- Mittelalterlich
 - Römisch
 - Die arabischen Zahlen bedeuten Sarkophage
 - Die römischen " " Brandgräber
 - Seitenschiffmauer erbaut um 1088
 - Kreuzgangsmauer " " 1500
 - - - Grenze der Ausschachtung für die Heizung
 - - - Grenze der eigenen Ausgrabungen des Museums

Severinskloster

20



Röm. Mosaikboden aus Münster bei Bingerbrück.