

## ARCHAEOLOGY INDUSTRY CONTACTS

### ARCHAEOLOGY DATA SERVICE

Tel 01904 323954

Web [www.archaeologydataservice.ac.uk](http://www.archaeologydataservice.ac.uk)

### ARCHAEOLOGY SCOTLAND

Tel 0300 012 9878

Web [www.archaeologyscotland.org.uk](http://www.archaeologyscotland.org.uk)

### ARCHIVES WALES

Tel 01970 632800

Web <https://archives.wales/>

### ARTS COUNCIL ENGLAND

Tel 0161 934 4317

Web [www.artscouncil.org.uk](http://www.artscouncil.org.uk)

### ASSOCIATION FOR ENVIRONMENTAL ARCHAEOLOGY

Web [www.envarch.net](http://www.envarch.net)

### ASSOCIATION FOR INDUSTRIAL ARCHAEOLOGY

Web [www.industrial-archaeology.org](http://www.industrial-archaeology.org)

### ASSOCIATION FOR STUDIES IN THE CONSERVATION OF HISTORIC BUILDINGS

Web [www.aschb.org.uk](http://www.aschb.org.uk)

### ASSOCIATION OF LOCAL GOVERNMENT ARCHAEOLOGICAL OFFICERS

Tel 01223 728592

Web [www.algao.org.uk](http://www.algao.org.uk)

### CADW

Tel 0300 0256000

Web <https://cadw.gov.wales/>

### CATHEDRAL COMMUNICATIONS

Tel 01747 871717

Web [www.buildingconservation.com](http://www.buildingconservation.com)

### CHARTERED INSTITUTE OF BUILDING

[www.ciob.org](http://www.ciob.org)

### THE CHURCHES CONSERVATION TRUST

Tel 0845 303 2760

Web [www.visitchurches.org.uk](http://www.visitchurches.org.uk)

### CHURCH MONUMENTS SOCIETY

Web [www.churchmonumentsociety.org](http://www.churchmonumentsociety.org)

### CONSTRUCTION SKILLS CERTIFICATION SCHEME

Tel 0344 994 4777

Web [www.cscs.uk.com](http://www.cscs.uk.com)

### CIVIL ENGINEERING CONTRACTORS ASSOCIATION

Tel 020 7340 0450

Web [www.ceca.co.uk](http://www.ceca.co.uk)

### COUNCIL FOR BRITISH ARCHAEOLOGY

Tel 01904 671417

Web [www.archaeologyuk.org](http://www.archaeologyuk.org)

### DEFENSE INFRASTRUCTURE ORGANISATION, MINISTRY OF DEFENCE

Tel 020 7218 9000

Web [www.gov.uk/government/organisations/ministry-of-defence](http://www.gov.uk/government/organisations/ministry-of-defence)

### DEPARTMENT FOR COMMUNITIES (NI): HISTORIC ENVIRONMENT DIVISION

Tel 028 9081 9226

Web [www.communities-ni.gov.uk](http://www.communities-ni.gov.uk)

### DEPARTMENT FOR CULTURE, MEDIA AND SPORT

Tel 020 7211 6000

Web [www.culture.gov.uk](http://www.culture.gov.uk)

### ENVIRONMENT AGENCY

Tel 03708 506 506

Web [www.gov.uk/government/organisations/environment-agency](http://www.gov.uk/government/organisations/environment-agency)

### EUROPEAN ASSOCIATION OF ARCHAEOLOGISTS

Tel 00 420 7337016979

Web [www.e-a-a.org](http://www.e-a-a.org)

### FEDERATION OF ARCHAEOLOGICAL MANAGERS AND EMPLOYERS

Tel 0116 243 7581

Web [www.famearchaeology.co.uk](http://www.famearchaeology.co.uk)

### THE GARDENS TRUST

Tel 020 7608 2409

Web <http://thegardenstrust.org/>

### HEALTH AND SAFETY EXECUTIVE

Tel 0300 003 1747

Web [www.hse.gov.uk](http://www.hse.gov.uk)

### THE HERITAGE ALLIANCE

Tel 020 72330 500

Web [www.theheritagealliance.org.uk](http://www.theheritagealliance.org.uk)

### HERITAGE FUND

Tel 020 7591 6000

Web [www.hlf.org.uk](http://www.hlf.org.uk)

### HIGHWAYS ENGLAND

Tel 0300 123 5000

Web [www.gov.uk/government/organisations/highways-england](http://www.gov.uk/government/organisations/highways-england)

### HISTORIC ENGLAND (LONDON)

Tel 020 7973 3700

Web [www.historicengland.org.uk](http://www.historicengland.org.uk)

### HISTORIC ENGLAND (FORT CUMBERLAND)

Tel 023 9285 6704

Web [www.historicengland.org.uk](http://www.historicengland.org.uk)

### HISTORIC ENGLAND (SWINDON)

Tel 01793 445050

Web [www.historicengland.org.uk](http://www.historicengland.org.uk)

### HISTORIC GARDENS FOUNDATION

Tel 020 7633 9165

Web [www.historicgardens.org](http://www.historicgardens.org)

### HISTORIC HOUSES ASSOCIATION

Tel 020 7259 5688

Web [www.historichouses.org/](http://www.historichouses.org/)

### HISTORIC ENVIRONMENT SCOTLAND

Tel 0131 668 8600

Web [www.historicenvironment.scot](http://www.historicenvironment.scot)

### INSTITUTE OF ARCHAEOLOGISTS OF IRELAND

Tel 00 353 1 6629517

Web [www.iai.ie](http://www.iai.ie)

### INSTITUTE OF CONSERVATION

Tel 020 3142 6799

Web [www.icon.org.uk](http://www.icon.org.uk)

### INSTITUTE OF ENVIRONMENTAL MANAGEMENT & ASSESSMENT

Tel 01522 540 069

Web [www.iema.net](http://www.iema.net)

### INSTITUTE OF HISTORIC BUILDING CONSERVATION

Tel 01747 873133

Web [www.ihbc.org.uk](http://www.ihbc.org.uk)

**INSTITUTION OF CIVIL ENGINEERS**

Tel 020 7222 7722

Web [www.ice.org.uk](http://www.ice.org.uk)**INTERNATIONAL COUNCIL ON MONUMENTS & SITES UK**

Tel 020 7566 0031

Web [www.icomos-uk.org](http://www.icomos-uk.org)**LOCAL GOVERNMENT ASSOCIATION**

Tel 020 7664 3000

Web [www.local.gov.uk](http://www.local.gov.uk)**LONDON PARKS & GARDENS TRUST**

Tel 020 7839 3969

Web [www.londongardenstrust.org](http://www.londongardenstrust.org)**MANX NATIONAL HERITAGE**

Tel 01624 648000

Web [www.manxnationalheritage.im](http://www.manxnationalheritage.im)**MARITIME & COASTGUARD AGENCY (RECEIVER OF WRECK)**

Tel 020 3817 2575

Web [www.gov.uk/government/groups/receiver-of-wreck](http://www.gov.uk/government/groups/receiver-of-wreck)**MINISTRY OF JUSTICE**

Tel 020 3334 3555

Web [www.gov.uk/government/organisations/ministry-of-justice](http://www.gov.uk/government/organisations/ministry-of-justice)**THE NATIONAL ARCHIVES**

Tel 020 8876 3444

Web [www.nationalarchives.gov.uk](http://www.nationalarchives.gov.uk)**NATIONAL ASSEMBLY FOR WALES**

Tel 0300 200 6565

Web [www.assemblywales.org](http://www.assemblywales.org)**NATIONAL MONUMENTS SERVICE (ARCHAEOLOGY)**

Tel 00 353 01 888 2178

Web [www.archaeology.ie](http://www.archaeology.ie)**NATIONAL RECORDS OF SCOTLAND**

Tel 0131 334 0380

Web [www.nrscotland.gov.uk](http://www.nrscotland.gov.uk)**NATIONAL TRUST**

Tel 01793 817401

Web [www.nationaltrust.org.uk](http://www.nationaltrust.org.uk)**NATIONAL TRUST FOR SCOTLAND**

Tel 0131 4580200

Web [www.nts.org.uk/](http://www.nts.org.uk/)**NATURAL ENGLAND**

Tel 0300 060 3900

Web [www.naturalengland.org.uk](http://www.naturalengland.org.uk)**NATURAL ENVIRONMENT RESEARCH COUNCIL**

Tel 01793 411500

Web [www.nerc.ac.uk](http://www.nerc.ac.uk)**NATURAL RESOURCES WALES**

Tel 0300 065 3000

Web [www.naturalresourceswales.gov.uk](http://www.naturalresourceswales.gov.uk)**THE PORTABLE ANTIQUITIES SCHEME**

Tel 020 7323 8618

Web [www.finds.org.uk](http://www.finds.org.uk)**PROSPECT**

Tel 020 7902 6600

Web [www.prospect.org.uk](http://www.prospect.org.uk)**RESCUE – THE BRITISH ARCHAEOLOGICAL TRUST**Web [www.rescue-archaeology.org.uk](http://www.rescue-archaeology.org.uk)**ROYAL ARCHAEOLOGICAL INSTITUTE**Web [www.royalarchinst.org](http://www.royalarchinst.org)**ROYAL COMMISSION ON THE ANCIENT & HISTORICAL MONUMENTS OF WALES**

Tel 01970 621200

Web [www.rcahmw.gov.uk](http://www.rcahmw.gov.uk)**ROYAL INCORPORATION OF ARCHITECTS IN SCOTLAND**

Tel 0131 2297545

Web [www.rias.org.uk](http://www.rias.org.uk)**ROYAL INSTITUTE OF BRITISH ARCHITECTS**

Tel 020 7580 5533

Web [www.architecture.com](http://www.architecture.com)**ROYAL INSTITUTION OF CHARTERED SURVEYORS**

Tel 024 7686 8555

Web [www.rics.org/uk/](http://www.rics.org/uk/)**ROYAL TOWN PLANNING INSTITUTE**

Tel 020 7929 9494

Web [www.rtpi.org.uk](http://www.rtpi.org.uk)**SCOTTISH CHURCH HERITAGE RESEARCH LTD**

Tel 01334 844822

Web [www.scottishchurches.org.uk](http://www.scottishchurches.org.uk)**SCOTLAND'S CHURCHES TRUST**

Tel 0131 225 8644

Web [www.scotlandschurchestrust.org.uk](http://www.scotlandschurchestrust.org.uk)**SCOTTISH CIVIC TRUST**

Tel 0141 221 1466

Web [www.scottishcivictrust.org.uk](http://www.scottishcivictrust.org.uk)**SCOTTISH REDUNDANT CHURCHES TRUST**

Tel 0131 5635135

Web [www.srct.org.uk](http://www.srct.org.uk)**SHETLAND AMENITY TRUST**

Tel 01595 694688

Web [www.shetlandamenity.org](http://www.shetlandamenity.org)**SOCIETY FOR CHURCH ARCHAEOLOGY**Web [www.churcharchaeology.org](http://www.churcharchaeology.org)**SOCIETY FOR MUSEUM ARCHAEOLOGY**Web [www.socmusarch.org.uk](http://www.socmusarch.org.uk)**SOCIETY FOR POST-MEDIEVAL ARCHAEOLOGY**Web [www.spma.org.uk](http://www.spma.org.uk)**SOCIETY FOR THE PROTECTION OF ANCIENT BUILDINGS**

Tel 020 7377 1644

Web [www.spab.org.uk](http://www.spab.org.uk)**SOCIETY OF ANTIQUARIES OF LONDON**

Tel 020 7479 7080

Web [www.sal.org.uk](http://www.sal.org.uk)**SOCIETY OF ANTIQUARIES OF SCOTLAND**

Tel 0131 247 4133

Web [www.socantscot.org](http://www.socantscot.org)**SURREY HISTORY CENTRE**Web [www.surreycc.gov.uk](http://www.surreycc.gov.uk)**SUSSEX SCHOOL OF ARCHAEOLOGY**

Tel 01323 811785

Web [www.sussexarchaeology.org](http://www.sussexarchaeology.org)**TOWN & COUNTRY PLANNING ASSOCIATION**

Tel 020 7930 8903

Web [www.tcpa.org.uk](http://www.tcpa.org.uk)**TREASURE TROVE IN SCOTLAND**

Tel 0131 247 4082

Web <https://treasuretrovescotland.co.uk>

## THE ROLE OF LOCAL AUTHORITY ARCHAEOLOGISTS (LAA)



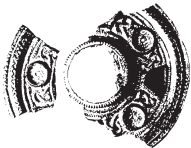
The job of the archaeological advisor is crucial where archaeology is undertaken in the spatial planning process, in response to development proposals. The advisor is equally important where archaeology takes place in accordance with some other condition or permission, for example under an archaeological excavation licence or a consent to investigate a designated, protected site.

Working within local government, archaeological services have **four** key functions in order to encourage the identification, recording, protection, management, interpretation and promotion of archaeological sites and monuments:

- 1 To develop and maintain comprehensive public information resources (Historic Environment Records/Sites and Monuments Records) for the understanding and enjoyment of the historic environment.
- 2 To ensure that all development and other land use takes into account the need properly to conserve the archaeological heritage.
- 3 To conserve the historic environment by improved management through, for example, agri-environment schemes which can protect archaeological sites from the damaging effects of ploughing.
- 4 To promote awareness, understanding and enjoyment of the historic environment through education and outreach programmes.

For more information and the up-to-date list of LAA archaeologists please see [www.algao.org.uk/localgov](http://www.algao.org.uk/localgov).

## THE ROLE OF THE PORTABLE ANTIQUITIES SCHEME (PAS)



Portable  
Antiquities  
Scheme

[www.finds.org.uk](http://www.finds.org.uk)

The British  
Museum

The Portable Antiquities Scheme is run by the British Museum and Amgueddfa Cymru – National Museum Wales to encourage the recording of archaeological objects found by members of the public in England and Wales. Finds recorded with the PAS help advance knowledge of the history and archaeology of England and Wales.

In order to do this the PAS

- promotes the maximum public interest and benefit from the recovery, recording and research of portable antiquities
- promotes best practice by finders/landowners and archaeologists/museums in the discovery, recording and conservation of finds made by the public
- in partnership with museums and others, raises awareness among the public, including young people, of the educational value of recording archaeological finds in their context and facilitating their research
- creates partnerships between finders and museums/archaeologists to increase participation in archaeology and advance our understanding of the past
- supports the Treasure Act and increases opportunities for museums to acquire archaeological finds for public benefits

For more information and the up-to-date list of PAS contacts please see <https://finds.org.uk/contacts>.