

ARCHAEOLOGY INDUSTRY ADDRESSES

ARCHAEOLOGY DATA SERVICE

Tel 01904 323954

Web www.archaeologydataservice.ac.uk

ARCHAEOLOGY SCOTLAND

Tel 0300 012 9878

Web www.archaeologyscotland.org.uk

ARCHIVES WALES

Tel 01970 632800

Web <https://archives.wales/>

ARTS COUNCIL ENGLAND

Tel 0161 934 4317

Web www.artscouncil.org.uk

ASSOCIATION FOR ENVIRONMENTAL ARCHAEOLOGY

Web www.envarch.net

ASSOCIATION FOR INDUSTRIAL ARCHAEOLOGY

Web www.industrial-archaeology.org

ASSOCIATION FOR STUDIES IN THE CONSERVATION OF HISTORIC BUILDINGS

Web www.aschb.org.uk

ASSOCIATION OF LOCAL GOVERNMENT

ARCHAEOLOGICAL OFFICERS

Tel 01223 728592

Web www.algao.org.uk

BRITISH ARCHAEOLOGICAL ASSOCIATION

Web www.thebaa.org

CADW

Tel 0300 025 6000

Web <https://cadw.gov.wales/>

CATHEDRAL COMMUNICATIONS

Tel 01747 871717

Web www.buildingconservation.com

THE CHURCHES CONSERVATION TRUST

Tel 0845 303 2760

Web www.visitchurches.org.uk

CHURCH MONUMENTS SOCIETY

Web www.churchmonumentsociety.org

CONSTRUCTION SKILLS CERTIFICATION SCHEME

Tel 0344 994 4777

Web www.cscs.uk.com

CIVIL ENGINEERING CONTRACTORS ASSOCIATION

Tel 020 7340 0450

Web www.ceca.co.uk

COUNCIL FOR BRITISH ARCHAEOLOGY

Tel 01904 671417

Web www.archaeologyuk.org

DEFENCE INFRASTRUCTURE ORGANISATION,

MINISTRY OF DEFENCE

Tel 020 7218 9000

Web www.gov.uk/government/organisations/ministry-of-defence

DEPARTMENT FOR CULTURE, MEDIA AND SPORT

Tel 020 7211 6000

Web www.culture.gov.uk

ENVIRONMENT AGENCY

Tel 03708 506506

Web www.gov.uk/government/organisations/environment-agency

EUROPEAN ASSOCIATION OF ARCHAEOLOGISTS

Tel 00 420 7337016979

Web www.e-a-a.org

FEDERATION OF ARCHAEOLOGICAL MANAGERS AND EMPLOYERS

Tel 0116 243 7581

Web www.famearchaeology.co.uk

THE GARDENS TRUST

Tel 020 7608 2409

Web <http://thegardenstrust.org/>

HEALTH AND SAFETY EXECUTIVE

Tel 0300 003 1747

Web www.hse.gov.uk

THE HERITAGE ALLIANCE

Tel 020 72330 500

Web www.theheritagealliance.org.uk

HERITAGE FUND

Tel 020 7591 6000

Web www.hlf.org.uk

HIGHWAYS ENGLAND

Tel 0300 123 5000

Web www.gov.uk/government/organisations/highways-england

HISTORIC ENGLAND (LONDON)

Tel 020 7973 3700

Web www.historicengland.org.uk

HISTORIC ENGLAND (FORT CUMBERLAND)

Tel 023 9285 6704

Web www.historicengland.org.uk

HISTORIC ENGLAND (SWINDON)

Tel 01793 445050

Web www.historicengland.org.uk

HISTORIC ENVIRONMENT SCOTLAND

Tel 0131 668 8600

Web www.historicenvironment.scot

HISTORIC GARDENS FOUNDATION

Tel 020 7633 9165

Web www.historicgardens.org

HISTORIC HOUSES ASSOCIATION

Tel 020 7259 5688

Web www.historichouses.org/

INSTITUTE OF ARCHAEOLOGISTS OF IRELAND

Tel 00 353 1 6629517

Web www.iai.ie

INSTITUTE OF CONSERVATION

Tel 020 3142 6799

Web www.icon.org.uk

INSTITUTE OF ENVIRONMENTAL MANAGEMENT & ASSESSMENT

Tel 01522 540069

Web www.iema.net

INSTITUTE OF HISTORIC BUILDING CONSERVATION

Tel 01747 873133

Web www.ihbc.org.uk

INSTITUTION OF CIVIL ENGINEERS

Tel 020 7222 7722

Web www.ice.org.uk

INTERNATIONAL COUNCIL ON MONUMENTS & SITES UK

Tel 020 7566 0031

Web www.icomos-uk.org

LOCAL GOVERNMENT ASSOCIATION

Tel 020 7664 3000

Web www.local.gov.uk

LONDON PARKS & GARDENS TRUST

Tel 020 7839 3969

Web www.londongardenstrust.org

MANX NATIONAL HERITAGE

Tel 01624 648000

Web www.manxnationalheritage.im

MARITIME & COASTGUARD AGENCY (RECEIVER OF WRECK)

Tel 020 3817 2575

Web www.gov.uk/government/groups/receiver-of-wreck

MINISTRY OF JUSTICE

Tel 020 3334 3555

Web www.gov.uk/government/organisations/ministry-of-justice

THE NATIONAL ARCHIVES

Tel 020 8876 3444

Web www.nationalarchives.gov.uk

NATIONAL ASSEMBLY FOR WALES

Tel 0300 200 6565

Web www.assemblywales.org

NATIONAL MONUMENTS SERVICE

Tel 00 353 01 888 2178

Web www.archaeology.ie

NATIONAL RECORDS OF SCOTLAND

Tel 0131 334 0380

Web www.nrscotland.gov.uk

NATIONAL TRUST

Tel 01793 817401

Web www.nationaltrust.org.uk

NATIONAL TRUST FOR SCOTLAND

Tel 0131 4580200

Web www.nts.org.uk/

NATURAL ENGLAND

Tel 0300 060 3900

Web www.naturalengland.org.uk

NATURAL ENVIRONMENT RESEARCH COUNCIL

Tel 01793 411500

Web www.nerc.ac.uk

NATURAL RESOURCES WALES

Tel 0300 065 3000

Web www.naturalresourceswales.gov.uk

THE PORTABLE ANTIQUITIES SCHEME

Tel 020 7323 8618

Web www.finds.org.uk

PROSPECT

Tel 020 7902 6600

Web www.prospect.org.uk

RESCUE – THE BRITISH ARCHAEOLOGICAL TRUST

Web www.rescue-archaeology.org.uk

ROYAL ARCHAEOLOGICAL INSTITUTE

Web www.royalarchinst.org

ROYAL COMMISSION ON THE ANCIENT & HISTORICAL MONUMENTS OF WALES

Tel 01970 621200

Web www.rcahmw.gov.uk

ROYAL INCORPORATION OF ARCHITECTS IN SCOTLAND

Tel 0131 229 7545

Web www.rias.org.uk

ROYAL INSTITUTE OF BRITISH ARCHITECTS

Tel 020 7580 5533

Web www.architecture.com

ROYAL INSTITUTION OF CHARTERED SURVEYORS

Tel 024 7686 8555

Web <http://www.rics.org/uk/>

ROYAL TOWN PLANNING INSTITUTE

Tel 020 7929 9494

Web www.rtpi.org.uk

SCOTTISH CHURCH HERITAGE RESEARCH LTD

Tel 01334 844822

Web www.scottishchurches.org.uk

SCOTLAND'S CHURCHES TRUST

Tel 0131 225 8644

Web www.scotlandschurchestrust.org.uk

SCOTTISH CIVIC TRUST

Tel 0141 221 1466

Web www.scottishcivictrust.org.uk

SCOTTISH REDUNDANT CHURCHES TRUST

Tel 0131 563 5135 / 07780 682961

Web www.srct.org.uk

SHETLAND AMENITY TRUST

Tel 01595 694688

Web www.shetlandamenity.org

SOCIETY FOR CHURCH ARCHAEOLOGY

Web www.archaeologyuk.org/socchurcharchaeol

SOCIETY FOR MUSEUM ARCHAEOLOGY

Web www.socmusarch.org.uk

SOCIETY FOR POST-MEDIEVAL ARCHAEOLOGY

Web www.spma.org.uk

SOCIETY FOR THE PROTECTION OF ANCIENT BUILDINGS

Tel 020 7377 1644

Web www.spab.org.uk

SOCIETY OF ANTIQUARIES OF LONDON

Tel 0207 479 7080

Web www.sal.org.uk

SOCIETY OF ANTIQUARIES OF SCOTLAND

Tel 0131 247 4133

Web www.socantscot.org

SURREY HISTORY CENTRE

Web www.surreycc.gov.uk

SUSSEX SCHOOL OF ARCHAEOLOGY

Tel 01323 811785

Web www.sussexarchaeology.org

TOWN & COUNTRY PLANNING ASSOCIATION

Tel 020 7930 8903

Web www.tcpa.org.uk

TREASURE TROVE IN SCOTLAND

Tel 0131 247 4082

Web <https://treasuretrovescotland.co.uk>

THE ROLE OF LOCAL AUTHORITY ARCHAEOLOGISTS (LAA)



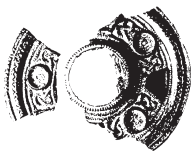
The job of the archaeological advisor is crucial where archaeology is undertaken in the spatial planning process, in response to development proposals. The advisor is equally important where archaeology takes place in accordance with some other condition or permission, for example under an archaeological excavation licence or a consent to investigate a designated, protected site.

Working within local government, archaeological services have **four** key functions in order to encourage the identification, recording, protection, management, interpretation and promotion of archaeological sites and monuments:

- 1 To develop and maintain comprehensive public information resources (Historic Environment Records/Sites and Monuments Records) for the understanding and enjoyment of the historic environment.
- 2 To ensure that all development and other land use takes into account the need properly to conserve the archaeological heritage.
- 3 To conserve the historic environment by improved management through, for example, agri-environment schemes which can protect archaeological sites from the damaging effects of ploughing.
- 4 To promote awareness, understanding and enjoyment of the historic environment through education and outreach programmes.

For more information and the up-to-date list of LAA archaeologists please see www.algao.org.uk/localgov.

THE ROLE OF THE PORTABLE ANTIQUITIES SCHEME (PAS)



Portable
Antiquities
Scheme

www.finds.org.uk

The British
Museum

The Portable Antiquities Scheme is run by the British Museum and Amgueddfa Cymru – National Museum Wales to encourage the recording of archaeological objects found by members of the public in England and Wales. Finds recorded with the PAS help advance knowledge of the history and archaeology of England and Wales.

In order to do this the PAS

- promotes the maximum public interest and benefit from the recovery, recording and research of portable antiquities
- promotes best practice by finders/landowners and archaeologists/museums in the discovery, recording and conservation of finds made by the public
- in partnership with museums and others, raises awareness among the public, including young people, of the educational value of recording archaeological finds in their context and facilitating their research
- creates partnerships between finders and museums/archaeologists to increase participation in archaeology and advance our understanding of the past
- supports the Treasure Act and increases opportunities for museums to acquire archaeological finds for public benefits

For more information and the up-to-date list of PAS contacts please see <https://finds.org.uk/contacts>.