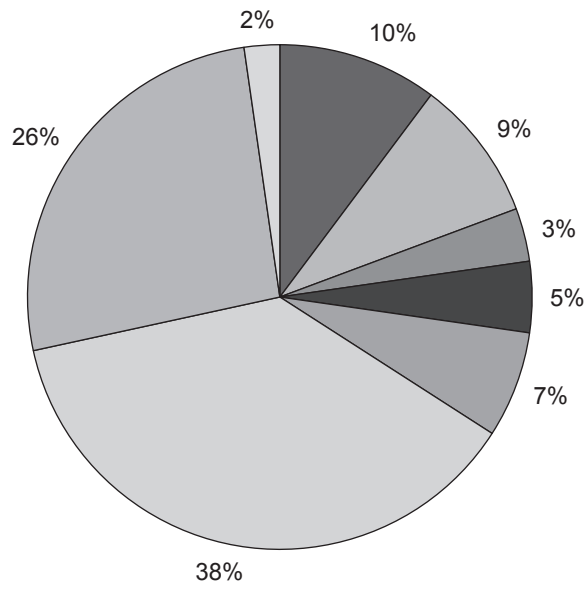
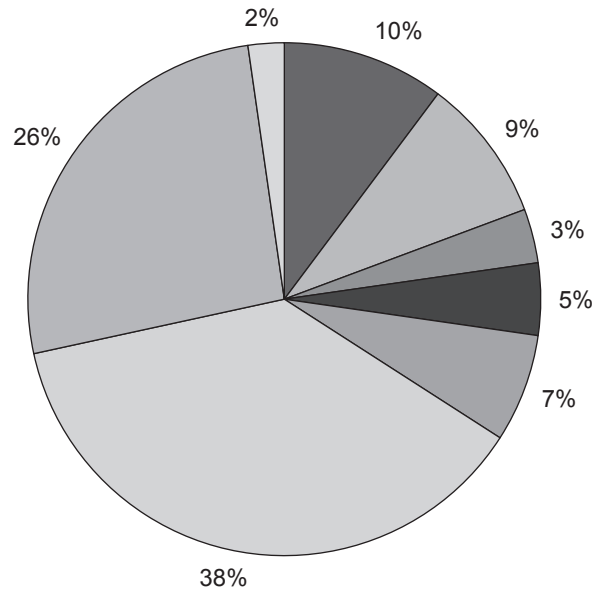


24a



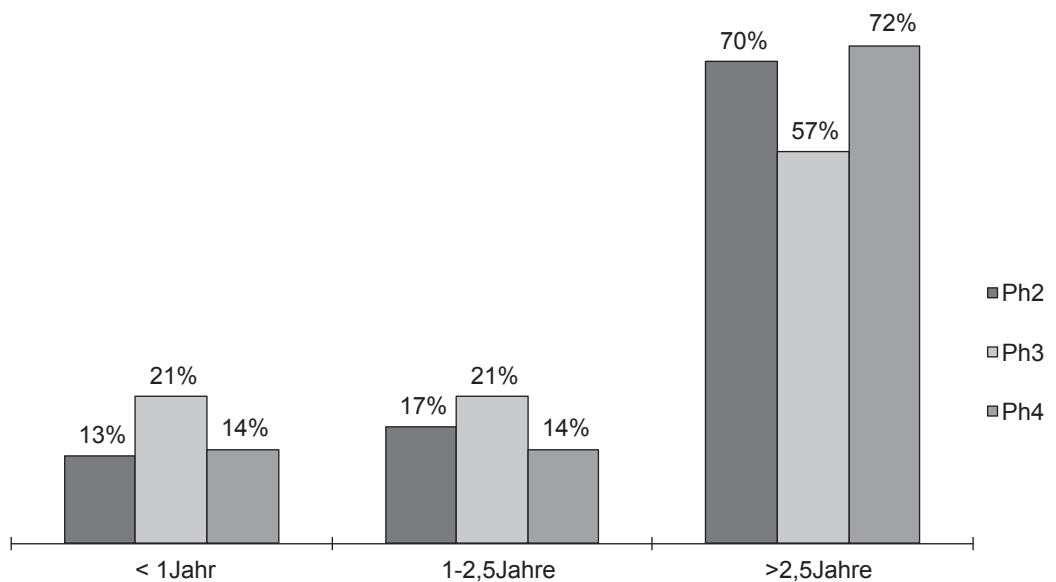
- 1-4M
- 5-10M
- 11-20M
- 21-24M
- 24-30M
- 2,5-3,5J
- 3,5-5J
- >5J

24b



- 1-4M
- 5-10M
- 11-20M
- 21-24M
- 24-30M
- 2,5-3,5J
- 3,5-5J
- >5J

25



- Ph2
- Ph3
- Ph4