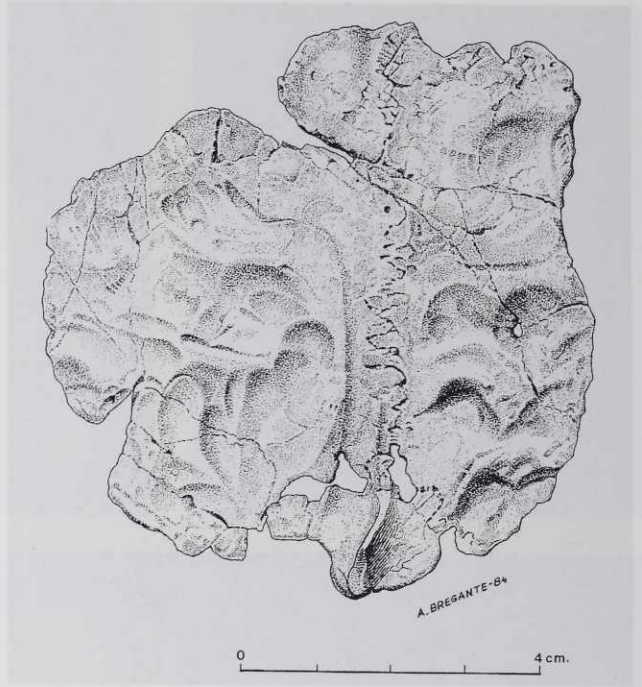


Industries lithiques en silex de la région d'Orce (Granada, Espagne). - 1-3 Barranco León 5 (1 nucleus, 2-3 éclats). - 4-6 Fuentenueva 3a (5 nucleus, 6 éclats). - Éch. = 1:1.



1



2



a

b

3

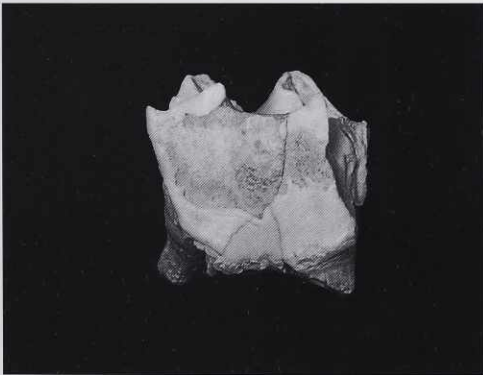
Venta Micena, région d'Orce (Granada, Espagne). – 1 Fragment de crâne (Vue externe, grandeur nature). – 2 Dessin du côté interne du fragment de crâne. On observe un plus petit denticulé de la suture sagittale dans la région obélique, ainsi que le trajet du sillon sagittal et de la crête sagittale gauche. – 3 Vue frontale des fragments d'humerus. a: VM-3691, b: VM-1960. – 1. 2 Éch. = 1:1; 3 Éch. ca. 2:3.



1



2



3



4

1 Rhinoceros. Cutmarked atlas. SA/AD. – 2 Detail of cutmarks on 1.  
3-4 Rhinoceros. M1 sup. with enamel hypoplasia. – 3 Buccal view. – 4 Mesial view.

1 Rhinoceros. Cutmarked humerus, sin. AD. - 2 Detail of cutmarks on 1.



1



2



1



2



3



4

1 Rhinoceros. Cutmarked tarsal T3. SA II. – 2 Detail of cutmarks on 1.  
3 Rhinoceros. Cutmarked Mc 2 sin. SA I. – 4 Detail of cutmarks on 3.



1



2



3

Rhinoceros. Pathological right mandible of adult. - 1 From above. - 2 From below. - 3 From lateral side.

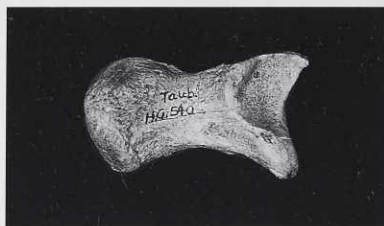


1



2

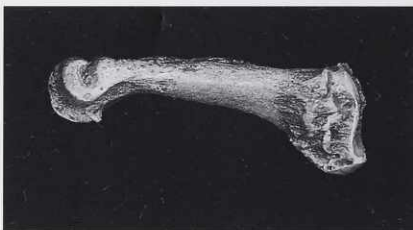
1 Bear. Cutmarked fragment of right mandible. AD. – 2 Detail of cutmarks on 1.



1



2



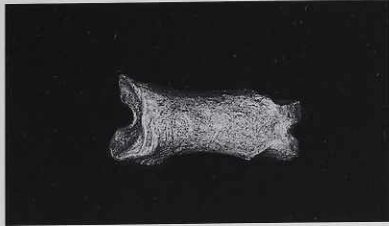
3



4

1 Bear. Cutmarked carpal, Os accessorium, sin. SA/AD. – 2 Detail of cutmarks on 1.  
 3 Bear. Cutmarked Mt 3 sin. AD. – 4 Detail of cutmarks on 3.





1

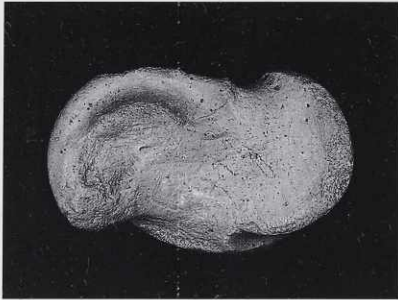


2



3

1 Bear. Cutmarked Ph. I. SA/AD. – 2 Detail of cutmarks on 1.  
3 Left: Taubach Brown bear, Mt 2-5 dx. – Right: recent European Brown bear, Mt 1-5 sin.



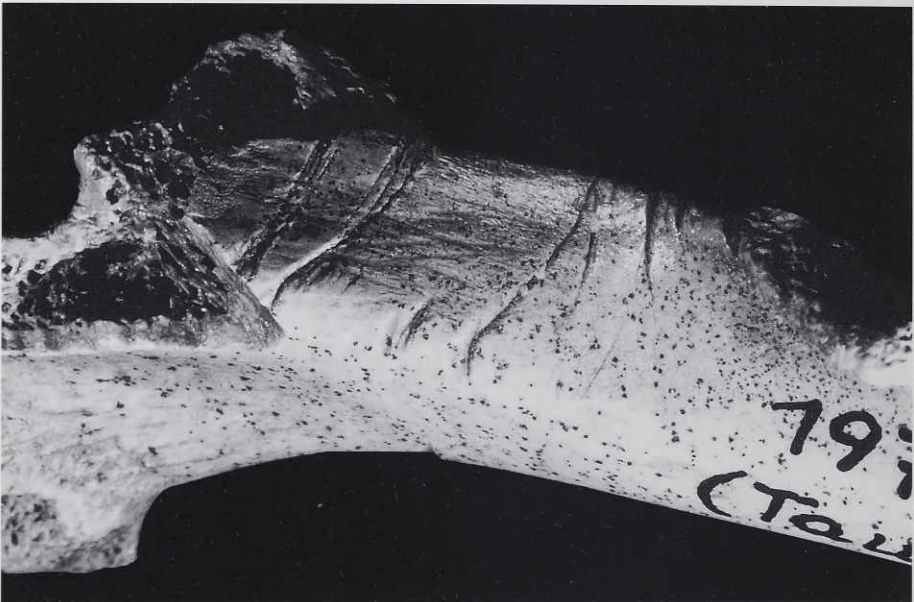
1



2



3



4

1 Large bovid (Bison). Cutmarked talus, sin. SA/AD. – 2 Detail of cutmarks on 1.  
 3 Beaver. Cutmarked femur, sin. SA II. – 4 Detail of cutmarks on 3.