



Abb. 1. Der Rössener Hügel in seiner ursprünglichen Gestalt vor der Anlage der Siedlung Neurössen, von Nordwesten gesehen. (Aus „Mannus“ Bd. XI/XII, S. 311).

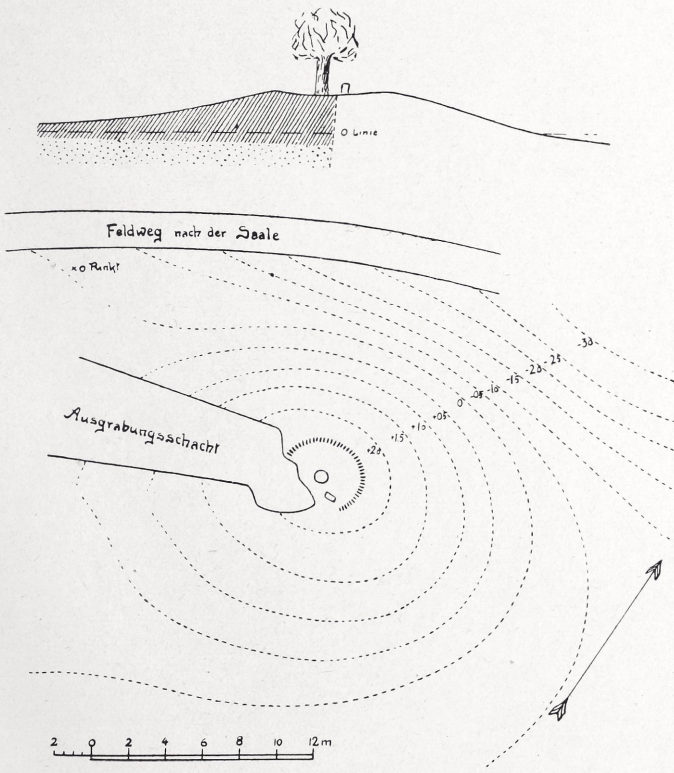


Abb. 2 und 3. Durchschnitt und Plan des Hügel.

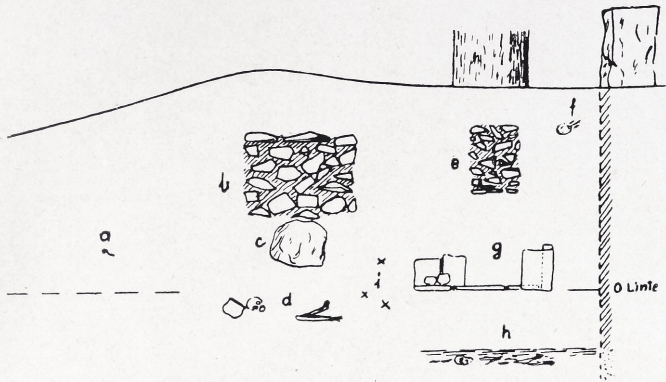


Abb. 1.  
 Durchschnitt.

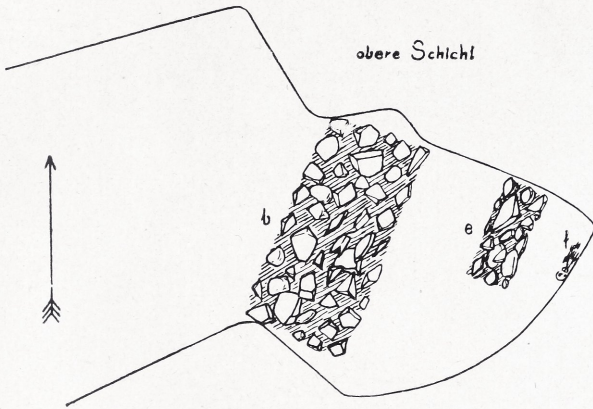


Abb. 2.  
 Obere  
 Fundschicht.

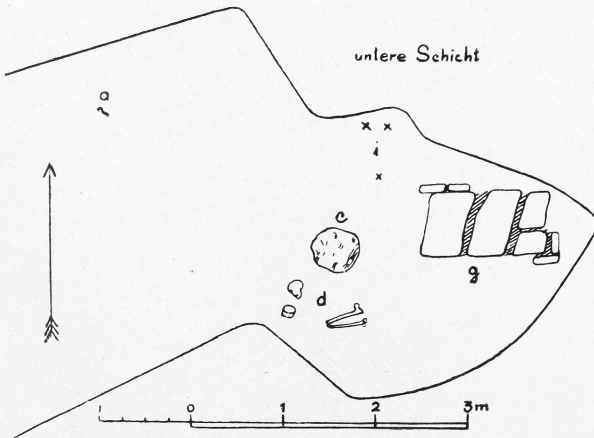


Abb. 3.  
 Untere  
 Fundschicht.

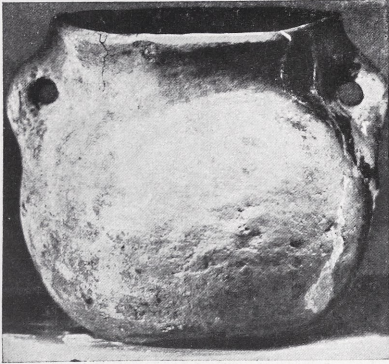


Abb. 1.  $\frac{1}{3}$ .

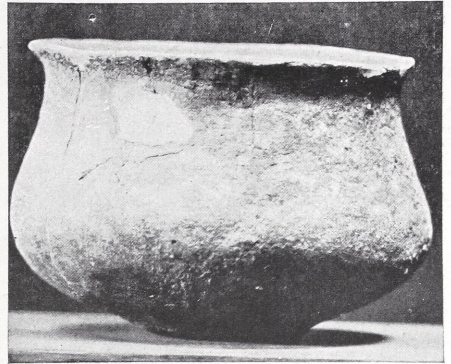


Abb. 3.  $\frac{1}{3}$ .

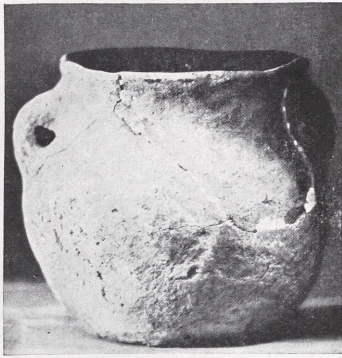


Abb. 2.  $\frac{1}{3}$ .

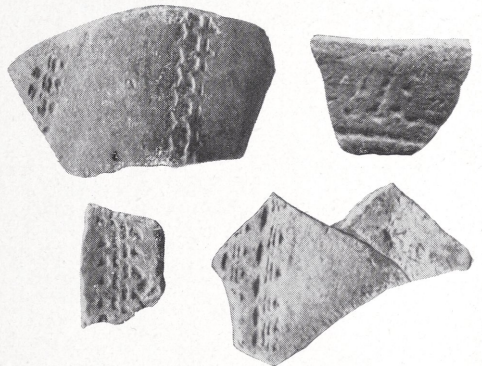


Abb. 4.  $\frac{2}{3}$ .

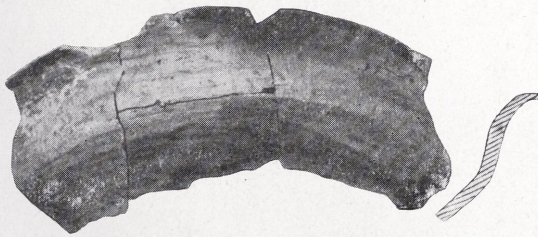


Abb. 5.  $\frac{1}{3}$ .

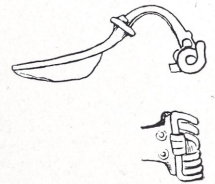


Abb. 6.  $\frac{1}{2}$ .

Abb. 1—3 aus „Mannus“, Bd. XI/XII, S. 313.



Abb. 1.  $\frac{1}{4}$ .  
Bestattung 1.



Abb. 2.  $\frac{1}{4}$ .

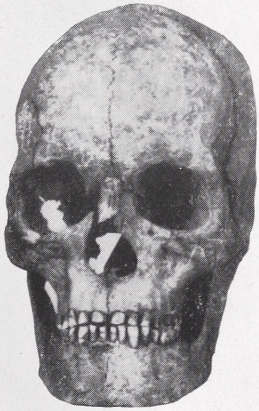


Abb. 3.  $\frac{1}{4}$ .

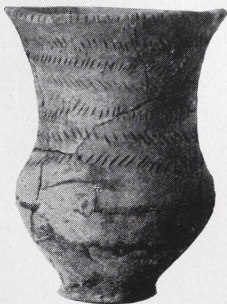


Abb. 4.  $\frac{1}{4}$ .  
Bestattung 8.



Abb. 5.  $\frac{1}{4}$ .  
Peißen, Saalkreis.

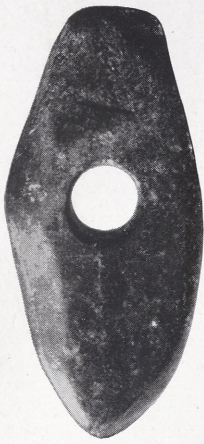
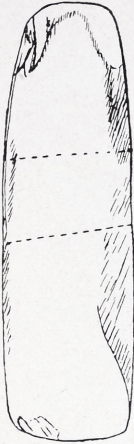


Abb. 1.  $\frac{1}{2}$ .



$\frac{1}{2}$ . Abb. 2.  $\frac{1}{1}$ .



Abb. 3.  $\frac{1}{2}$ .



Abb. 4.  $\frac{1}{2}$ .



Abb. 5.  $\frac{1}{2}$ .



Abb. 6.  $\frac{1}{2}$ .

Peißen, Saalkreis.



Aufstellung des Doppelgrabes von Peißen (Saalkreis) in der  
Landesanstalt für Vorgeschichte.  
Das obere Grab ruht auf einer Glasplatte.

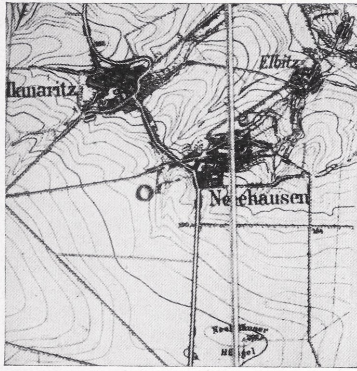


Abb. 1. 1 : 50 000.

○ Fundstelle.



Abb. 2.  $\frac{1}{2}$ .



Abb. 3.  $\frac{1}{2}$ .

Neehausen, Mansfelder Seekreis.

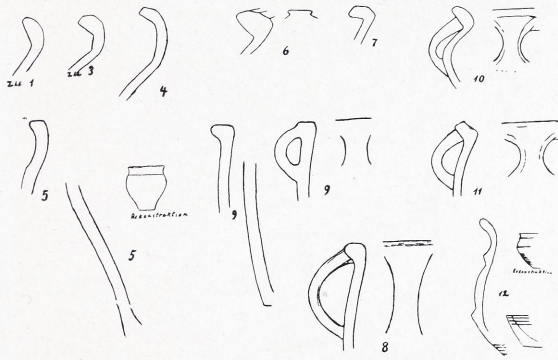
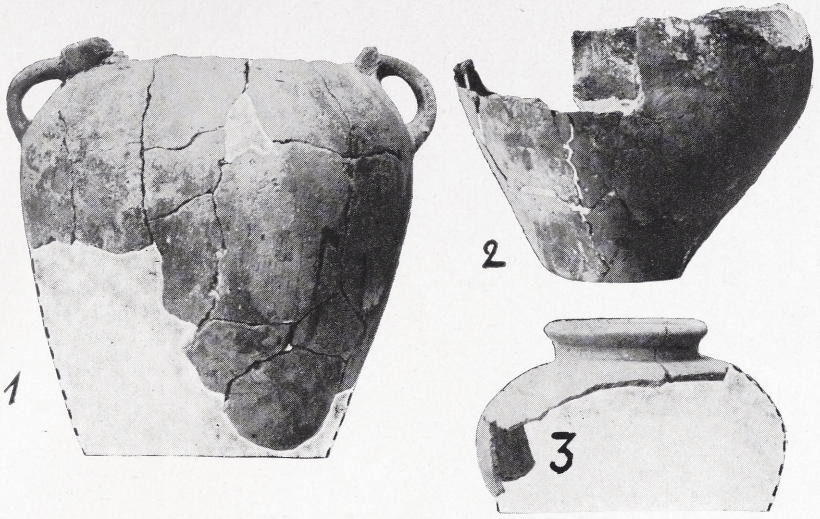


Abb. 1.  $\frac{1}{4}$ .

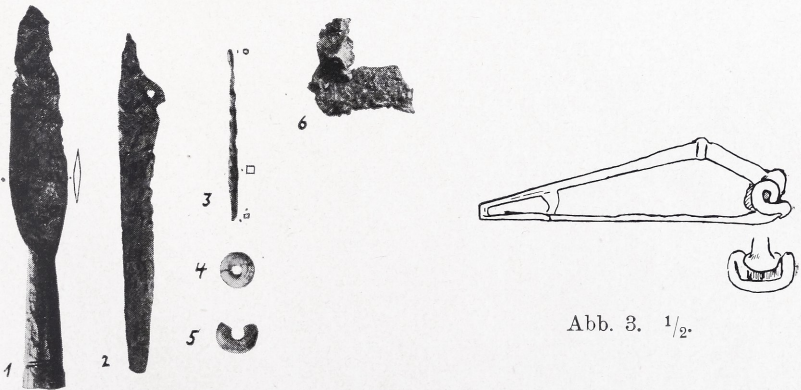


Abb. 3.  $\frac{1}{2}$ .

Abb. 2.  $\frac{1}{2}$ .

Gernstedt, Kr. Naumburg.



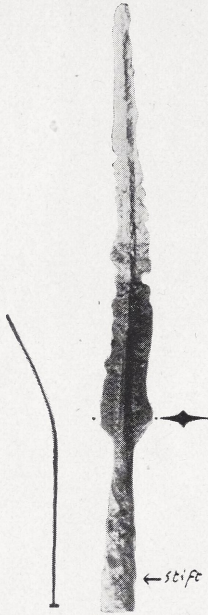


Abb. 1.  $\frac{1}{4}$ .

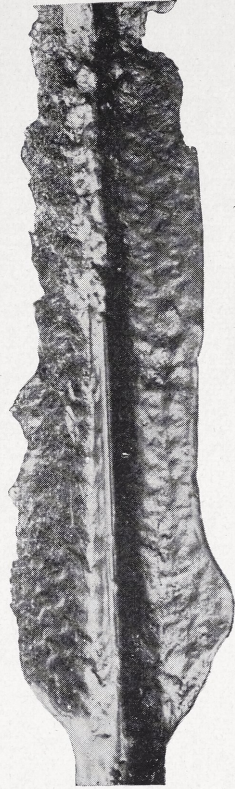


Abb. 2.  $\frac{1}{4}$ .

Burgscheidungen, Kr. Querfurt.

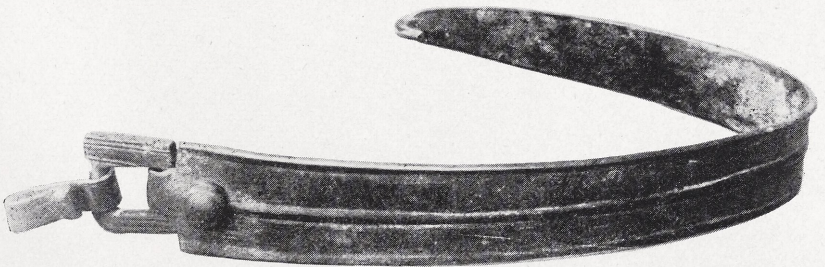


Abb. 3.  $\frac{1}{2}$ .  
Wittenberg.



Abb. 1. Bernburg.  $\frac{1}{4}$ .  
Nach Mannus, Ergänzungsband III, 1923.

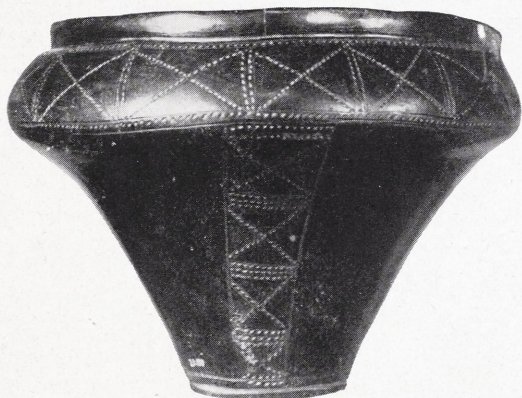
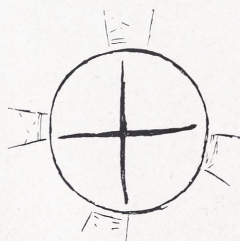


Abb. 2. Althaldensleben, Kr. Neuhaldensleben.  $\frac{1}{4}$ .



Abb. 3. Thüringen.  $\frac{1}{4}$ .



Abb. 1.  $\frac{1}{4}$ .

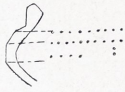


Abb. 2.  $\frac{1}{4}$ .

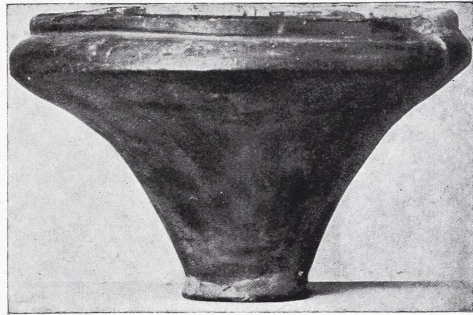
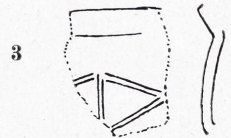
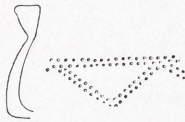
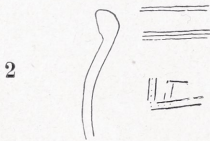


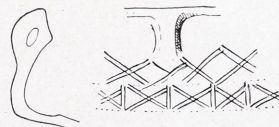
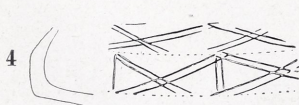
Abb. 1—3 nach Mannus,  
Ergänzungsband III.



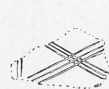
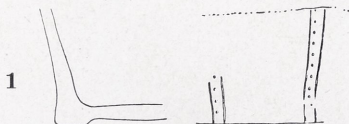
Nr. 8 zu Abb. 3.  
 $\frac{1}{4}$ .



5



6



7

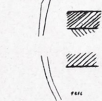


Abb. 4.  $\frac{1}{4}$ .

Abb. 3. knapp  $\frac{1}{4}$ .

Schkopau, Kr. Merseburg.

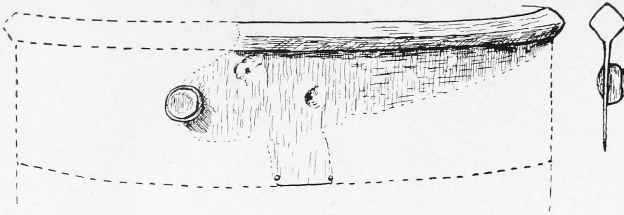


Abb. 1.  $\frac{1}{4}$ .

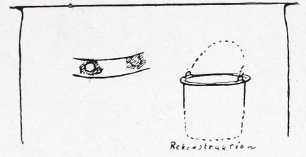
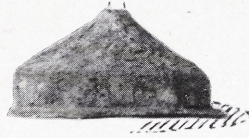


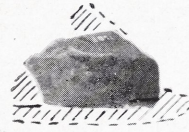
Abb. 2.  $\frac{1}{4}$ .



Abb. 3.  $\frac{1}{4}$ .



1



2

Abb. 4.  $\frac{1}{4}$ .



c



b



a

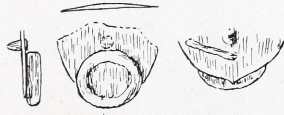


Abb. 6.  $\frac{1}{4}$ .

Abb. 5.  $\frac{1}{4}$ .

Schkopau, Kr. Merseburg.

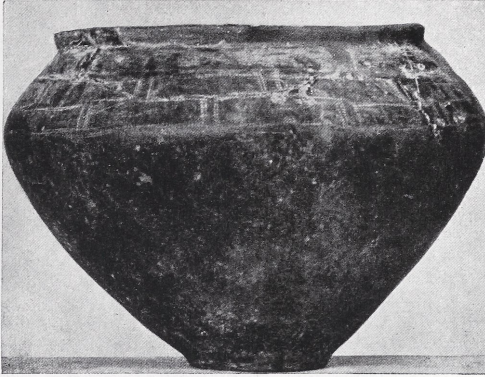


Abb. 1.  $\frac{1}{4}$ .  
Nach Mannus, Ergänzungsband III.

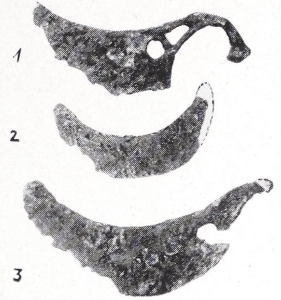


Abb. 4.  $\frac{1}{4}$ .

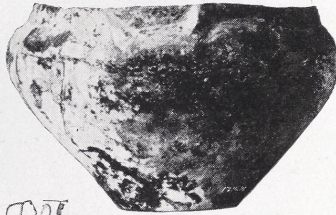


Abb. 2.  $\frac{1}{4}$ .



Abb. 3.  $\frac{1}{4}$ .

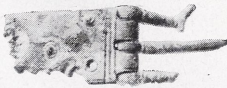


Abb. 9.  $\frac{1}{2}$ .

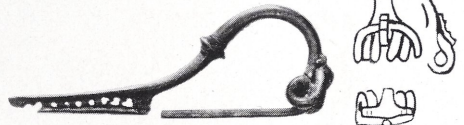


Abb. 5.  $\frac{1}{2}$ .



Abb. 10.  $\frac{1}{2}$ .

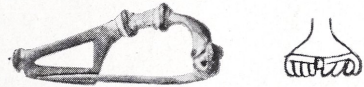


Abb. 6.  $\frac{1}{2}$ .



Abb. 7.  $\frac{1}{2}$ .



Abb. 8.  $\frac{1}{2}$ .

Weißenfels, Beudefeld.



Abb. 1. Zscherben, Saalkr.  $\frac{1}{4}$ .



Abb. 2.  $\frac{1}{4}$ .  
Zschiezewitz, Kr. Bitterfeld.

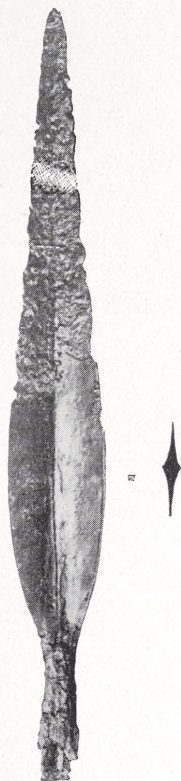


Abb. 3.  $\frac{1}{2}$ .  
Zu Gefäß Abb. 2.



Abb. 4.  $\frac{1}{4}$ .  
Bergwitz, Kr. Wittenberg.

Abb. 2 u. 4 nach Mannus,  
Ergänzungsband III.



Abb. 1.  $\frac{1}{2}$ .



Schkeuditz, Kr. Merseburg.



Abb. 2.  $\frac{1}{4}$ .



Abb. 3.  $\frac{1}{2}$ .  
Wehlitz, Kr. Merseburg.

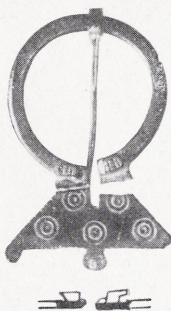
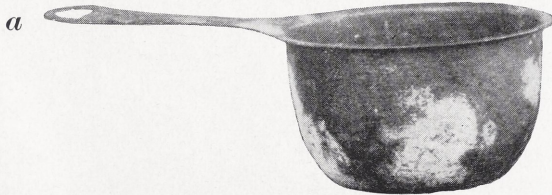


Abb. 4.  $\frac{1}{2}$ .  
Rössen, Kr. Merseburg.



Abb. 5.  $\frac{1}{2}$ .  
Rössen, Kr. Merseburg.



*b*



Abb. 6. *a*  $\frac{1}{4}$ , *b*  $\frac{1}{2}$ . Neuhaldensleben.



1 1/2.



2 1/2.



3 1/2.

Schäplitz, Kr. Stendal. 1/4.



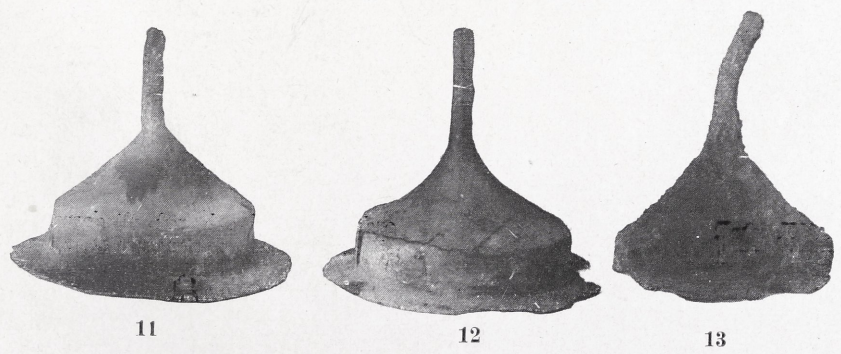
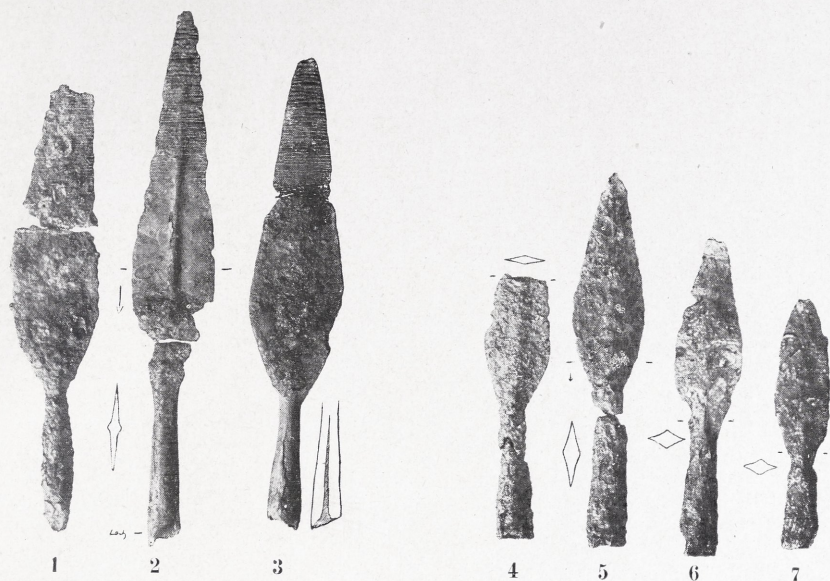




Abb. 1 a, b u. c.  $\frac{1}{4}$ .

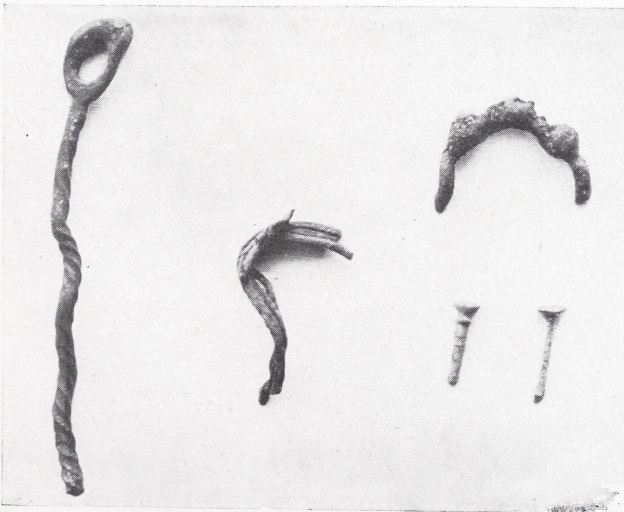


Abb. 2 a, b, c, d u. e.  $\frac{1}{1}$ .

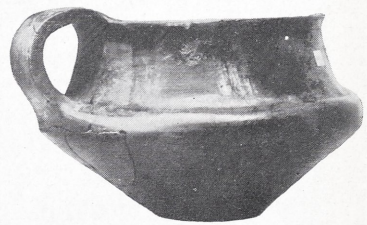
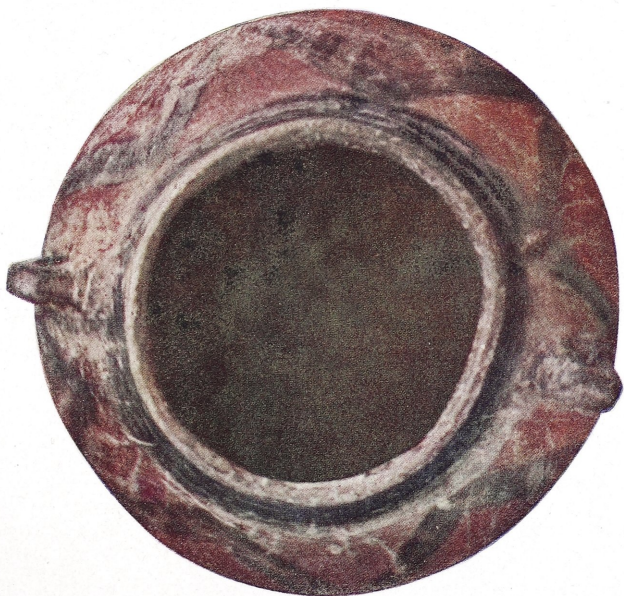


Abb. 3.  $\frac{1}{4}$ .

Warnstedt, Kr. Quedlinburg.



Warnstedt, Kr. Quedlinburg.  $\frac{3}{4}$ .