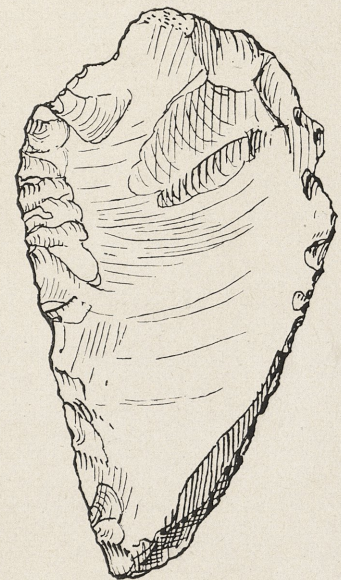
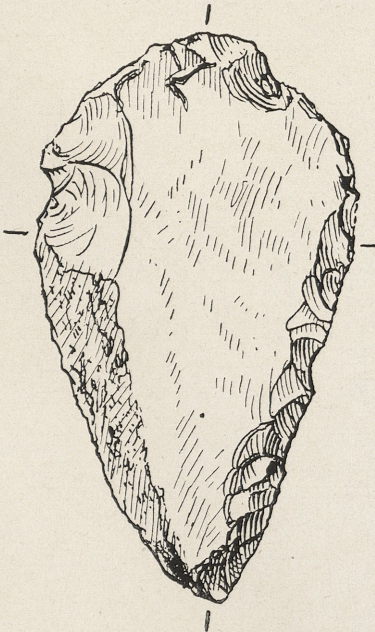




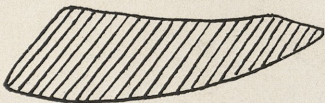
Oberseite.



Unterseite.



Unterseite.



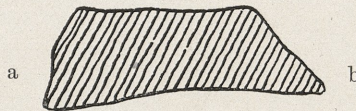
Oberseite.



a



b



a

b



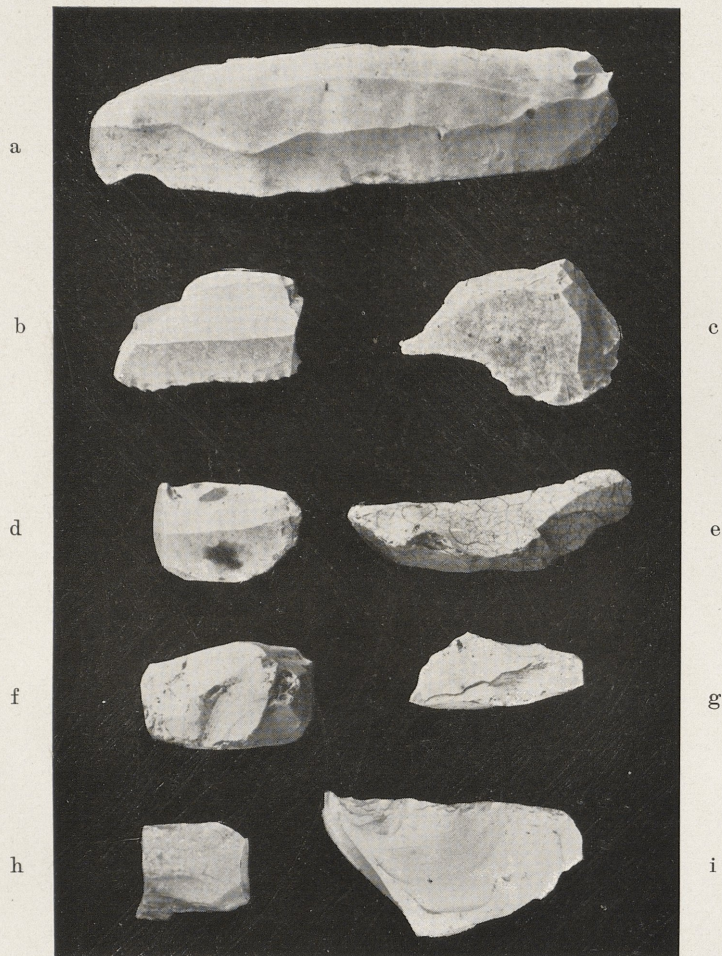
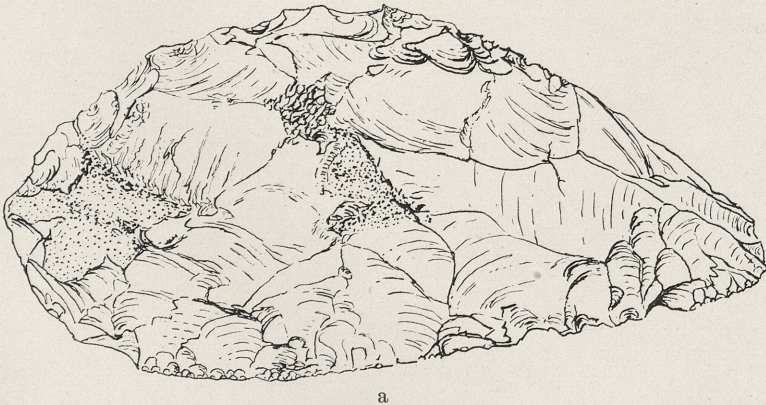
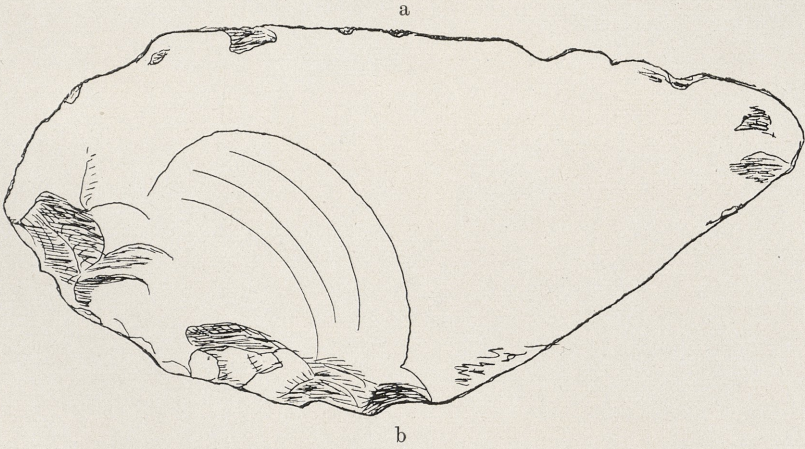
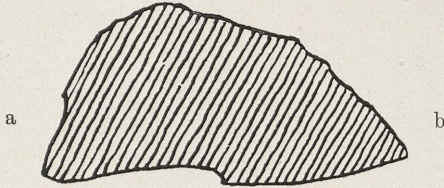
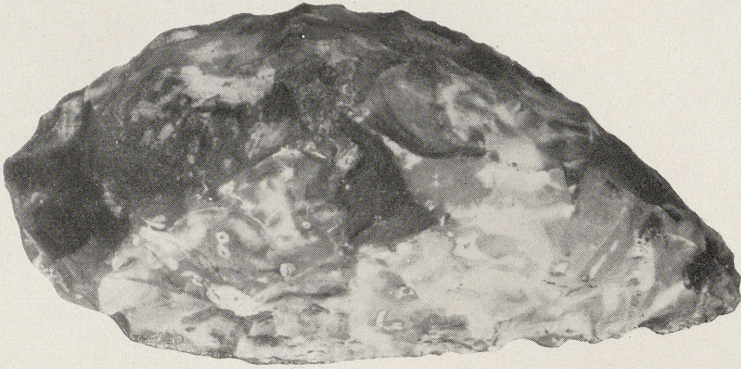


Abb. 1.  $\frac{1}{4}$ .



Abb. 2. Rückseite von Abb. 1a.

K. Schirwitz, Ein Lößfund aus dem Harzvorlande.



A. Hemprich: Ein Faustkeilschaberfund aus dem Harzvorlande.  $\frac{1}{4}$ .



1



2



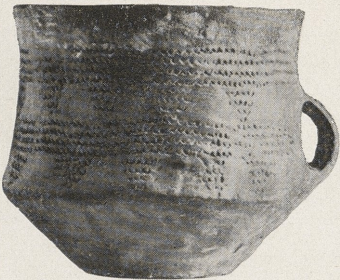
3



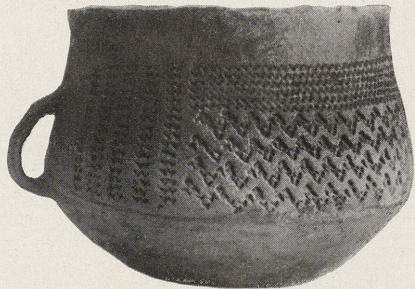
4



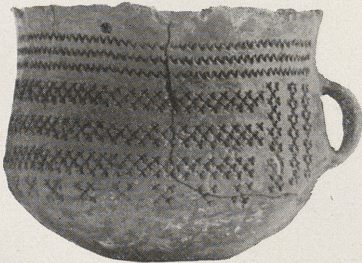
5



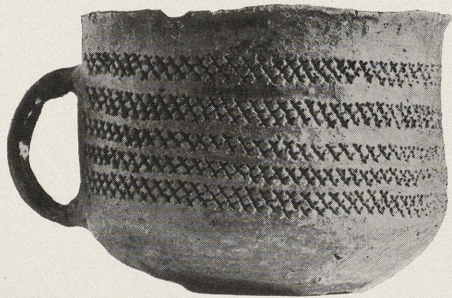
6



7



8



9

Abb. 1—9. Burg, Kr. Jerichow I.

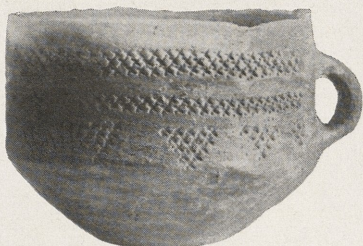
Hermis, Neolithische Gräberfelder bei Burg und Molkenberg.



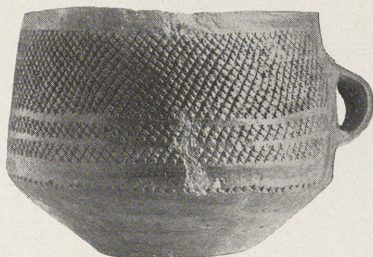
1



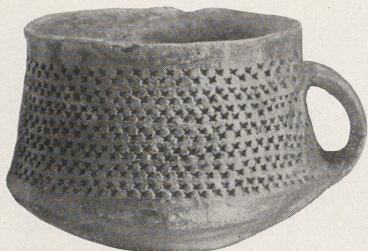
2



3



4



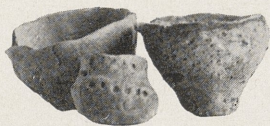
5



6



7



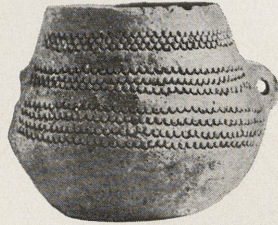
7 a-c

Abb. 1—7. Burg, Kr. Jerichow I.

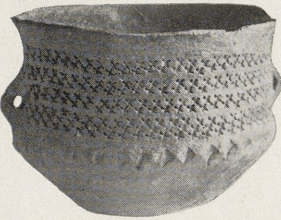
Herms, Neolithische Gräberfelder bei Burg und Molkenberg.



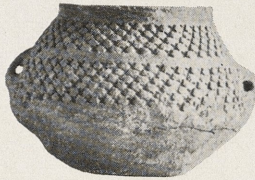
1



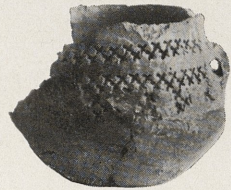
2



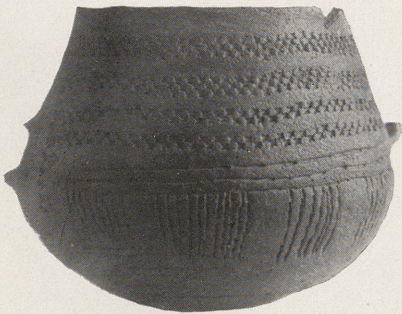
3



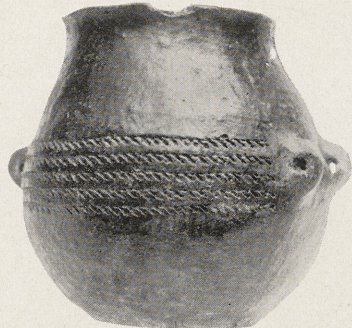
4



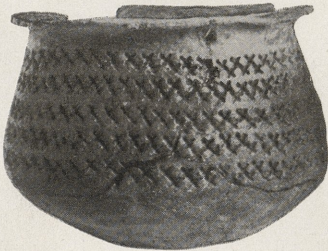
5



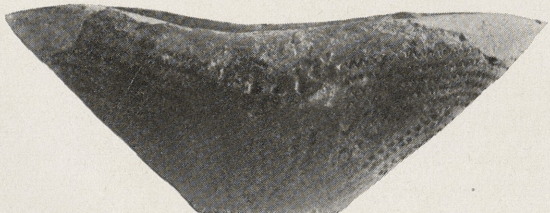
6



7



8



9

Abb. 1—9. Burg, Kr. Jerichow I.

Hermes, Neolithische Gräberfelder bei Burg und Molkenberg.

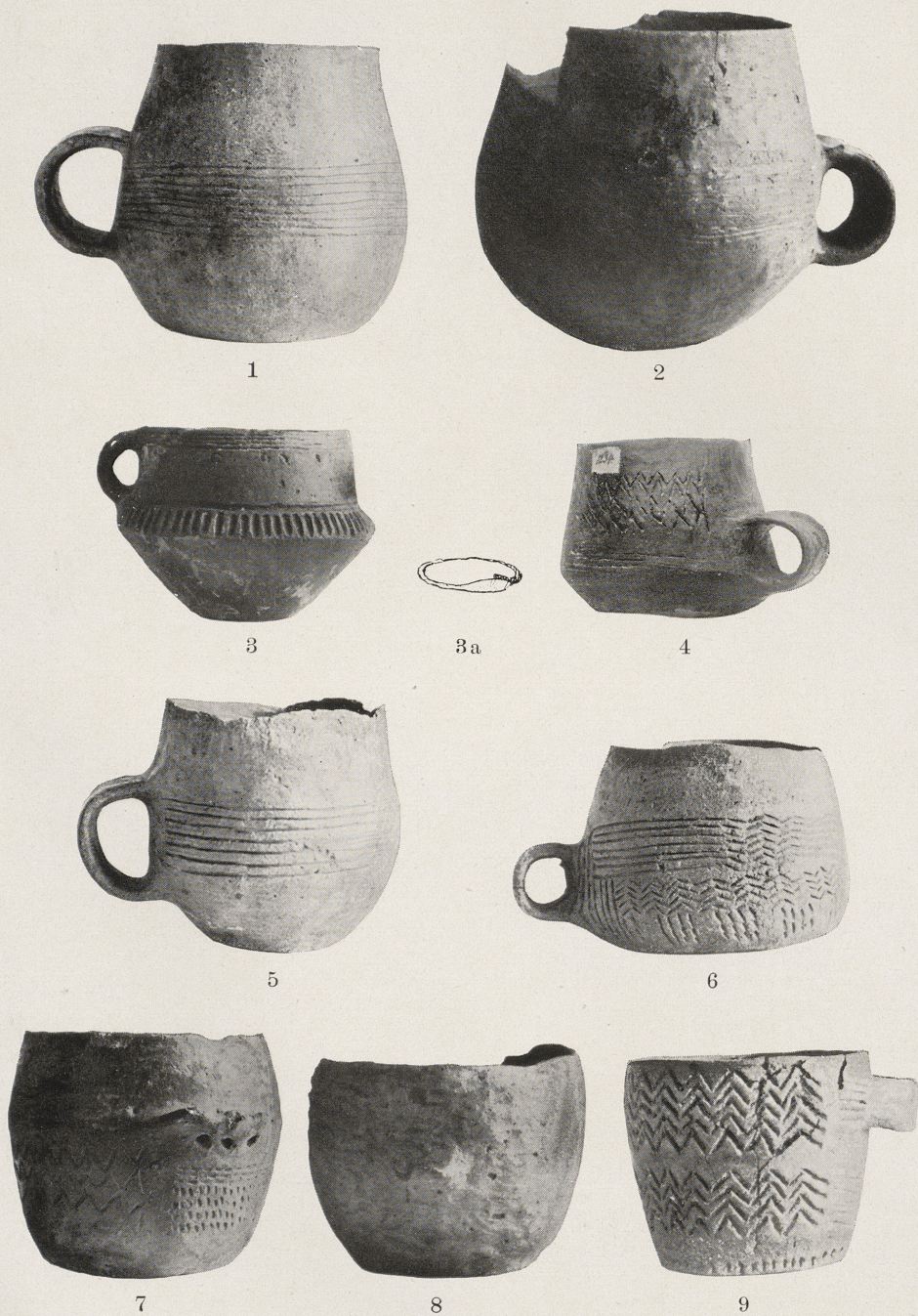
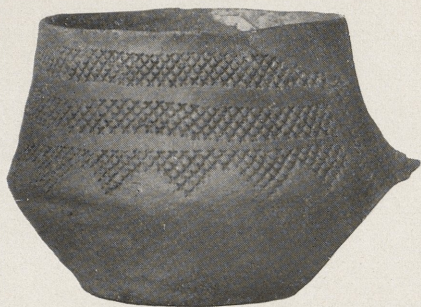


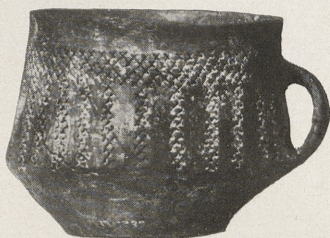
Abb. 1—9. Burg, Kr. Jerichow I.

Herms, Neolithische Gräberfelder bei Burg und Molkenberg.

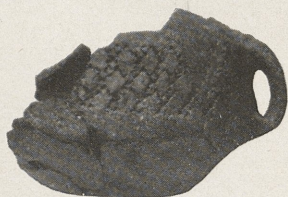




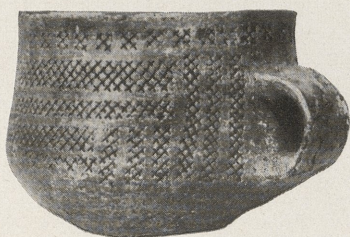
1



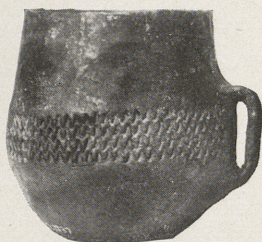
2



3



4



5



6



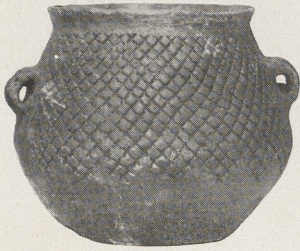
7



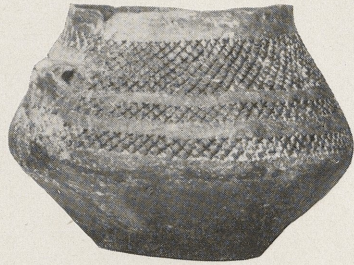
8

Abb. 1—8 Molkenberg, Kr. Jerichow II.

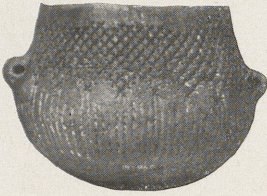
Herms, Neolithische Gräberfelder bei Burg und Molkenberg.



1



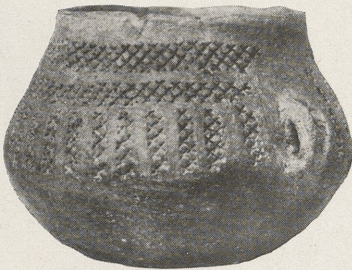
2



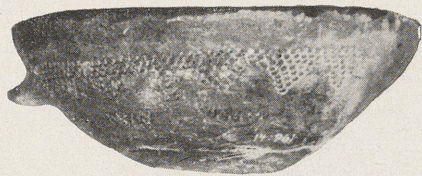
3



4



5



6



7

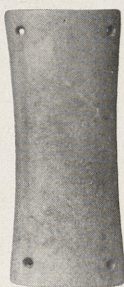
Abb. 1—6. Molkenberg, Kr. Jerichow II. Abb. 7. Suderode, Kr. Halberstadt.  
Herms, Neolithische Gräberfelder bei Burg und Molkenberg.



Abb. 1. Rössen, Kr. Merseburg. 1:2,3.



a



b



Abb. 2. Rössen, Kr. Merseburg.  $\frac{1}{3}$ .

Abb. 3. Freist, Mansf. Seekreis.  $\frac{1}{3}$ .

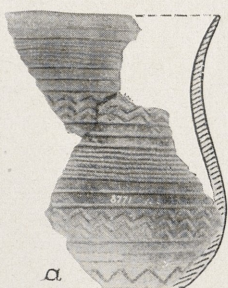


Abb. 4. Kleincorbetha, Kr. Merseb.  $\frac{1}{3}$ .



Abb. 5. Niederschmon, Kr. Querf.  $\frac{1}{3}$ .



Abb. 6. Bornitz, Kr. Zeitz.  $\frac{1}{3}$ .



Abb. 7. Löbersdorf, Kr. Bitterfeld.  $\frac{1}{3}$ .



Abb. 1. Collenbey, Kr. Merseburg.  $\frac{1}{3}$ .



Abb. 2. Weißenfels.  $\frac{1}{3}$ .



Abb. 3. Weißenfels.  $\frac{1}{3}$ .

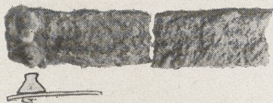


Abb. 4.  $\frac{1}{3}$ .  
Wallrode, Kr. Worbis.

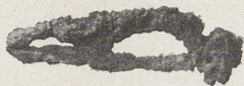


Abb. 5.  $\frac{1}{3}$ .  
Heldrungen, Kr. Eckartsberga.

E. u.  
Br.



E.



Gr. 4.



Gr. 11. E.



Gr. 10. E.



Gr. 1. Br.  $\frac{1}{4}$ .



Gr. 10.  $\frac{1}{5}$ .

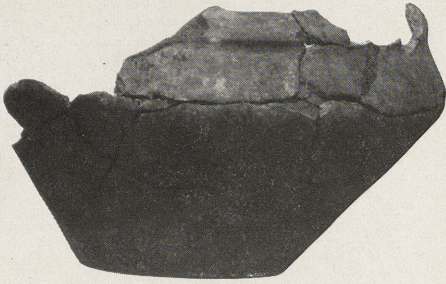


Gr. 13. E.

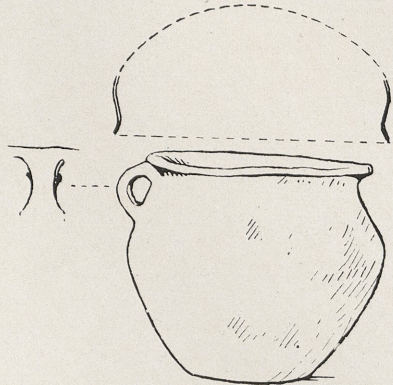


Gr. 13.  $\frac{1}{4}$ .

Sämtliche Beigaben  $\frac{1}{2}$ . Abkürzungen: Gr. = Grab, Br. = Bronze, E. = Eisen.



Gr. 14.  $\frac{1}{5}$



Gr. 15.  $\frac{1}{4}$



Gr. 16.  $\frac{1}{4}$



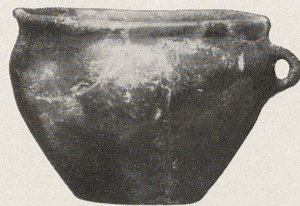
Gr. 17.  $\frac{1}{4}$



Gr. 17.



Gr. 19.  $\frac{1}{5}$



Gr. 20.  $\frac{1}{4}$



Gr. 19. E.

Sämtliche Beigaben  $\frac{1}{2}$ . Abkürzungen: Gr. = Grab, Br. = Bronze, E. = Eisen.



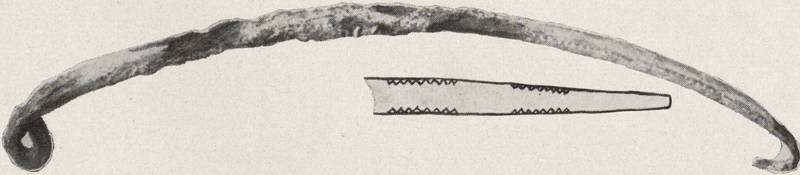
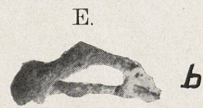
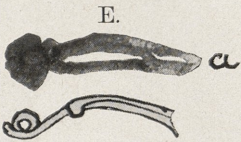
Gr. 21.  $\frac{1}{4}$ .



Gr. 24.  $\frac{1}{5}$ .



$\frac{1}{5}$



E.

Gr. 25.

Sämtliche Beigaben  $\frac{1}{2}$ . Abkürzungen: Gr. = Grab, Br. = Bronze, E. = Eisen.

K. H. Marschallack, Das Urnenfeld von Blönsdorf, Kr. Wittenberg.



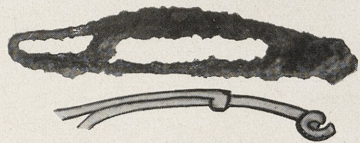
Gr. 26.  $\frac{1}{6}$ .



Gr. 27.  $\frac{1}{5}$ .



Gr. 28.  $\frac{1}{4}$ .



Gr. 27. E.



Gr. 31. Br.



Gr. 31.  $\frac{1}{5}$ .



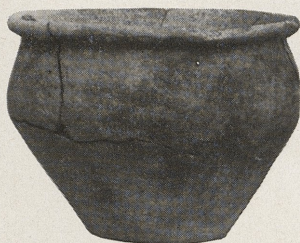
Gr. 31. E.

Sämtliche Beigaben  $\frac{1}{2}$ . Abkürzungen: Gr. = Grab, Br. = Bronze, E. = Eisen.





Gr. 32.  $\frac{1}{5}$ .



Gr. 33.  $\frac{1}{4}$ .



Gr. 32. E.



Gr. 32. E.



Gr. 34.  $\frac{1}{5}$ .



E.



Gr. 34.

E.



E.

Sämtliche Beigaben  $\frac{1}{2}$ . Abkürzungen: Gr. = Grab, Br. = Bronze, E. = Eisen.



Gr. 35.  $\frac{1}{5}$ .



Gr. 39.  $\uparrow \frac{1}{5}$ .  $\downarrow$  Schulter von oben.



Gr. 35. E.



Gr. 36.  $\frac{1}{4}$ .

Sämtliche Beigaben  $\frac{1}{2}$ . Abkürzungen: Gr. = Grab, Br. = Bronze, E. = Eisen.



Gr. 40.  $\frac{1}{4}$ .



Gr. 44.  $\frac{1}{4}$ .



Gr. 41. Br.



Gr. 41.  $\frac{1}{4}$ .



Gr. 41. E.



Gr. 49.  $\frac{1}{5}$ .

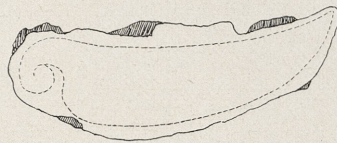
Sämtliche Beigaben  $\frac{1}{2}$ . Abkürzungen: Gr. = Grab, Br. = Bronze, E. = Eisen.



Gr. 45.  $\frac{1}{2}$ . E.



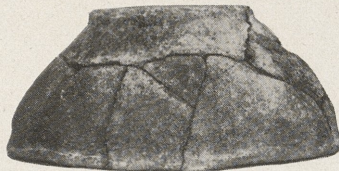
Gr. 45.  $\frac{1}{5}$ .



Schematische Zeichnung des Messers mit Scheide.  
Gr. 45.  $\frac{1}{3}$ .



Gr. 47.  $\frac{1}{4}$ .



Gr. 48.  $\frac{1}{4}$ .



Gr. 50.  $\frac{1}{4}$ .



Gr. 51.  $\frac{1}{4}$ .

Sämtliche Beigaben  $\frac{1}{2}$ . Abkürzungen: Gr. = Grab, Br. = Bronze, E. = Eisen.

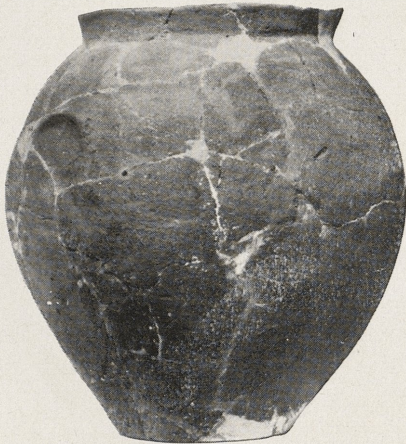
K. H. Marschalleck, Das Urnenfeld von Blönsdorf, Kr. Wittenberg.



Gr. 52.  $\frac{1}{4}$ .



Gr. 52. E.



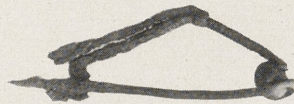
Gr. 53 (a).  $\frac{1}{6}$ .



Gr. 53 (b).  $\frac{1}{4}$ .



Gr. 53. Br.



Nr. 2a. E.

Sämtliche Beigaben  $\frac{1}{2}$ . Abkürzungen: Gr. = Grab, Br. = Bronze, E. = Eisen.

K. H. Marschalleck, Das Urnenfeld von Blönsdorf, Kr. Wittenberg



Abb. 1. Grab 3.  $\frac{1}{4}$ .

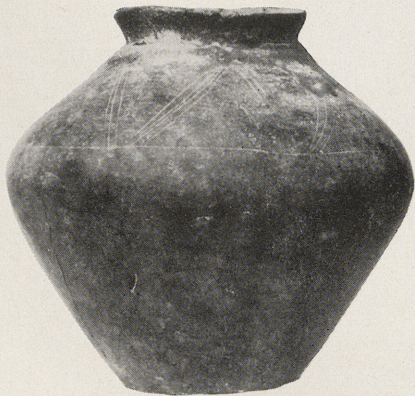


Abb. 2. Grab 4.  $\frac{1}{4}$ .



Abb. 3. Grab 5.  $\frac{1}{4}$ .



Abb. 4. Grab 6.  $\frac{1}{4}$ .



Abb. 1.



Abb. 2.

Wergahna, Kr. Wittenberg.

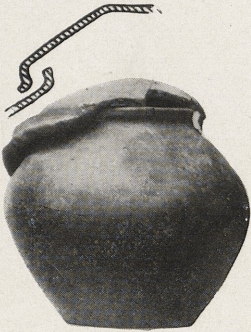


Abb. 3.

Zahna, Kr. Wittenberg.

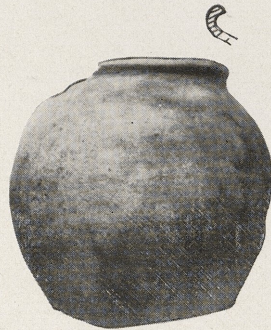


Abb. 4.

Tießen, Kr. Wittenberg.

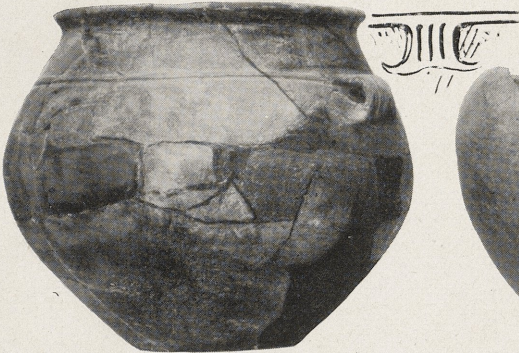


Abb. 5.

Tießen, Kr. Wittenberg.



Abb. 6.

Tongefäße.  $\frac{1}{6}$ .

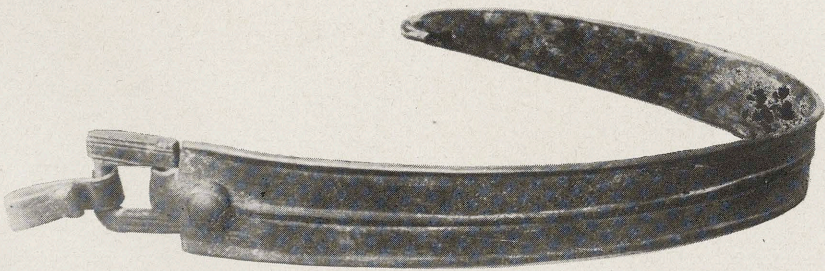
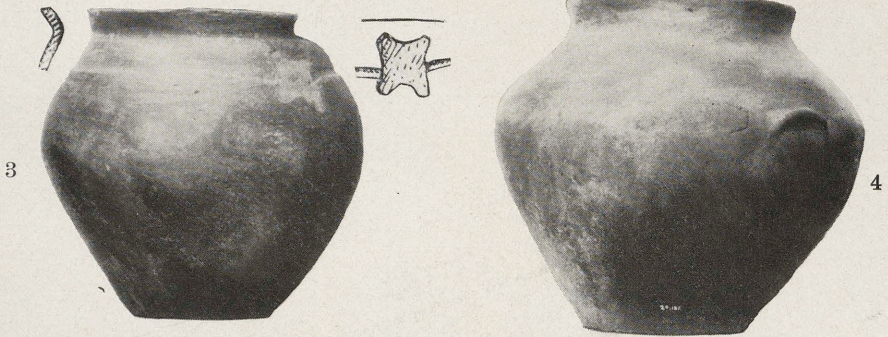
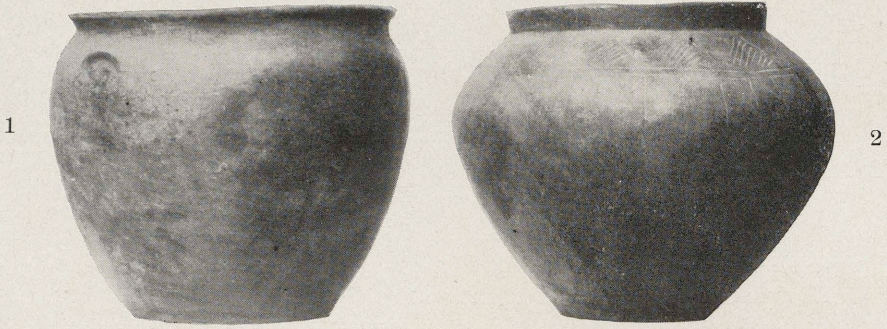


Abb. 5 a. Br.  $\frac{1}{2}$ .

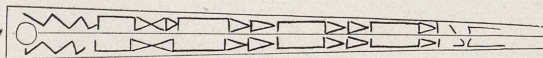


Abb. 5 b. Zeichnung von a.  $\frac{1}{4}$ .

Wittenberg, Schrebergärten.

Tongefäße  $\frac{1}{6}$ .

Schulz, Kleinere Funde der jüngeren Latènezeit.





Abb. 1.

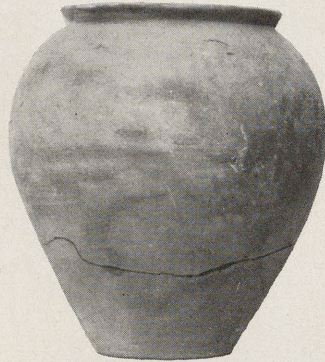


Abb. 2.

Wittenberg, Elstervorstadt.



Abb. 3.

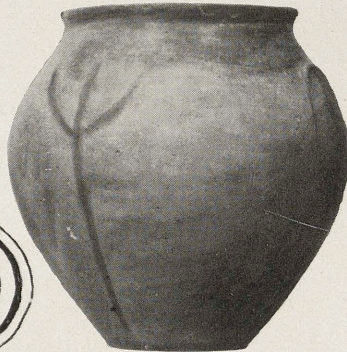


Abb. 4.

Wittenberg, linkes Elbufer.

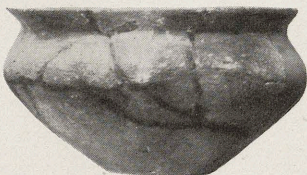


Abb. 5.

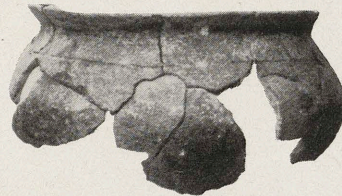


Abb. 6.



Abb. 7.  $\frac{1}{2}$  Br.

Walbeck, Kr. Gardelegen.

Tongefäße  $\frac{1}{6}$ .

Schulz, Kleinere Funde der jüngeren Latènezeit.



Abb. 1. Bernburg.



Abb. 2. Teuditz, Kr. Merseburg.

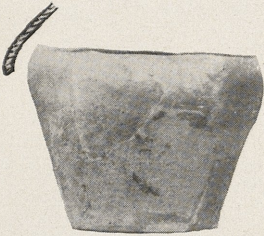


Abb. 3.

Allstedt, Thüringen.

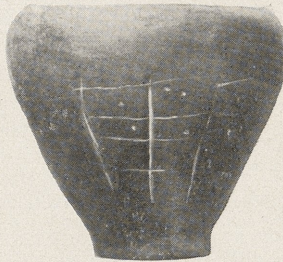


Abb. 4.

Porbitz, Kr. Merseb.

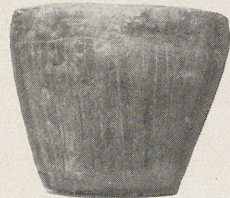


Abb. 5.

Schafstädt, Kr. Merseb.

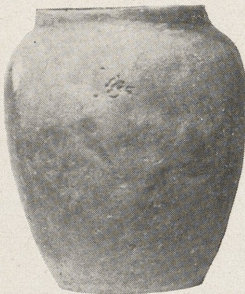


Abb. 6.

Möritzsch, Kr. Merseburg.

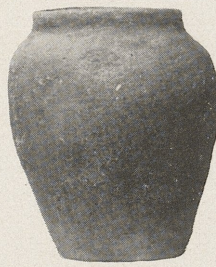


Abb. 7.

Kl. Corbetha, Kr. Merseburg.

Tongefäß Abb. 1  $\frac{1}{4}$ , die andern  $\frac{1}{6}$ .