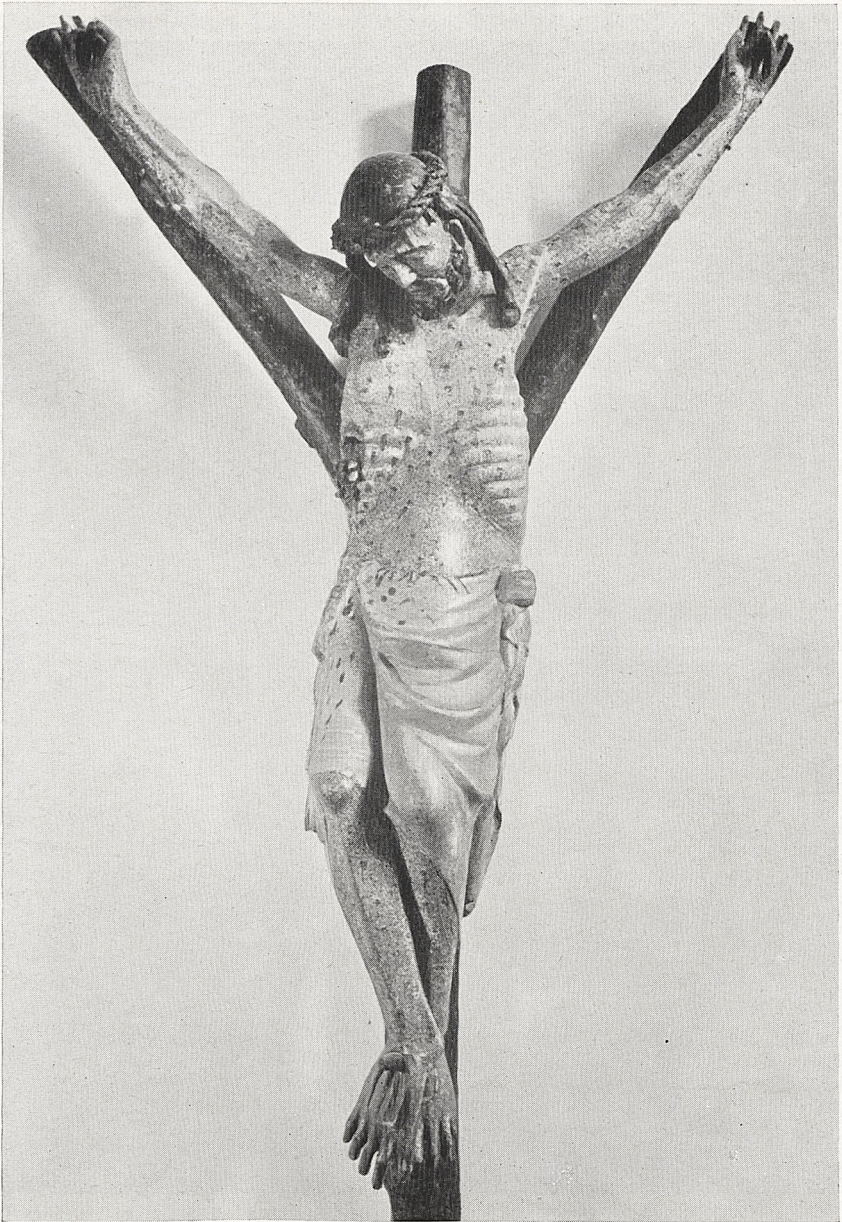


Abb. 1 Kanonbild. Hildesheim, um 1150/60. Luzern, Slg. Kofler-Truniger



*Abb. 2* Thronende Mutter Gottes. Mittelrhein, um 1250.  
Mönchen-Gladbach, Slg. H. Schwartz



*Abb. 3 Asterkreuz. Köln, um 1350. Privatbesitz*

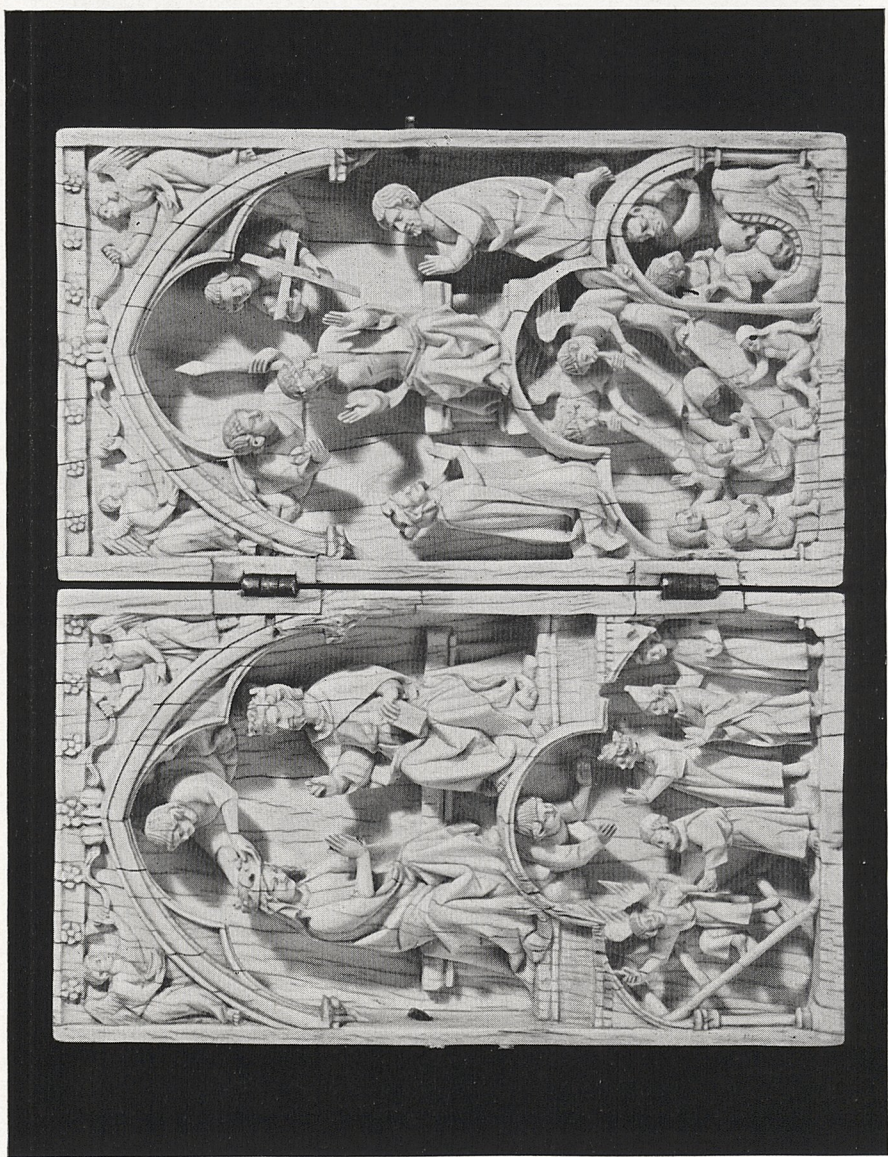


Abb. 4 Diptychon. Paris, um 1330. Luzern, Sig. Kofler-Truninger