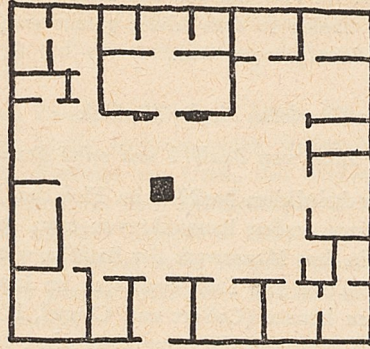
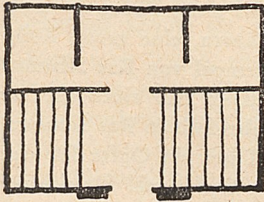


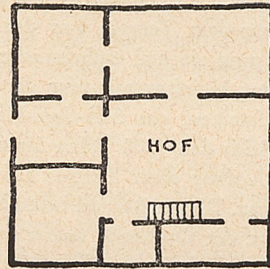
BABYLONISCHER HOFHAUSTEMPEL



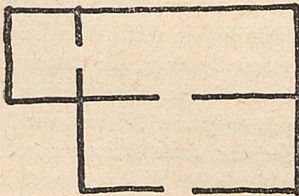
HOFHAUSTEMPEL IN DURA



CELLA DES ATARGATISTEMPELS



WOHNHAUS IN DURA



CELLA MIT NEBENRAUM



Abb. 1 Tempel- und Wohnhausgrundrisse

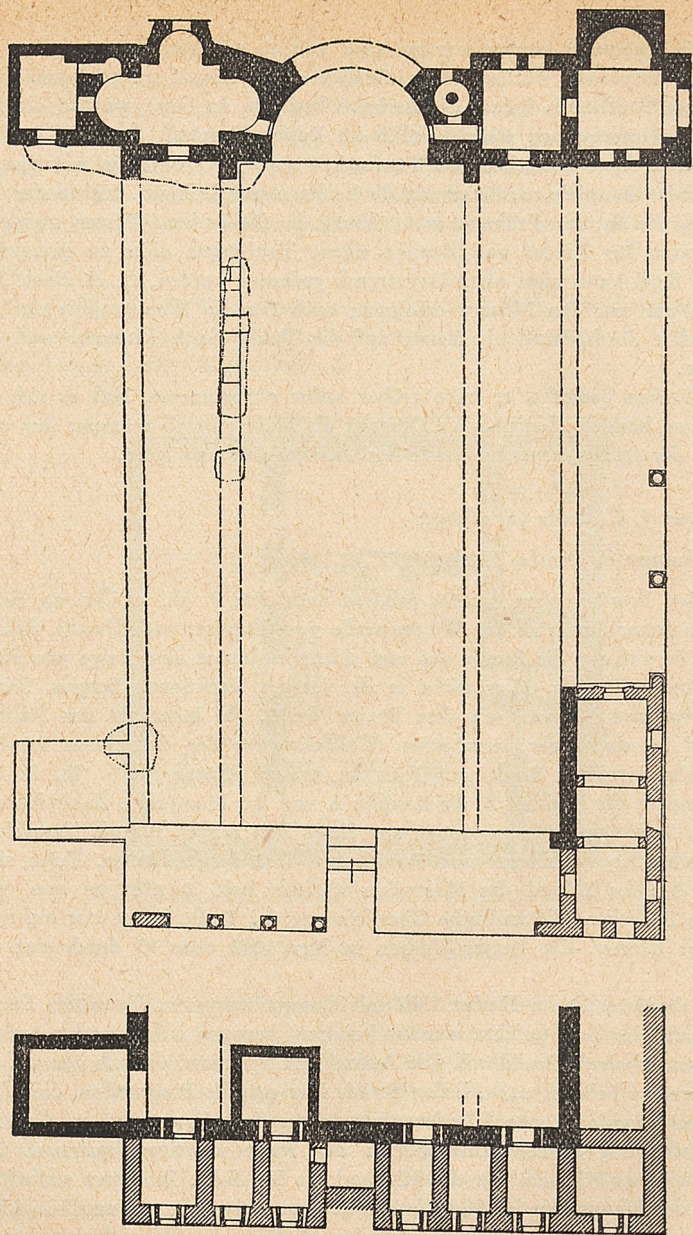
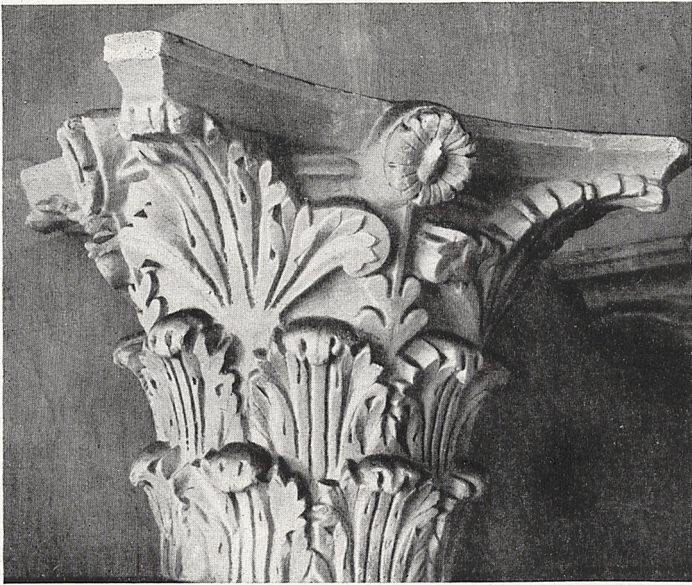


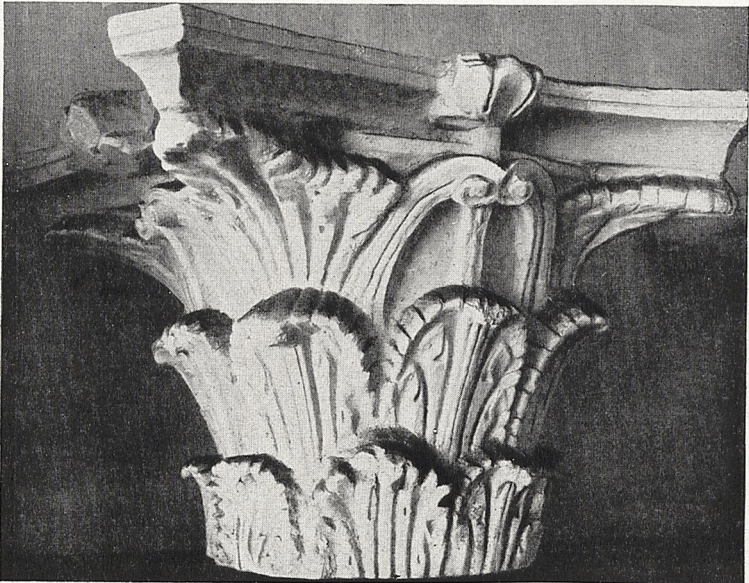
Abb. 3 Resafa, Basilika B



Abb. 4 Lorsch, Torhalle. Kompositkapitell von der Vorderseite



a



b

Abb. 5 Aachen Münster. a) Antikes Marmorkapitell
b) Karolingische Kopie (Gipsabgüsse)



a



b

Abb. 6 a) Aachen, Münstersammlung. Bossenkapitell
b) Köln, früher Wallraf-Richartz-Museum. Korinthisierendes Kapitell



Abb. 7 Fulda, St. Michael. Verstümmeltes Kompositkapitell

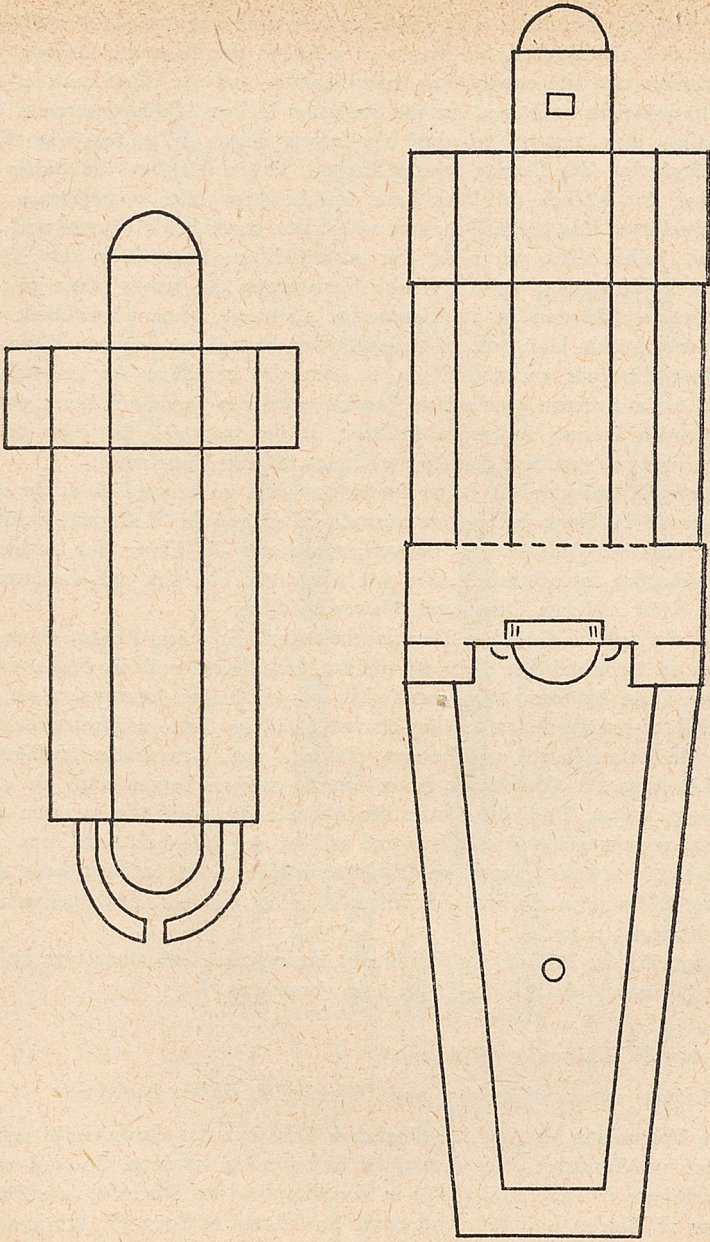


Abb. 8 Köln, Dom. a) Bau VI. b) Bau VII.

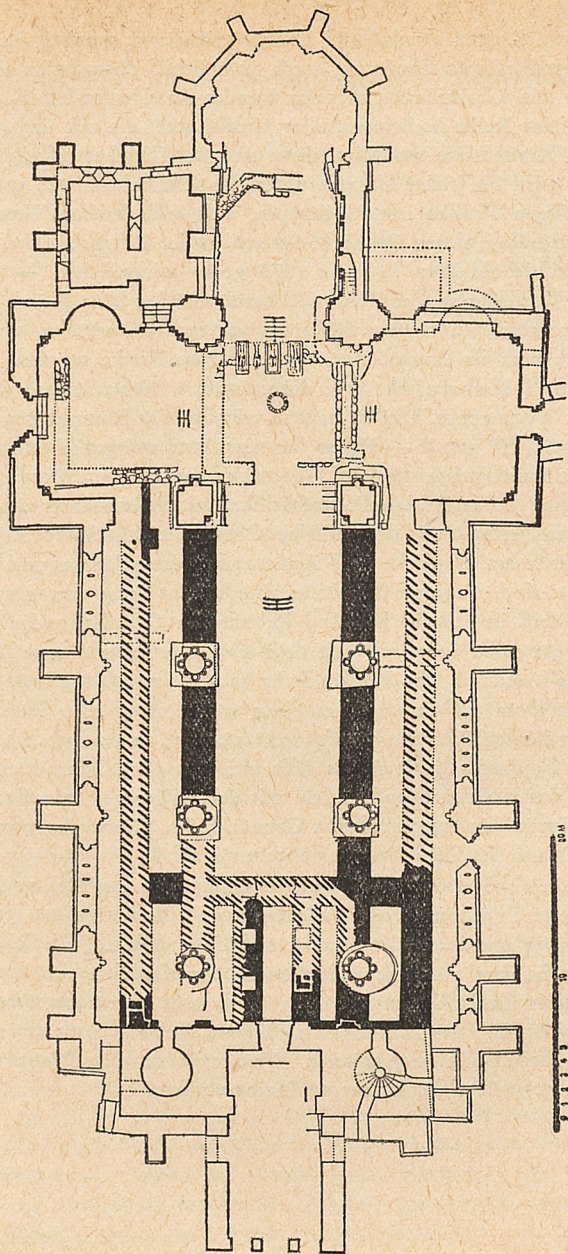


Abb. 9 Minden, Dom