



Abb. 1a Joshua Reynolds, Dr. Charles Burney, 1781. London, Nat. Portrait Gallery



Abb. 1b William Doughty nach Reynolds, Samuel Johnson, 1799, Mezzotinto. The Trustees of the British Museum



Abb. 2 Joshua Reynolds, *Georgiana, Duchess of Devonshire, with her daughter, Lady Georgiana Cavendish, 1786. The Duke of Devonshire and the Chatworth Settlement Trustees*



Abb. 3a James Watson nach Reynolds. *The Duchess of Marlborough and her daughter, Lady Caroline Spencer, 1768*, Mezzotinto. The Trustees of the British Museum



Abb. 3b James Watson nach Reynolds, Mrs. Edward Lascelles and Child, um 1772, Mezzotinto. The Trustees of the British Museum



Abb. 4 Joshua Reynolds, Mrs. Abington als „Miss Prue“, 1771. Yale Center for British Art, Paul Mellon Collection

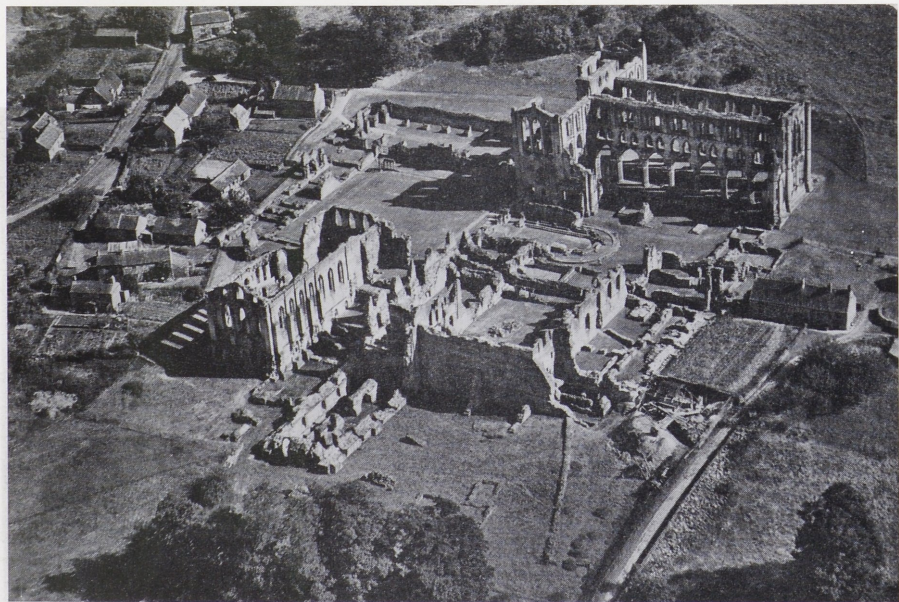


Abb. 5a Rievaulx Abbey, air view from south (postcard)



*Abb. 5b Rievaulx Abbey, nave looking east (P. Fergusson, *Archit. of Solitude*, Princeton 1984, pl. 2)*



Abb. 6 Ripon Cathedral, choir, north side view to west (ibid., pl. 90)

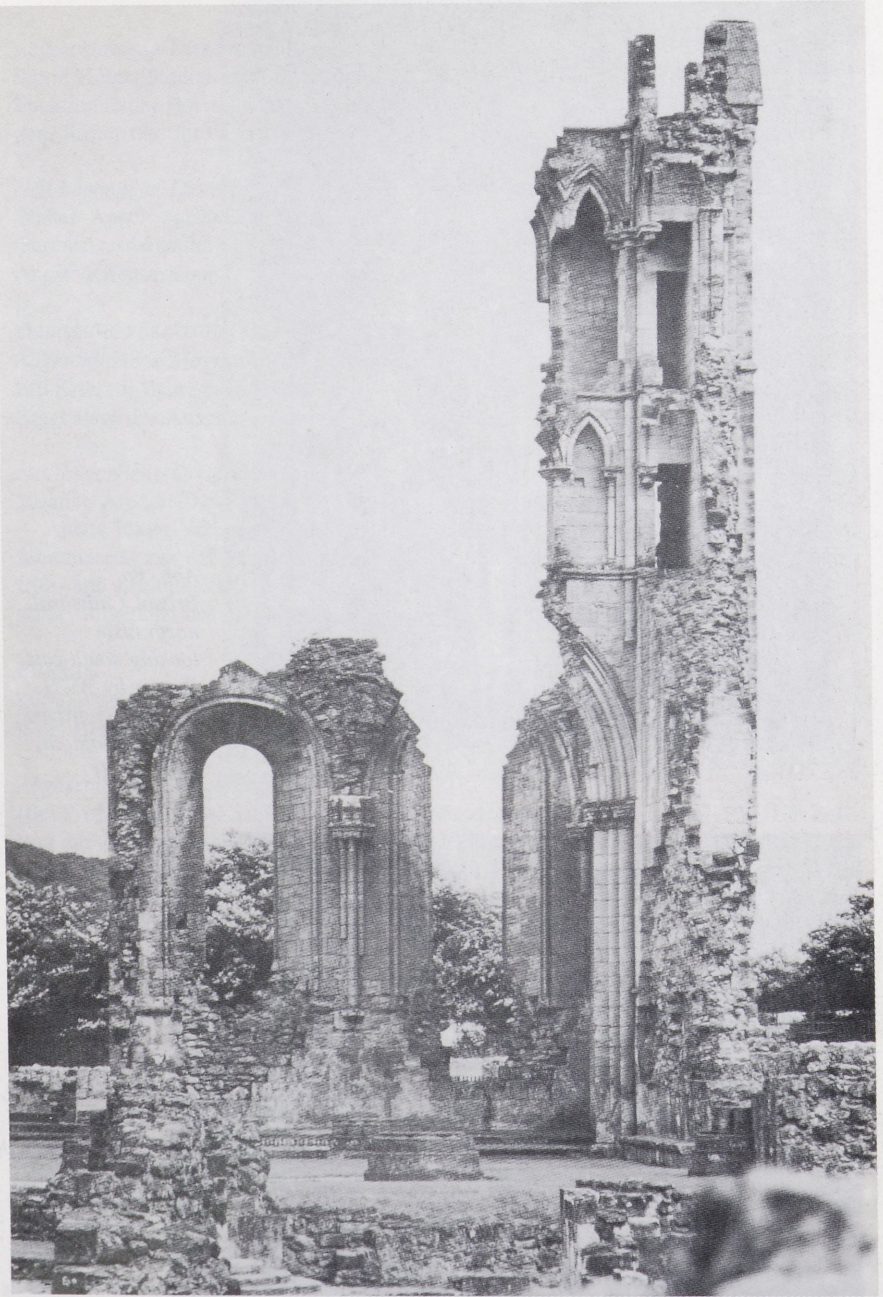


Abb. 7 Byland Abbey, south transept, southeast angle (ibid., pl. 78)



Abb. 8a
Bristol Cathedral,
north aisle
looking south-east.
Drawn by W. H.
Bartlett, engraved
by W. Woolnoth,
publ. 1830



Abb. 8b
London, West-
minster Palace,
St Stephen's
Chapel, after the
fire of 1834,
drawing publ.
1844 (J. Bony,
The English
Decorated Style,
Oxford 1979,
ill. 329)