

Abb. 1 Giovanni Fattori: „La rotonda di Palmieri“, 1866. Florenz, Galleria d'Arte Moderna di Palazzo Pitti

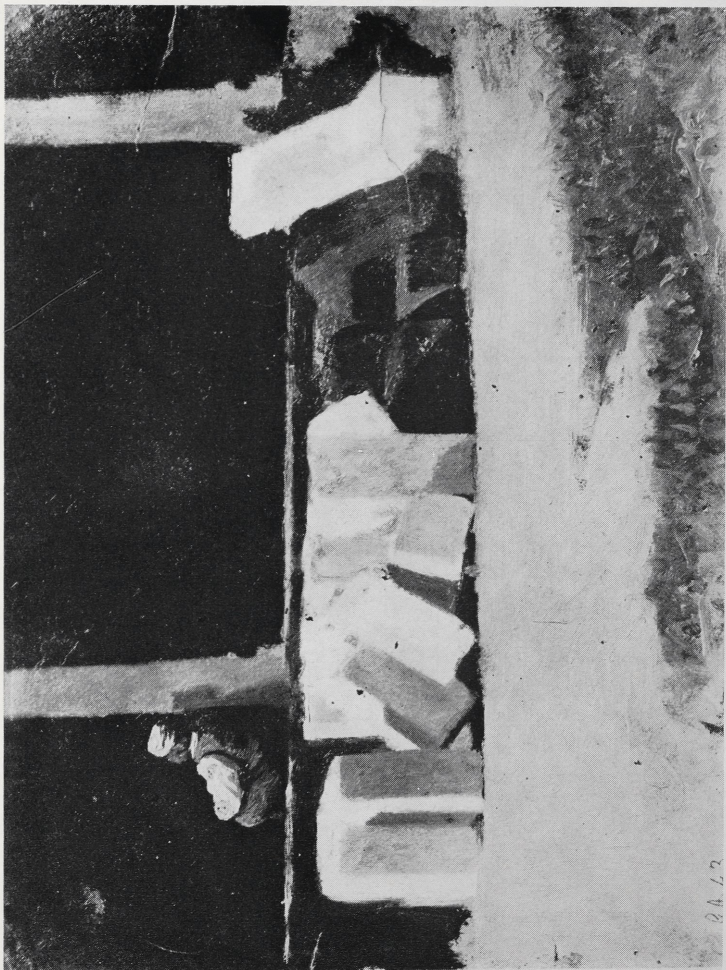


Abb. 2 Giuseppe Abbati: „Chiostro“. Florenz, Galleria d'Arte Moderna di Palazzo Pitti

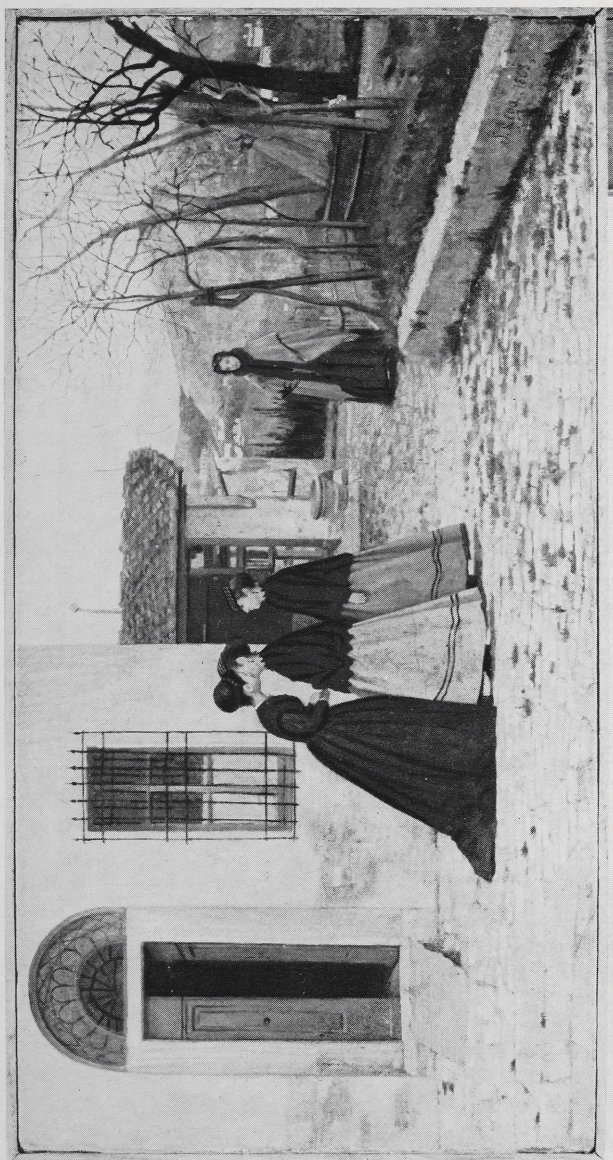


Abb. 3 Silvestro Lega: „La visita“, 1868. Rom, Galleria Nazionale d'Arte Moderna

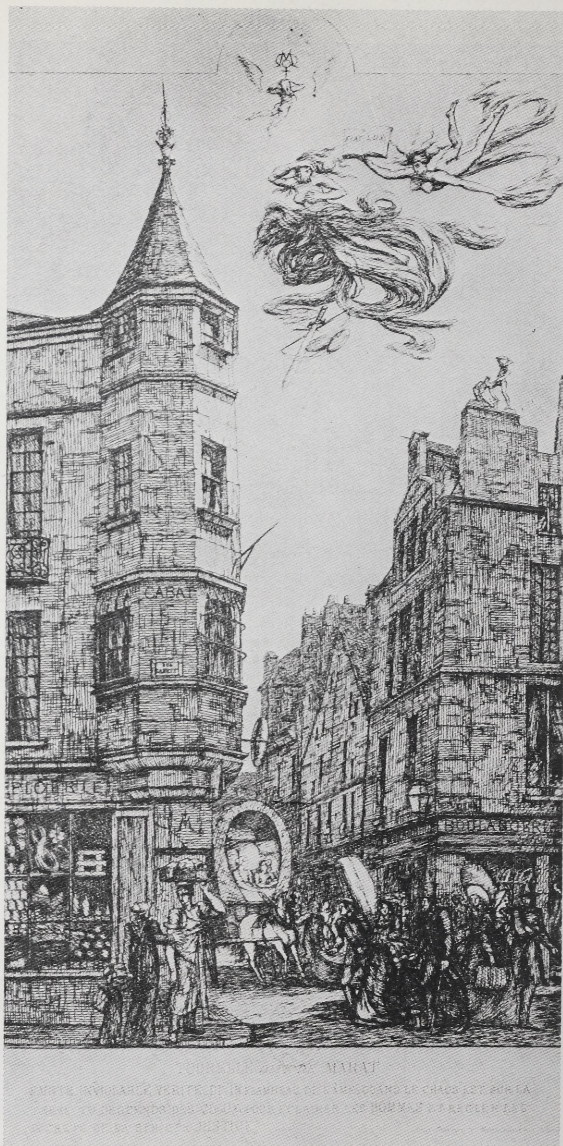


Abb. 4 Charles Meryon: „Tourelle dite de Marat“, Rue de l'École de Médecine. Radierung 1861 (6. Zustand). Paris, Bibliothèque Nationale