

DER ANTIKE SUDAN



MITTEILUNGEN DER SUDANARCHÄOLOGISCHEN GESELLSCHAFT ZU BERLIN E.V.



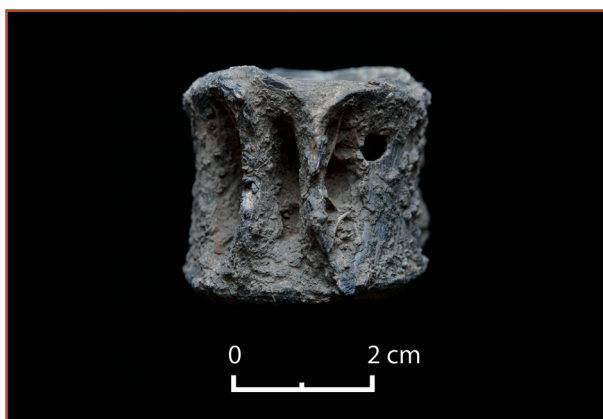
Colour-Fig. 1: Fossil Rhino partial scapula.



Colour-Fig. 5: Fossil sea urchin.



Colour-Fig. 2: Fossil Cameloid radioulna.



Colour-Fig. 6: Fossil fish vertebrae.



Colour-Fig. 3: Fossil Bovid tooth (occlusal view).

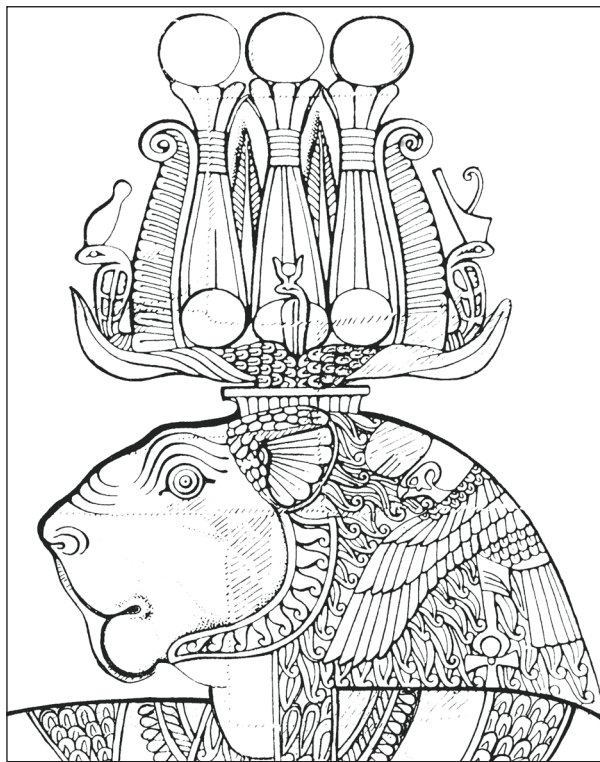


Colour-Fig. 4: Fossil Ammonite.



Colour-Fig. 7: Coffin mask (F8110) found in western chamber of tomb G309, Drawing by Elisabeth Greifenstein/Claire Thorne.

MITTEILUNGEN DER
SUDANARCHÄOLOGISCHEN
GESELLSCHAFT ZU BERLIN E.V.



HEFT 23
2012

