

especially for establishing rapid, broad groups and then its subsequent use as a triage tool for choosing material for more detailed studies? Yes, but perhaps not with beginners (as with most atlases they may be overwhelmed) but certainly in the hands of someone already familiar with the macroscopical examination of sherds and with a little petrographical knowledge. Hence this slim book bridges the gap between Orton and Hughes' outstanding *Pottery in Archaeology* and Quinn's more petrographical *Ceramic Petrography* in terms of practical pottery studies (see review by Ixer 2014).

In summary, the potential use of the portable digital optical microscope for field use is high, and this book should help to ensure it is used correctly.

## References

- \*GEO Leicester grain size scale. Supplied by Geo Supplies Ltd. [www.geosupplies.co.uk](http://www.geosupplies.co.uk)
- Ixer, R.A. 2014. Text Book Pottery Texts. *Antiquity*, 88. 984–5.
- MacKenzie, W. S. and Guilford, C. 1980. *Atlas of rock-forming minerals in thin section*. Longman, Harlow Essex.
- Orton, C. and Hughes, M. 2013. *Pottery in Archaeology*. Cambridge University Press, Cambridge.
- Quinn, P. S. 2013. *Ceramic Petrography: the interpretation of archaeological pottery & related artefacts in thin section*. Archaeopress, Oxford.

## NEWS

The editors and team of FACEM\*, Verena Gassner, Babette Bechtold and Maria Trapichler, are pleased to announce that the 4<sup>th</sup> edition of FACEM is now online (<http://facem.at>).

### ***Provenance Studies on Pottery in the Southern Central Mediterranean from the 6<sup>th</sup> to the 2<sup>nd</sup> c. B.C.***

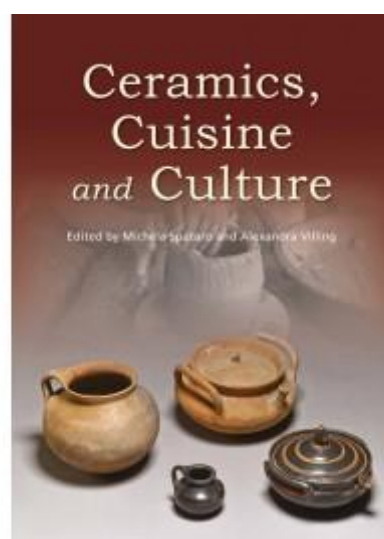
The fourth release of FACEM on 6<sup>th</sup> June 2015, mainly focuses on the edition of Punic amphorae productions of western Sicily, and presents new data on both archaeological and archaeometric research

on local glazed wares, coarse wares, bricks and transport amphorae from Velia.

\*FACEM (Fabrics of the Central Mediterranean) is a database for specialists of Greek, Punic and Roman pottery, first released on 6<sup>th</sup> June 2011. Its aim is to give an overview of production centres in the Central Mediterranean region by presenting images and descriptions of fabrics.

Please use for future correspondence the following email address: [babette\\_bechtold@gmx.at](mailto:babette_bechtold@gmx.at)

## New book:



### **Ceramics, Cuisine and Culture**

Michela Spataro and Alexandra Villing (Editors), ISBN: 9781782979470; Oxbow Books Publication, 2015, 304p, H279 x W215 (mm).

The 23 papers presented here are the product of the interdisciplinary exchange of ideas and approaches to the study of kitchen pottery in the Mediterranean region, from the Bronze Age to the Roman period. Using a range of social, economic and technological models aimed at unlocking the heuristic potential of this vital category of evidence, archaeologists, material scientists, historians and ethnoarchaeologists address the technical aspects of pottery production, cooking as socio-economic practice and changing tastes, culinary identities and cross-cultural encounters. The technical and social aspects of coarse ware have been a growing and contested field in scholarship of the last decade. The chapters in this volume contribute to this debate, moving kitchen pottery beyond the Binfordian 'technomic' category, linking processualism, ceramic-ecology, behavioural schools, and ethnoarchaeology to research on wider

historical developments and cultural transformations. For the first time including an explicit focus on the Greek world in the first millennium BC, they highlight long-neglected 'coarse ware' as key evidence in the study of both prehistoric and historic societies.

---

## CONFERENCE DIARY

### **21<sup>st</sup> Annual Meeting European Association of Archaeologists (EAA) 2-5 September 2015, Glasgow, United Kingdom**

The meeting highlights the current issues of European archaeology and beyond. The EAA conference will take place at the University of Glasgow and will focus on six themes: Celtic connections, Archaeology and Mobility, Reconfiguring identities, Science and Archaeology, Communicating Archaeology, and Legacies and Visions.

For more information:  
<http://eaaglasgow2015.com/>

### **17<sup>th</sup> International Conference on Archaeological Sciences (ICAS 2015) 10-11 September 2015, Singapore**

The 17<sup>th</sup> International Conference on Archaeological Sciences (ICAS 2015) is a multi-disciplinary forum for the presentation of new advances and research results in the fields of Archaeological Sciences. The conference will bring together leading academic scientists, researchers and scholars in the domain of interest from around the world. Topics of interest for submission include ceramics, glazes, glass, vitreous materials, archaeo-chronometry, stone, plaster and pigments, metals and metallurgical ceramics.

For more information:  
<https://www.waset.org/conference/2015/09/singapore/ICAS/call-for-papers>

### **13<sup>th</sup> European Meeting on Ancient Ceramics (EMAC 2015) 24-26 September 2015, Athens, Greece**

The 13<sup>th</sup> European Meeting on Ancient Ceramics (EMAC) will be co-organised by the Laboratory of Archaeological Materials, N.C.S.R. "Demokritos", the Fitch Laboratory of the British School at Athens. The conference will be held at the auditorium of the New Acropolis Museum in Athens.

EMAC is a biennial conference which focuses on interdisciplinary studies of ancient ceramics, including methodological developments and new approaches.

The main topics are: methodological developments, dating of ceramics, production, dissemination and consumption, slips and glazes, technical ceramics, ceramics as building materials, vessel function and vessel use, raw material studies, pottery kilns, and alteration and conservation.

For more information:  
<http://www.emac2015.gr/>

### **Ceramic Petrology Group (CPG) Annual General Meeting 6-7 November 2015, Durham, United Kingdom**

The next Ceramic Petrology Group (CPG) Annual Meeting will be held at Durham University on the 6<sup>th</sup> and 7<sup>th</sup> of November 2015.

The 2015 CPG annual meeting will consist of a program of short, informal presentations and discussion. Papers are welcome on any aspects of the petrographic, geochemical and SEM analysis of archaeological ceramics, plasters and related materials.

Please send a 200-word abstract by the 1<sup>st</sup> of October to: [kamal.badreshany@durham.ac.uk](mailto:kamal.badreshany@durham.ac.uk)

### **3<sup>rd</sup> Methodology and Archaeometry (MetArch) conference 2015 2-4 December 2015, Zagreb, Croatia**

The scientific conference is being organised by the Department of Archaeology, Faculty of Humanities and Social Sciences since 2013. The goal of the conference is to entice interdisciplinarity, critical thinking, new insights and approaches as well as new theoretical frameworks in contemporary archaeological science. Coverage of a wide spectrum of themes and scientific disciplines has resulted in papers and discussions that promote scientific issues in the fields of methodology, documentation and interpretation of archaeological data. The interdisciplinary character of the conference brings together archaeologists and researchers from other scientific disciplines with whom archaeologists collaborate closely; and who – through their work, projects and ideas – promote new insights about interpretation of the human life in the past.

For more information:

<http://haemus.org.mk/metarch-conference-2015/>

**<sup>14</sup>C & Archaeology 8<sup>th</sup> International Symposium  
27 June - 1 July 2016, Edinburgh, United Kingdom**

The symposium will be organised by the staff of the SUERC Radiocarbon Dating Laboratory, with help from a number of Scottish based archaeologists and scientists. The SUERC laboratory has a long association with archaeology, particularly Scottish archaeology, having worked closely with Historic Scotland for over 30 years. Therefore, the aim for the symposium is to showcase a good balance of current archaeological research that employs radiocarbon and developments in the radiocarbon technique.

For more information:

<http://www.c14archaeology2016.com/>

---

## THE OLD POTTER'S ALMANACK

*The Old Potter's Almanack* is the joint letter of the Ceramic Petrology Group and the Prehistoric Ceramics Research Group. It is a venue for presenting current projects, research, reviews, information and topics of interest on all aspects of pottery, ceramics and refractory materials to the audience of scholars, experts, students, interested groups and individuals. The OPA is now published on-line with Heidelberg University and reaches a world-wide audience (see below for link).

We welcome contributions focussing on any aspect of ceramics technology from any period, culture and geographic locality. Topics can cover materials from collections, museums, excavations and experimental work.

The deadline for copy of articles for the next issue of the OPA is 31<sup>st</sup> October 2015 (guidelines for contributors are available from the Editor). Copy and other information, news and events should be sent to the Editor, Michela Spataro (for details see below).

### Hon. Editor of the OPA

Michela Spataro

Science Group  
Dept. of Conservation & Scientific Research  
The British Museum, London WC1B 3DG  
Email: [michelaspataro@yahoo.co.uk](mailto:michelaspataro@yahoo.co.uk)

### Ceramic Petrology Group (CPG) Hon. President

Ian Whitbread

School of Archaeology and Ancient History  
University of Leicester  
University Road,  
Leicester, LE1 7RH  
Email: [ikw3@leicester.ac.uk](mailto:ikw3@leicester.ac.uk)

### Ceramic Petrology Group (CPG) Hon. Secretary

Patrick Quinn

UCL Institute of Archaeology  
31-34 Gordon Square  
London, WC1H 0PY  
Email: [patrick.quinn@ucl.ac.uk](mailto:patrick.quinn@ucl.ac.uk)

### Production Editor of the OPA

Nigel Meeks

Science Group  
Dept. of Conservation & Scientific Research  
The British Museum, London WC1B 3DG  
Email: [nmeeks@thebritishmuseum.ac.uk](mailto:nmeeks@thebritishmuseum.ac.uk)

### Prehistoric Ceramics Research Group (PCRG) Secretary

Sarah Percival

NPS Archaeology, Scandic House  
85 Mountergate, Norwich NR1 1PY  
Email: [sarah.percival@nps.co.uk](mailto:sarah.percival@nps.co.uk)

### Prehistoric Ceramics Research Group Treasurer

Grace Jones

Bournemouth University, Fern Barrow, Poole,  
Dorset, BH12 5BB, United Kingdom  
Email: [gjones@bournemouth.ac.uk](mailto:gjones@bournemouth.ac.uk)

---

## WEBSITES

### The Old Potter's Almanack

<http://archiv.ub.uni-heidelberg.de/ojs/index.php/opa/index>

### Ceramic Petrology Group

<https://www.facebook.com/groups/TheCPG/>

### Prehistoric Ceramics Research Group

<http://www.pcr.org.uk/>