
THE OLD POTTER'S ALMANACK

Volume Twenty-four, Number One: June 2022. ISSN 0965-7479

EDITORIAL

Dear Reader,

The *Old Potter's Almanack* was paused for the last two years due to a series of events, included the dreadful Covid pandemic, that, among the tragic events, also slowed down a variety of research activities.

This issue presents three papers. In the first, Jasna Vuković discusses the role of Neolithic black-topped ceramics with a polychrome effect at the Serbian site of Pavlovac-Čukar, which as well as showing traces of use, were often repaired and reused.

In the second paper, Cristian Eduard Ștefan describes an intriguing pot, an *askos*, found at the Boian site of Radovanu-La Muscalu in Romania. Ștefan suggests that this vessel type had probably a functional role, and provides us with an overview on similar finds from the Gumelnița-Karanovo VI area.

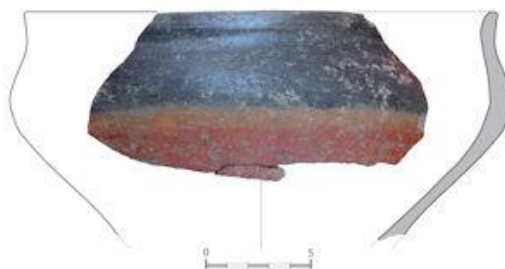
In the third paper, Nigel Meeks and Michael Tite offer a detailed description on the use of high-resolution SEM-EDX elemental X-ray maps and colour optical microscopy images to study ceramic phases, focusing on their application to maiolica body and glaze. This is a much-needed paper for all colleagues who use the SEM-EDX analytical tool.

I am deeply saddened to let you know that Dr Roberta Tomber, whom many of you knew as an amazing researcher, original thinker, enthusiastic and excellent archaeologist and petrographer, sadly passed away on the 1st of May. Since the initial phases of the CPG, Roberta has been key to it and was one of the most serious, supportive and appreciated scholars, and one of my dearest friends. I recently worked with Roberta on co-editing a special issue of the *Journal of Archaeological Science: Reports* (<https://www.sciencedirect.com/journal/journal-of-archaeological-science-reports/vol/16/suppl/C>). She was incredibly clever, careful, with an eagle eye for detail, and extremely fun to work with. This issue includes an obituary for Roberta, to offer a glimpse into her incredibly productive and rich life.

Michela Spataro

IN THIS ISSUE

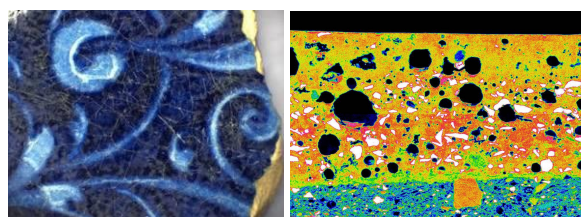
Repair and curation of Late Neolithic three-coloured pots: Insights from the site of Pavlovac-Čukar, Southern Serbia
Jasna Vuković Page 2



An Askos-type vessel from Radovanu-La Muscalu, Romania
Cristian Eduard Ștefan Page 6



The application of high-resolution SEM-EDX compositional mapping to the technological study of ancient ceramics: a case study on Italian maiolica
Nigel Meeks and Michael Tite Page 10



OBITUARY

Page 30

CONFERENCE DIARY

Page 30